

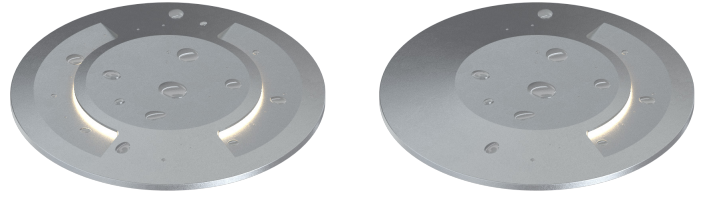
# U358

**UNDERWATER: CHLORINATED WATER, FRESH WATER & SEA WATER**  
 In-grade | Submersed under water up to 10' (3m) depth.

- Underwater/Swimming Pool Certified

CSA - CLASS 3425 09 -Submersible

CSA - CLASS 3425 89 -Submersible - Certified to US Standards



## Ordering Information

Clear Form

Date : \_\_\_\_\_

Quantity : \_\_\_\_\_

Project : \_\_\_\_\_

Note : \_\_\_\_\_

Type : \_\_\_\_\_

## Specifications

**Luminaire** | Example Code: U358-7-W30H-D-MK1-B-12-S6

Product	Wattage	CCT & CRI <sup>1</sup>	Aperture	Mounting Kit <sup>2</sup> (optional)	Flange & Back Box	Lead Length <sup>3</sup>	Trim Finish
<b>U358</b>							<b>S6</b>
	3 1W x 3 7 2.5W x 3	<b>W22S</b> 2200K 80+ <b>W27H</b> 2700K 90+ <b>W30H</b> 3000K 90+ <b>W35H</b> 3500K 90+ <b>W41H</b> 4100K 90+	<b>S</b> single <b>D</b> double	<b>MK1</b> vertical surface	<b>B</b> back box <b>F</b> flange only	<b>15</b> 15' (4752mm) <b>X</b> custom	<b>Stainless Steel Finishes:</b> <b>S6</b> stainless steel 316

## System Components (Ordered Separately)

Pool-certified power supply : \_\_\_\_\_

\* Consult MP Lighting Website or Factory.

## Important Notes

### Specification

1. Refer to pg.2 - for Colour Consistency details.
2. Mounting kit is ordered separately. Please consult factory.
3. Custom length available by 1' increments.

### Warranty Notes & Disclaimer

Malfunction and damage to product due to incompatible dimming system or misuse will not be covered under warranty. Consult MP Lighting for recommended drivers. If the fixture has an option to be installed with a dimming control system, consult a dimming system manufacturer with minimum load before installing. MP Lighting reserves the right, at its sole discretion, at any time and without notice, to make design changes to any of our products. Consult MP Lighting website for most updated documentation.

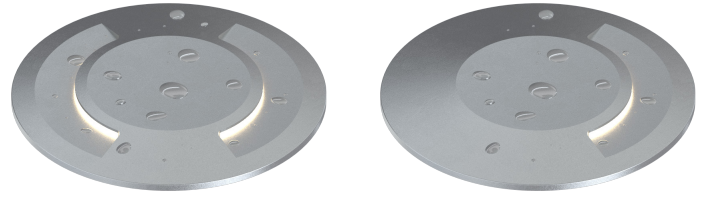
# U358

**UNDERWATER: CHLORINATED WATER, FRESH WATER & SEA WATER**  
 In-grade | Submersed under water up to 10' (3m) depth.

- Underwater/Swimming Pool Certified

CSA - CLASS 3425 09 -Submersible

CSA - CLASS 3425 89 -Submersible - Certified to US Standards



## Performance

Wattage	Supply Volatage	Power Consumption Budget per fixture (including driver)	LED output (Source)	Fixture Output (Delivered)
3W	12V	3.6W	330 lm	1.3-2.5 lm
7.5W	12V	8.0W	825 lm	2.2-4.0 lm

## Application

Environment	Dry / Damp / Wet/ Underwater Location approved. IP 68.
Mounting	<b>Recessed:</b> Designed to be cast into earth, gravel, or concrete for submersed applications. <b>MK1 mounting kit (optional):</b> Recommended for easy installation on vertical surfaces (e.g. stair risers, walls), and downward-facing surfaces (e.g. ceilings, soffits). See "Mounting Options & Dimensions," or visit <a href="#">MK1</a>

## Electrical

Power Supplies	Compatible with remote pool-certified power supplies
Control	On/off control

## Luminaire Construction

LED Light Source	<b>W22S</b> = CCT: 2200K, CRI (Ra): 80+, Colour Consistency: 3SDCM <b>W27H</b> = CCT: 2700K, CRI (Ra): 90+, Colour Consistency: 2SDCM <b>W30H</b> = CCT: 3000K, CRI (Ra): 90+, Colour Consistency: 2SDCM <b>W35H</b> = CCT: 3500K, CRI (Ra): 90+, Colour Consistency: 3SDCM (Contact factory for 2SDCM option) <b>W41H</b> = CCT: 4100K, CRI (Ra): 90+, Colour Consistency: 3SDCM
Weight	N/A
Material	<b>Fixture:</b> Stainless steel (316) with tempered glass
Supplied with	<b>Standard installation housing:</b> Comes with a 304 stainless steel square back box, an brass/stainless steel 316 flange, an integral leveling device, a plastic cap, and silicone grease. <b>Wire lead:</b> 15' (4752mm)
Warranty & LED Life	5 years limited warranty Estimated useful life of LED is 50,000 hours.

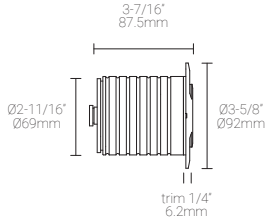
## Ordered Separately

System Components	<b>Power supplies:</b> remote power supply Please consult factory or visit <a href="#">Recommended Drivers</a> for available driver options. <b>Mounting kits:</b> MK1
-------------------	--

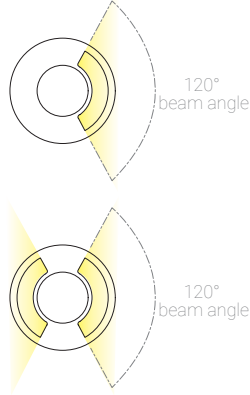
## Mounting Options & Dimensions

### LED Insert Dimensions (shown with double aperture)

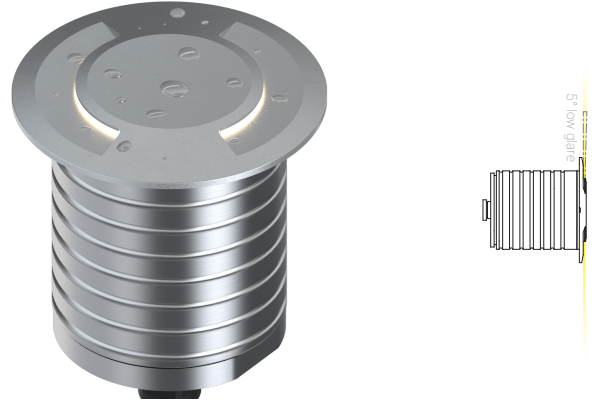
Fixture



Top View

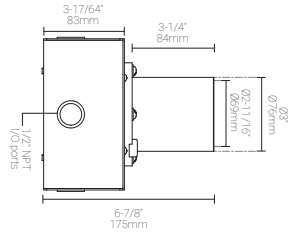


3D View

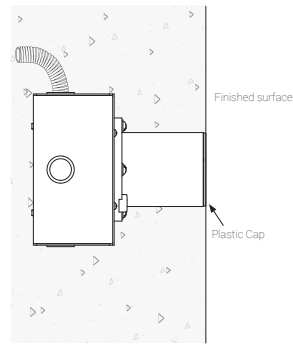


### In-ground Installation (shown with MP Lighting Back Box | Order Code: EBX-SQR1-DSBR)

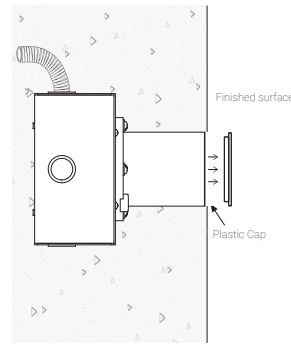
Box with Standard Flange



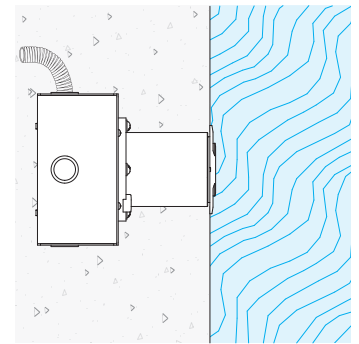
Box with Standard Flange:  
During Concrete Installation



Box with Standard Flange:  
During Concrete Installation



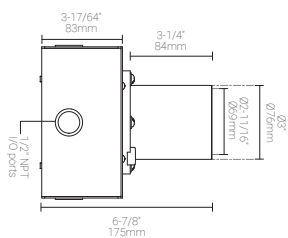
Box with Standard Flange:  
Complete Concrete Installation



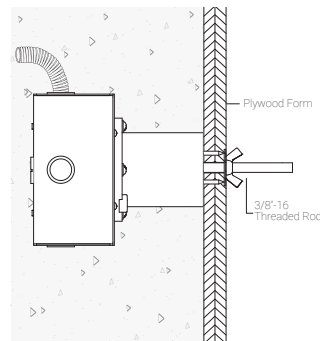
## Mounting Kit

### MK1: Ceiling, Wall, and Stair Riser Installation (shown with MP Lighting Back Box | Order Code: EBX-SQR1-DSBR)

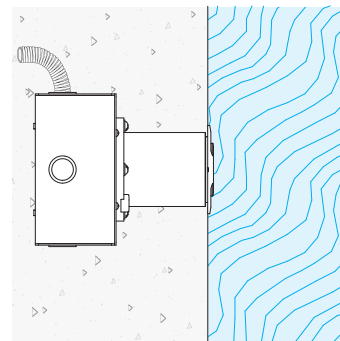
Box with Standard Flange



Box with Standard Flange & MK1:  
During Installation



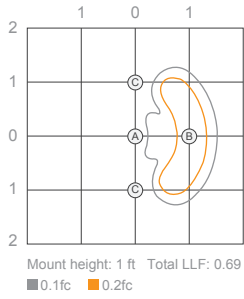
Box with Standard Flange:  
Complete Installation



6" (152mm) threaded rod is supplied. Thread size: 3/8"-16

3W, 3000K, 90+ CRI

Isofootcandle Plot

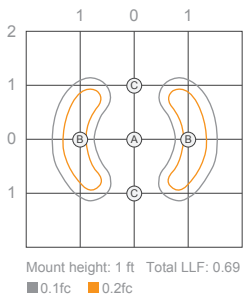


Illuminance at a Distance

Location	Center Beam fc
A	0.23fc
B	0.16fc
C	0.44fc

Delivered Lumen: 1.3 lm

Isofootcandle Plot



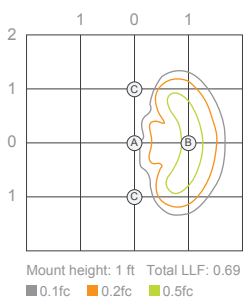
Illuminance at a Distance

Location	Center Beam fc
A	0.35fc
B	0.51fc
C	0.21fc

Delivered Lumen: 2.5 lm

7W, 3000K, 90+ CRI

Isofootcandle Plot

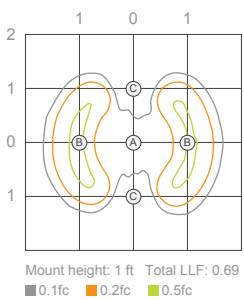


Illuminance at a Distance

Location	Center Beam fc
A	0.39fc
B	0.3fc
C	0.77fc

Delivered Lumen: 2.2 lm

Isofootcandle Plot

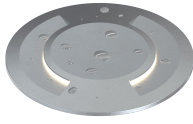


Illuminance at a Distance

Location	Center Beam fc
A	0.63fc
B	0.91fc
C	0.51fc

Delivered Lumen: 4.0 lm

Appendix



**S6** stainless steel 316  
**D** double aperture



**S6** stainless steel 316  
**S** single aperture