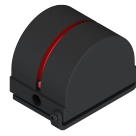


# R159

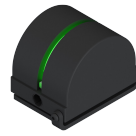
EXTERIOR | INTERIOR

Window Sill with RGB-White or RGB-Amber

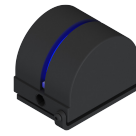
• Wet, Damp, and Dry Location



R (red)  
no tilt angle



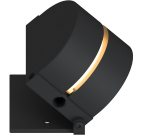
G (green)  
no tilt angle



B (blue)  
no tilt angle



W (white)  
45° tilt



A (amber)  
45° tilt

## Ordering Information

Clear Form

Date : \_\_\_\_\_

Quantity : \_\_\_\_\_

Project : \_\_\_\_\_

Note : \_\_\_\_\_

Type : \_\_\_\_\_

## Specifications

Luminaire | Example Code: R159-3-RGB-W-E-BA

| Product | Version | CCT & CRI                          | Beam Angle             | Finish            |
|---------|---------|------------------------------------|------------------------|-------------------|
| R159    | 3       |                                    | E                      | BA                |
|         | 3 3W    | RGB-W RGB White<br>RGB-A RGB Amber | E elliptical 5° x 175° | BA black anodized |

### System Components (Ordered Separately)

Remote Driver : \_\_\_\_\_

\* Consult MP Lighting Website or Factory.

### Important Notes

Specification

#### Warranty Notes & Disclaimer

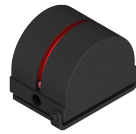
Malfunction and damage to product due to incompatible dimming system or misuse will not be covered under warranty. Consult MP Lighting for recommended drivers. If the fixture has an option to be installed with a dimming control system, consult a dimming system manufacturer with minimum load before installing. MP Lighting reserves the right, at its sole discretion, at any time and without notice, to make design changes to any of our products. Consult MP Lighting website for most updated documentation.

# R159

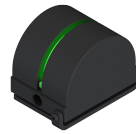
EXTERIOR | INTERIOR

Window Sill with RGB-White or RGB-Amber

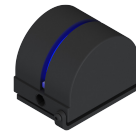
• Wet, Damp, and Dry location



R (red)  
no tilt angle



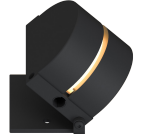
G (green)  
no tilt angle



B (blue)  
no tilt angle



W (white)  
45° tilt



A (amber)  
45° tilt

## Performance

| Wattage | Forward Current | Power Consumption Budget per fixture (including driver) | LED output (Source) | Fixture Output (Delivered) |
|---------|-----------------|---|---------------------|----------------------------|
| 3W      | 250mA           | 3.5W  | 330 lm              | 41.2 lm                    |

## Application

|             |   |
|-------------|---|
| Environment | Wet, Damp, Dry Location approved. IP 66.  |
| Mounting    | Mounted to vertical or horizontal surface, fastened by two screws. Includes 3' (914mm) wire lead. |

## Electrical

|                |   |
|----------------|---|
| Power Supplies | Remote LED drivers (120-277V AC input, <b>constant current output</b> ): Fixtures to be wired in series. Recommended: Remote DMX driver |
| Control        | <b>On/off control</b><br><b>Other options (consult factory):</b> TRIAC/MLV, DMX, DALI, Casambi, Power over Ethernet                     |

## Luminaire Construction

|                     |  |
|---------------------|--|
| LED Light Source    | 3W RED, GREEN, BLUE, WHITE (3000K) colour changing.  |
| Weight              | N/A  |
| Material            | <b>Fixture:</b> solid anodized aluminum  |
| Supplied with       | <b>Standard installation housing:</b> Comes with two screws.<br><b>Cable:</b> 3' (914mm) factory-installed wire lead |
| Warranty & LED Life | 5 years limited warranty<br>Estimated useful life of LED is 50,000 hours.  |

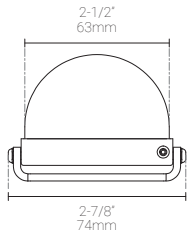
## Ordered Separately

|                   |                                      |
|-------------------|--------------------------------------|
| System Components | <b>Power supplies:</b> remote driver |
|-------------------|--------------------------------------|

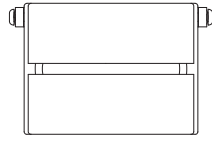
## Mounting Options & Dimensions

### Fixture Dimensions

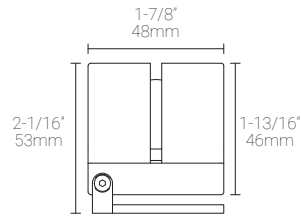
Fixture



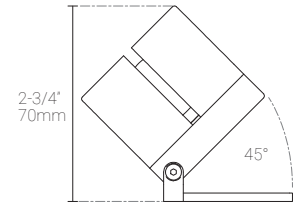
Top View



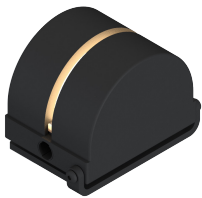
Side View



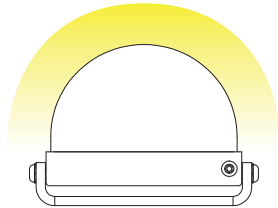
Side View 2



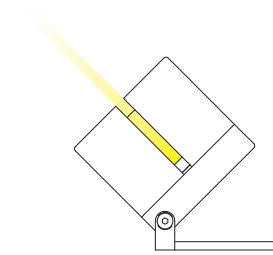
3D View



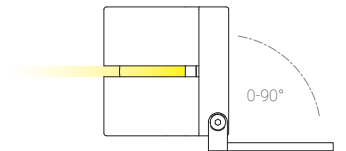
Beam 1



Beam 2

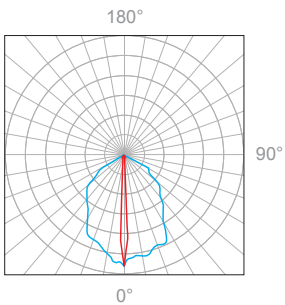


Beam 3



## 3W, 3000K, 90+ CRI

### Polar Candela Distribution



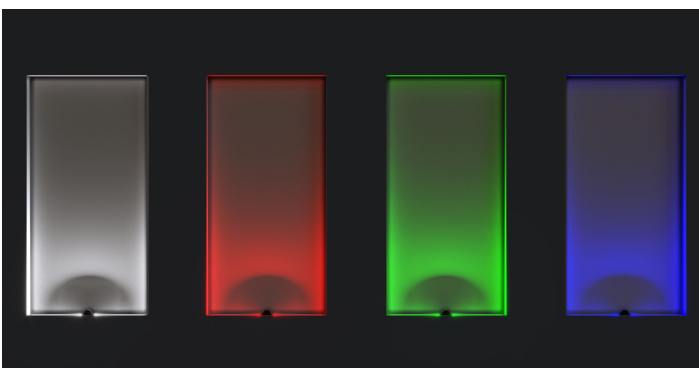
### Illuminance at a Distance

| Distance |       | Center Beam fc | Beam Width |       |       |       |
|----------|-------|----------------|------------|-------|-------|-------|
| 1.5ft    | 0.46m | 75fc           | 5.3ft      | 1.62m | 0.1ft | 0.03m |
| 3.0ft    | 0.91m | 18.8fc         | 10.6ft     | 3.23m | 0.2ft | 0.06m |
| 4.5ft    | 1.37m | 8.34fc         | 16ft       | 4.88m | 0.3ft | 0.09m |
| 6.0ft    | 1.83m | 4.69fc         | 21.3ft     | 6.49m | 0.4ft | 0.12m |
| 7.5ft    | 2.29m | 3fc            | 26.6ft     | 8.11m | 0.5ft | 0.15m |
| 9.0ft    | 2.74m | 2.08fc         | 31.9ft     | 9.72m | 0.6ft | 0.18m |

Delivered Lumen: 41.2 lm  
■ Vertical Beam Spread: 121.2°  
■ Horizontal Beam Spread: 3.6°

## Appendix

RGB-W



RGB-A

