

Seem® 4

LED PERIMETER



Flush Lens

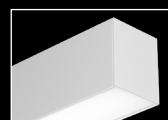
Flush Grazer



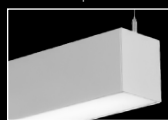
recessed companion



wall to ceiling companion

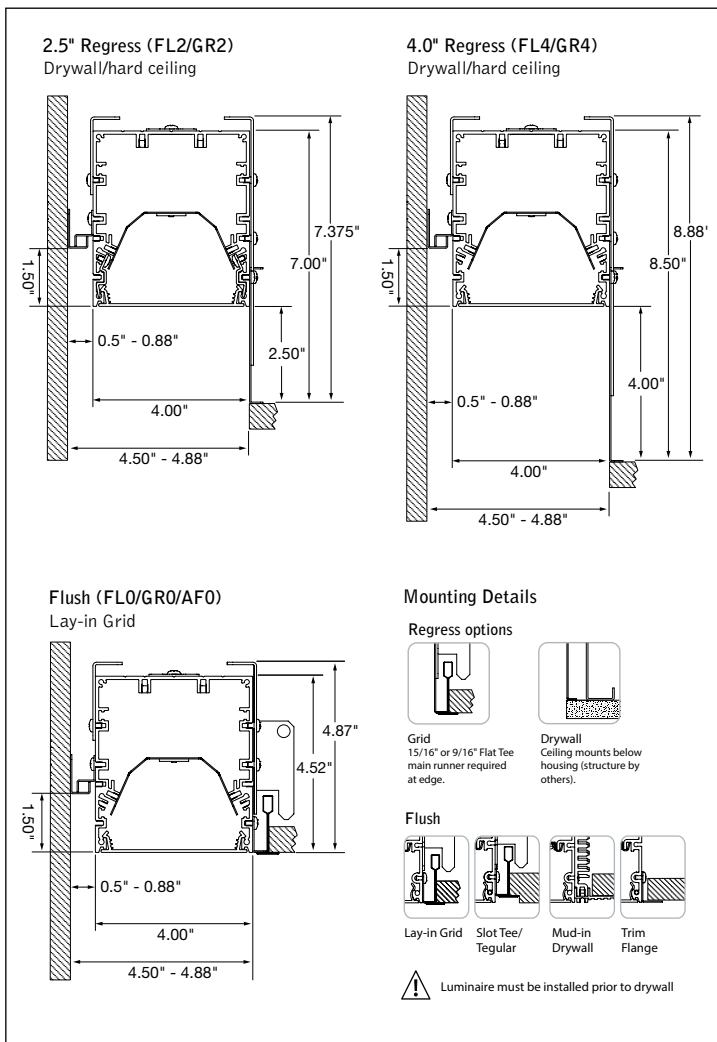


wall mount companion



suspended companion

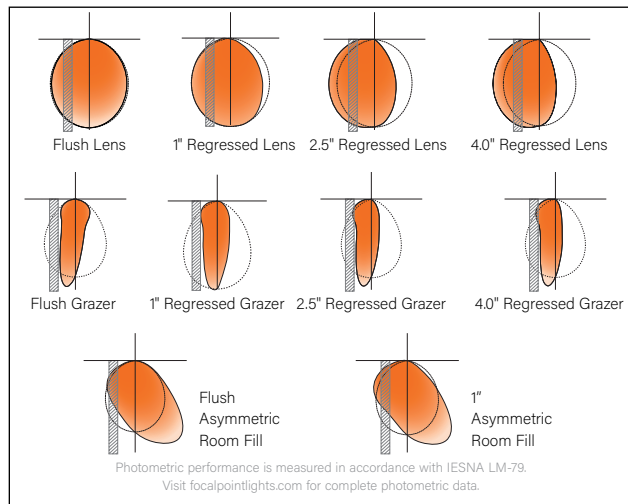
DIMENSIONAL DATA



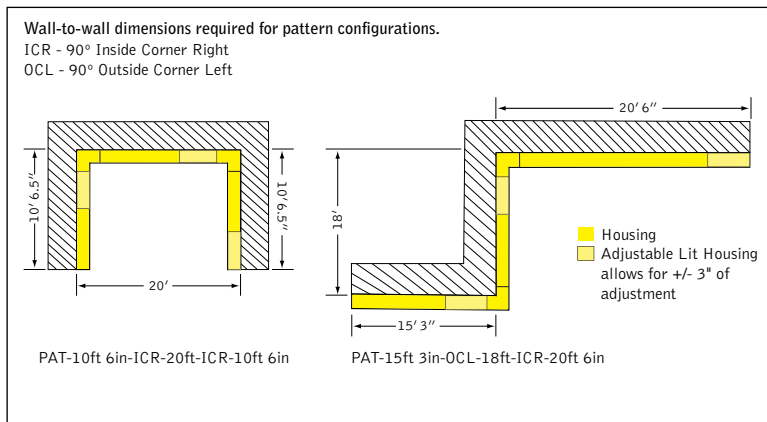
FEATURES

- Seem 4 perimeter provides a glowing transition between ceiling and wall with Flush, 1" regress, 2.5" regress or 4.0" regress lenses.
- Grazer optic provides even vertical illumination and adds drama to a space by highlighting textured walls and architectural details.
- Asymmetric Room Fill optic provides best efficacy and uniformity to light rooms and corridors from the perimeter.
- Adjustable housing option provides flexibility with +/- 3 inch adjustability for wall-to-wall illumination.
- Tunable White: Supports human activity, well-being, and preferences with a light quality that evolves throughout the day.
- Connected Solutions: Integrates with wired and wireless building lighting control systems.
- PoE compatible: Integrates with Power over Ethernet lighting systems via standard, low-voltage wires.

DISTRIBUTIONS



PATTERN CONFIGURATIONS



4' PERFORMANCE CHARTS

Lumen Output	Nominal Lumens	Tested System Watts	LPW			
			FL0	FL1	FL2	FL4
275LF	1100	12	99	78	92	89
375LF	1500	15	103	82	96	93
625LF	2500	25	103	81	96	93
875LF	3500	35	102	80	95	91
1000LF	4000	37	102	80	95	91

Based on 3500K, 80 CRI, 4' lengths. Lumen multipliers: 90+ CRI = 0.87. Lumen output may vary +/- 5%. Actual wattage may vary +/- 5%.

Lumen Output	Nominal Lumens	Tested System Watts	LPW					
			GR0	GR1	GR2	GR4	AF0	AF1
275LF	1100	12	106	84	100	97	111	83
375LF	1500	15	112	88	105	102	116	87
625LF	2500	25	111	87	105	102	116	87
875LF	3500	35	110	86	104	100	114	86
1000LF	4000	37	110	86	104	100	114	86

Based on 3500K, 80 CRI, 4' lengths. Lumen multipliers: 90+ CRI = 0.87. Lumen output may vary +/- 5%. Actual wattage may vary +/- 5%.

STANDARD WHITE

- Luminaire Series**
- Seem 4 LED Perimeter **FSM4PR**
- Housing Type**
- Adjustable Lit Housing **ALH**
- (Allows for +/- 3" adjustment to overall run length, 3' minimum luminaire length.)
- Fixed Housing **FXH**
- (not recommended for wall to wall installations)
- Shielding**
- Flush Lens* **FL0**
- 1.0" Regress **FL1**
- 2.5" Regress **FL2**
- 4.0" Regress **FL4**
- Flush Grazer* **GR0**
- 1.0" Regress Grazer **GR1**
- 2.5" Regress Grazer **GR2**
- 4.0" Regress Grazer **GR4**
- Flush Asymmetric Room Fill* **AF0**
- 1.0" Regress Asymmetric Room Fill **AF1**
- (Not available with Unlit Sliding Sleeves - SSB)
- Lumen Output**
- 275 Lumens per foot **275LF**
- (Not available with Lutron Drivers.)
- 375 Lumens per foot **375LF**
- (Not available with LH1.)
- 625 Lumens per foot **625LF**
- (3' minimum with LH1.)
- 875 Lumens per foot **875LF**
- 1000 Lumens per foot **1000LF**
- Color Temperature**
- 2700K, 80+ CRI or 90+ CRI **27K or 927K**
- 3000K, 80+ CRI or 90+ CRI **30K or 930K**
- 3500K, 80+ CRI or 90+ CRI **35K or 935K**
- 4000K, 80+ CRI or 90+ CRI **40K or 940K**
- Circuits & Zones**
- 1 Circuit, non-emergency **1C**
- Consult Ordering Guide on page 5 for multiple circuiting and zoning options
- Voltage**
- 120/277 UNV Volt **UNV**
- Low Voltage **LV**
- Control System & Dimming Level**
- 0-10V - 10% Dimming **LD1**
- 0-10V - 1% Dimming **L11**
- Low Voltage, PoE compatible **LVN**
- (No driver. Not available with EM or EC. LV Voltage only.)
- Lutron Hi-Lume EcoSystem (LDE1) - 1% Dimming **LH1**
- DALI 1% Dimming **D11**
- Wattstopper DLM - 1% Dimming* **DLM1**
- (Not available with CP)
- Wattstopper Fixture Sensor* **LMFS1**
- Low Density - 1% Dimming
- (Remote mounted sensor. See sensor layout guide.)
- Wattstopper Fixture Sensor* **LMFSD**
- High Density - 1% Dimming
- (Remote mounted sensor. See sensor layout guide.)
- Acuity nLight - 1% Dimming* **NLT1**
- (Not available with CP)
- Enlighted Smart Sensor - 1% Dimming* **ENL1**
- (Remote mounted sensor. See sensor layout guide.)
- Encelium CLM Connected Lighting* **CLM1**
- Module - 1% Dimming
- Current NX Enabled - 1% Dimming* **NXE1**
- (Not available with CP)
- WaveLinX Pro - 1% Dimming* **WLXP**
- (Remote mounted sensor. See sensor layout guide.)
- * (3' minimum length. 7' minimum length with FXH & EM. Not available with ALH & EM. G & ST mounting only.)
- Mounting**
- Flush (FL0, GR0 & AF0) **G**
- Lay-in Grid **ST**
- Slot Tee / Tegular **TF**
- Trim Flange Drywall **XFF**
- Mud-in Trimless Drywall **G**
- Regressed (AF1, FL1, FL2, FL4, GR1, GR2 & GR4) **XF**
- Trimless Drywall **G**
- Factory Options**
- (See Ordering Guide on page 5 for ordering details for DC, EC, EM & ECD.)
- Chicago Plenum **CP**
- (Not available with flex whip)
- Daylight Circuit **_DC**
- Emergency Circuit **_EC**
- Emergency Battery Pack† **_EM**
- Emergency Control Device† **_ECD**
- 6' New York City Flex Whip (120V only) **FNY1**
- 6' New York City Flex Whip (277V only) **FNY2**
- 6' Flex Whip **FW**
- Fixed Housing with Unlit Sliding Sleeves **SSB**
- (Set of two unlit 12" sleeves. Fixed housing in straight runs only. FL2, FL4, GR2 & GR4 only. 3' minimum luminaire length.)
- Finish**
- Matte White Housing **WH**
- Luminaire Length**
- Specify luminaire/row length in 1" increments **_ft_in**
- (2' minimum length)
- Pattern Options**
- Specify patterns based on wall-to-wall dimensions **PAT**
- (See Pattern Configurations for example. Example: FSM4PR-ALH-FL2-625LF-35K-1C-120-LD1-G-WH-PAT-10-ICR-20-ICR-10)

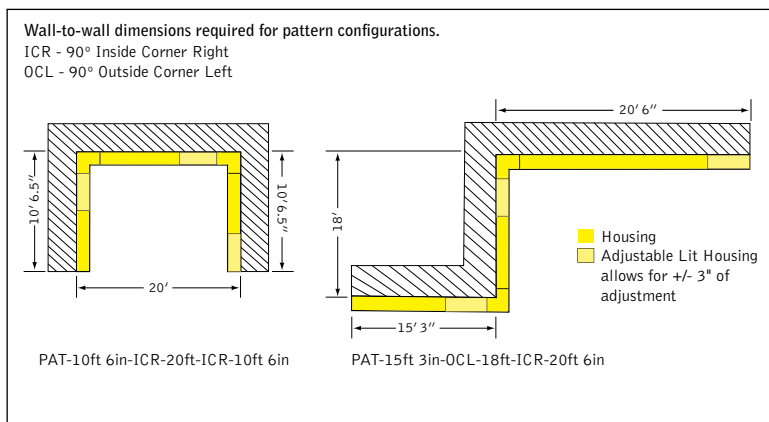


Options in orange qualify for the Quickship program. Run lengths in 1' increments, 1000' total. Refer to Quickship Guide for complete details.

fixture:

project:

PATTERN CONFIGURATIONS



TW 4' PERFORMANCE CHARTS

Lumen Output	Nominal Lumens	Tested System Watts	LPW			
			FL0	FL1	FL2	FL4
275LF	1100	13.30	83.2	80.3	77.5	74.8
375LF	1500	17.34	86.5	83.5	80.6	77.7
625LF	2500	27.84	89.5	86.4	83.4	80.5
875LF	3500	37.22	94.2	90.9	87.7	84.7
1000LF	4000	42.39	94.4	91.2	88.0	84.9

Based on 2700K, 80 CRI, 4' lengths. Lumen output may vary +/- 5%. Actual wattage may vary +/- 5%.

Lumen Output	Nominal Lumens	Tested System Watts	LPW					
			GR0	GR1	GR2	GR4	AF0	AF0
275LF	1100	13.30	89.8	87.2	84.7	82.1	93.4	87.7
375LF	1500	17.34	93.4	90.6	88.1	85.4	97.1	91.2
625LF	2500	27.84	96.7	93.9	91.2	88.4	100.5	94.4
875LF	3500	37.22	101.7	98.8	96.0	93.0	105.8	99.4
1000LF	4000	42.39	102.0	99.1	96.2	93.3	106.0	99.6

Based on 2700K, 80 CRI, 4' lengths. Lumen output may vary +/- 5%. Actual wattage may vary +/- 5%.

Lumen Multipliers

CRI	Multiplier
80+	1.00
90+	0.89

Wattage Multipliers

CCT	Multiplier
2700K	1.00
3000K	0.92
3500K	0.88
4000K	0.86
5000K	0.85
5700K	0.87
6500K	0.90



TUNABLE WHITE

Luminaire Series

Seem 4 LED Perimeter **FSM4PR**

Housing Type

Adjustable Lit Housing **ALH**

(Allows for +/- 3" adjustment to overall run length. 3' minimum luminaire length.)

Fixed Housing

FXH
(not recommended for wall to wall installations)

Shielding

Flush Lens* **FL0**

1.0" Regress **FL1**

2.5" Regress **FL2**

4.0" Regress **FL4**

Flush Grazer* **GR0**

1.0" Regress Grazer **GR1**

2.5" Regress Grazer **GR2**

4.0" Regress Grazer **GR4**

Flush Asymmetric Room Fill* **AF0**

1.0" Regress Asymmetric Room Fill **AF1**

*(Not available with Unlit Sliding Sleeves - SSB)

Lumen Output

275 Lumens per foot **275LF**

(3' min with DITW, 4' min with LT1)

375 Lumens per foot **375LF**

(3' min with LT1)

625 Lumens per foot **625LF**

875 Lumens per foot* **875LF**

1000 Lumens per foot* **1000LF**

*(3' 6" min with ALH)

Color Temperature

Tunable White: 2700-6500K, 80+ CRI **2765T**

Tunable White: 2700-6500K, 90+ CRI **92765T**

Circuits & Zones

1 Circuit, non-emergency **1C**

Consult Ordering Guide on page 5 for multiple circuiting and zoning options

_C_Z_DL

Voltage

120/277 UNV Volt **UNV**

Control System & Dimming Level

Lutron T-Series - 1% Dimming **LT1**

DALI - 1% Dimming **D1TW**

(DT6 control. Requires two addresses, one for intensity & one for CCT tuning. Consult factory for DT8.)

Acuity nLight - 1% Dimming **NLT1**

Enlighted Smart Sensor - 1% Dimming **ENL1**

(Remote mounted sensor. See sensor layout guide.)

†(Consult factory)

Mounting

Flush Lay-in Grid **G**

(FL0, GR0 & AF0) Slot Tee / Tegular **ST**

Trim Flange Drywall **TF**

Mud-in Trimless Drywall **XFF**

Regressed Grid **G**

(AF1, FL1, FL2, FL4, GR1, GR2 & GR4) Trimless Drywall **XF**

Factory Options

(See Ordering Guide on page 5 for ordering details for DC, EC, EM & ECD.)

Chicago Plenum **CP**

(Not available with flex whip)

Daylight Circuit **_DC**

Emergency Circuit **_EC**

Emergency Battery Pack† **_EM**

Emergency Control Device† **_ECD**

†(Consult factory)

6' New York City Flex Whip (120V only) **FNY1**

6' New York City Flex Whip (277V only) **FNY2**

6' Flex Whip **FW**

Fixed Housing with Unlit Sliding Sleeves **SSB**

(Set of two unlit 12" sleeves. Fixed housing in straight runs only. FL2, FL4, GR2 & GR4 only. 3' minimum luminaire length.)

Finish

Matte White Housing **WH**

Luminaire Length

Specify luminaire/row length in 1" increments **_ft_in**

(2' minimum length)

Pattern Options

Specify patterns based on wall-to-wall dimensions **PAT**

(See Pattern Configurations for example)

Example: FSM4PR-ALH-FL2-625LF-35K-1C-120-LD1-G-WH-PAT-10-ICR-20-ICR-10

Focal Point provides flexibility in meeting the needs of each project by integrating with several building lighting control systems. A variety of sensors, drivers and other components can be specified that allow the luminaires to communicate with wired and wireless networks. All zoning can be digitally reconfigured through the application software. Daylight harvesting, occupancy sensing, integration with HVAC systems, and individual controls enable the monitoring and modulating of light levels and temperature in order to save energy, reduce costs and maximize occupants' comfort. All Connected Solutions luminaires require a compatible building control system.†

Connected Solution	Ordering Code	Model #**	Protocol	Compatible Networks*	Occupancy & Daylight	Temperature Reporting	Communication to Luminaire	Drivers
 legrand WATTSTOPPER®	DLM1	LMFC-011	DLM	DLM	Enabled	No	Wired 	Advance by Signify , Optotronic by eldoLED
	LMFS1	LMFS-601 & LMFI-111	DLM Wireless	DLM	Enabled	No	Wireless	Advance by Signify
LMFSD	LMFS-601	Optotronic by eldoLED (Dexal)						
 COOPER Lighting Solutions	WLXP	OEM-WAA	WaveLinx Wireless	WaveLinx Pro Trellix	Enabled	No	Wireless (WaveLinx Pro Wireless Area Controller)	Advance by Signify
 CRESTRON	D11	Specified Driver	DALI	Crestron Züm Wireless & SpaceBuilder	Enabled	No	Wired	eldoLED ECOdrive
	L11		0-10V					Advance by Signify
 ENCELIUM	CLM1	ZBHA-CLM-DIM-ENC	ZigBee	Encelium X Light Management System	Enabled	No	Wireless	Optotronic by eldoLED Advance by Signify
 Enlighted	ENL1	SU-5E-IOT	Enlighted RF	Enlighted	Integrated	Yes	Wireless	Advance by Signify
 LUTRON	LH1	LDE1	EcoSystem	Quantum, Energi Savr Node, Energi TriPak	Enabled	No	Wired	Lutron Hi-Lume
 nLIGHT	NLT1	nEPS-60-IO	nLight	nLight	Enabled	No	Wired 	eldoLED ECOdrive , eldoLED SOLOdrive
							Wireless	
 NA LIGHTING CONTROLS	NXE1	NXFM-LV	NX	NX Distributed Intelligence	Enabled	No	Wired 	Optotronic by eldoLED

*Not all compatible networks may be listed. **For performance data and additional control system details please visit the connected solutions manufacturer websites. Primary drivers are listed in **bold**. To specify a particular driver please consult factory. †Controls systems supplied by others.