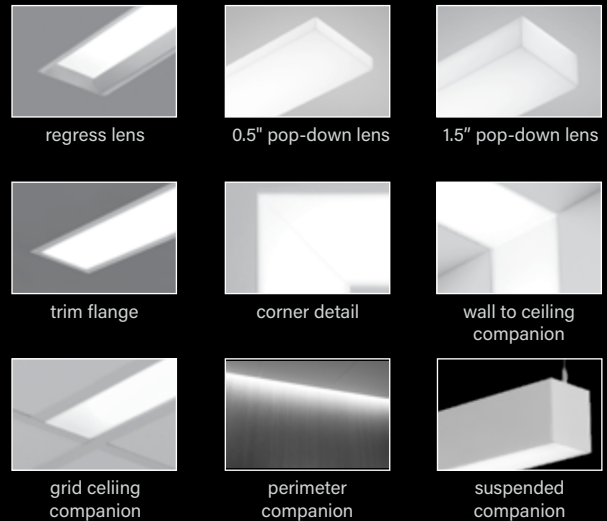


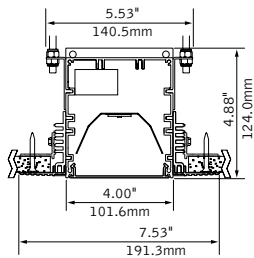
Seem® 4 Drywall/Hard/Specialty Ceiling

LED



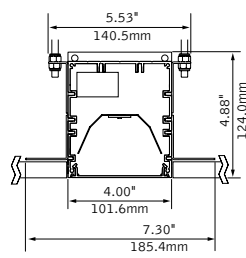
DIMENSIONAL DATA

Asymmetric, Batwing, Flush Lens Trimless mud-in



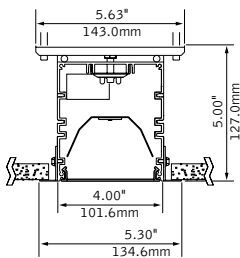
note: 0.375"min - 2.125"max ceiling thickness

Hard surface

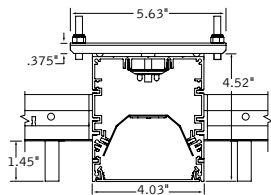


note: 0.375"min - 2.125"max ceiling thickness

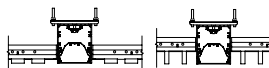
Trim flange



No Flange

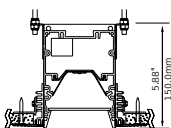


Specialty ceiling examples

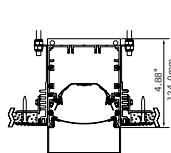


Additional Shielding Options

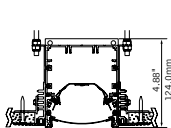
Regress lens



1.5" Pop-Down lens



0.5" Pop-Down lens



FEATURES

Extruded aluminum 4" aperture recessed slot LED integrates with drywall or hard ceilings or walls in a variety of mounting styles for a clean, unobtrusive aesthetic.

Individual units and continuous runs in 1" increments.

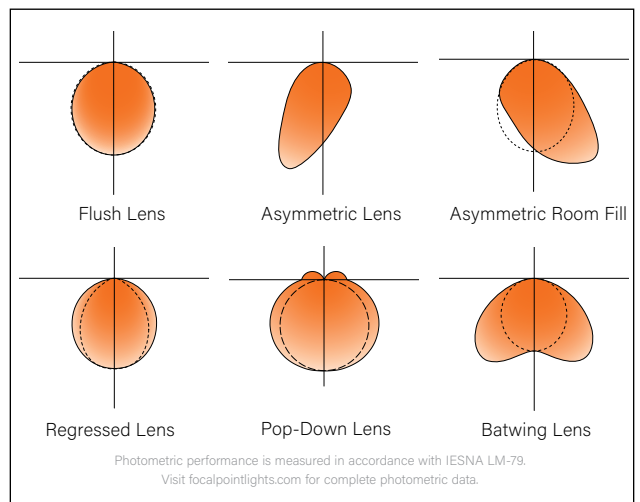
Available in flush, asymmetric, asymmetric room fill, batwing, regress, 0.5" or 1.5" pop-down lens.

Tunable White: Supports human activity, well-being, and preferences with a light quality that evolves throughout the day.

Connected Solutions: Integrates with wired and wireless building lighting control systems.

PoE compatible: Integrates with Power over Ethernet lighting systems via standard, low-voltage wires.

DISTRIBUTIONS

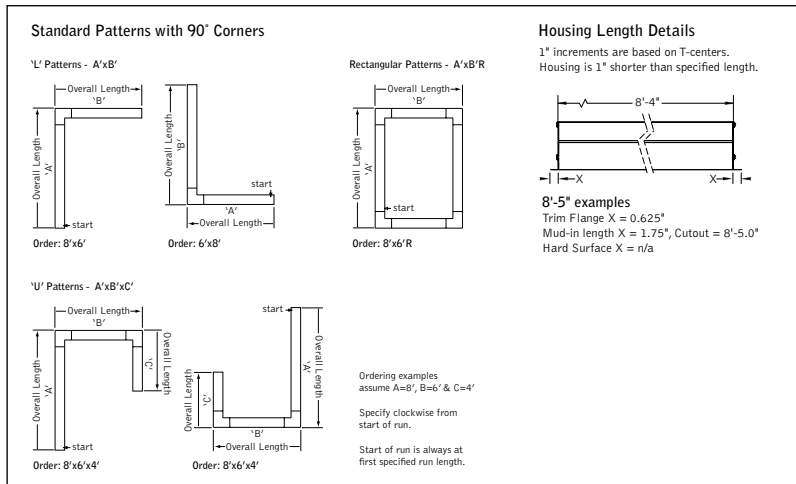


Photometric performance is measured in accordance with IESNA LM-79. Visit focalpointlights.com for complete photometric data.

fixture:

project:

DETAILS



4' PERFORMANCE CHART

Lumen Output	Nominal Lumens	Tested System Watts	LPW			
			BW	FL	AS	AF
275LF	1100	10	104	100	122	124
375LF	1500	13	113	108	126	129
625LF	2500	22	112	107	126	128
875LF	3500	32	109	105	125	127
1000LF	4000	37	109	104	124	126
1125LF	4500	44	108	104	122	124
1250LF	5000	49	107	102	120	123

Based on 3500K, 80 CRI, 4' lengths. Lumen multiplier: 90+ CRI = 0.87. Lumen output may vary +/- 5%. Actual wattage may vary +/- 5%.

4' PERFORMANCE CHART - REGRESS

Lumen Output	Nominal Lumens	Tested System Watts	LPW	
			SR	SRXP
275LF	1100	12	79	98
375LF	1500	16	84	109
625LF	2500	26	84	110
875LF	3500	39	80	105
1000LF	4000	46	77	101
1125LF	4500	53	76	101
1250LF	5000	59	75	99

Based on 3500K, 80 CRI, 4' lengths. Lumen multiplier: 90+ CRI = 0.87. Lumen output may vary +/- 5%. Actual wattage may vary +/- 5%.

4' PERFORMANCE CHART - POP-DOWN

Lumen Output	Nominal Lumens	0.5"		1.5"	
		Tested System Watts	LPW	Tested System Watts	LPW
275LF	1100	14	80	13	85
375LF	1500	19	86	18	86
625LF	2500	32	79	30	84
750LF	3000	36	81	36	82

Based on 3500K, 80 CRI, 4' lengths. Lumen multiplier: 90+ CRI = 0.87. Lumen output may vary +/- 5%. Actual wattage may vary +/- 5%.

STANDARD WHITE

Luminaire Series

Seem 4 LED **FSM4L**

Shielding

Asymmetric Lens **AS**

Asymmetric Room Fill **AF**

Batwing Lens **BW**

Flush Satin Lens **FL**

0.5" Pop-Down Lens (750LF max.) **PD05**

1.5" Pop-Down Lens (750LF max. individual units only) **PD15**

Regress Lens* **SR**

Regress High Performance Lens* **SRXP**

(Ceiling applications only)

Lumen Output

275 Lumens per foot (Not available with LH1) **275LF**

375 Lumens per foot (Not available with LH1) **375LF**

625 Lumens per foot **625LF**

(BW, FL & SR 3' min. individual units only with LH1. SRXP 4' min. individual units only with LH1.)

750 Lumens per foot (Pop-Down Lenses only) **750LF**

875 Lumens per foot **875LF**

(SR & SRXP 3' min. individual units only with LH1.)

1000 Lumens per foot **1000LF**

1125 Lumens per foot **1125LF**

1250 Lumens per foot **1250LF**

Color Temperature

2700K, 80+ CRI or 90+ CRI **27K or 927K**

3000K, 80+ CRI or 90+ CRI **30K or 930K**

3500K, 80+ CRI or 90+ CRI **35K or 935K**

4000K, 80+ CRI or 90+ CRI **40K or 940K**

Circuits & Zones

1 Circuit, non-emergency **1C**

Consult Ordering Guide on page 6 for multiple circuiting and zoning options

Control System & Dimming Level

0-10V - 10% Dimming **LD1**

0-10V - 1% Dimming **L11**

Low Voltage, PoE compatible **LVN**

(No driver. Not available with EM or EC. LV Voltage only)

Lutron Hi-Lume EcoSystem (LDE1) - 1% Dimming (625LF min.) **LH1**

DALI 1% Dimming (1000LF max.) **D11**

Wattstopper Fixture Sensor** **LMFS1**

Low Density - 1% Dimming

Wattstopper Fixture Sensor** **LMFSD**

High Density - 1% Dimming

Lutron Athena Wireless Sensor** **LAWS**

Enlighted Smart Sensor - 1% Dimming** **ENL1**

WaveLinx Pro - 1% Dimming** **WLXP**

(XF1, XF2 and XFF only)

** (XF1, XF2 and XFF only. 3' min. length. 7' min. with ECD/EM.)

Not available with Pop-Down Lenses. See sensor layout guide

Ceiling Configuration

No Flange for specialty ceilings **NF**

(Ex. slat, panel, cloud systems. 3' minimum with Lutron.)

Trim Flange Drywall (3' minimum with Lutron) **TF**

Trim Flange Wood (3' minimum with Lutron) **TFW**

Mud-in Trimless, pre-set for 1/2" Drywall **XF1**

Mud-in Trimless, pre-set for 5/8" Drywall **XF2**

Mud-in Trimless, set thickness in field **XFF**

(Mounting equipment assembled in field)

Non-Drywall Hard Surface **XFN**

Hard Surface, Wood **XFW**

Factory Options

(See page 6 for ordering details for DC, EC, EM & ECD.)

Chicago Plenum (Not available with Flex Whip) **CP**

Daylight Circuit **_DC**

Emergency Circuit **_EC**

Emergency Battery Pack† **_EM**

Emergency Control Device† **_ECD**

† (4' minimum. 6' minimum with patterns. 120/277 Volt only. Not available at corners.)

6' New York City Flex Whip 120V or 277V **FNY1 or FNY2**

6' Flex Whip **FW**

Finish

Matte White Housing **WH**

Luminaire Length

Specify luminaire/row length in 1" increments **_ft_in**

(2" minimum. Housing length is 1" shorter than specified. Leave blank for patterns.)

Pattern Options

(4' min. length. Not available with Pop-Down Lenses. Consult factory for other pattern options.)

'L' pattern **A' x B'**

'U' pattern **A' x B' x C'**

Rectangular pattern **A' x B' R**

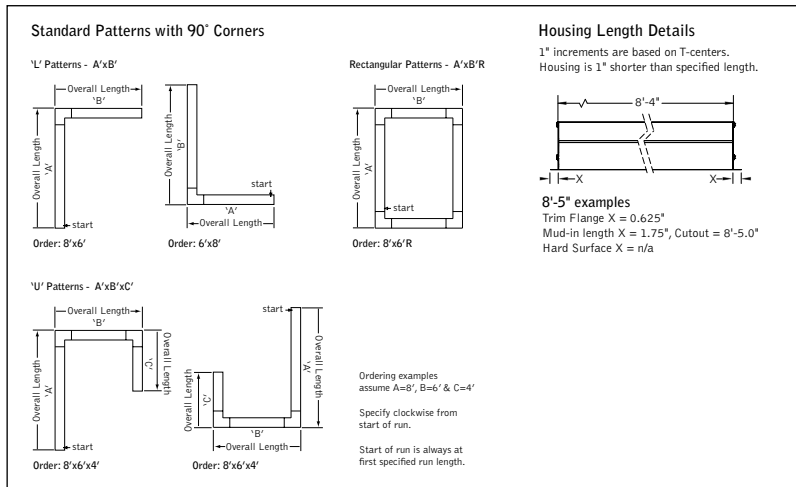


Options in orange qualify for the Quickship program. 1000' total, 48' maximum per pattern section. Refer to Quickship Guide for complete details including EM/EC options.

fixture:

project:

DETAILS



TUNABLE WHITE

Luminaire Series

Seem 4 LED FSM4L

Shielding

Batwing Lens BW

Flush Satin Lens FL

0.5" Pop-Down Lens (750LF max.) PD05

1.5" Pop-Down Lens (750LF max. individual units only) PD15

Regress Lens* SR

Regress High Performance Lens* SRXP

Lumen Output

275 Lumens per foot 275LF

(BW, FL, SR & SRXP 3' min. with D1TW, SR, SRXP, PD05 & PD15 3' min. with LT1, FL & BW 4' min. with LT1.)

375 Lumens per foot 375LF

(BW, FL, SR & SRXP 3' min.)

625 Lumens per foot 625LF

750 Lumens per foot (Pop-Down Lenses only) 750LF

875 Lumens per foot 875LF

1000 Lumens per foot 1000LF

1125 Lumens per foot 1125LF

Color Temperature

Tunable White: 2700-6500K, 80+ CRI 2765T

Tunable White: 2700-6500K, 90+ CRI 92765T

Circuits & Zones

1 Circuit, non-emergency 1C

Consult Ordering Guide on page 6 for multiple circuiting and zoning options _C_Z_DL

Voltage

120/277 UNV Volt UNV

Control System & Dimming Level

Lutron T-Series - 1% Dimming LT1

DALI 1% Dimming D1TW

(DT6 control. Requires two addresses, one for intensity & one for CCT tuning. Consult factory for DT6.)

Lutron Athena Wireless Sensor** LAWS

Enlighted Smart Sensor - 1% Dimming** ENL1

(**Consult factory. Not available with Pop-Down lenses. See sensor layout guide)

Ceiling Configuration

No Flange for specialty ceilings NF

(Ex. slat, panel, cloud systems. 3' minimum with Lutron.)

Trim Flange Drywall TF

(3' minimum with Lutron)

Trim Flange Wood TFW

(3' minimum with Lutron)

Mud-in Trimless, pre-set for 1/2" Drywall XF1

Mud-in Trimless, pre-set for 5/8" Drywall XF2

Mud-in Trimless, set thickness in field (Mounting equipment assembled in field) XFF

Non-Drywall Hard Surface XFN

Hard Surface, Wood XFW

Factory Options

(See page 6 for ordering details for DC, EC, EM & ECD.)

Chicago Plenum CP

(Not available with Flex Whip)

Daylight Circuit _DC

Emergency Circuit _EC

Emergency Battery Pack† _EM

Emergency Control Device† _ECD

†(Consult factory.)

6' New York City Flex Whip 120V or 277V FNY1 or FNY2

6' Flex Whip FW

Finish

Matte White Housing WH

Luminaire Length

Specify luminaire/row length in 1" increments _ft_in

(2" minimum. Housing length is 1" shorter than specified. Leave blank for patterns.)

Pattern Options

(4' min. length. Not available with Pop-Down Lenses. Consult factory for other pattern options.)

'L' pattern A' x B'

'U' pattern A' x B' x C'

Rectangular pattern A' x B' R

TW 4' PERFORMANCE CHART

Lumen Output	Nominal Lumens	Tested System Watts	LPW	
			BW	FL
275LF	1100	13.30	87.3	83.2
375LF	1500	17.34	90.8	86.5
625LF	2500	27.84	94.0	89.5
875LF	3500	37.22	98.9	94.2
1000LF	4000	42.39	99.2	94.4
1125LF	4500	50.27	93.9	89.4

Based on 2700K, 80CRI, 4' lengths. Lumen output may vary +/- 5%. Actual wattage may vary +/- 5%.

TW 4' PERFORMANCE CHART - REGRESS

Lumen Output	Delivered Lumens	Tested System Watts	LPW	
			SR	SRXP
275LF	1100	14.72	74.4	88.6
375LF	1500	19.36	77.5	92.3
625LF	2500	31.47	79.6	94.8
875LF	3500	42.01	83.4	99.4
1000LF	4000	50.68	79.2	94.3

Based on 2700K, 80CRI, 4' lengths. Lumen output may vary +/- 5%. Actual wattage may vary +/- 5%.

TW 4' PERFORMANCE CHART - POP-DOWN

Lumen Output	Nominal Lumens	0.5"		1.5"	
		Tested System Watts	LPW	Tested System Watts	LPW
275LF	1100	17.14	64.7	16.33	67.3
375LF	1500	22.79	66.5	21.58	70.0
625LF	2500	35.49	70.6	33.96	73.8
750LF	3000	42.39	70.8	40.28	74.5

Based on 2700K, 80CRI, 4' lengths. Lumen output may vary +/- 5%. Actual wattage may vary +/- 5%.

Lumen Multipliers

CRI	Multiplier
80+	1.00
90+	0.89

Wattage Multipliers

CCT	Multiplier
2700K	1.00
3000K	0.92
3500K	0.88
4000K	0.86
5000K	0.85
5700K	0.87
6500K	0.90

Focal Point provides flexibility in meeting the needs of each project by integrating with several building lighting control systems. A variety of sensors, drivers and other components can be specified that allow the luminaires to communicate with wired and wireless networks. All zoning can be digitally reconfigured through the application software. Daylight harvesting, occupancy sensing, integration with HVAC systems, and individual controls enable the monitoring and modulating of light levels and temperature in order to save energy, reduce costs and maximize occupants' comfort. All Connected Solutions luminaires require a compatible building control system.†

Connected Solution	Ordering Code	Model #**	Protocol	Compatible Networks*	Occupancy & Daylight	Temperature Reporting	Communication to Luminaire	Drivers
 legrand [®] WATTSTOPPER [®]	LMFS1	LMFS-601 & LMFI-111	DLM Wireless	DLM	Enabled	No	Wireless	Advance by Signify
	LMFSD	LMFS-601						Optotronic by eldoLED (Dexal)
 COOPER Lighting Solutions	WLXP	OEM-WAA	WaveLinx Wireless	WaveLinx Pro Trellix	Enabled	No	Wireless (WaveLinx Pro Wireless Area Controller)	Advance by Signify
 CRESTRON	D11	Specified Driver	DALI	Crestron Zūm Wireless & SpaceBuilder	Enabled	No	Wired	eldoLED ECOdrive
	L11		0-10V					Advance by Signify
 Enlighted	ENL1	SU-5E-IOT	Enlighted RF	Enlighted	Integrated	Yes	Wireless	Advance by Signify
 LUTRON	LAWS	A-WN-D01-OCC-WH	DALI, 0-10V	Athena Wireless	Integrated	No	Wireless	Advance by Signify
	LH1	LDE1	EcoSystem	Quantum, Energi Savr Node, Energi TriPak	Enabled	No	Wired	Lutron Hi-Lume

*Not all compatible networks may be listed. **For performance data and additional control system details please visit the connected solutions manufacturer websites. Primary drivers are listed in **bold**. To specify a particular driver please consult factory. †Controls systems supplied by others.