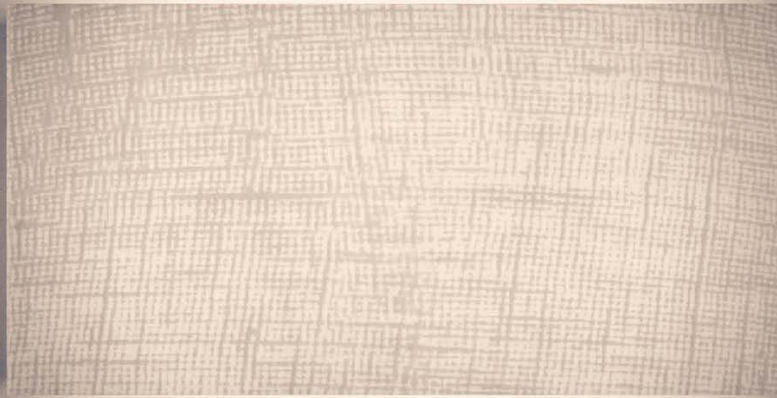


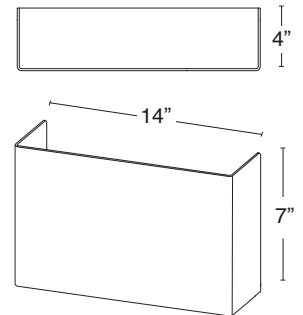
# Rectangle 14"W x 7"H



**RE14W7H** is a personal approach to building the perfect fixture for your project. Sconce can be ordered as a stand alone fixture or you can add one of our decorative elements.

**REVIT & IES FILES AVAILABLE**

<b>MODULE</b>	Available with rectangular module, 15W, for optimal light output. Circular 10W module available, however not optimal for lamp shade illumination. Both modules field replaceable.
<b>RATED LIFETIME</b>	L70 100,000+ hours
<b>SHADE</b>	Vandal resistant. IK10 UL Certified. Protected against 20 joules of impact.
<b>CERTIFICATIONS</b>	UL Damp Listed, IK10 UL Certified, Title24 Optional JA8
<b>WARRANTY</b>	10 Years
<b>WATTAGE</b>	15W, 10W
<b>CRI</b>	90+
<b>DIMMING</b>	Triac/ELV
<b>WEIGHT</b>	3 LBS
<b>PROJECTION</b>	4", ADA Compliant



FIXTURE	MODULE	WATTS	DELIVERED LUMENS: RESIN SHADE	DELIVERED LUMENS: WHITE OPAL ACRYLIC	INPUT
RE14W7H	AU-R15W	15W	1115	1394	120V, 277V
	AU-C10W	10W	696	870	120V, 277V

Note: For Gold Shimmer, Linear Cross, and Cayenne resin, multiply delivered lumens by .8

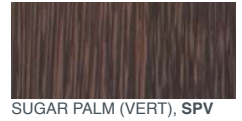
# Optional Decorative Elements

Assembly required, refer to installation guide

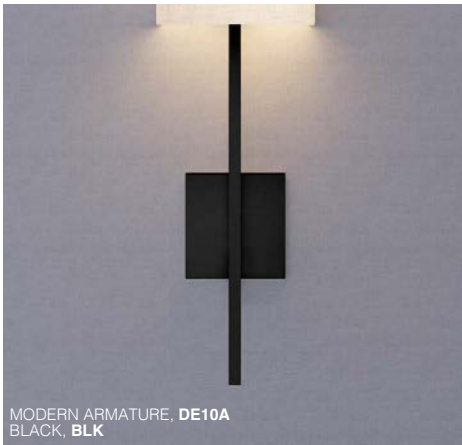
Available in Wood or Metal Powder Coat Finish:



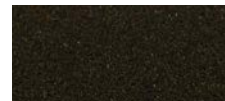
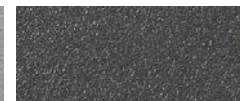
U-Channel & Door Panel  
Decorative Elements Only



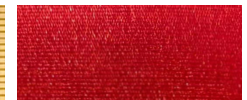
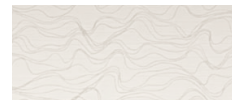
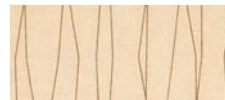
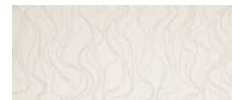
Metal with Powder Coat Finish:



Custom RAL colors also available (**CP**)



Architectural Resin



Please Contact Sales Rep for Resin Samples

