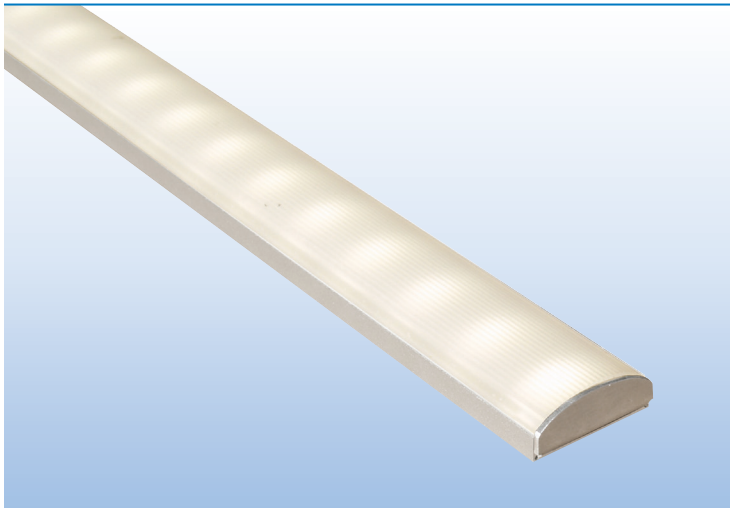
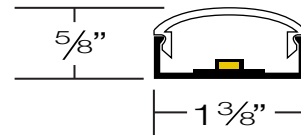


DISPLAY / UNDERCABINET / TASK / INDIRECT / ACCENT



PROJECT:
TYPE:



SPECIFICATIONS

HOUSING	Extruded aluminum housing. Continuous runs available.
FINISH	Satin anodized or white paint finish standard. Custom finish optional.
LENS	Extruded DR acrylic, snap-on frosted widespread lens.
LED DRIVER	Remote, Universal Voltage (120–277 / 12VDC) (Order Separately)
MOUNTING	Surface Mount; See page 2 for options and details.
LED's	LED Tape 50,000 Hours, 12VDC, dimmable.
CERTIFICATION	ETL/CSA listed for damp locations. 2001431 MADE IN THE USA

LED COLORS – LUMENS – WATTS

LED COLOR	LUMENS	WATTS
WHITE 2700K	152 / FT	2.6W / FT
WHITE 3000K	195 / FT	2.6W / FT
WHITE 3500K	198 / FT	2.6W / FT
WHITE 4200K	222 / FT	2.6W / FT

FIXTURE LENGTHS

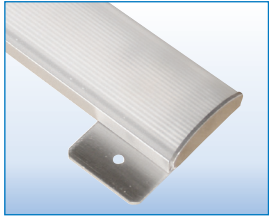
NOMINAL LENGTH	1'	2'	3'	4'	5'	6'	7'	8'	9'	10'	11'	12'
ACTUAL LENGTH	14"	26"	38"	50"	62"	74"	84"	98"	110"	122"	134"	146"
TOTAL WATTS	2.6W	5.2W	7.8W	10.4W	13W	15.6W	18.2W	20.8W	23.4W	26W	28.6W	31.2W

Consult factory for fixtures longer than 12' or custom fixture lengths.

PART NUMBER

SERIES	COLOR	LED DRIVER	MOUNTING	FINISH	LENGTH
ALX4-SP	27K 2700K 3K 3000K 35K 3500K 4K 4000K	R REMOTE * ORDER SEPARATELY SEE NEXT PAGE FOR OPTIONS	TM TAB MOUNT IM INSIDE MOUNT DFT TAPE MOUNT	S SATIN W WHITE C CUSTOM	1' 7' 2' 8' 3' 9' 4' 10' 5' 11' 6' 12' OTHER SPECIFY

MOUNTING OPTIONS & LEAD WIRES



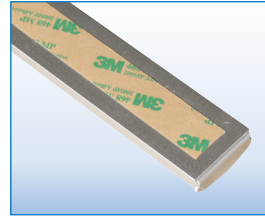
TM – TAB MOUNT

Mounting Tab at Both Ends
(Screws by Others)



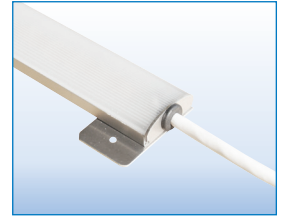
IM – INSIDE SCREW MOUNT

1/4" Inside Mounting Holes
(Screws by Others)



DFT – TAPE MOUNT

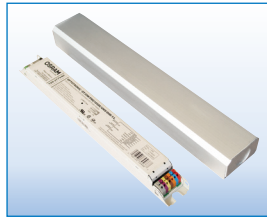
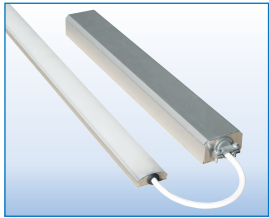
3M Double Face Tape



3' LEAD WIRE STANDARD

Right Side Lead Wire for
TM – Tab Mounting
(See Picture Above)
Specify if longer than
3' is required.

REMOTE LED DRIVERS WITH ENCLOSURE Universal Voltage (120 – 277 / 12VDC)



PART NO.	WATTS	DIMENSIONS
PL-LD – O20W – 12	20W	8" x 2" x 1 1/4"
PL-LD – O60W – 12	60W	14" x 2" x 2"
PL-LD – O60W – 12 – DIM	60W	14" x 2" x 2" (0-10V DIMMING)

Fixtures can be grouped on a single driver.

The number of fixtures X watts/fixture = total watts to choose the correct driver(s).

The number of fixtures connected to a single driver must not exceed driver max wattage ratings; Refer to chart below.

15' Max Remote Driver Distance

MAXIMUM FEET PER DRIVER

20W DRIVER	60W DRIVER
7' MAX (18.2W)	16' MAX (41.6W)

Maximum continuous run on a single feed not to exceed 16'.

POLAR GRAPH

