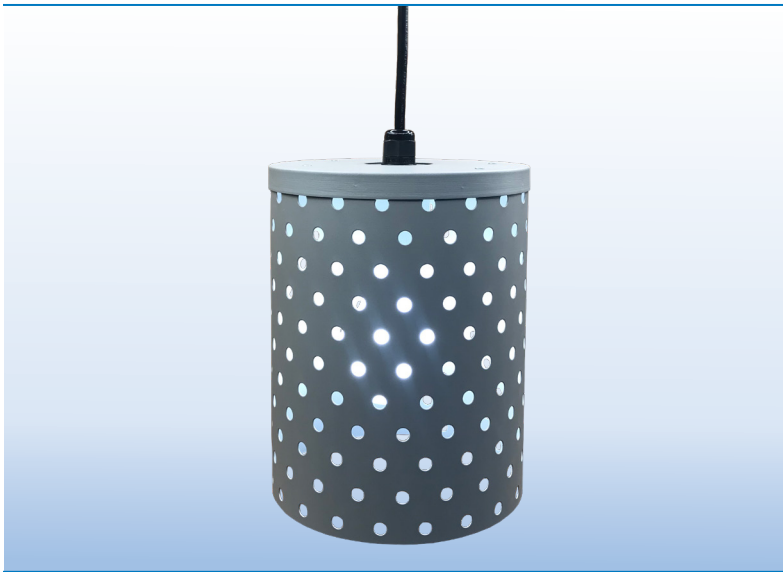


WET LOCATION OUTDOOR / INDOOR SUSPENDED





PROJECT:
TYPE:

## APPLICATIONS

- PERGOLAS
- TRELLIS
- TREES
- CANOPIES
- OPEN STRUCTURES

## SPECIFICATIONS

<b>SHADE</b>	Brass or aluminum perforated tubes in various sizes. Consult factory for other type of material, custom shapes and sizes
<b>FINISH</b>	Acid etched aged brass, verde green or custom powder coat. (Provide RAL No)
<b>SOCKET</b>	Medium base glazed porcelain socket
<b>CORD</b>	18/3 SVT black jacket, 10' standard. Longer length available, specify
<b>VOLTAGE</b>	120 volts or 12 volts
<b>LAMP</b>	LED medium base 120v and 12v, see page 3 for style, color, wattage and voltage details and options
<b>TRANSFORMER</b>	12VAC class II remote transformer required only for 12v lamps, see page 2 for details and options
<b>CERTIFICATION</b>	ETL listed for permanent damp or wet installations  2001431  MADE IN THE USA

## PART NUMBER

SERIES	FINISH	VOLTAGE	LAMP	CORD LENGTH
DDPT4/8 4 X 8"	AB AGED BRASS	120 120 V	SELECT PART NO FROM PAGE 3	STD 10' STANDARD
DDPT4/12 4 X 12"	VB VERDE BRASS	12 12 V		SPECIFY IF LONGER OR SHORTER IS REQUIRED
DDPT6/8 6 X 8"	BA BRUSHED ALUMINUM	12V REQUIRES LOW VOLTAGE TRANSFORMER (Order separately)		
DDPT6/12 6 X 12"	PCS POWDER COAT SILVER PCW POWDER COAT WHITE PCB POWDER COAT BLACK PCC POWDER COAT CUSTOM (Provide RAL No.)			

## SERIES



**DDPT 4/8**  
4" DIAMETER



**DDPT 4/12**  
4" DIAMETER



**DDPT 6/8**  
6" DIAMETER

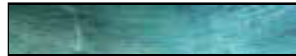


**DDPT 6/12**  
6" DIAMETER

## FINISHES



**AB**  
AGED BRASS  
(Acid Etched)



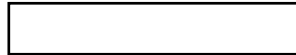
**VB**  
VERDE BRASS  
(Acid Etched)



**PCB**  
POWDER COAT  
BLACK



**BA**  
BRUSHED  
ALUMINUM



**PCW**  
POWDER COAT  
WHITE



**PCS**  
POWDER COAT  
SILVER



**PCC**  
CUSTOM  
(Provide RAL No)

## TRANSFORMERS



### CLASS 2 OUTDOOR MAGNETIC TRANSFORMER REQUIRED FOR 12V LAMP ONLY

PLT2 - 60 - 12	60W - 120/12VAC - 1/5A	6 3/4" X 4 7/8" X 4 5/8"	5 LBS
PLT2 - 100 - 12	100W - 120/12VAC - 2/5A	6 3/4" X 4 7/8" X 4 5/8"	10 LBS

Outdoor listed enclosure NEMA 3R  
5A Output circuit protection  
Dimmable with MLV dimmers only  
Potted for quiet operation and long life  
ETL listed, Meets UL 1571, 1838 and Article 411 of N.E.C

## TRADITIONAL LAMPS, Wet Rated, Outdoor / Indoor



**S14, 1.5W, 150L**

S14/C/24/150 24K, CLEAR  
 S14/W/24/150 24K, WHITE  
 S14/C/27/150 27K, CLEAR  
 S14/W/27/150 27K, WHITE



**A19, 7.5W, 800L**

A19/C/27/800 27K, CLEAR  
 A19/W/27/800 27K, WHITE  
 A19/C/30/800 30K, CLEAR  
 A19/W/30/800 30K, WHITE



**G25, 3.5W, 350L**

G25/C/24/350 24K, CLEAR  
 G25/W/24/350 24K, WHITE  
 G25/C/27/350 27K, CLEAR  
 G25/W/27/350 27K, WHITE



**G40, 4.5W, 500L**

G40/C/24/500 24K, CLEAR  
 G40/W/24/500 24K, WHITE  
 G40/C/27/500 27K, CLEAR  
 G40/W/27/500 27K, WHITE



**T10, 3.5W, 22K, 350L**

T10/C/27/350 27K, CLEAR

## VINTAGE LAMPS Wet Rated, Outdoor / Indoor



**VC19, 3.5W, 22K, 350L**

VC19/AG/22/350  
 AMBER GLASS



**ST19, 3.5W, 22K, 350L**

ST19/AG/22/350  
 AMBER GLASS



**G25, 3.5W, 22K, 350L**

G25/AG/22/350  
 AMBER GLASS



**G40, 3.5W, 22K, 350L**

G40/AG/22/350  
 AMBER GLASS



**T10, 3.5W, 22K, 350L**

T10/AG/22/350  
 AMBER GLASS

## SPECIALTY LAMPS



**A15, 3.5W, 250L, 12V**

A15/12/27/250 27K, CLEAR  
 Low Voltage transformer required  
 INDOOR / OUTDOOR



**A19, 7.5W, 22K-65K, 800L**

A19/CT/800  
 TUNABLE WHITE  
 INDOOR ONLY



**G31, 7W, 20K-28K, 600L**

G31/MW/DW/600  
 MATT WHITE, DIM TO WARM  
 INDOOR ONLY



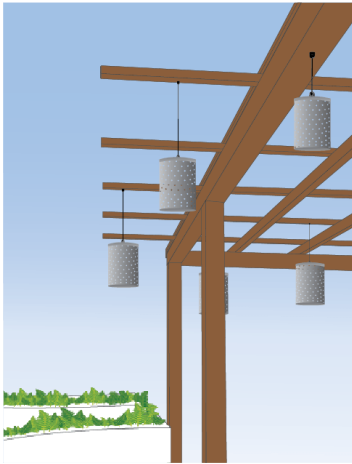
**G30, 6W, 22K, 420-480L**

G30/TG/420 TINTED GLASS  
 G30/C/480 CLEAR GLASS  
 INDOOR / ONLY

All lamps dim to <10% using ELV/TE dimmer

Not all lamps fit the smaller decodrop perforated tube models, contact customer service for additional options including lamp shapes, lumen packages, color options or additional features.

## TRELLIS / PERGOLA INSTALLATION SUGGESTIONS



### Direct Box Mount

Surface mounted conduit and  
Weather proof J. Boxes with cover (by others)  
1/2" Cord grip Supplied with fixture.



### Loop Mount / J.Box

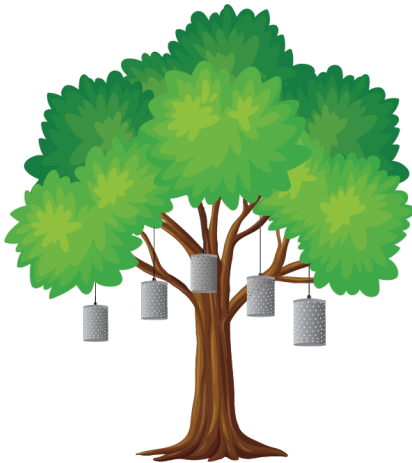
Secure cords to beam with zip ties  
Route cords to weatherproof J.Box (by others)  
J.Box for one or multiple fixtures  
1/2" Cord grip supplied with fixture



**Notes:**

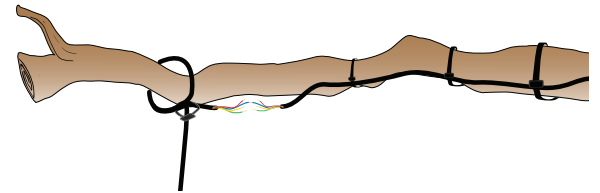
- 12 VAC systems require remote class II transformer.
- 12 VAC Systems can install without J.Box simple butt splice connection

## TREE INSTALLATION SUGGESTIONS



### Loop Mount / Butt Splices

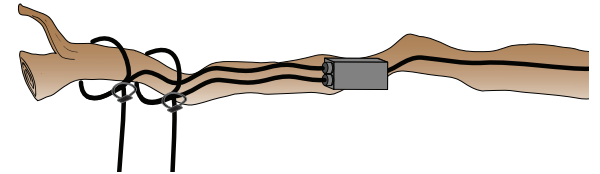
Butt splices with adhesive heat shrink for L.V  
Check codes for 120v. Use



\* Order with long cords to route several  
to central larger J.Boxes  
Secure cord to branch with zip ties  
Allowing ample service loop allowing for  
future growth and adjustment.

### Loop Mount / J.Box

Splice within weatherproof J.Box.  
Best for line & L.V installations.  
J.Box for one or multiple fixtures  
1/2" Cord grip supplied with fixture



**Note:**

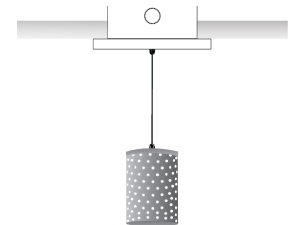
- 12 VAC systems require remote class II transformer mounted at base of tree.
- For security, best to stub up into tree using rigid or seal tight flex

## CANOPY MOUNT / RECESSED J.BOX INSTALLATION



### Canopy Recessed J. Box Mount

Recessed J.Box with w/p cover (by others)  
1/2" Cord-grip supplied with fixture to secure top of  
cord to J.Box



### Channel Mount

Aluminum channel, satin finish, custom length with  
single or multiple DECODROPS for surface or  
suspended mount



Consult factory for custom designs or custom requirements