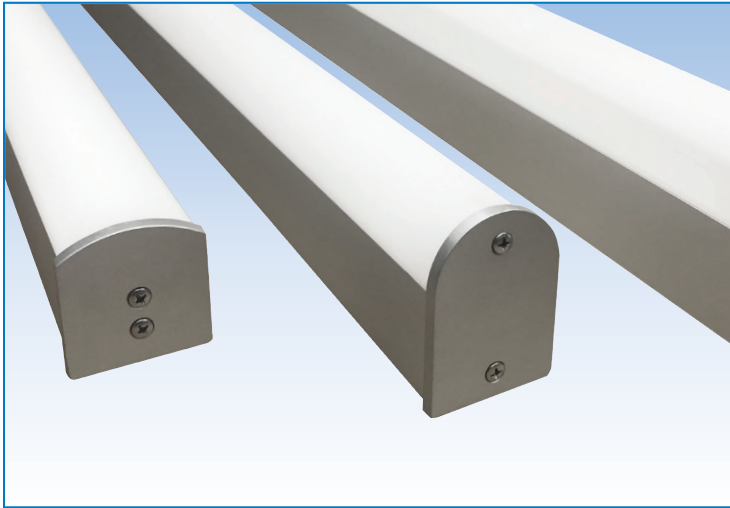
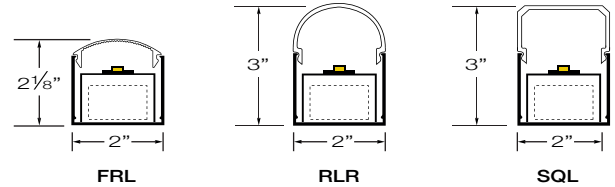


## LED WET LOCATION



PROJECT:
TYPE:



### SPECIFICATIONS

<b>HOUSING</b>	2" Wide extruded aluminum housing up to 12' long. Continuous runs available.
<b>FINISH</b>	Satin anodized or white paint finish standard. Custom finish optional.
<b>LENS</b>	3 Options extruded DR acrylic, snap-on frosted widespread lens. See page 2 for details.
<b>LED DRIVER</b>	Integral, universal voltage; 0-10V dimming standard; 1% or 10% dimming.
<b>MOUNTING</b>	<b>SURFACE MOUNT:</b> See page 2 for details and options.
<b>LED's</b>	(LED boards) 50,000 hours. (L70), 80 CRI, 2700K, 3000K, 3500K and 4000K.
<b>CERTIFICATION</b>	ETL/CSA listed for wet locations.  2001431  MADE IN THE USA  MEETS OR EXCEEDS IP65 RATING

### LED COLOR & LUMEN OPTIONS

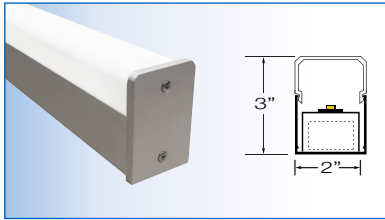
4' – 24" BOARDS		LUMENS PER FOOT – WATTS PER FOOT – LUMENS PER WATT								
LED COLOR	CRI	LOW			MEDIUM			HIGH		
WHITE 2700K	80	500 L/FT	3.5 W/FT	136 L/W	870 L/FT	6.5 W/FT	130 L/W	1160 L/FT	9.0 W/FT	127 L/W
WHITE 3000K	80	530 L/FT	3.5 W/FT	144 L/W	915 L/FT	6.5 W/FT	137 L/W	1220 L/FT	9.0 W/FT	133 L/W
WHITE 3500K	80	535 L/FT	3.5 W/FT	144 L/W	920 L/FT	6.5 W/FT	137 L/W	1225 L/FT	9.0 W/FT	133 L/W
WHITE 4000K	80	560 L/FT	3.5 W/FT	151 L/W	970 L/FT	6.5 W/FT	145 L/W	1290 L/FT	9.0 W/FT	140 L/W

Higher lumen packages available.

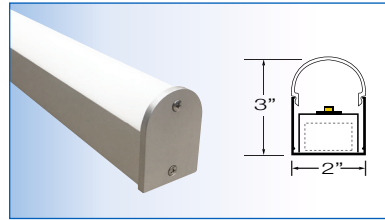
### PART NUMBER

SERIES	LUMENS	COLOR	VOLTS	FEED	OPTIONS	FINISH	LENGTH
EL2-SQL-LED	L LOW	27K 2700K	UNV1 (120/277) 1% DIM	EF END FEED	MS MOTION SENSOR	S SATIN	2' 8"
EL2-RLR-LED	M MEDIUM	3K 3000K		FD FIELD DRILL	MSP BI-LEVEL MOTION SENSOR	W WHITE	3' 9"
EL2-FRL-LED	H HIGH	35K 3500K	UNV (120/277) 10% DIM	CR CONTINUOUS RUNS	JBP J BOX PLATE	C CUSTOM	4' 10"
	CP CUSTOM PROGRAMMED (Specify Lumens/FT or Watts/FT)	4K 4000K		CONSULT FACTORY FOR CONTINUOUS RUNS FEED			5' 11"
							6' 12"
							7'

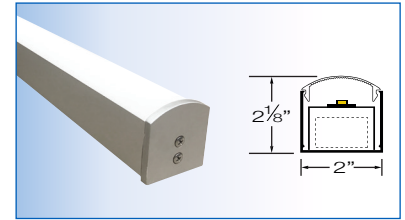
## LENS OPTIONS



**EL2 – SQL – LED**  
SQUARE LENS

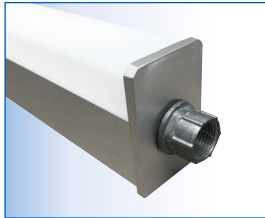


**EL2 – RLR – LED**  
ROUND LENS

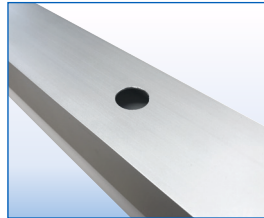


**EL2 – FRL – LED**  
FLAT ROUND LENS

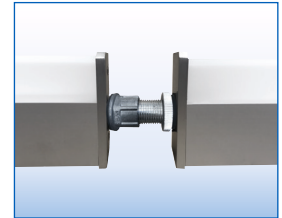
## FEED OPTIONS



**EF – END FEED**  
1/2" END FEED CONNECTOR  
(INCLUDED)



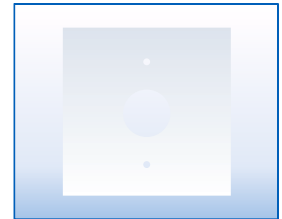
**FD – FIELD DRILL**  
ONLY ON BACK OF HOUSING



**CR – CONTINUOUS RUNS**  
AVAILABLE. CONSULT  
FACTORY FOR DETAILS

## MOUNTING OPTIONS

- Surface Mount
- Consult factory for pendant mount or any other mounting requirements.
- Mounting holes must be field drilled and siliconed covered.
- Drain holes must be field drilled at lowest point of fixture.
- 2' Fixture requires off center service hole due to 12" driver.
- Narrow housing will not cover recessed J Box. Whip feed recommended. Use optional "JBP" canopy plate for J-Box mount.



**J-BOX PLATE**  
**JBP** 5" FLAT CANOPY PLATE  
TO COVER J-BOX

## SENSOR OPTIONS

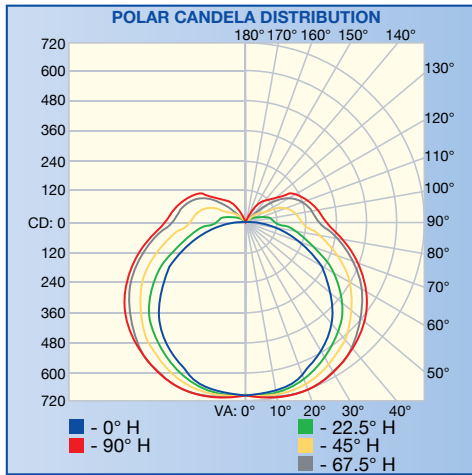


- MOTION SENSOR**
- MS** MOTION SENSOR
  - MSP** PROGRAMMABLE BI-LEVEL  
(MOTION/LIGHT SENSOR  
MOUNTS UNDER LENS  
ADDS 3" TO FIXTURE LENGTH)

## FIXTURE LENGTHS

NOMINAL LENGTH	2'	3'	4'	5'	6'	7'	8'	9'	10'	11'	12'
ACTUAL LENGTH	26"	35"	50"	57"	74"	90"	98"	112"	122"	134"	146"

PHOTOMETRICS / CANDELA DISTRIBUTION .IES files available online or by calling the factory.

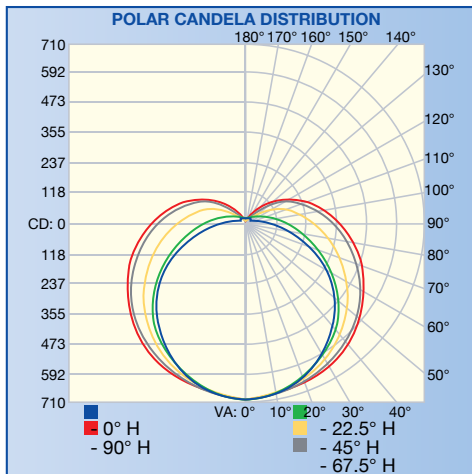


**EL2 – SQL – LED 2" SQUARE LENS**

**POLAR GRAPH**

REPORT NO.: 103499092LAX-001

Based on 4' linear fixture at medium lumens (35K 903L/FT x 4'= 3612L)

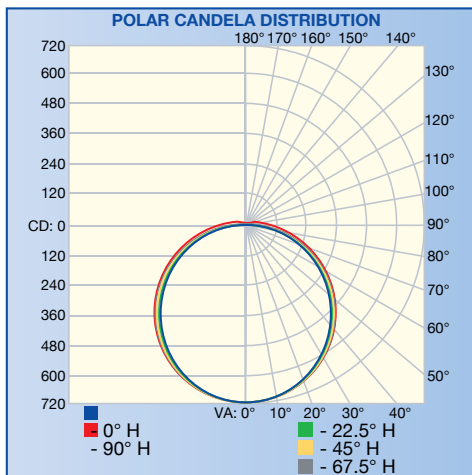


**EL2 – RLR – LED 2" ROUND LENS**

**POLAR GRAPH**

REPORT NO.: 103499092LAX-002

Based on 4' linear fixture at medium lumens (35K 903L/FT x 4'= 3612L)



**EL2 – FL – LED 2" FLAT ROUND LENS**

**POLAR GRAPH**

REPORT NO.: 103499092LAX-003

Based on 4' linear fixture at medium lumens (35K 903L/FT x 4'= 3612L)