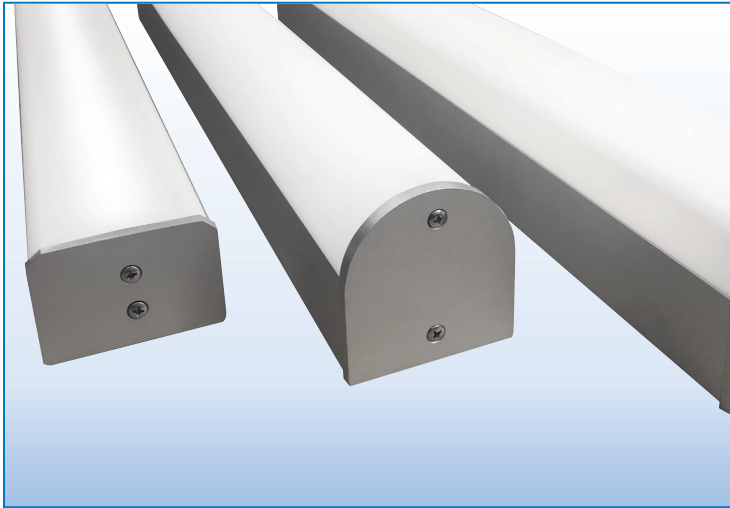
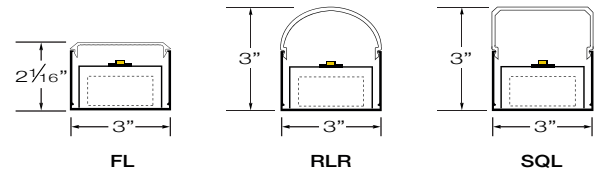


LED WET LOCATION



| |
|----------|
| PROJECT: |
| TYPE: |



SPECIFICATIONS

| | |
|----------------------|---|
| HOUSING | 3" Wide extruded aluminum housing up to 12' long. Continuous runs available. |
| FINISH | Satin anodized or white paint finish standard. Custom finish optional. |
| LENS | 3 Options extruded DR acrylic, snap-on frosted widespread lens. See page 2 for details. |
| LED DRIVER | Integral, universal voltage; 0-10V dimming standard; 1% or 10% dimming. |
| MOUNTING | SURFACE MOUNT: See page 2 for details and options. |
| LED's | (LED boards) 50,000 hours. (L70), 80 CRI, 2700K, 3000K, 3500K and 4000K. |
| CERTIFICATION | ETL/CSA listed for wet locations. 2001431 MADE IN THE USA |

LED COLOR & LUMEN OPTIONS

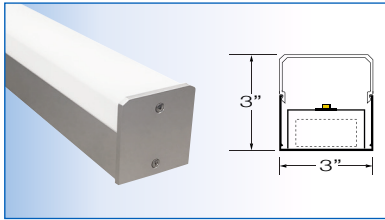
| 4' – 24" BOARDS | | LUMENS PER FOOT – WATTS PER FOOT – LUMENS PER WATT | | | | | | | | |
|-----------------|-----|--|----------|---------|----------|----------|---------|-----------|----------|---------|
| LED COLOR | CRI | LOW | | | MEDIUM | | | HIGH | | |
| WHITE 2700K | 80 | 500 L/FT | 3.5 W/FT | 136 L/W | 870 L/FT | 6.5 W/FT | 130 L/W | 1160 L/FT | 9.0 W/FT | 127 L/W |
| WHITE 3000K | 80 | 530 L/FT | 3.5 W/FT | 144 L/W | 915 L/FT | 6.5 W/FT | 137 L/W | 1220 L/FT | 9.0 W/FT | 133 L/W |
| WHITE 3500K | 80 | 535 L/FT | 3.5 W/FT | 144 L/W | 920 L/FT | 6.5 W/FT | 137 L/W | 1225 L/FT | 9.0 W/FT | 133 L/W |
| WHITE 4000K | 80 | 560 L/FT | 3.5 W/FT | 151 L/W | 970 L/FT | 6.5 W/FT | 145 L/W | 1290 L/FT | 9.0 W/FT | 140 L/W |

Higher lumen packages available.

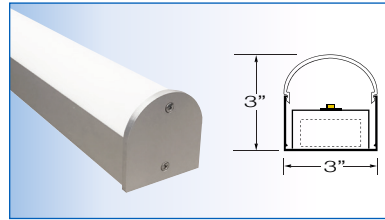
PART NUMBER

| SERIES | LUMENS | COLOR | VOLTS | FEED | OPTIONS | FINISH | LENGTH |
|-------------|---|-----------|-----------------------------|--|----------------------------------|----------|--------|
| EL3-SQL-LED | L LOW | 27K 2700K | UNV1 (120/277) 1% DIM | EF END FEED | MS MOTION SENSOR | S SATIN | 2' 8" |
| EL3-RLR-LED | M MEDIUM | 3K 3000K | | FD FIELD DRILL | MSP BI-LEVEL MOTION SENSOR | W WHITE | 3' 9" |
| EL3-FL-LED | H HIGH | 35K 3500K | UNV (120/277) 10% DIM | CR CONTINUOUS RUNS | JBP J BOX PLATE | C CUSTOM | 4' 10" |
| | CP CUSTOM PROGRAMMED (Specify Lumens/FT or Watts/FT) | 4K 4000K | | CONSULT FACTORY FOR CONTINUOUS RUNS FEED | | | 5' 11" |
| | | | | | | | 6' 12" |
| | | | | | | | 7' |

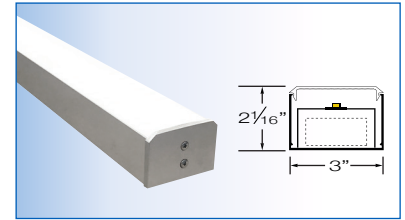
LENS OPTIONS



EL3 – SQL – LED
SQUARE LENS

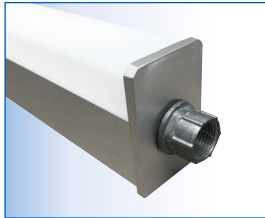


EL3 – RLR – LED
ROUND LENS

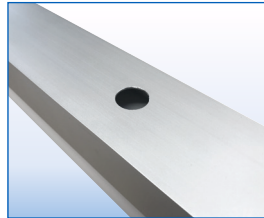


EL3 – FL – LED
FLAT LENS

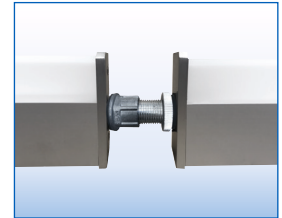
FEED OPTIONS



EF – END FEED
1/2" END FEED CONNECTOR
(INCLUDED)



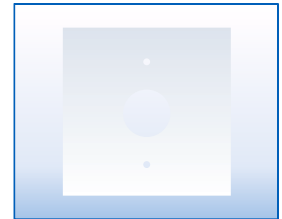
FD – FIELD DRILL
ONLY ON BACK OF HOUSING



CR – CONTINUOUS RUNS
AVAILABLE. CONSULT
FACTORY FOR DETAILS

MOUNTING OPTIONS

- Surface Mount
- Consult factory for pendant mount or any other mounting requirements.
- Mounting holes must be field drilled and siliconed covered.
- Drain holes must be field drilled at lowest point of fixture.
- 2' Fixture requires off center service hole due to 12" driver.
- Narrow housing will not cover recessed J Box. Whip feed recommended. Use optional "JBP" canopy plate for J-Box mount.



J-BOX PLATE
JBP 5" FLAT CANOPY PLATE
TO COVER J-BOX

SENSOR OPTIONS

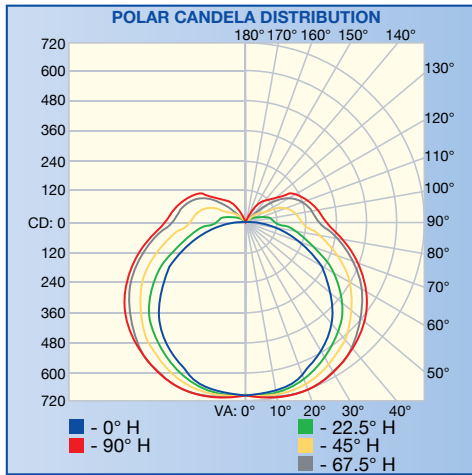


- MOTION SENSOR**
- MS** MOTION SENSOR
 - MSP** PROGRAMMABLE BI-LEVEL
(MOTION/LIGHT SENSOR
MOUNTS UNDER LENS
ADDS 3" TO FIXTURE LENGTH)

FIXTURE LENGTHS

| NOMINAL LENGTH | 2' | 3' | 4' | 5' | 6' | 7' | 8' | 9' | 10' | 11' | 12' |
|----------------|-----|-----|-----|-----|-----|-----|-----|------|------|------|------|
| ACTUAL LENGTH | 26" | 35" | 50" | 57" | 74" | 90" | 98" | 112" | 122" | 134" | 146" |

PHOTOMETRICS / CANDELA DISTRIBUTION .IES files available online or by calling the factory.

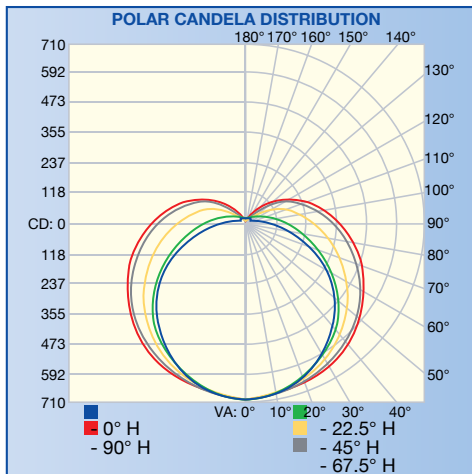


EL3 – SQL – LED 3" SQUARE LENS

POLAR GRAPH

REPORT NO.: 103499092LAX-001

Based on 4' linear fixture at medium lumens (35K 903L/FT x 4' = 3612L)

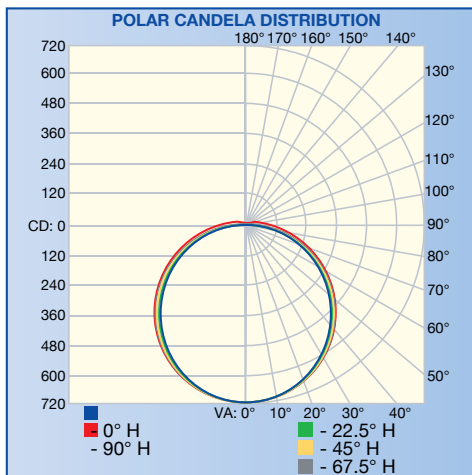


EL3 – RLR – LED 3" ROUND LENS

POLAR GRAPH

REPORT NO.: 103499092LAX-002

Based on 4' linear fixture at medium lumens (35K 903L/FT x 4' = 3612L)



EL3 – FL – LED 3" FLAT LENS

POLAR GRAPH

REPORT NO.: 103499092LAX-003

Based on 4' linear fixture at medium lumens (35K 903L/FT x 4' = 3612L)