



PRODUCT SPECIFICATION

The CRN series is designed for use in all levels of security facilities and high abuse applications.

Mounting

Mounts recessed in metal pan or gypsum ceiling with swing brackets that extend and clamp with a single screw action.

Housing

18 gauge die-formed cold rolled steel with seams welded and ground smooth.

Door

One-piece die-formed cold rolled steel overlapping door with 14 gauge lens retainers. Freedom Hinge™ design permits removal and hinging from either side. Stainless steel available.

Finish

Polyester powder-coated after phosphate pretreatment for superior adhesion and corrosion resistance. Brushed stainless steel door available.

Hardware

Recessed, stainless steel, tamper-proof fasteners.

Wiring

Access plate with two .875 in. diameter knockouts.

Certifications

UL Listed damp or wet location.
Wet location option is IP65 rated.

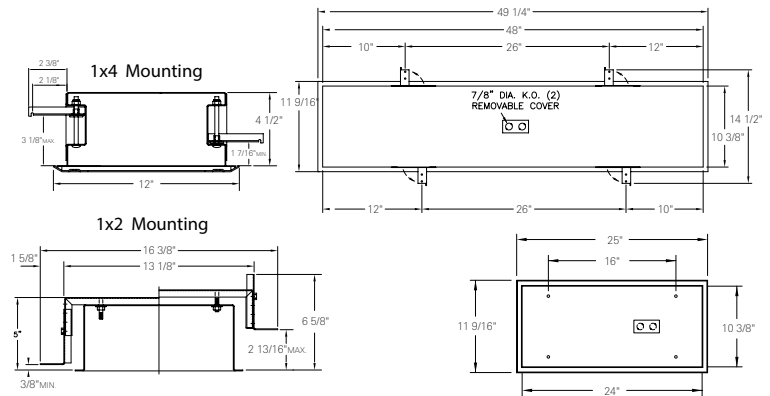
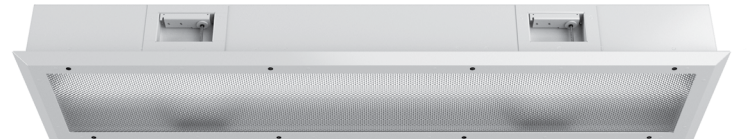
Job Name _____

Fixture Type _____

Catalog No. _____

Approval _____

Date _____



RECOMMENDED CEILING CUTOUT = 10 5/8" x 24 1/4"



one two three four five six seven eight nine ten eleven twelve

CRN

one Lamps (not included)

14	2 ft. 14 W T5
17	2 ft. 17 W T8
24	2 ft. 24 W T5 HO
4B	2 ft. 40 W T5 RS biax
28	4 ft. 28 W T5
32	4 ft. 32 W T8
54	4 ft. 54 W T5 HO

two Lamp Quantity

1	one
2	two
3	three

three Door Gauge

N	18 gauge, minimum security
D	16 gauge, medium security
X	14 gauge, maximum security
U	12 gauge, super max, <u>CRS only</u>

four Door Material

C	Cold rolled steel
S	Stainless steel

five Finish

R	Brushed stainless steel
W	White

six Voltage

120	120 V, 60 Hz
277	277 V, 60 Hz
347	347 V, 60 Hz
VAR	Variable, 120-277 V, 50/60Hz

seven Ballast

DM	Dimming
EL	Electronic Instant Start, <u>std T8</u>
PR	Program Rapid Start, <u>std T5, option T8</u>

eight Internal Lens

53	.125 in. K12 prismatic acrylic
12	.125 in. K12 prismatic polycarbonate
15	.156 in. K12 prismatic polycarbonate
16	.187 in. K12 prismatic polycarbonate
75	.156 in. C73 prismatic tempered glass
01	.005 in. UV absorbing overlay

nine External Lens

30	.187 in. clear polycarbonate
32	.250 in. clear polycarbonate
36	.375 in. clear polycarbonate
38	.500 in. clear polycarbonate
90	.187 in. clear tempered glass
92	.250 in. clear tempered glass
96	.375 in. clear tempered glass

ten Door Fasteners

AP	Stainless steel allen head with pin
TP	Stainless steel torx head with pin
PH	Phillips, non-security

eleven UL Listing

D	Damp Location
W	Wet Location

twelve Options

2C	Two-circuit wired
CU	Canadian UL Listing
E1	One lamp emergency ballast
E2	Two lamp emergency ballast
FH	Fuse and holder
NL	Night light, for 7 or 9 W PL bipin
NL-LED	Night light, LED
IMS	Integral Occ Sensor
PF	Plaster frame

Contact factory for 14 and 16 gauge CRS and SS housings

Modifications are available to meet custom requirements.