



RXR-LED Red

Cleanroom **LED** Grid / Flange 15/16 to 1.5 in. T Grid

PRODUCT SPECIFICATION

For use in cleanroom vivarium applications.

Mounting

Suitable for installation in recessed 15/16"-1.5" T-Grid or hard ceiling applications. Hard ceiling (flange) type mounts via swing arm brackets that extend and clamp with a single screw action. Swing arm bracket also serves as connection for earthquake cables.

Housing

18 gauge cold rolled steel die-formed to shape with seams welded, ground smooth, and caulked airtight. Aluminum and 304 stainless steel available.

Door

One-piece 18 gauge cold rolled steel, gasketed and sealed overlapping door. Freedom Hinge™ design permits removal and hinging from either side. Aluminum and 304 stainless steel available.

Lens

Optic Plus lens (standard) completely hides diode image while providing greater than 90% light transmission.

Finish

Polyester powder-coated after phosphate pretreatment for superior adhesion and corrosion resistance. Brushed stainless steel available.

Hardware

Recessed stainless steel fasteners

Driver

0-10Vdc 1% dimming, >0.9 PF, <20% THD
Factory programmable, Operating temp -40°C Min. to 50°C Max

Wiring

Driver provided with pre-wired 3-wire self-aligning input power quick disconnect and 2-wire quick disconnect to LED module.

Certifications

UL Listed wet location. IC, IP66, and NEMA4 / 4X Rated.
Suitable for use in ISO-3 clean rooms (209E Class 1).
USP 797 and USP 800 compliant.

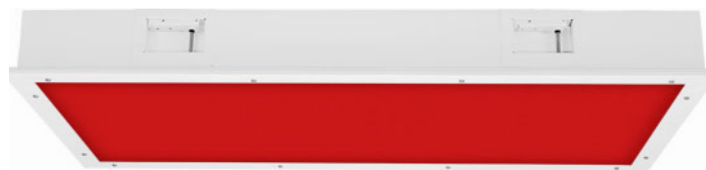
Job Name

Fixture Type

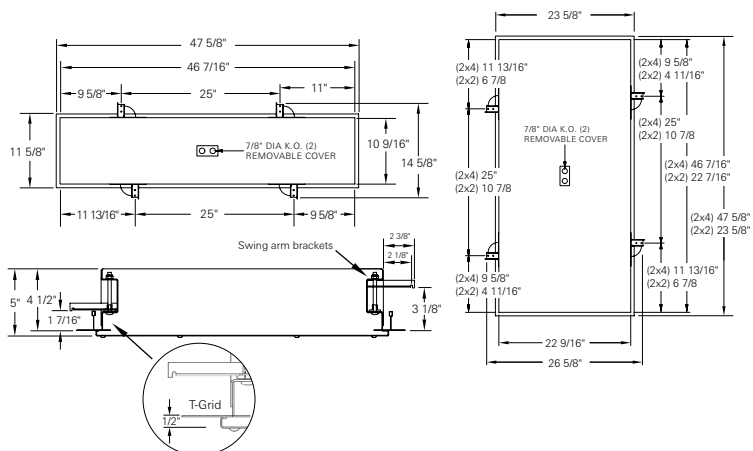
Catalog No.

Approval

Date



Ceiling Grid / Flange Design



one	two	three	four	five	six	seven	eight	nine	ten	eleven
RXR	-	-	/	-	-	VAR	DM	-	-	-

one Luminaire Size

14	1 x 4, <u>three rows max</u>
22	2 x 2
24	2 x 4

two LED Source

Refer to the LED Source Table on Page 2 for available options.

three Color Temperature

30	3000K
35	3500K
40	4000K
50	5000K

Leave blank for RED-LED only.

four CRI

80	80 CRI
90	90 CRI

five Door Material

A	Aluminum
C	Cold rolled steel, <u>standard</u>
S	304 Stainless steel

six Door Finish

R	Brushed (Stainless steel only)
W	White, <u>standard</u>

seven Voltage

VAR	Variable, 120-277 V, 50/60Hz
-----	------------------------------

eight Driver

DM	0-10VDC Dimming
----	-----------------

nine Internal Lens

122	Optic Plus LED diffusing acrylic, <u>standard</u>
122R	Optic Plus with RF grid, <u>Must be used with RF filter*</u>
130	.125 in. LED diffusing Lexan

ten External Lens

00	No external lens
33	.125 in. clear polycarbonate

eleven Options

2C	Two circuit wired
AM	Anti-microbial coating (exposed areas)
CU	Canadian UL Listing
CP	CCEA Chicago
EM	Emergency battery backup
FH	Fuse and holder
IMS	Integral Occ Sensor
NL-LED	Night light, LED
PF	Plaster frame
RF	Radio interference filter, one per circuit*
TP	Stainless steel torx head fasteners

Housing Material

AH	Aluminum
SH	304 Stainless steel

Modifications are available to meet custom requirements.
Specifications and dimensions are subject to change without notice.

Red/White LED (Each color on a dedicated circuit.)

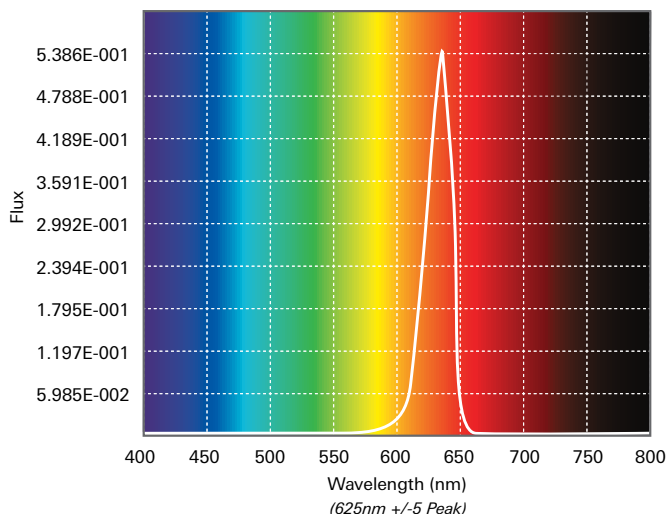
CRI	LED Life
>80	>100,000

LED Source (Box 2)	Red		3000K		3500K		4000K		5000K		Input Watts
	Delivered Lumens	Watts	Delivered Lumens	L/W	Delivered Lumens	L/W	Delivered Lumens	L/W	Delivered Lumens	L/W	
1' x 4' Fixture											
1R/1W55	1153	22	5160	126	5237	128	5391	131	5545	135	41.0
1R/2W75	1153	22	7543	126	7656	128	7881	132	8106	136	59.8
2' x 2' Fixture											
2R/2W55	1153	22	5212	127	5290	129	5445	133	5601	137	41.0
2R/2W70	1153	22	6681	122	6781	124	6980	127	7179	131	54.8
2' x 4' Fixture											
1R/2W55	1153	22	5617	141	5701	143	5869	147	6037	152	39.8
1R/2W90	1153	22	8953	132	9087	134	9354	138	9621	142	67.6
1R/2W120	1153	22	11754	131	11930	133	12281	137	12631	141	89.8
2R/2W55	2306	44	5617	141	5701	143	5869	147	6037	152	39.8
2R/2W90	2306	44	8953	132	9087	134	9354	138	9621	142	67.6
2R/2W120	2306	44	11754	131	11930	133	12281	137	12631	141	89.8

Red LED Only

LED Source (Box 2)	Size	Delivered Lumens	Watts
1R	1' x 4'	1153	22
2R	2' x 2'	1153	22
2R	2' x 4'	2306	44

Red Spectrum



Specified Output Option

LC Doane programmable drivers allows us to deliver a specific lumen output. If none of the options in the chart above fit your application, let us know the desired lumen output and we will do the rest. See the example for a 2x4 on how this will be specified:

Example Model:

RXR24-1RXX¹SO-40/80-CW-VARDM-122/00-(XX²/LUMENS)

LUMENS = You provide the lumens.

XX¹ = We will determine the number of rows.

XX² = We will provide the wattage information.

Photometric Data @ 80 CRI with 122 lens

Use the multipliers below to adjust the delivered lumens

33 lens multiplier	.86
90 CRI multiplier	.83