

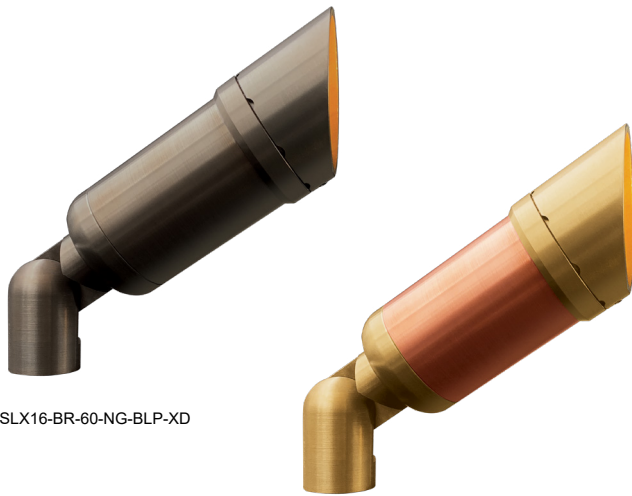


SLX16 MARINER

The Mariner **SLX16 Mariner** accent light is the fixture that started it all; it is the longest production luminaire in our product line. Continual upgrades over its 25 year history ensure the Mariner is always at the top of its game. The SLX16 Features a thermally conductive Copper Core that reduces internal temperature, ensuring peak performance and increased lamp life when using LED lamps. Our Storm Drain™ lens drainage system prevents water and dirt build-up for maximum light output. The SLX16 is among our most versatile luminaires, ideal for illuminating towering palms, broad trees, or low growing shrubs. As always, aggressively priced, Made in the USA, and a Lifetime Warranty, the Mariner SLX16 is unsurpassed.

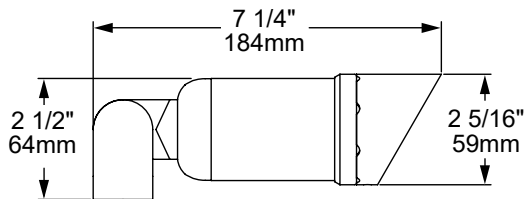
Features include:

- Variety of MR16 Lamp Options
- 2700K (90 CRI), 3000K (90 CRI), or Turtle Safe Amber (560nm)
- 3 Glare Shield Options
- Storm Drain™ Lens Drainage System
- Aurora Mount System (AMS™) Compatible
- Solid Brass Construction

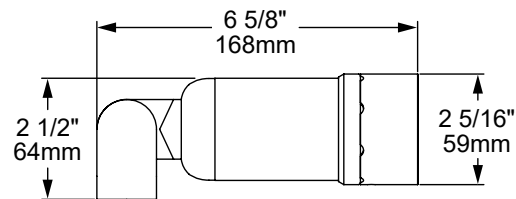


SLX16-BR-60-NG-BLP-XD

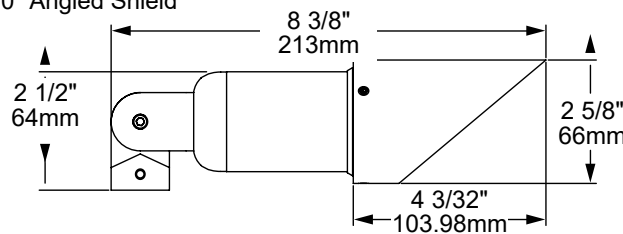
SLX16-BR-60-NG-NAT



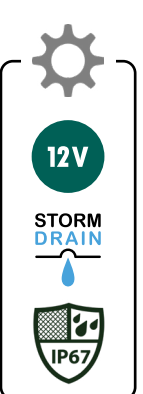
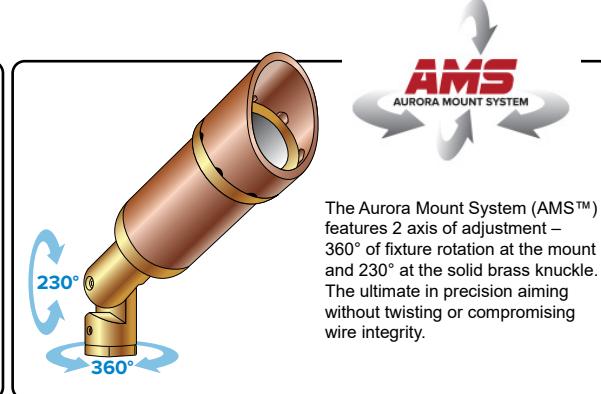
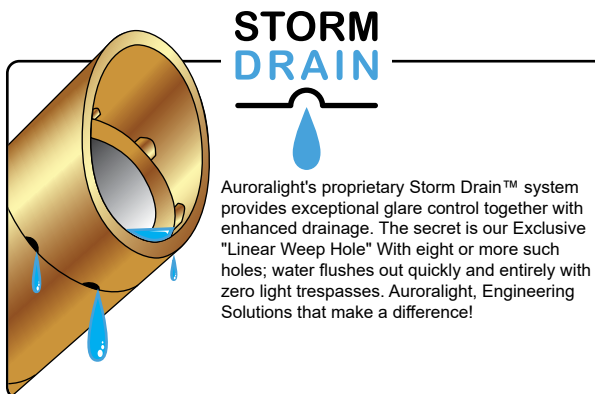
[60] 60° Angled Shield



[90] 90° Straight Shield



[L40] Long 40° Angled Shield



SEE NEXT PAGE FOR ORDERING INFORMATION

SLX16 MARINER



ORDERING GUIDE: **SLX16** ^{Prefix} SL (SPOTLIGHT) X (NO LAMP) 16 (SERIES)

□ INDICATES REQUIRED FIELD □ INDICATES OPTIONAL FIELD ✓ INCLUDED IN BASE PRICE [_] QUICK SPEC (See Below)

QUICK SPEC SKU **SLX16-60-NG-7-W-27-H-AGS-NAT**

SLX16	SHIELD	BODY	WATTAGE	OPTIC	LED COLOR	ACCESSORIES
	STANDARD: ✓ [60] Brass, 60° Angled [90] Brass, 90° Straight PLUS (\$): [L40] Copper, Long 40° Angled	✓ [G] Grooves [NG] No Grooves	[3] 3 Watts [5] 5 Watts [7] 7 Watts	[N] 15° Narrow [M] 24° Medium [W] 36° Wide [WF] 60° Wide Flood [SF] 120° Super Flood	[27] 2700K, 92 CRI [30] 3000K, 92 CRI	SELECT UP TO TWO (3/16" each) [H] Hex Baffle [L] Linear Spread* [P] Prismatic Lens* [F] Frosted Lens* [MP] Micro Prismatic* [AR] Accessory Retainer (Optional)

For Turtlesafe Amber specify [3] [WF] [AMB]

* Limit ONE when AR is selected

RISER	MOUNT	FINISH
EXTENDABLE (EXTR): [5X10] 5x10" [7X14] 7x14" [9X18] 9x18" [11X22] 11x22" [18X36] 18x36" SUBTERRANEAN (EXTENDABLE): [STR-12] 12" above grade 13 1/2" below [STR-18] 18" above grade 19 1/2" below FIXED: [FR-4] 4" [FR-8] 8" [FR-12] 12" [FR-16] 16" [FR-18] 18" 90° & TEE OPTIONS: Add -90 (for 90°) or -T (for Tee) to any of the riser part numbers above.	NO MOUNT: [1/2] 1/2" (NPS) Universal Thread ✓ GROUND: [AGS] AMS Ground Stake [2GS] Ground Stake w/ 2" Cap [3GS] Ground Stake w/ 3" Cap [325GS] Ground Stake w/ 3 1/4" Cap [DS] 9" Deluxe Spike [TR-12] 12" Trident Spike [JB3-S] 3" Junction Box w/ PVC Stake [PB-S] Power Box w/ PVC Stake Incl. w/ 60W 120-12V Trans. [PM-60-1] Concrete Pedestal Mount w/ 60W 120-12V Trans. (Single Hole/One Fixture) [PM-60-2] Concrete Pedestal Mount w/ 60W 120-12V Trans. (Double Hole/Two Fixtures) TREE: [TS-HD-36] 36" AMS Tree Strap - Heavy Duty [BTM] Bolt-On Tree Mount [STM] Screw-In Tree Mount	STANDARD: [NAT] Natural ✓ PLUS (\$): [BLP] Bronze Living Patina [BLP-XD] BLP Extra Dark PREMIUM (\$\$\$): [NI] Nickel PVD [PVD] PVD Color (Contact Factory for Color Options)

SURFACE:

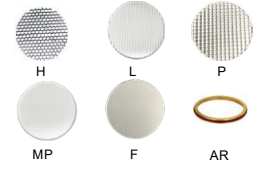
[SMJB-1-5] Surface Mount J-Box (Single Hole/One Fixture) w/ 5 KO
[SMJB-2-5] Surface Mount J-Box (Double Hole/Two Fixtures) w/ 5 KO
[SM2] 2" Surface Mount
[SM3] 3" Surface Mount
[TM] AMS Trellis Mount
[SB] AMS Splice Box

COVER PLATE:

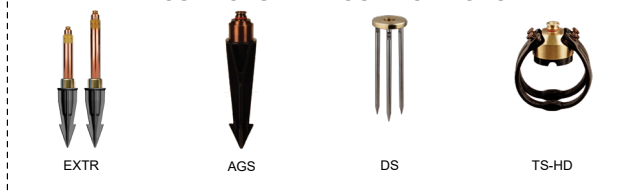
[CP35-BR] 3 1/2" Brass Cover Plate
[CP14] 4" AMS J-Box Cover Plate
[CP4-BR] 4" Brass Cover Plate
[CP45-BR] 4 1/2" Brass Cover Plate
[MC45-1] 4 1/2" Mount Canopy (Single Hole/One Fixture)
[MC45-2] 4 1/2" Mount Canopy (Double Hole/Two Fixtures)
[PC-60-1] 4 1/2" Power Canopy Incl. w/ 60W 120-12V Trans. (Single Hole/One Fixture)
[PC-60-2] 4 1/2" Power Canopy Incl. w/ 60W 120-12V Trans. (Double Hole/Two Fixtures)

NOTE: Universal adapter included w/ fixture, except where AMS is noted. Most common configurations listed above; See Mount/Riser spec sheets for all options.

ACCESSORIES



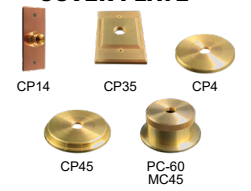
MOST POPULAR MOUNT OPTIONS



GROUND



COVER PLATE



EXTENDABLE



SUBTERRANEAN (EXTENDABLE)



FIXED



SURFACE



TREE

