

# RECESSED

components

specifications  
LED Wireless Controls



Project: .....

Type: .....

Catalog number: .....

## Vive Enabled - Individual Fixture Controls

**V010** - Atlantic wireless control option for use with standard 0-10V driver using Lutron FCJS-010 Vive PowPak® wireless controller.

**VECO** - Atlantic wireless control option for use with Lutron LDE EcoSystem driver using Lutron FCJS-ECO Vive PowPak® wireless controller.

### Vive PowPak® Individual Fixture Controls

- The PowPak® wireless fixture control is a radio-frequency (RF) device that controls 0-10V drivers or EcoSystem drivers. With the “Individual Fixture” version, one PowPak® unit is mounted to each fixture for individual fixture control.
- Uses RF input from Pico® remote controls, Radio Powr Savr™ wireless sensors or wired inputs from the PowPak® fixture sensor.



**V010**  
(FCJS-010)  
shown above

### Suggested applications

- Great for individual control of cubicles.
- Maximize energy savings (fixtures in unoccupied spaces do not turn on)

### Settings

- Low-end trim adjustment
- High-end trim adjustment
- Minimum light level setting (optional)
- Daylighting dims lights down to OFF
- Occupied light level can be changed via the Radio Powr Savr™ occupancy sensor
- Favorite light level can be set using Pico® remote control
- Power failure memory: If power is interrupted, connected loads will return to the previous level prior to interruption



ATLANTIC  
LIGHTING

T: 508 678-5411 | F: 508 678-5408 [www.atlantic-lighting.com](http://www.atlantic-lighting.com)

Page 1

011121 CS21-002

# RECESSED

components

specifications  
LED Wireless Controls



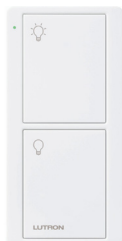
Project: .....

Type: .....

Catalog number: .....

## Pico® Remote Controls

The following can be used per each PowPak® wireless fixture control:



**On/Off**  
(PJ2-2B-GXX-L01)



**Dimming**  
(PJ2-3BRL-GXX-L01)



**4-Button Zone Control**  
(PJ2-4B-GXX-L01)



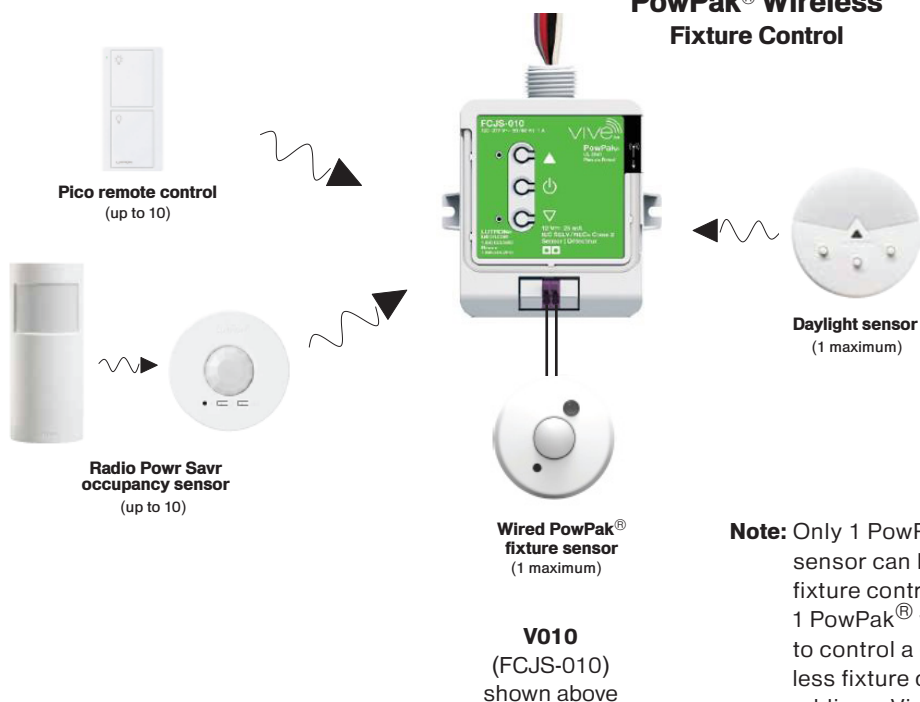
**Wallplate + adapter**  
(CW-1-XX)  
(PICO-WBX-ADAPT)  
(PICO-347WBX-ADAP)



**Tabletop pedestal**  
(L-PEDX-XX)

## Sensors

### Wired & Wireless:



**Note:** Only 1 PowPak® wireless fixture sensor can be wired per PowPak® fixture control. Grouping more than 1 PowPak® wireless fixture sensor to control a group of PowPak® wireless fixture controls requires adding a Vive hub.

# RECESSED

specifications  
LED Wireless Controls



components



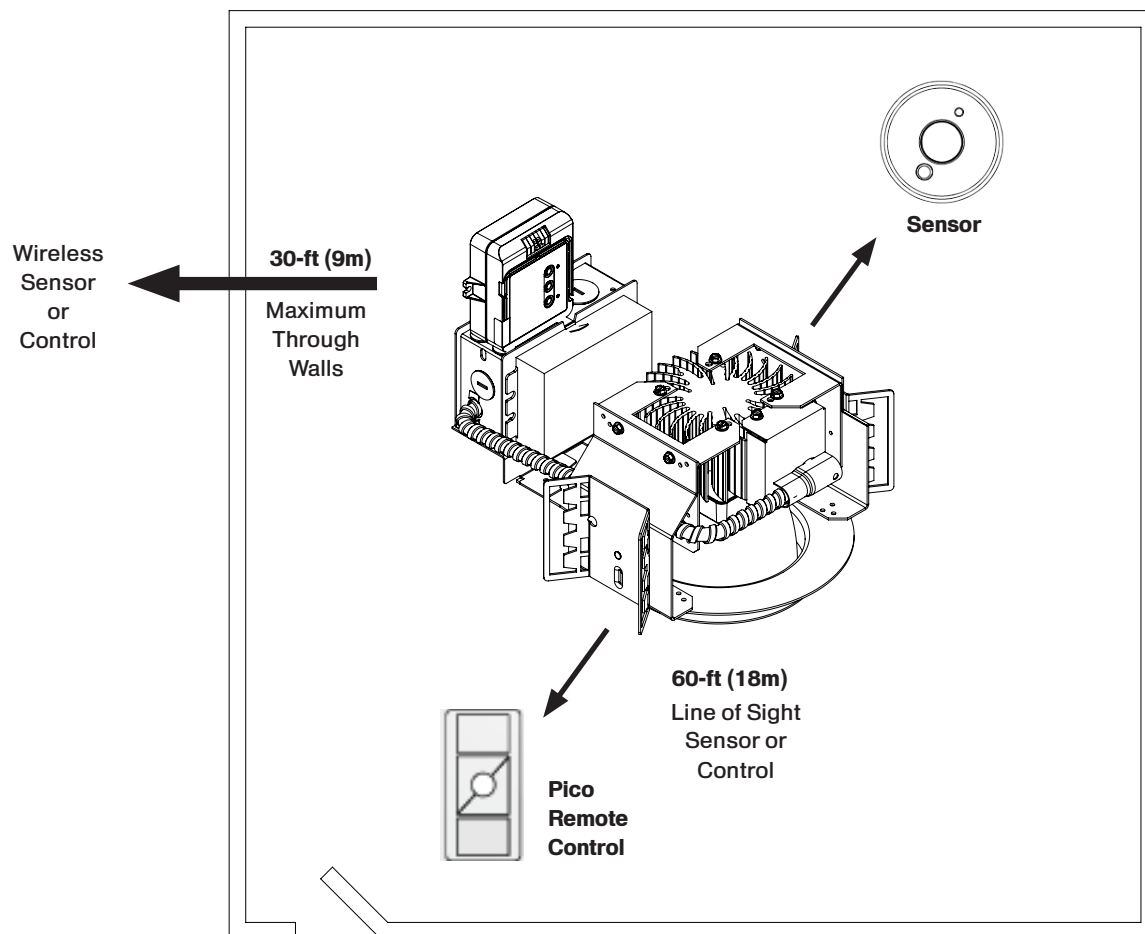
Project:

Type:

Catalog number:

## Range Diagrams

### PowPak® Wireless Fixture Control



Wireless sensors and controls must be located within 60-ft (18m) line of sight, or 30-ft (9m), through walls, of the associated control module.

## specifications

### LED Wireless Controls



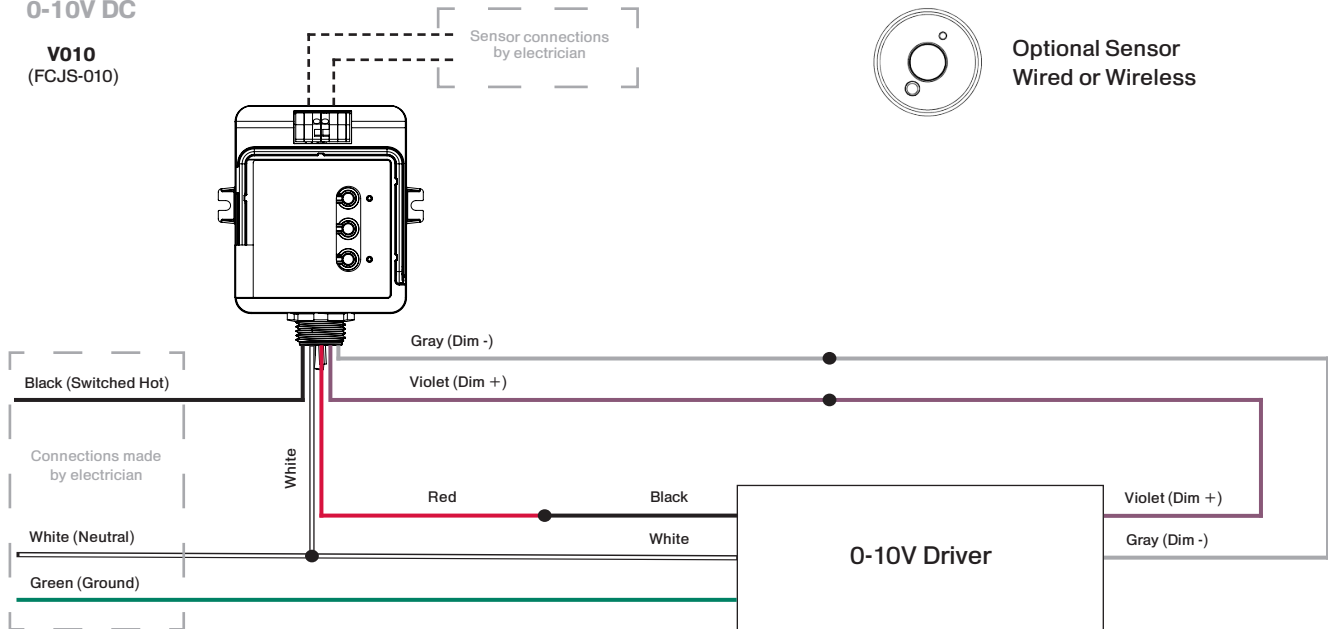
## WARNING - DO NOT WIRE HOT

## Wiring/System Diagram

0-10V DC

**V010**  
(FCJS-010)

Sensor connections  
by electrician

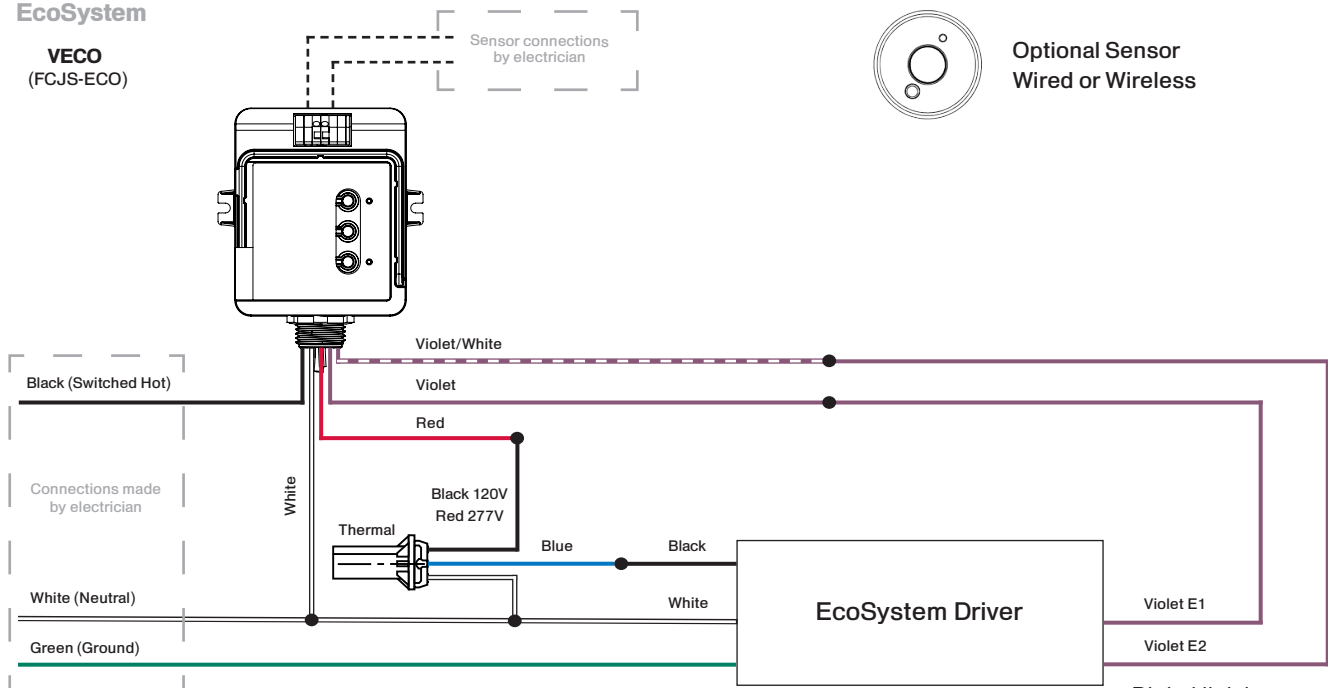


Optional Sensor  
Wired or Wireless

## EcoSystem

**VECO**  
(FCJS-ECO)

Sensor connections  
by electrician



Optional Sensor  
Wired or Wireless

Digital link is polarity free



**ATLANTIC**  
LIGHTING

T: 508 678-5411 | F: 508 678-5408 [www.atlantic-lighting.com](http://www.atlantic-lighting.com)