

RECESSED

components

specifications LED Wireless Controls



Project:

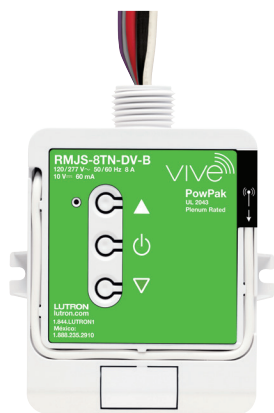
Type:

Catalog number:

Vive Enabled - Zone Fixture Controls

VZ010 - Atlantic wireless control option for use with standard 0-10V driver using Lutron RMJS-8TN-DV-B Vive PowPak® wireless controller.

VZECO - Atlantic wireless control option for use with Lutron LDE EcoSystem driver using Lutron RMJ-ECO32-SZ Vive PowPak® wireless controller.



VRMG
(RMJS-8TN-DV-B)
shown above

Vive PowPak® Group Fixture Controls

- The PowPak® wireless fixture control is a radio-frequency (RF) device that controls 0-10V LED drivers or EcoSystem drivers. With the “Zone” version, one PowPak® unit is mounted to a primary fixture and through the 0-10V or EcoSystem dimming leads can control small groups of fixtures as a single zone.
- Uses RF input from Pico® remote controls, Radio Powr Savr™ wireless sensors.
- The Radio Powr Savr™ daylight sensor will affect all connected LED drivers equally.
- Vacancy events (area becomes unoccupied) turn all driver models off or to minimum light level.

Suggested applications

- Great for zone control of small areas (e.g., classrooms, conference rooms, or private offices).
- Maximize energy savings (fixtures in unoccupied spaces do not turn on)

Settings

- Switches up to 8A total zone controlled fixtures
- Controls up to 32 Lutron EcoSystem drivers
- Low-end trim adjustment
- High-end trim adjustment
- Minimum light level setting (optional)
- Daylighting dims lights down to OFF
- Occupied light level can be changed via the Radio Powr Savr™ occupancy sensor
- Favorite light level can be set using Pico® remote control
- Power failure memory: If power is interrupted, connected loads will return to the previous level prior to interruption



ATLANTIC
LIGHTING

T: 508 678-5411 | F: 508 678-5408 www.atlantic-lighting.com

RECESSED

components

specifications
LED Wireless Controls



Project:

Type:

Catalog number:

Pico® Remote Controls

The following can be used per each PowPak® wireless fixture control:



On/Off
(PJ2-2B-GXX-L01)



Dimming
(PJ2-3BRL-GXX-L01)



4-Button Zone Control
(PJ2-4B-GXX-L01)



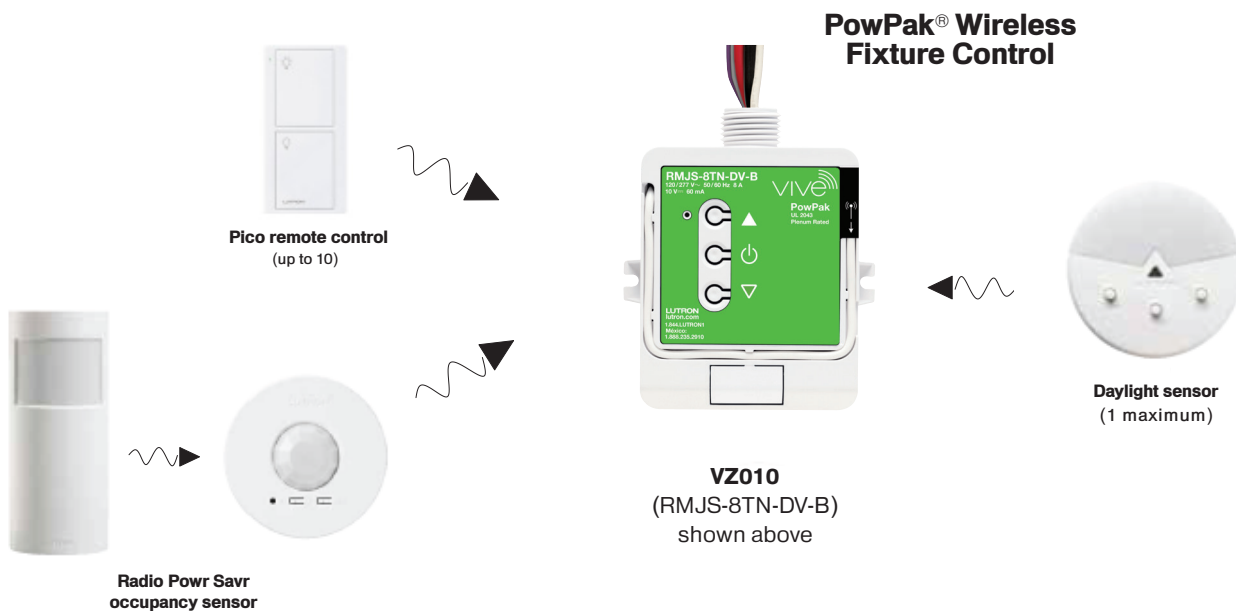
Wallplate + adapter
(CW-1-XX)
(PICO-WBX-ADAPT)
(PICO-347WBX-ADAP)



Tabletop pedestal
(L-PEDX-XX)

Sensors

Wireless Lighting Control:



ATLANTIC
LIGHTING

T: 508 678-5411 | F: 508 678-5408 www.atlantic-lighting.com

RECESSED

components

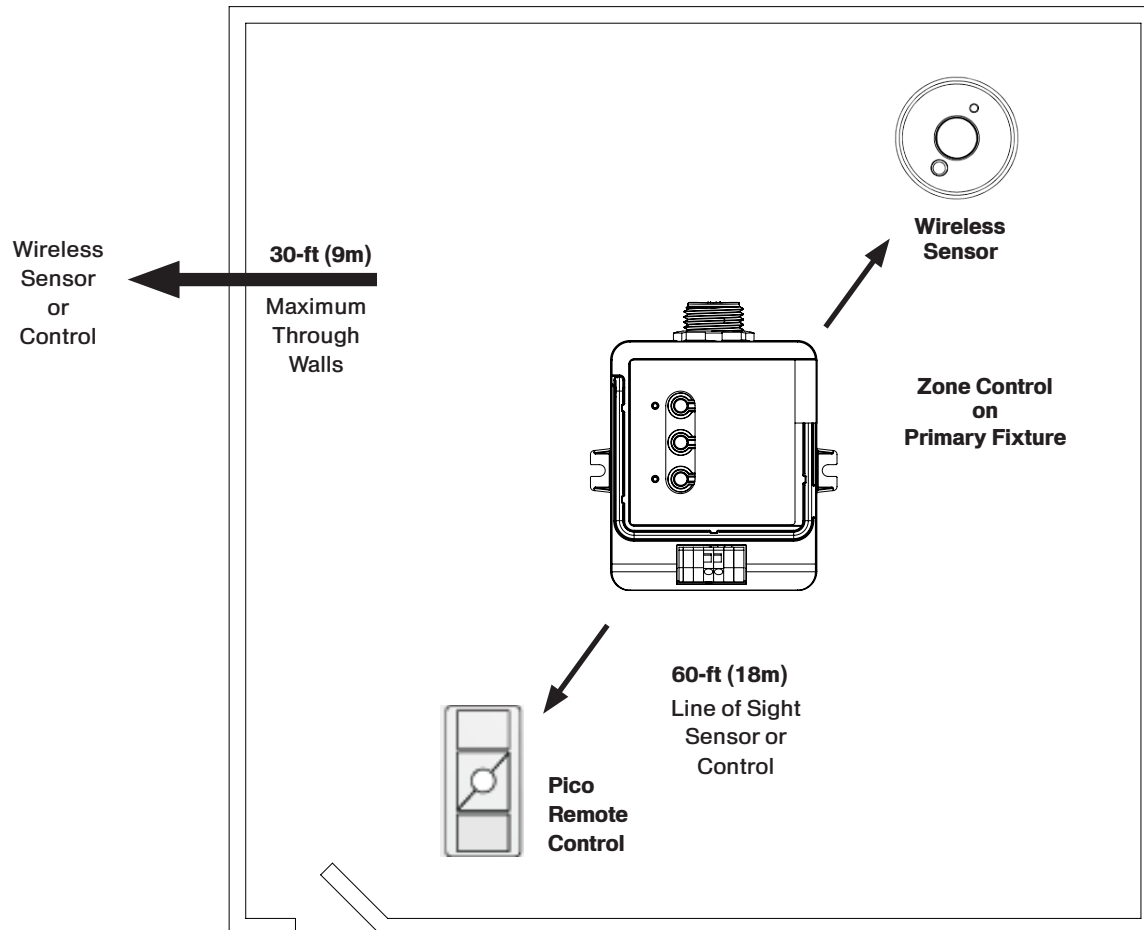
specifications
LED Wireless Controls



Project: _____
Type: _____
Catalog number: _____

Range Diagram

PowPak® Wireless Zone Control VZ010 or VZECO



Wireless sensors and controls must be located within 60-ft (18m) line of sight, or 30-ft (9m), through walls, of the associated control module.

RECESSED

components

specifications
LED Wireless Controls



Project: _____
Type: _____
Catalog number: _____

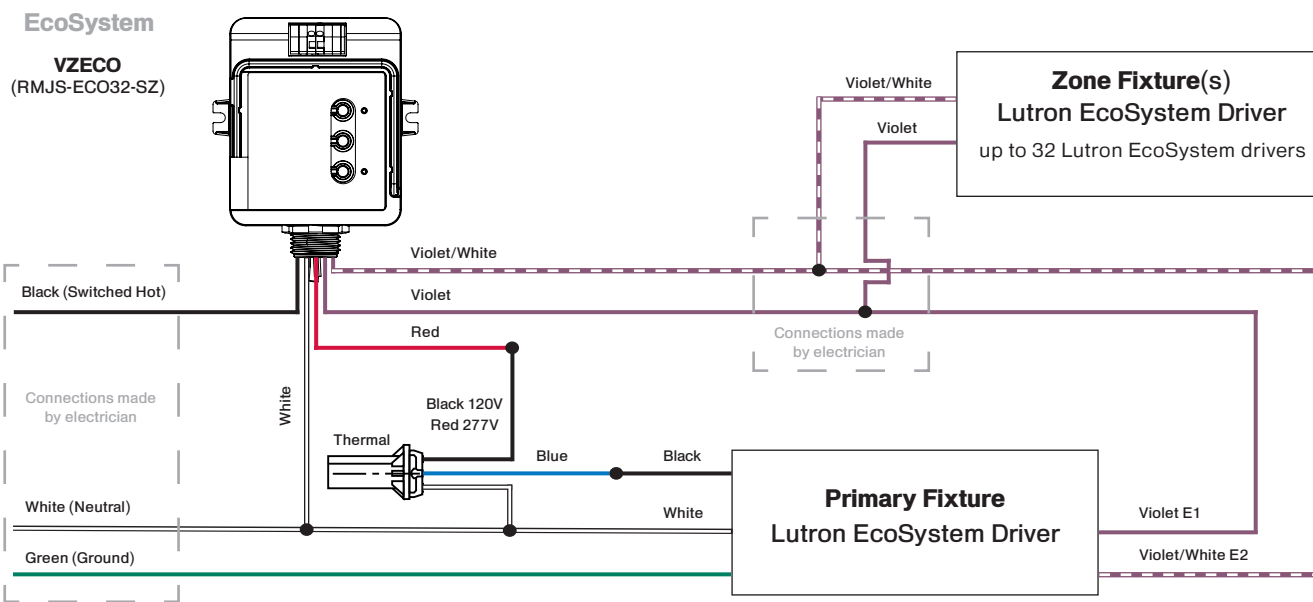
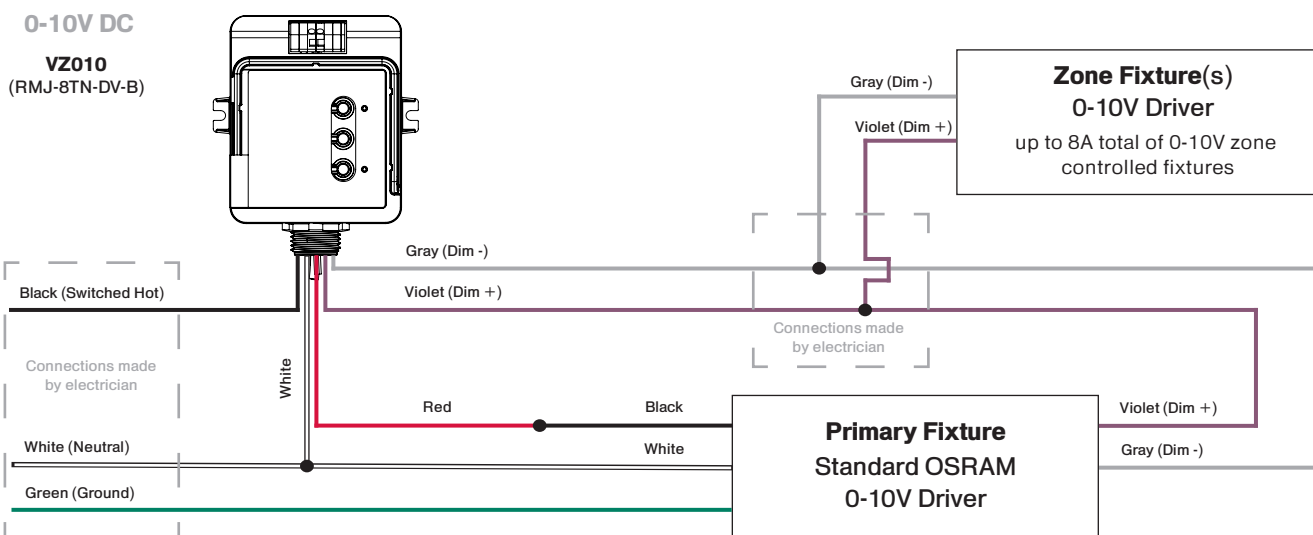
! WARNING - DO NOT WIRE HOT

Wiring/System Diagram - Zone Fixtures

Fixture	System Amperage	Total # of zone controlled fixtures	In-rush current	
			120V	277V
SYL11	0.083	30	6.5A, 115µs	14.9A, 125µs
SYL15	0.113	30	6.5A, 115µs	14.9A, 125µs
SYL20	0.145	30	6.5A, 115µs	14.9A, 125µs

Fixture	System Amperage	Total # of zone controlled fixtures	In-rush current	
			120V	277V
SYL30	0.214	26	6.7A, 150µs	15.6A, 90µs
SYL40	0.314	18	6.7A, 150µs	15.6A, 90µs
SYL50	0.393	14	12.6A, 120µs	15.9A, 116µs

Be sure to consider inrush current when sizing the circuit



ATLANTIC
LIGHTING

T: 508 678-5411 | F: 508 678-5408 www.atlantic-lighting.com