

SPECIFICATIONS

DESCRIPTION:

Wall mount Up/Down MR16 accent fixture.
Suitable for wet/damp/dry location installations.

MATERIAL:

Standard overall material is 6061 aluminum.
HL-340-2X - Machined Aluminum (Standard)
HL-340-2X-2b - Machined Brass

FINISH:

AA - Anodized Satin Aluminum
AP - Powder Coat Aluminum
BK - Powder Coat Black
BZ - Powder Coat Bronze
WT - Powder Coat White
N - Natural, for Stainless Steel and Brass

HALOGEN LAMPING OPTION:

Lamp Type - 12V halogen MR16 lamp, bi-pin
GX5.3 base, 50W max, not included (standard).

LED OPTIONS

Integral high output LED, warm white 85 CRI
(3000K CCT) standard, others available.

3LED - 3W LED - 180 lumens
8LED - 8W LED - 300 lumens
8LED-E - 8.4W LED - 565 lumens

OPTICS

3LED and 8LED:

SP - Spot, 12°
NF - Narrow Flood, 24°
FL - Flood, 36°

8LED-E:

SP - Spot 14°
NF - Narrow Flood, 25°
MF - Medium Flood, 30°
FL - Flood, 40°

VOLTAGE:

12 - 12 VAC output transformer required,
not included.

MOUNTING:

Fixture is equipped with a 4.75" mounting plate
and (2) mounting screws.

OPTIONS:

Glare shields

GL-10 - Short Angled, aluminum
GL-11 - Angled, aluminum
GL-12 - Angled, brass
GL-13 - Straight, aluminum
GL-14 - Straight, brass

Lenses/Louvers/Color Filters

LA-1 - Hexcell Louver (Black)
LA-2 - Prismatic lens
LA-3 - Linear spread lens
LA-4 - Soft focus lens (diffused)
LA-5 - Moonlight lens
LA-6 - Blue lens

See fixture accessories for more information.

SAMPLE ORDER SPECIFICATION:

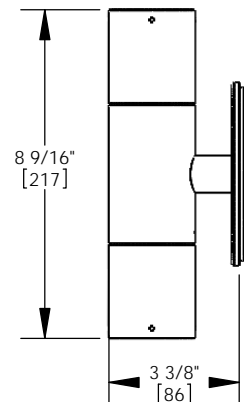
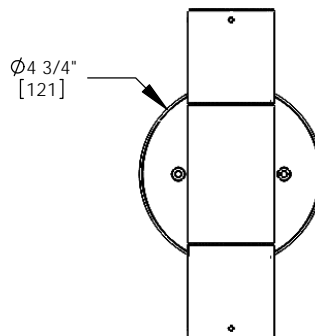
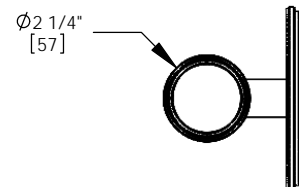
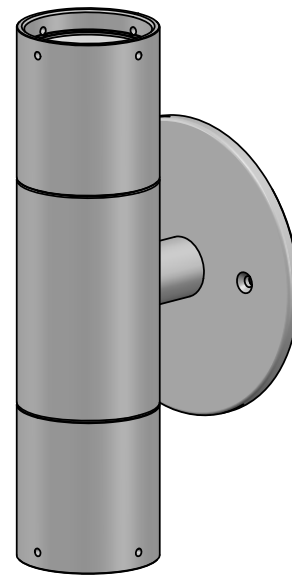
HL-340-2X-BZ-12-LA-5

RATING:

Wet/damp/dry location.



MADE IN THE USA



ORDER SPECIFICATION:

Fixture - Finish - Lamping - Voltage - Options/Access.

PROJECT:

APPROVED:

NOTE:

TYPE:



HEVI LITE, INC.

9714 Variel Ave, Chatsworth, CA 91311
Tel., (818) 341-8091 - Fax (818) 998-1986
Web Site <http://www.hevilite.com>

CATALOG NUMBER:

HL-340-2X