

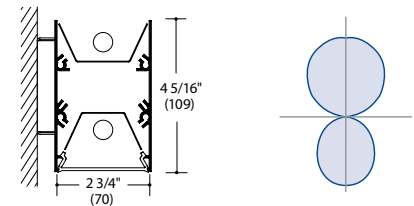
## MOD 22 Wall Indirect/Direct

Fixture Type:

Project Name:

### Ordering Guide

| Feature                            | Code | Options                                | Description   |
|------------------------------------|------|--|---|
| <b>Series</b>                      |      | 22                                     | MOD   |
| <b>Mounting</b>                    |      | W                                      | Wall-Mount  |
| <b>Fixture distribution</b>        |      | ID                                     | Indirect/Direct   |
| <b>Row length (in feet)</b>        |      | ____'                                  | Enter in foot increments. Note fixture lengths below.   |
| <b>Max length in row</b>           |      | 03<br>04<br>06<br>08<br>12             | 3', 914mm<br>4', 1219mm<br>6', 1829mm<br>8', 2438mm<br>12', 3658mm  |
| <b>Diffuser</b>                    |      | BW<br>SGL                              | Blade Baffle, White<br>Soft Glow Lens   |
| <b>Finish/Color</b>                |      | C2<br>C6<br>CC                         | Textured Matte White (Default)<br>Textured Camera Black<br>Custom Color (Textured Only)   |
| <b>Lamping (Uplight)</b>           |      | 1T5<br>1T5HO<br>1T8                    | 1-Light T5 Lamping<br>1-Light T5HO Lamping<br>1-Light T8 Lamping  |
| <b>Lamping (Downlight)</b>         |      | 1T5<br>1T5HO<br>1T8                    | 1-Light T5 Lamping<br>1-Light T5HO Lamping<br>1-Light T8 Lamping  |
| <b>Ballast (non-dimming T5/HO)</b> |      | NPN                                    | Electronic, program-start   |
| <b>Ballast (non-dimming T8)</b>    |      | NIN<br>NPN<br>NIL<br>NPL<br>NIH<br>NPH | Electronic<br>Electronic, program-start<br>Electronic, low-wattage<br>Electronic, low wattage, program-start<br>Electronic, high light output<br>Electronic, high light output, program-start |
| <b>Ballast (dimming)</b>           |      | 010V<br>LVD<br>DALI<br>LLS             | 0-10V Dimming<br>Line Voltage Dimming<br>Dali System<br>Light Level Switching 50/100<br>See <i>Ballast</i> section for additional dimming ballast options                                     |
| <b>Circuiting</b>                  |      | 1C<br>2C<br>AC<br>AF                   | 1 Circuit<br>2 Circuit- Uplight/Downlight<br>Alternate Lamp Compart Switch<br>Alternate Fixture Switching   |
| <b>Voltage</b>                     |      | UNV<br>120<br>277<br>347               | Universal Voltage<br>120 Volt<br>277 Volt<br>347 Volt   |



### Key Features

- ADA Compliant wall-mount

## MOD 22 Wall Indirect/Direct

### Ordering Guide (continued)

| Optional Features  | Code | Options              | Description  |
|--------------------|------|----------------------|--|
| <b>Nightlight</b>  |      | _NL                  | Nightlight Circuit Required. Enter quantity.<br>2NL = 2 nightlight circuits/row  |
| <b>Emergency</b>   |      | _EF                  | Emergency Battery Required. Enter quantity.<br>2EF = 2 emergency batteries/row<br>*Available only in 4' or greater lengths   |
| <b>Thru-wiring</b> |      | W1<br>W2<br>W3<br>W4 | No Thru Wire<br>Provide Normal and Emergency Thru Wiring*<br>Provide Normal Thru Wiring Only<br>Provide Emergency Thru Wiring Only<br>*Only applicable when specified with emergency |
| <b>Fuse</b>        |      | F                    | Fuse   |

## MOD 22 Wall Indirect/Direct

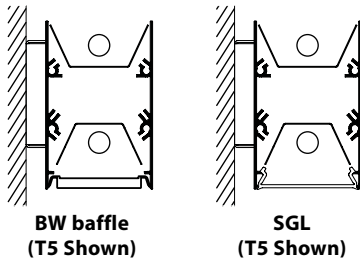
### Details

**Construction:**

Housing-extruded aluminum.  
End caps-flat. Steel.

**Diffuser Options:**

BW Blade Baffle, textured matte white.  
SGL Soft Glow Lens, extruded frosted acrylic.



**Row Joining:**

Fixture end headers are threaded in two locations to allow easy row joining.

**Distribution:**

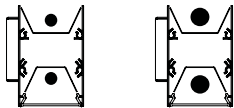
60/40(nominal) indirect/direct.

**Finish/Color:**

Visit [www.litecontrol.com/finishes](http://www.litecontrol.com/finishes) for details.

**Lamping:**

Available in one-lamp T8, T5 and T5HO cross-sections. T8 upper lamp is diagonally positioned along length to clear suspension hardware at fixture ends for "on-module" suspension, and provide symmetrical light distribution.



1-T5 or T5HO

1-T8

**Ballast:**

Electronic, high power factor, thermally protected Class P, Sound Rated A, less than 10% THD, manufactured by a UL Listed manufacturer, as available, determined by Litecontrol. Ballasts with a voltage range of 120 to 277 will be used when fixture configuration and ballast availability allow. The minimum number of ballasts will be used.

**Additional Dimming Ballast Options:**

|      |                              |                         |
|------|------------------------------|-------------------------|
| LE30 | Lutron EcoSystem-3 Wire      | (Normal Ballast Factor) |
| LEH0 | Lutron EcoSystem-H Series    | (Normal Ballast Factor) |
| LEH7 | Lutron EcoSystem-H Series    | (High Ballast Factor)   |
| LEI0 | Lutron EcoSystem-Intelligent | (Normal Ballast Factor) |
| LH3D | Lutron HiLume 3D-3 Wire      | (Normal Ballast Factor) |
| LH37 | Lutron HiLume 3D-3 Wire      | (High Ballast Factor)   |
| LHHL | Lutron HiLume-Traditional    | (Normal Ballast Factor) |
| LHID | Lutron HiLume-3D Intelligent | (Normal Ballast Factor) |
| LH17 | Lutron HiLume-3D Intelligent | (High Ballast Factor)   |

**Circuiting:**

1C (1 Circuit) Fixture wired for a single circuit.  
2C (2 Circuit) Uplight/Downlight lamps are switched separately.  
AC (alternate lamp compartment switching) Fixtures wired so every other lamp section can be separately switched/dimmed  
AF (alternate fixture switching) Fixtures wired so every other fixture segment can be separately switched/dimmed.

**Nightlight:**

See separate LC-Nightlight spec sheet for additional details.

**Emergency:**

Battery-powered ballast from a listed manufacturer will operate one lamp for 90 minutes.

**Thru wiring:**

See separate LC-Thruwire spec sheet for additional details.

**Fuse:**

Slow or fast blow; determined by Litecontrol.

**Ratings:**

UL listed for damp locations. IBEW. AF of L.

**Warranty:**

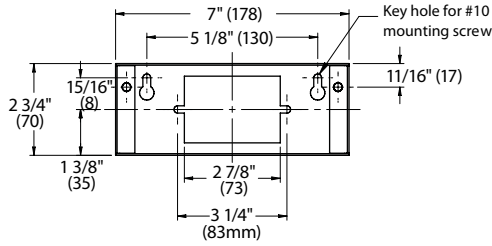
1 year  
see [www.litecontrol.com](http://www.litecontrol.com) for details

## MOD 22 Wall Indirect/Direct

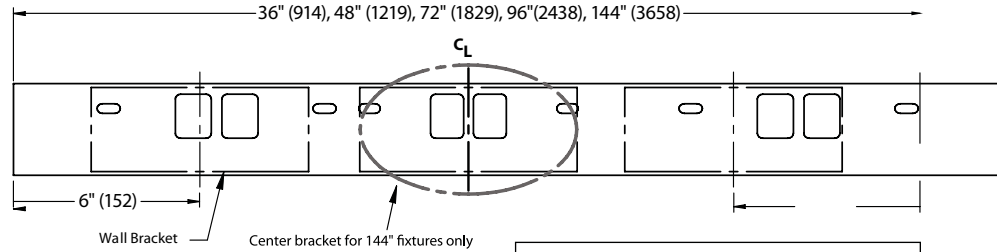
### Details

#### Planning for installation

Wall Bracket Detail



Fixture Side View



Row Diagram

