

# TIGER VHT LED

Architectural Indoor



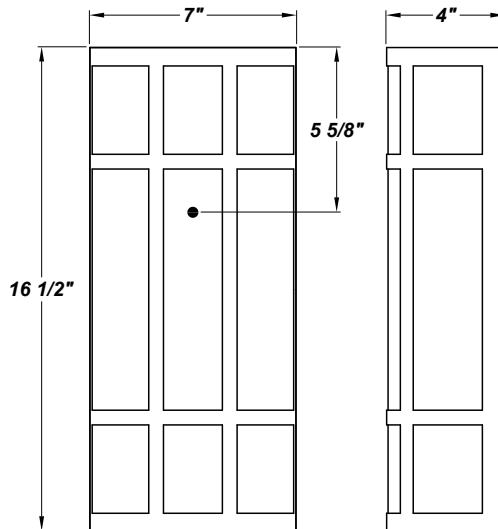
PROJECT:	
TYPE:	
PO#:	QTY:
COMMENTS:	

## FEATURES

- ADA Compliant
- Aluminum Mounting Plate Mounts to Flat Surface
- Centered Over and Mounted to 4" J-Box (By Others)
- CSA Listed Dry Location For Wall Mount
- Dimmable to 10%
- Luminous White Acrylic Diffuser
- Mounting Hardware Included
- Open Top and Bottom
- Steel Fascia with Matte Silver Powder Coat Finish

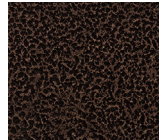
## LINE DRAWING

LINE DRAWING NOT TO SCALE

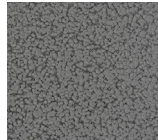


## FINISHES

Antique Copper



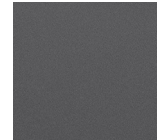
Antique Silver



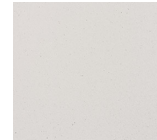
Bronze Mist



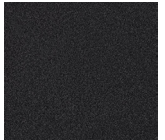
Matte Silver



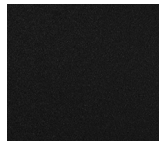
Sand



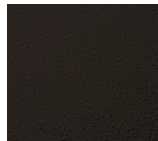
Swedish Steel



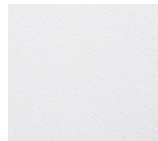
Textured Black



Textured Bronze



Textured White



For RAL Colors & Custom Match - Contact Teron Lighting Inc.

# TIGER VHT LED

Architectural Indoor



Fixture Core

PROJECT:	
TYPE:	
PO#:	QTY:
COMMENTS:	

PRODUCT CODE	SOURCE/WATTAGE	VOLTAGE	DIMMING DRIVER
TGR - Tiger	<b>L12.0-LT350</b> - 12.0W LED Strips @ 350mA 2-Wire Trailing or Leading Edge Driver <b>L18.0-LT500</b> - 18.0W LED Strips @ 500mA 2-Wire Trailing or Leading Edge Driver	<b>100-277V</b> (120-230V Dimmable For Most LT LED Drivers) (ZE 0-10V Drivers Are Dimmable From 120V - 277V)	Not Applicable
ORDER INFO			
TGR Example ^	L12.0-LT350	100-277V	Not Applicable

Aesthetics & Options

TRIM	FINISH	COLOR TEMP	OPTIONS
VHT	<b>AC</b> - Antique Copper <b>TB</b> - Textured Black <b>AS</b> - Antique Silver <b>BT</b> - Bronze Mist <b>BZ</b> - Textured Bronze <b>SM</b> - Matte Silver (Standard) <b>TW</b> - Textured White <b>SN</b> - Sand <b>SW</b> - Swedish Steel	<b>30K</b> - 3000K Color Temp <b>35K</b> - 3500K Color Temp <b>40K</b> - 4000K Color Temp	<b>F</b> - Fused <b>TBC</b> - Perforated Steel Top & Bottom Covers <b>TCV</b> - Perforated Steel Top Cover
ORDER INFO			
VHT Example ^	AC	30K	F

PROD	SOURCE	30K SPECS				
TGR	L12.0	<ul style="list-style-type: none"> <li>30K - 3000K Color Temp</li> <li>1400 LED Source Lumens</li> <li>116.7 LED Source Lumens Per Watt</li> </ul>				
	L18.0	<ul style="list-style-type: none"> <li>30K - 3000K Color Temp</li> <li>1986 LED Source Lumens</li> <li>110.3 LED Source Lumens Per Watt</li> </ul>				

REPLACEMENT PART	PART NO	NOTES
White Acrylic Lens	3040960	
		Don't see the configuration you are looking for? Call us today at (513) 858-6004



**TERONLIGHTING.COM**  
 33 DONALD DR, FAIRFIELD, OH 45014  
 P: 513.858.6004 F: 513.858.6038  
 E: SALES@TERONLIGHT.COM



We reserve the right to revise the design components of any product due to parts availability or change in UL standards, without assuming any obligation or liability to modify any products previously manufactured, and without notice.

# TIGER VHT LED

Architectural Indoor



Fixture Core

PROJECT:	
TYPE:	
PO#:	QTY:
COMMENTS:	

PRODUCT CODE	SOURCE/WATTAGE	VOLTAGE	DIMMING DRIVER
TGR - Tiger	<b>L18.0-ZE500</b> - 18.0W LED Strips @ 500mA Low Voltage 4-Wire Dimming Electronic Driver	<b>100-277V</b> (120-230V Dimmable For Most LT LED Drivers) (ZE 0-10V Drivers Are Dimmable From 120V - 277V)	<b>Not Applicable</b>
ORDER INFO			
TGR Example ^	L18.0-ZE500	100-277V	Not Applicable

Aesthetics & Options

TRIM	FINISH	COLOR TEMP	OPTIONS
VHT	<b>AC</b> - Antique Copper <b>AS</b> - Antique Silver <b>BT</b> - Bronze Mist <b>SM</b> - Matte Silver (Standard) <b>SN</b> - Sand <b>SW</b> - Swedish Steel <b>TB</b> - Textured Black <b>BZ</b> - Textured Bronze <b>TW</b> - Textured White	<b>30K</b> - 3000K Color Temp <b>35K</b> - 3500K Color Temp <b>40K</b> - 4000K Color Temp	<b>F</b> - Fused <b>TBC</b> - Perforated Steel Top & Bottom Covers <b>TCV</b> - Perforated Steel Top Cover
ORDER INFO			
VHT Example ^	AC	30K	F

PROD	SOURCE	30K SPECS			
TGR	L18.0	<ul style="list-style-type: none"> <li>• 30K - 3000K Color Temp</li> <li>• 1986 LED Source Lumens</li> <li>• 110.3 LED Source Lumens Per Watt</li> </ul>			

REPLACEMENT PART	PART NO	NOTES
White Acrylic Lens	3040960	

Don't see the configuration you are looking for?  
Call us today at (513) 858-6004



TERONLIGHTING.COM  
 33 DONALD DR, FAIRFIELD, OH 45014  
 P: 513.858.6004 F: 513.858.6038  
 E: SALES@TERONLIGHT.COM



We reserve the right to revise the design components of any product due to parts availability or change in UL standards, without assuming any obligation or liability to modify any products previously manufactured, and without notice.