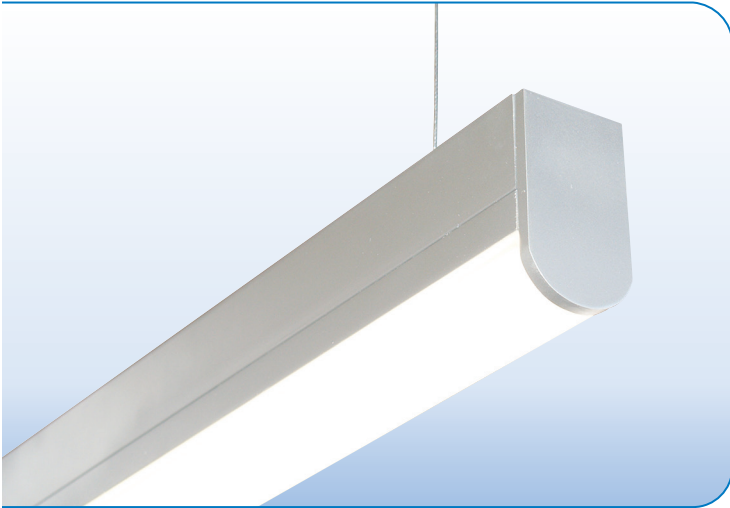
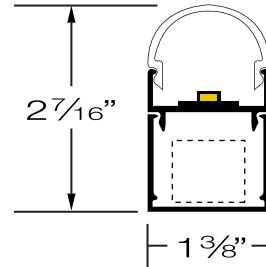




LINEAR LED CABLE SUSPENDED / SURFACE MOUNT



PROJECT:
TYPE:



SPECIFICATIONS

HOUSING	Extruded aluminum housing up to 12' long. Continuous runs available.
FINISH	Satin anodized or white paint finish standard. Custom finish optional.
LENS	Extruded DR acrylic, snap-on frosted widespread lens.
LED DRIVER	Integral, universal voltage; 0-10V dimming standard; 1% dimming optional.
K/O's	Optional. 1/2" Back service hole provided for surface mount when using blank endcaps only.
MOUNTING	SURFACE MOUNT: Mounting holes pre-drilled. See page 2 for details. CABLE SUSPENDED: Aircraft cable suspension kit (SK), canopy and prewired with 18/5 SVT cord.
LED's	60,000 hours. (L70), High uniformity, 85 CRI, by Nichia and Cree.
CERTIFICATION	ETL/CSA listed for damp locations. 2001431 MADE IN THE USA

LED COLOR & LUMEN OPTIONS

LED COLOR	CRI	LUMENS PER FOOT – WATTS PER FOOT – LUMENS PER WATT								
		LOW			MEDIUM			HIGH		
WHITE 2700K	85	458 L/FT	3.9 W/FT	117 L/W	850 L/FT	7.9 W/FT	107 L/W	1149 L/FT	11.5 W/FT	100 L/W
WHITE 3000K	85	474 L/FT	3.9 W/FT	121 L/W	878 L/FT	7.9 W/FT	111 L/W	1187 L/FT	11.5 W/FT	103 L/W
WHITE 3500K	85	487 L/FT	3.9 W/FT	124 L/W	903 L/FT	7.9 W/FT	114 L/W	1221 L/FT	11.5 W/FT	106 L/W
WHITE 4000K	85	497 L/FT	3.9 W/FT	126 L/W	920 L/FT	7.9 W/FT	116 L/W	1244 L/FT	11.5 W/FT	108 L/W

Values include .85 driver efficiency factor. Higher lumen packages available.

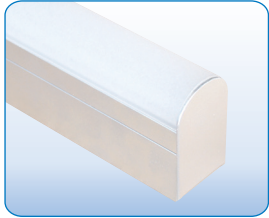
FIXTURE LENGTHS

NOMINAL LENGTH	1'	2'	3'	4'	5'	6'	7'	8'	9'	10'	11'	12'
ACTUAL LENGTH	14"	23"	34"	49"	56"	73"	89"	97"	111"	121"	133"	145"

PART NUMBER

SERIES	LUMENS	COLOR	VOLTS	MOUNTING	ENDCAP STYLE	FINISH	LENGTH
ALX3-RLR-LED	L LOW	27K 2700K	UNV	<u>SURFACE MOUNT</u>	<u>STANDARD ENDCAP</u>	S SATIN	1' 7"
	M MEDIUM	3K 3000K	(120/277)	SM SURFACE MOUNT	SEB BLANK ENDS	W WHITE	2' 8"
	H HIGH	35K 3500K	10% DIM	JBP J BOX PLATE	SEK ONE END K/O	C CUSTOM	3' 9"
	CP CUSTOM PROGRAMMED (Specify Lumens/FT or Watts/FT)	4K 4000K	UNV 1%	<u>CABLE SUSPENDED</u>	<u>ARCHITECTURAL ENDCAP</u>	AEB BLANK ENDS	4' 10"
			(120/277)	SK36 36" CABLE KIT	SEBK BOTH ENDS K/O		5' 11"
			1% DIM	SK72 72" CABLE KIT	<u>DECORATIVE ENDCAP</u>		6' 12"
					DEB BLANK ENDS		

ENDCAP STYLES

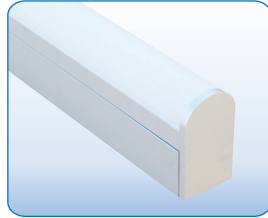


STANDARD ENDCAP

K/O OPTIONS

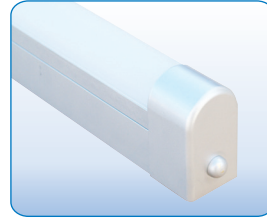
- SEB** BLANK ENDS
- SEK** ONE END K/O+
- SBEK** BOTH END K/O+

+ Easy Row Mounting
 ++ Consult Factory for Row Mounting



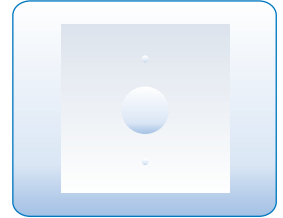
ARCHITECTURAL ENDCAP

- AEB** BLANK ENDS
- 3/16" PLATE ENDCAP++**
- 1/2" BACK SERVICE HOLE**



DECORATIVE ENDCAP

- DEB** BLANK ENDS
- CUPPED ENDCAP++**
- 1/2" BACK SERVICE HOLE**

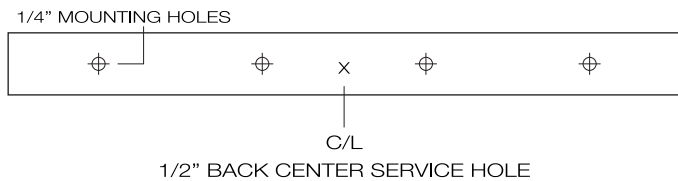
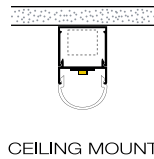
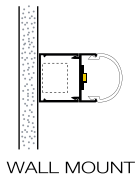


J-BOX PLATE

- JBP** 5" FLAT CANOPY
- PLATE TO COVER**
- J-BOX**

MOUNTING DETAILS

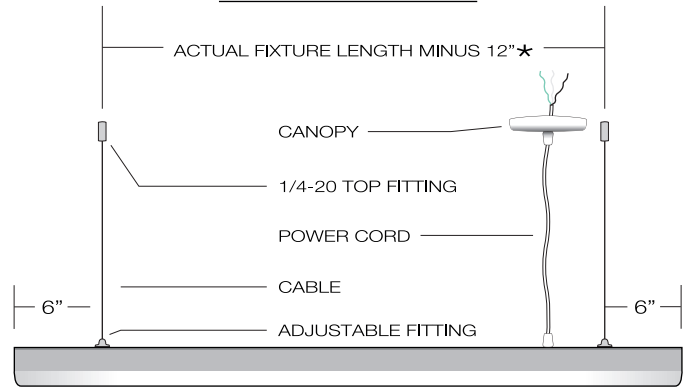
SURFACE MOUNT



- 1/4" Mounting holes provided evenly spaced on back channel.
- 1/2" Back center service hole for snap-in connector provided for surface mount applications when using standard blank endcap, architectural or decorative endcap.
- 1' and 2' fixtures require off center service hole (field drill) due to 12" driver

Note: Narrow housing will not cover recessed J-Box. Whip feed recommended. Use optional "JBP" canopy for J-Box mount.

CABLE SUSPENDED



- SK36** 36" Suspension Kit
- SK72** 72" Suspension Kit
- Other cable lengths available.

- Suspension Kit includes:
- (2) Top Fittings for 1/4-20 Rod
 - (2) Adjustable Bottom Fittings
 - (2) Aircraft Cables
 - (1) Prewired 18/5 White SVT Cord
 - (1) White Canopy with Mounting Hardware

*Custom pendant spacing available; consult factory
 *Lengths over 8' require center cable support

PHOTOMETRICS

CONSULT FACTORY