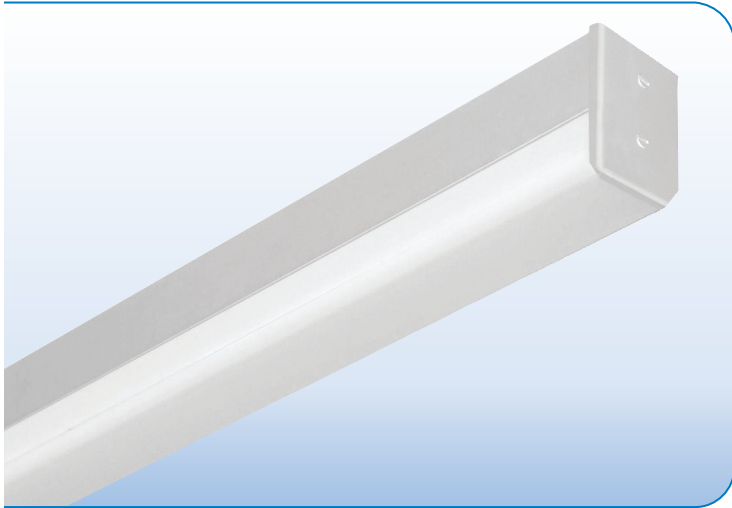


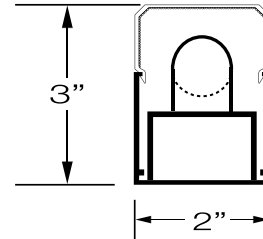


## WET LOCATION / SURFACE MOUNT





PROJECT: \_\_\_\_\_

TYPE: \_\_\_\_\_



### SPECIFICATIONS

<b>HOUSING</b>	Extruded aluminum housing up to 12' long.
<b>FINISH</b>	Satin anodized or white paint finish standard. Custom finish optional.
<b>LENS</b>	Extruded, round snap-on clear and frosted linear prismatic serrated widespread lens.
<b>GASKET</b>	1/4" Neoprene gasket between endcap and lens prevents dirt/bug entry and light leak.
<b>BALLAST</b>	Integral 120V or 277V electronic ballast. Dimming ballast available.
<b>MOUNTING</b>	<b>SURFACE MOUNT:</b> Mounting holes, field drilled as required.
<b>CERTIFICATION</b>	ETL listed for wet locations.  2001431  <b>MADE IN THE USA</b>

### LAMPS & FIXTURE LENGTHS

LAMP TYPE	T5			
LAMP WATTAGE	14, 24W	21, 39W	28, 54W	35, 80W
LAMP DIMENSION	22 3/16"	33 7/8"	45 3/4"	57 9/16"
FIXTURE LENGTH	25"	37"	49"	61"
TANDEM FIXTURE LENGTH	N/A	71"	95"	119"

T8			
17W	25W	32W	40W
24"	36"	48"	60"
26"	38"	50"	62"
N/A	74"	98"	122"

T5T, T8T Denotes Tandem

### PART NUMBER

SERIES	WATTS	LENS	VOLTS	BALLAST	FEED & MOUNTING	OPTIONS	FINISH	LENGTH
ALX2-SQL-WL-T5	REFER	F FROSTED	120	IS INST. START	SURFACE MOUNT	LS LIGHT SENSOR	S SATIN	REFER
ALX2-SQL-WL-T5T	TO	C CLEAR	277	PS PROG. START	B BACK CTR K/O	MS MOTION SENSOR	W WHITE	TO
ALX2-SQL-WL-T8	CHART		UNV	<b>DIMMING</b>	E ONE END K/O		C CUSTOM	CHART
ALX2-SQL-WL-T8T	ABOVE			CONSULT	BE BOTH END K/O	<b>EM PACKS</b>		ABOVE
				FACTORY	FD FIELD DRILL	EM 500L		