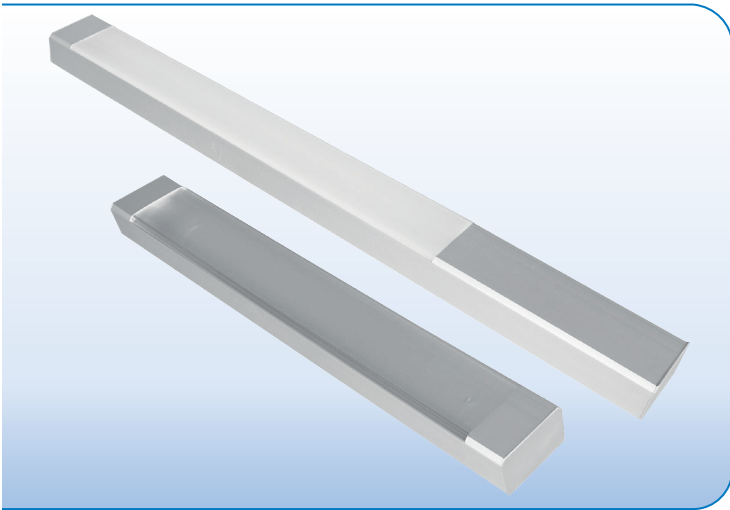
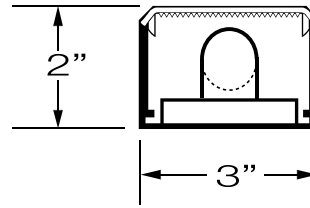




FLUORESCENT CABLE SUSPENDED / SURFACE MOUNT



PROJECT: _____
 TYPE: _____



SPECIFICATIONS

HOUSING	3" x 2" Two piece snap together top/bottom extruded aluminum housing up to 12' long.
FINISH	Satin anodized or white paint finish standard. Custom finish optional.
LENS	Extruded snap-on clear or opal white linear prismatic acrylic, serrated widespread lens.
MOUNTING	Surface mount standard, optional aircraft cable suspension kit (SK) 36" standard. Other lengths available. Aircraft cables mounted 6" from each end of fixture.
BALLAST	Integral or remote 120 or 277V electronic ballast. Dimming ballast available.
CERTIFICATION	UL listed for damp locations. E211631 MADE IN THE USA



LAMPS & FIXTURE LENGTHS

LAMP TYPE	T5			
	14, 24W	21, 39W	28, 54W	35, 80W
LAMP DIMENSION	22 3/16"	33 7/8"	45 3/4"	57 9/16"
INTEGRAL BALLAST FIXTURE LENGTH	32"	44"	57"	68"
INTEGRAL BALLAST TANDEM LENGTH	N/A	78"	103"	126"
REMOTE BALLAST FIXTURE LENGTH	24"	36"	48"	60"
REMOTE BALLAST TANDEM LENGTH	N/A	70"	94"	118"

T8			
17W	25W	32W	40W
24"	36"	48"	60"
33"	46"	58"	70"
N/A	82"	106"	130"
26"	38"	50"	62"
N/A	74"	98"	122"

PART NUMBER

SERIES	WATTS	LENS	VOLTS	BALLAST	K/O & MOUNTING	FINISH	LENGTH
ALX1-RL-T5	REFER	C CLEAR	120	I INTERGRAL	<u>SURFACE MOUNT</u>	S SATIN	REFER
ALX1-RL-T5T	TO	W WHITE	277	R REMOTE	B BACK CTR K/O	W WHITE	TO
ALX1-RL-T8	CHART	F FROSTED	<u>DIMMING</u>		E ONE END	C CUSTOM	CHART
ALX1-RL-T8T	ABOVE		120D		BE BOTH END		ABOVE
			277D		FD FIELD DRILL		
					<u>CABLE SUSPENDED</u>		
					SK36 36" CABLE KIT		
					SK72 72" CABLE KIT		

Consult factory for LED options.