

FCD7000



Date:		Approved:
Type:		
Fixture:		
Project:		

FCD7000 Linear Inground 2-foot long Uplight has a 316 Stainless Steel Trim, with included aluminum well housing, is IP67 rated for exterior use where inground applications are required.

SPECIFICATIONS

PHYSICAL

beam spread	Spot-10° Narrow Flood-25° Flood-40° Wide Flood-120° Asymmetric-21° x 56°
lengths/dimensions [LxDxH]	fixture: 4.75"W x 3.8"D x 25.7"L mounting sleeve: 4.3"W x 9.5"D x 25.12"L
weight	13.8 lbs
housing	marine grade, corrosion resistant, high pressure aluminum (includes mounting sleeve)
lens	1KO impact compliant, 3/8" thick clear tempered, standard. Optional: SR = Slip Resistance, etched outer surface
mounting	concrete pour installation (mounting sleeve included) - drainage required (Improperly installed fixtures will void warranty)
ingress protection	IP67 : dry, damp or wet locations with neoprene continuous closed cell gasket to seal out contaminants
finish	316 machined stainless steel faceplate

PERFORMANCE

color temperature	2700K	3000K	3500K	4000K	
lumen output	1200 lm				
lifetime	> 70,000 hours / L90 or better				
color consistency	Step 2 McAdams Ellipse / standard: CRI ≥ 84 optional: CRI ≥ 90 CRI				
temperature	operating: max 143°F (62C) start up: -22°F (-30°C) storage: -40°F to 185°F (-40°C to 85°C)				
junction temperature	73°C @ T ^a 25°C				
warranty	5 year limited warranty (refer to website for details)				

ELECTRICAL

input voltage	Universal 120–277V AC
power supply	Integral Class II, electronic, high power factor > 94% @120V
certifications	ETL / cETL Listed, CEC Title 24 JA8 compliant (only 90CRI complies)
standards	UL 1598 / CSA C22.2 No. 250.0 - Class I / IES LM-79 / LM-80
power consumption	19.5W @ 120V - 277V
dimming interface	standard: 0-10V (10%) optional: ELV (120V only)

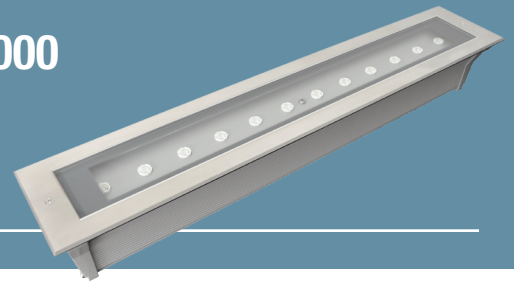


Due to continuous development and improvements, specifications are subject to change without notice. FC Lighting reserves the right to change lab test details or specifications without notice. Product use certifies agreement to FC Lighting terms and conditions. FCC Series Cylinder Lights are engineered and produced in our Illinois manufacturing facility.

 US Commercial Lighting Manufacturer Since 1982

Specification Sheet

Ordering Information



ORDERING INFORMATION

FCD7000				12L	SS		
SERIES	VOLTAGE	CCT	CRI	LUMENS	FINISH	OPTICS	OPTIONS
FCD7000 (2 ft)	UNV UNV 120V-277V	27K 2700K	CRI84 84 CRI	12L 1200 lm (20W)	SS Stainless Steel	SP Spot 10°	LD LED Dimming (0-10V) standard
	120V 120V AC (integral)	3K 3000K	CRI90 90 CRI			NFL Narrow Flood 25°	ELV ELV Dimming (120 only)
	277V 277V* AC (integral)	35K 3500K				FL Flood 40°	LVR Louver
		4K 4000K				AYM Asymmetrical 21°x 56°	OL Opal Lens (<i>symmetrical only</i>)
						WFL Wide Flood 120°	SR Slip Resistant

REMOTE DRIVER & BATTERY BACKUP

FCD7000R	UNV			12L	SS		
SERIES	VOLTAGE	CCT	CRI	LUMENS	FINISH	OPTICS	OPTIONS
FCD7000R [†] (2 ft)	UNV 120V-277 Volts	27K 2700K	CRI84 84 CRI	12L 1200 lm (20W)	SS Stainless Steel	SP Spot 10°	LD LED Dimming (0-10V) standard
		3K 3000K	CRI90 90 CRI			NFL Narrow Flood 25°	ELV ELV Dimming (120 only)
		35K 3500K				FL Flood 40°	LVR Louver
		4K 4000K				AYM Asymmetrical 21°x 56°	OL Opal Lens (<i>symmetrical only</i>)
						WFL Wide Flood 120°	SR Slip Resistant
							BBUR ¹ Battery Backup Remote (Indoor)
							BBUX ² Battery Backup Remote (Outdoor)
							N/A Leave Blank for Remote Driver Only (without Battery Backup)

[†] LED DRIVER REMOTE (INDOOR) IP20, IK08, NEMA 1, -20°C to +50°C, 30' MAX Distance with 12AWG.

* Consult factory for outdoor remote driver only.

¹ Battery Back-up & LED Driver Remote (INDOOR), IP20, IK08, NEMA 1, 0°C to +48°C, 30' MAX Distance with 12AWG (w/UNV Option Only)

² Battery Back-up & LED Driver Remote (OUTDOOR), IP67, IK10, NEMA 4X, -20°C to +55°C, 30' MAX Distance with 12AWG (w/UNV Option Only)

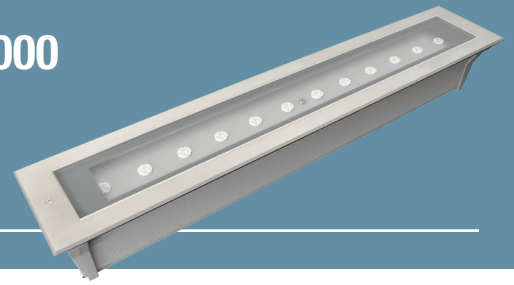
Due to continuous development and improvements, specifications are subject to change without notice. FC Lighting reserves the right to change lab test details or specifications without notice. Product use certifies agreement to FC Lighting terms and conditions. FCC Series Cylinder Lights are engineered and produced in our Illinois manufacturing facility.



US Commercial Lighting Manufacturer Since 1982

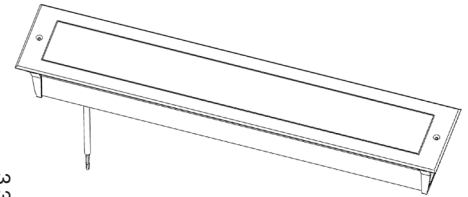
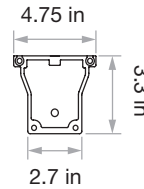
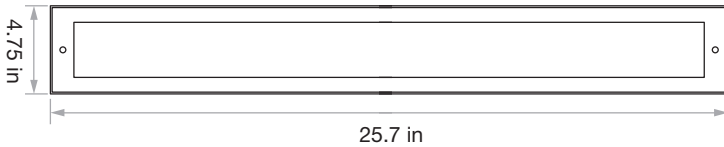
Specification Sheet

Dimensions



PRODUCT DIMENSIONS - STANDARD PRODUCT

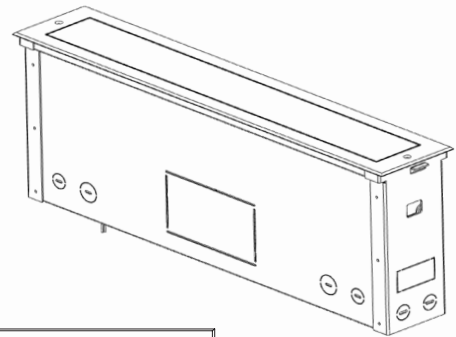
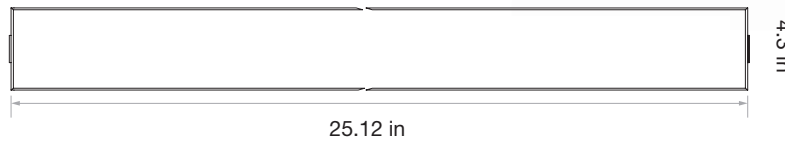
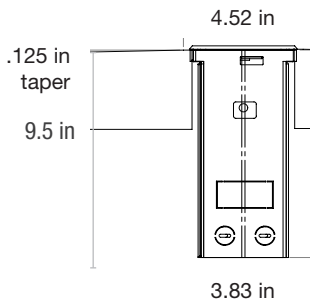
width	4.75" W
depth	3.8" D
length	25.7" L



MOUNTING - mounting sleeve included, one per fixture

mounting sleeve width	4.52" W
mounting sleeve length	25.12" L
well housing depth	9.5" D

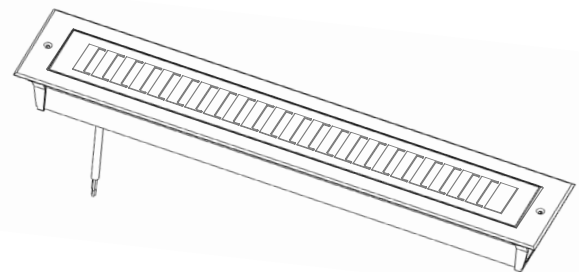
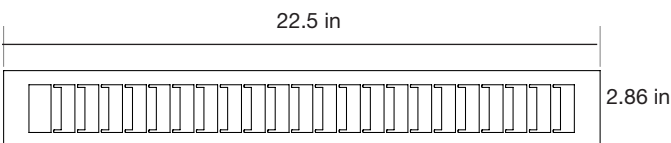
Improperly installed fixtures will void warranty, see installation instructions on fclighting.com for details.



ACCESSORIES

LVR - louver	inside housing
---------------------	----------------

factory installation required



Due to continuous development and improvements, specifications are subject to change without notice. FC Lighting reserves the right to change lab test details or specifications without notice. Product use certifies agreement to FC Lighting terms and conditions. FCC Series Cylinder Lights are engineered and produced in our Illinois manufacturing facility.

 US Commercial Lighting Manufacturer Since 1982

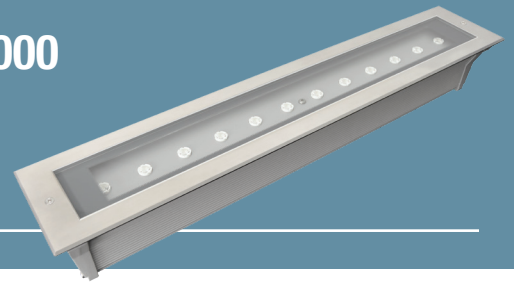
© FC Lighting 3609 Swenson Ave. • St. Charles, IL • 60174 | fclighting.com | 800.900.1730

Specification Sheet

SO-JF-111521

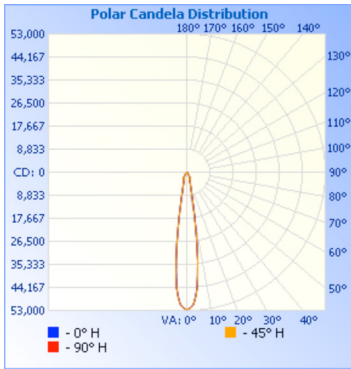
Photometry

FCD7000



SPOT DISTRIBUTION

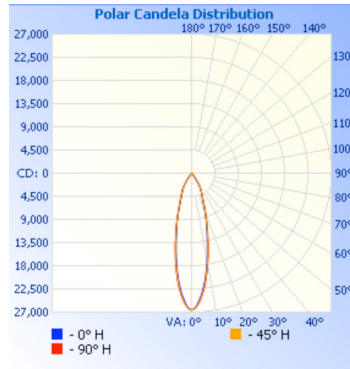
beam spread | 10°



	Center Beam fc	Beam Width
1.7ft	18,183 fc	0.5 ft
3.3ft	4,826 fc	1.0 ft
5.0ft	2,102 fc	1.5 ft
6.7ft	1,171 fc	2.0 ft
8.3ft	763 fc	2.4 ft
10.0ft	526 fc	2.9 ft

MID SPOT DISTRIBUTION

25°

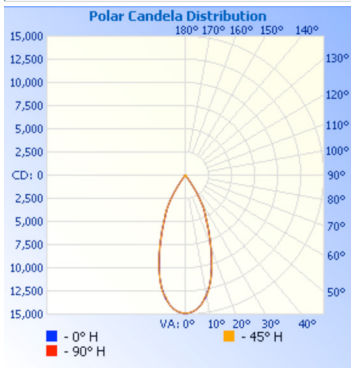


	Center Beam fc	Beam Width
1.7ft	9,190 fc	0.8 ft
3.3ft	2,439 fc	1.5 ft
5.0ft	1,062 fc	2.3 ft
6.7ft	592 fc	3.1 ft
8.3ft	386 fc	3.9 ft
10.0ft	266 fc	4.7 ft

■ Vert. Spread: 26.4°
■ Horiz. Spread: 27.6°

FLOOD DISTRIBUTION

beam spread | 40°

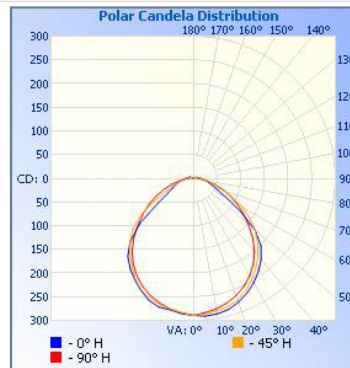


	Center Beam fc	Beam Width
1.7ft	1,001 fc	1.8 ft
3.3ft	266 fc	3.5 ft
5.0ft	116 fc	5.3 ft
6.7ft	64.4 fc	7.1 ft
8.3ft	42.0 fc	8.8 ft
10.0ft	28.9 fc	10.6 ft

■ Vert. Spread: 55.8°
■ Horiz. Spread: 56.2°

WIDE FLOOD DISTRIBUTION

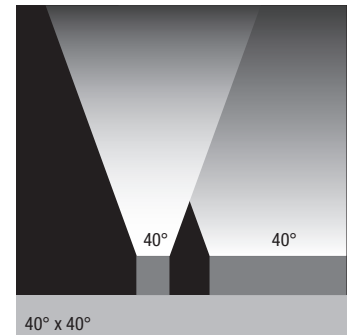
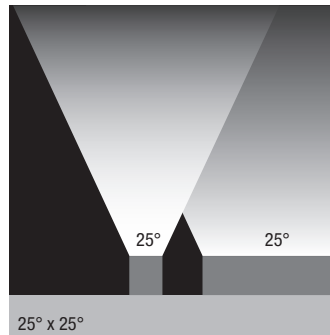
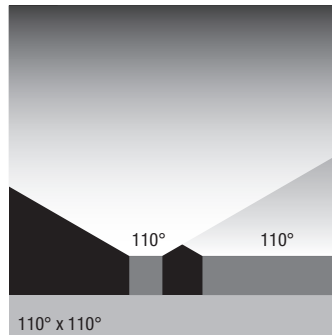
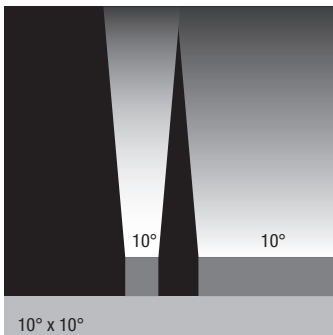
120°



	Center Beam fc	Beam Width
1.7ft	100 fc	4.2 ft
3.3ft	26.5 fc	8.2 ft
5.0ft	11.6 fc	12.5 ft
6.7ft	6.44 fc	16.7 ft
8.3ft	4.20 fc	20.7 ft
10.0ft	2.89 fc	25.0 ft

■ Vert. Spread: 102.6°
■ Horiz. Spread: 102.8°

FCD7000 AVAILABLE OPTICS FIND IES FILES ON FCLIGHTING.COM



Due to continuous development and improvements, specifications are subject to change without notice. FC Lighting reserves the right to change lab test details or specifications without notice. Product use certifies agreement to FC Lighting terms and conditions. FCC Series Cylinder Lights are engineered and produced in our Illinois manufacturing facility.

 US Commercial Lighting Manufacturer Since 1982

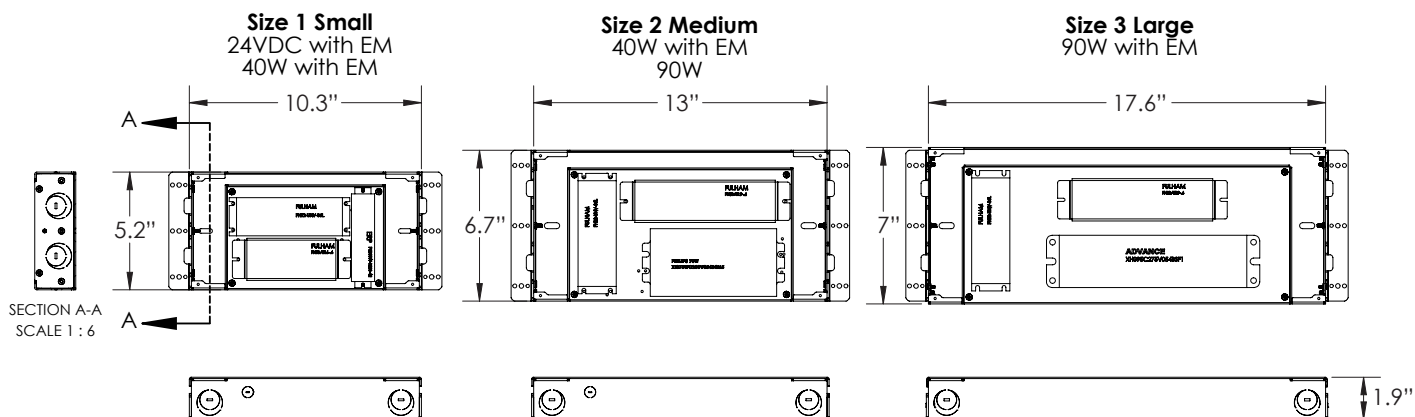
© FC Lighting 3609 Swenson Ave. • St. Charles, IL • 60174 | fclighting.com | 800.900.1730

Specification Sheet

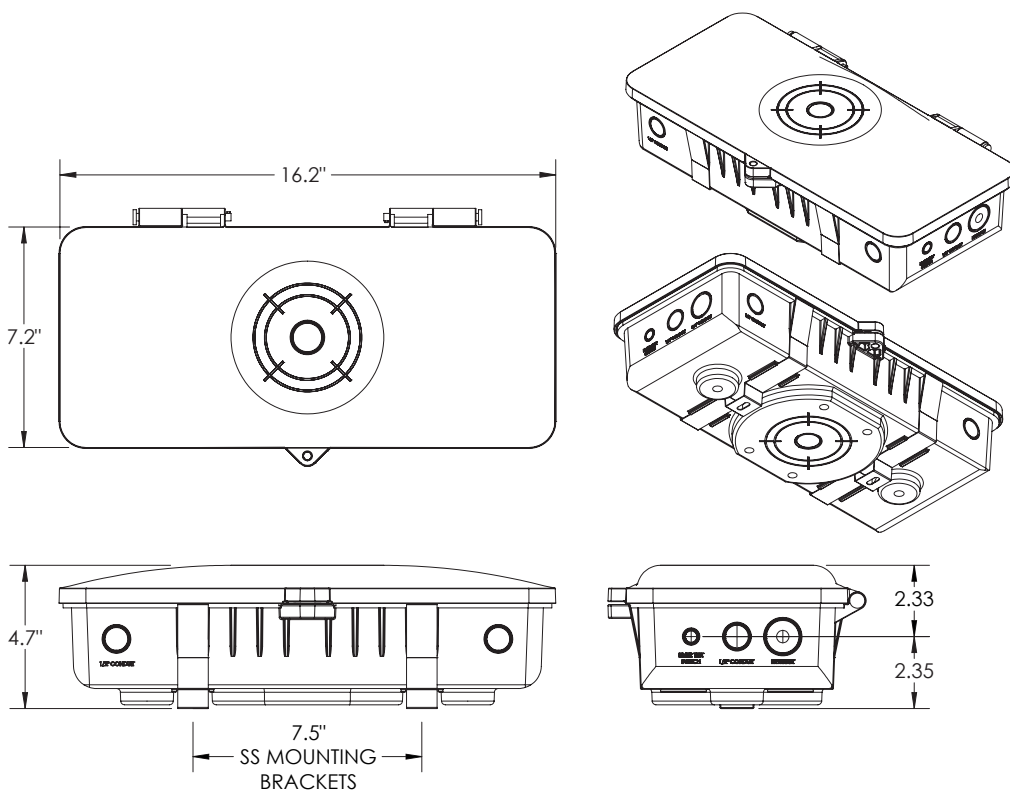
SO-JF-111521

BATTERY BACK-UPS

BBUR - BATTERY BACK-UP & LED DRIVER REMOTE (INDOOR), IP20, IK08, NEMA 1, 0°C to +48°C, 30' MAX Distance with 12AWG (w/UNV Option Only)



BBUX - BATTERY BACK-UP & LED DRIVER REMOTE (OUTDOOR), IP67, IK10, NEMA 4X, -20°C to +55°C, 30' MAX Distance with 12AWG (w/UNV Option Only)



Due to continuous development and improvements, specifications are subject to change without notice. FC Lighting reserves the right to change lab test details or specifications without notice. Product use certifies agreement to FC Lighting terms and conditions. FCC Series Cylinder Lights are engineered and produced in our Illinois manufacturing facility.



US Commercial Lighting Manufacturer Since 1982

Specification Sheet