

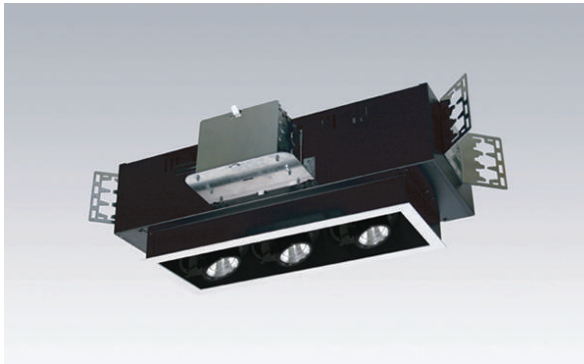
MCLD-DOB

Multiple Cluster 120VAC LED DoB Recessed Downlight
1, 2, 3 or 4 lights 15W, 20W & 30W LED

Catalog		Type
Project		Date
Prepared by		

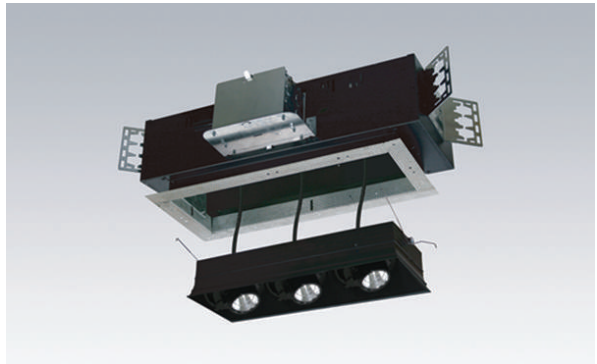


Finish : ■ Black
■ Silver
□ White



0.75" Trim Flange

ACCENT MULTIPLE LIGHTS WITH HIGH WATTAGE LED MODULES



Trimless

DESCRIPTION

The N-Series of Multiple Cluster, LED DoB Recessed Downlights are part of the MCL family and are designed with state-of-the-art LED DoB direct 120VAC technology. All of the MCLD models feature high end, Architectural Spec quality with the energy efficiency and all the advantages of a LED source. The N-series are for new construction and are offered in 1 to 4 lamp versions. Equivalent to MCL PAR20 / MR16 size housings.

DESIGN FEATURES

Housing

- Non-IC rated new construction housing available in single lamp through 4 lamps models
- Designed for easy accessibility from below ceiling.

Trim

- Aluminum diecast, powder coated trim with 0.75" overlap flange around the ceiling opening.

Trimless

- Adjustable perforated mesh for Trimless Drywall Mud Framing in drywall/plaster ceilings. Allows for mud compound to be applied for a clean, trimless look.

Junction Box

- Listed, through branch circuit wiring
[max.8 No 12AWG 90 Branch circuit conductors (4in, 4out)]

Thermal Protector

- Dedicated 120V Self-Resetting thermal sensor on J-box deactivates fixture if overheating occurs due to electrical issues, improper insulation, and/or high ambient temperatures.

LED Engine

- 1, 2, 3 or 4, 15W, 20W and 30W LED heads in 2700K-5000K color temperatures. Mounted on a heat sink and adjustable up to 35° (length) x 35° (width) and lockable into positions in multiple directions.
- Integrated high efficiency 120V direct driver on PC board (DOB) with a more than 90% power factor.
- Advanced driver circuit design (Pat. Pending) prevents damage to the LED module from common inrush currents.
- 10-100% triac dimmable with most of leading and trailing edge incandescent & low voltage dimmer switches with 120V input.
- Recommended for a maximum 20 fixtures per run on a 600W max max load per dimmer switch.

Mounting

- Designed for new construction mounting with channel bracket kit, provides 5" vertical adjustments and accommodates 1/2" EMT conduit. Options include HB-24 and HBC-24 bar hangers or lathing channels for T-bar grid or concealed spline ceilings.

Limited Warranty

- LED Module: 5 years/50K hours
- Product: 3 years

Listing

- cCSAus Damp Location

MCLC8

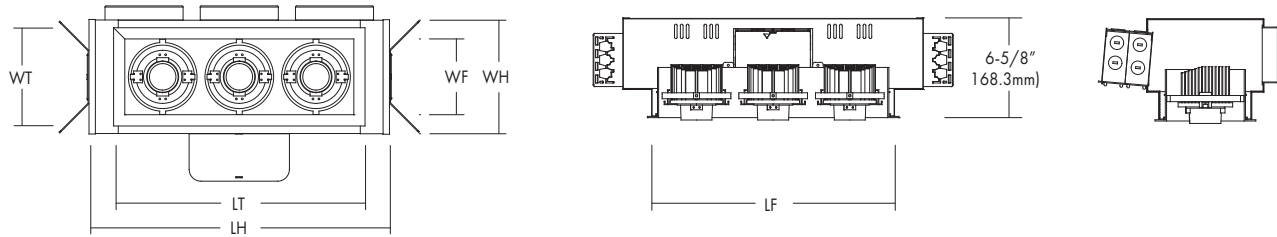
8" NON-IC

LED Retrofit and Remodeling downlight

15W, 20W, 30W & 40W LED, 120V ~ 277V Input

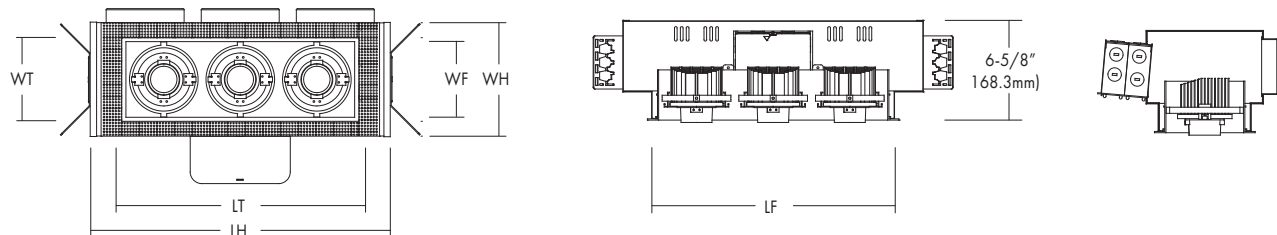
Catalog		Type
Project		Date
Prepared		

0.75" Trim Flange Dimension



No. of Lamps	Housing WH(Length) x LH(Width)	Trim WT(Length) x LT(Width)	Frame Opening WF(Length) x LF(Width)	Ceiling Cut-Out WC(Length) x LC(Width)
1LN	7-9/16" X 7-5/8" (192.5mm X 193.1mm)	6-9/16" X 6-9/16" (166.5mm X 166.5mm)	6-1/16" X 6-1/16" (154mm X 154mm)	6-1/4" X 6-1/4" (158.8mm X 158.8mm)
2LN	7-9/16" X 13-1/8" (192.5mm X 332.6mm)	6-9/16" X 11-11/16" (166.5mm X 296.5mm)	6-1/16" X 11-3/16" (154mm X 284mm)	6-1/4" X 11-3/8" (158.8mm X 288.9mm)
3LN	7-9/16" X 20-1/8" (192.5mm X 510.6mm)	6-9/16" X 16-13/16" (166.5mm X 426.5mm)	6-1/16" X 16-5/16" (154mm X 414mm)	6-1/4" X 16-1/2" (158.8mm X 419.1mm)
4LN	7-9/16" X 27-1/8" (192.5mm X 688.6mm)	6-9/16" X 21-15/16" (166.5mm X 556.5mm)	6-1/16" X 21-7/16" (154mm X 544mm)	6-1/4" X 21-5/8" (158.8mm X 549.3mm)

Trimless Demension



No. of Lamps	Housing WH(Length) x LH(Width)	Trim WT(Length) x LT(Width)	Frame Opening WF(Length) x LF(Width)	Ceiling Cut-Out WC(Length) x LC(Width)
1LN	7-9/16" X 7-5/8" (192.5mm X 193.1mm)	5-9/16" X 5-11/16" (142mm X 144mm)	6-1/16" X 6-1/16" (154mm X 154mm)	6-1/4" X 6-1/4" (158.8mm X 158.8mm)
2LN	7-9/16" X 13-1/8" (192.5mm X 332.6mm)	5-9/16" X 10-13/16" (142mm X 274mm)	6-1/16" X 11-3/16" (154mm X 284mm)	6-1/4" X 11-3/8" (158.8mm X 288.9mm)
3LN	7-9/16" X 20-1/8" (192.5mm X 510.6mm)	5-9/16" X 15-7/8" (142mm X 403mm)	6-1/16" X 16-5/16" (154mm X 414mm)	6-1/4" X 16-1/2" (158.8mm X 419.1mm)
4LN	7-9/16" X 27-1/8" (192.5mm X 688.6mm)	5-9/16" X 21" (142mm X 533mm)	6-1/16" X 21-7/16" (154mm X 544mm)	6-1/4" X 21-5/8" (158.8mm X 549.3mm)

MCLC8

8" NON-IC

LED Retrofit and Remodeling downlight

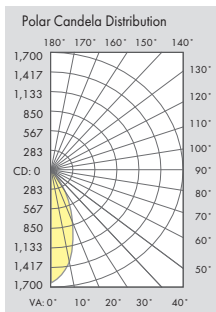
15W, 20W, 30W & 40W LED, 120V ~ 277V Input

Catalog		Type
Project		Date
Prepared		

Specification									
Wattage (+/-5%)		Type	Lumen (+/-5%)	Efficacy LPW (+/-5%)	Beam Angle	CRI (Typical)	Color (+/-5%)	Lamp Life	Input Voltage
15W	15.0	N	1,067	71.1	28°	90	3000K	5 yrs.	120V
	14.9	M	1,050	70.5	36°		3500K		
	14.9	W	1,075	72.2	60°		4000K		
20W	22.6	N	1,997	88.4	28°	90	3000K	5 yrs.	120V
	22.4	M	1,917	85.6	36°		3500K		
	22.4	W	1,926	86.0	60°		4000K		
30W	34.8	N	2,755	79.2	28°	90	3000K	5 yrs.	120V
	34.6	M	2,734	79.0	36°		3500K		
	34.4	W	2,716	79.0	60°		4000K		

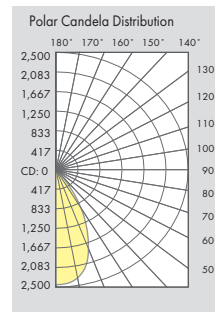
PHOTOMETRIC REPORT

* Contact Factory for IES File



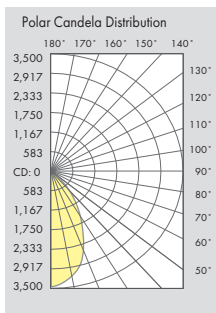
[MCLD-15W-Wide]

Illuminance at a Distance		Center Beam FC	Beam Width
2.0ft		405.6 fc	1.7 ft
4.0ft		101.4 fc	3.4 ft
6.0ft		45.1 fc	5.2 ft
8.0ft		25.4 fc	6.9 ft
10.0ft		16.2 fc	8.6 ft
12.0ft		11.3 fc	10.3 ft
		Beam Spread: 60°	



[MCLD-20W-Wide]

Illuminance at a Distance		Center Beam FC	Beam Width
2.0ft		614.5 fc	2.0 ft
4.0ft		153.6 fc	4.0 ft
6.0ft		68.3 fc	6.0 ft
8.0ft		38.4 fc	8.0 ft
10.0ft		24.6 fc	10.0 ft
12.0ft		17.1 fc	12.0 ft
		Beam Spread: 60°	



[MCLD-30W-Wide]

Illuminance at a Distance		Center Beam FC	Beam Width
2.0ft		865.2 fc	2.0 ft
4.0ft		216.3 fc	4.0 ft
6.0ft		96.1 fc	6.0 ft
8.0ft		54.1 fc	8.0 ft
10.0ft		34.6 fc	10.0 ft
12.0ft		24.0 fc	12.1 ft
		Beam Spread: 60°	

Ordering Information

Model	-No. of LED Heads	-Watts	-Color Temp.	*Beam Angle	Trim Insert	-Trim Interior Finish*	-Option
MCLD-DOB 120V, LED DoB Multiple Cluster Downlight	-1LN= (1) Light -2LN= (2) Light -3LN= (3) Light -4LN= (4) Light	-15= 15W -20= 20W -30= 30W	-27= 2700K -30= 3000K -35= 3500K -40= 4000K -50= 5000K	N = Narrow 28° M = Medium 36° W = Wide 60°	OL= 0.75" Trim Flange TL= Trimless	-WW= White with White Flange -BW= Black with White Flange -SW= Silver with White Flange	-SNT= Snoot -LVR= Louver -HCL= Hex Cell Louver -LSN= Linear Spread Lens -LNS= UV Lens -ML= Milk White Lens

Example : MCLD-DOB-1LN-15-30M

OL-BW-SNT

* Consult factory for other Color Temperatures and Finishes