

**ACRYLIC CANOE - LINEAR SURFACE**



**LED MODULE**

- Samsung LED
- 3000K, 3500K, 4000K • >80 CRI
- LN2 Minimum of 3000 delivered lumens at 22 watts
- LN4 Minimum of 6500 delivered lumens at 46 watts

**DRIVER OPTIONS**

Programmable driver (dim to 0%)  
\*Consult factory for other wattages

**CONSTRUCTION**

20 GA Steel with Integral Driver

**ELECTRICAL**

120-277V input power supply.

**LISTING**

UL for US and Canada. Suitable for damp location

**WARRANTY**

5 Year Full Warranty

**MOUNTING**

Surface

**ADDITIONAL OPTIONS**

Sensors

**BUILD YOUR PRODUCT**

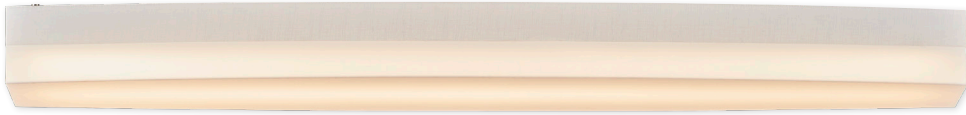
Grayed areas are codes for creating your lighting catalog #  
EXAMPLE CATALOG # **BOT-24L-S-LN2/LN2-30-8**

STYLE	SIZE	FINISH	LIGHT SOURCE	LIGHT SOURCE	COLOR TEMP.	CRI
<input type="checkbox"/> BOT	<input type="checkbox"/> 24L	<input type="checkbox"/> WH White <input type="checkbox"/> S Silver <input type="checkbox"/> B Black <input type="checkbox"/> Z Bronze	<input type="checkbox"/> LN2 2ft Linear Fixture	<input type="checkbox"/> LN2	<input type="checkbox"/> 30 3000 <input type="checkbox"/> 35 3500 <input type="checkbox"/> 40 4000	<input type="checkbox"/> 8 >80
<input type="checkbox"/> BOT	<input type="checkbox"/> 48L	<input type="checkbox"/> WH White <input type="checkbox"/> S Silver <input type="checkbox"/> B Black <input type="checkbox"/> Z Bronze	<input type="checkbox"/> LN4 4ft Linear Fixture	<input type="checkbox"/> LN4	<input type="checkbox"/> 30 3000 <input type="checkbox"/> 35 3500 <input type="checkbox"/> 40 4000	<input type="checkbox"/> 8 >80

**OPTIONAL EMERGENCY BACKUP (FIELD INSTALLED)**

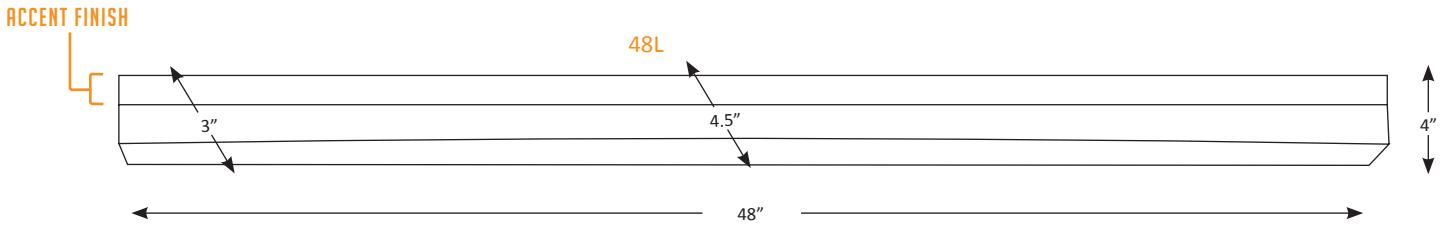
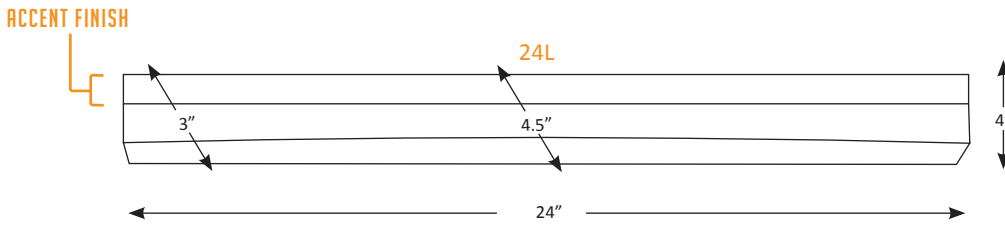
- CHA-EM-ITA Yes
- (blank) No

# ACRYLIC CANOE - LINEAR SURFACE



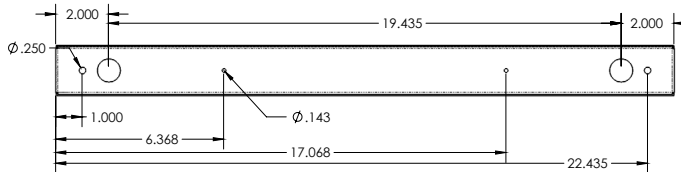
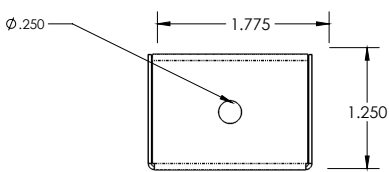
<b>LED MODULE</b>	<ul style="list-style-type: none"> <li>• Samsung LED</li> <li>• 3000K, 3500K, 4000K • &gt;80 CRI</li> <li>• LN2 Minimum of 3000 delivered lumens at 22 watts</li> <li>• LN4 Minimum of 6500 delivered lumens at 46 watts</li> </ul>
<b>DRIVER OPTIONS</b>	Programmable driver (dim to 0%) *Consult factory for other wattages
<b>CONSTRUCTION</b>	20 GA Steel with Integral Driver
<b>ELECTRICAL</b>	120-277V input power supply.
<b>LISTING</b>	UL for US and Canada. Suitable for damp location
<b>WARRANTY</b>	5 Year Full Warranty
<b>MOUNTING</b>	Surface
<b>ADDITIONAL OPTIONS</b>	Sensors

## ADDITIONAL SHADE DIMENSIONS

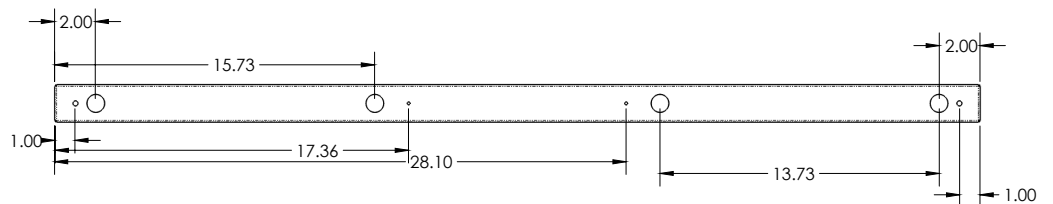
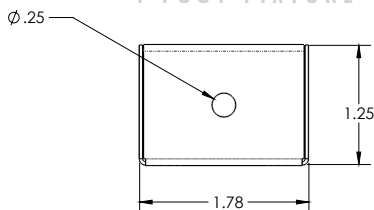


## LINE DRAWINGS OF LIGHT SOURCE

### 2 FOOT FIXTURE



### 4 FOOT FIXTURE



8 FOOT FIXTURE ALSO AVAILABLE - CONTACT FACTORY

\*\*\* Specifications subject to change without notice.