

**ACRYLIC MOON - LINEAR PENDANT**



**LED MODULE**

- Samsung LED
- 3000K, 3500K, 4000K • >80 CRI
- LN2 Minimum of 3000 delivered lumens at 22 watts
- LN4 Minimum of 6500 delivered lumens at 46 watts

**DRIVER OPTIONS**

Programmable driver (dim to 0%)  
\*Consult factory for other wattages

**CONSTRUCTION**

20 GA Steel with Integral Driver

**ELECTRICAL**

120-277V input power supply.

**LISTING**

UL for US and Canada. Suitable for damp location

**WARRANTY**

5 Year Full Warranty

**MOUNTING**

Stem (24" stem 45 degree swivel)  
Cable (120" adjustable aircraft cable)

**ADDITIONAL OPTIONS**

Sensors  
Joiner block

**BUILD YOUR PRODUCT**

Grayed areas are codes for creating your lighting catalog #  
EXAMPLE CATALOG # **MON-24L-S-LN2/LN2-30-8/SCK-LN-S**

STYLE	SIZE	FINISH	LIGHT SOURCE	LIGHT SOURCE	COLOR TEMP.	CRI
<input type="checkbox"/> MON	<input type="checkbox"/> 24L	<input type="checkbox"/> WH White <input type="checkbox"/> S Silver <input type="checkbox"/> B Black <input type="checkbox"/> Z Bronze	<input type="checkbox"/> LN2 2ft Linear Fixture	<input type="checkbox"/> LN2	<input type="checkbox"/> 30 3000 <input type="checkbox"/> 35 3500 <input type="checkbox"/> 40 4000	<input type="checkbox"/> 8 >80
<input type="checkbox"/> MON	<input type="checkbox"/> 48L	<input type="checkbox"/> WH White <input type="checkbox"/> S Silver <input type="checkbox"/> B Black <input type="checkbox"/> Z Bronze	<input type="checkbox"/> LN4 4ft Linear Fixture	<input type="checkbox"/> LN4	<input type="checkbox"/> 30 3000 <input type="checkbox"/> 35 3500 <input type="checkbox"/> 40 4000	<input type="checkbox"/> 8 >80

MOUNTING		FINISH	ADDITIONAL OPTIONS	
<input type="checkbox"/> SCK-LN	Stem Kit	<input type="checkbox"/> S Silver	<input type="checkbox"/> CHA-EM-ITA	Emergency Back Up**
<input type="checkbox"/> CCK-LN-F/NF	Cable Kit (F=FEED NF=NON-FEED)	<input type="checkbox"/> B Black	<input type="checkbox"/> SPL-BOX-W	Splice box for joining fixtures
		<input type="checkbox"/> W White	<input type="checkbox"/> (blank)	No

\*\*field installed

# ACRYLIC MOON - LINEAR PENDANT



### LED MODULE

- Samsung LED
- 3000K, 3500K, 4000K • >80 CRI
- LN2 Minimum of 3000 delivered lumens at 22 watts
- LN4 Minimum of 6500 delivered lumens at 46 watts

### DRIVER OPTIONS

Programmable driver (dim to 0%)  
\*Consult factory for other wattages

### CONSTRUCTION

20 GA Steel with Integral Driver

### ELECTRICAL

120-277V input power supply.

### LISTING

UL for US and Canada. Suitable for damp location

### WARRANTY

5 Year Full Warranty

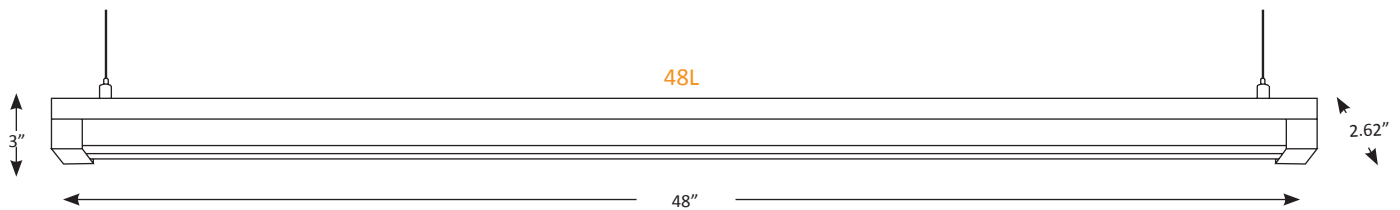
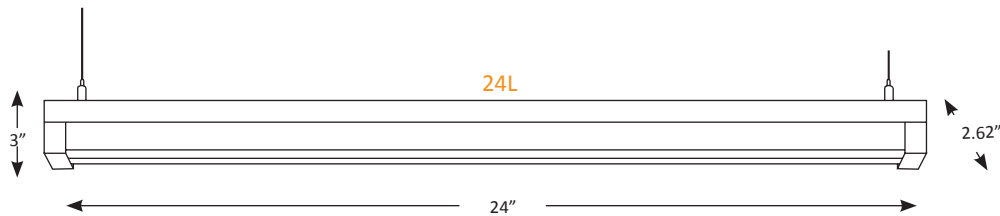
### MOUNTING

Stem (24" stem 45 degree swivel)  
Cable (120" adjustable aircraft cable)

### ADDITIONAL OPTIONS

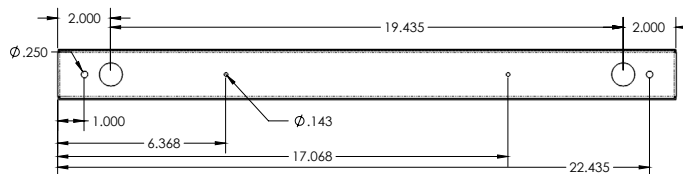
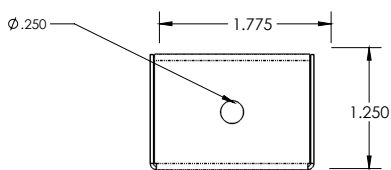
Sensors  
Joiner block

## ADDITIONAL SHADE DIMENSIONS

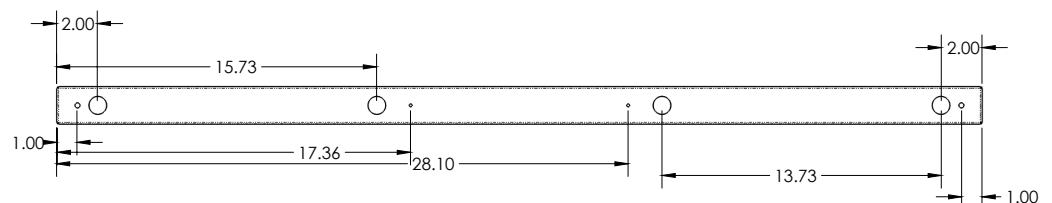
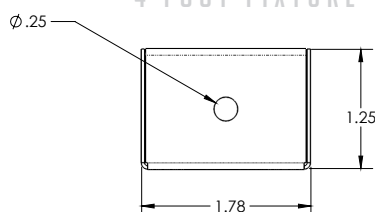


## LINE DRAWINGS OF LIGHT SOURCE

### 2 FOOT FIXTURE



### 4 FOOT FIXTURE



8 FOOT FIXTURE ALSO AVAILABLE - CONTACT FACTORY

\*\*\* Specifications subject to change without notice.