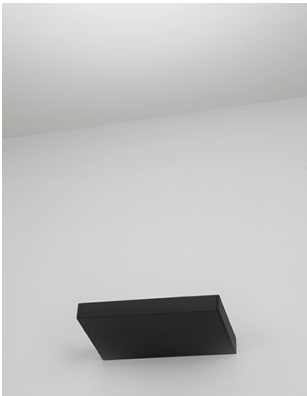


Date: _____ Customer: _____

Project: _____

Type: _____ Qty: _____



Throughout a series of extremely simple forms that perfectly dialogue with each other, Onn mainly features indirect lighting. It offers various possibilities to interact with architecture.

Onn-Wall 165 and 300 represent another innovative step towards efficient directional LED lighting. The new Onn-Wall luminaire benefit from the photometric advantages of the latest TIR lenses (total internal reflection). Onn-Wall with a 'forward throw' light distribution eliminates the tradition hot spot on the wall surface and creates a homogeneous light distribution on the ceiling.

Construction

Luminaire

Made from aluminum extruded, cataphoretically painted.

Finishes

- White (RAL 9016)
- Black (RAL 9004)

Mounting

Surface mounting with spackle over junction box canopy for trimless installation.

Electrical Characteristics

LED Specification

Cree LED.

LED Life

L80 greater than 50,000 hours.

Correlated Color

Temperature (CCT)

- Available in 2700.
- CRI 80+

Gear

Standard universal voltage 120V driver with on/off function (no dimming).
Optional 0-10V dimming (120V only). Consult factory for custom options.



Ordering Codes

KUOW___ -	___ -	___ -	80 -	___ -	D1
KREON ONN-WALL	SIZE (WIDTH)	LIGHT SOURCE AND CCT*	CRI	FINISH COLOR*	DIMMING
Square aperture	165 mm – 6.5" 300 mm – 12"	27 – 2700K	80 – 80+ min CRI	WHT – White BLK – Black	D0 – ON/OFF, 120V only D2 – 0-10V dim, 120V only

Ordering Example: **KUOW-165-27-80-WHT-D0**

* Consult factory for other options

Photometry — For full photometry, please reference IES files on www.kreon.com

KUOW-165-27-80-WHT-D0

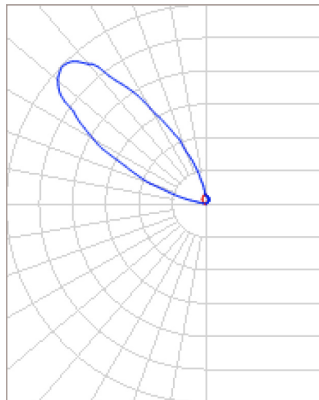
Light Engine: 900lm

CCT: 2700K

CRI: 80+

Power: 8.6W

Luminaire Output:
629 lumens (73 lm/W)



KUOW-300-27-80-BLK-D0

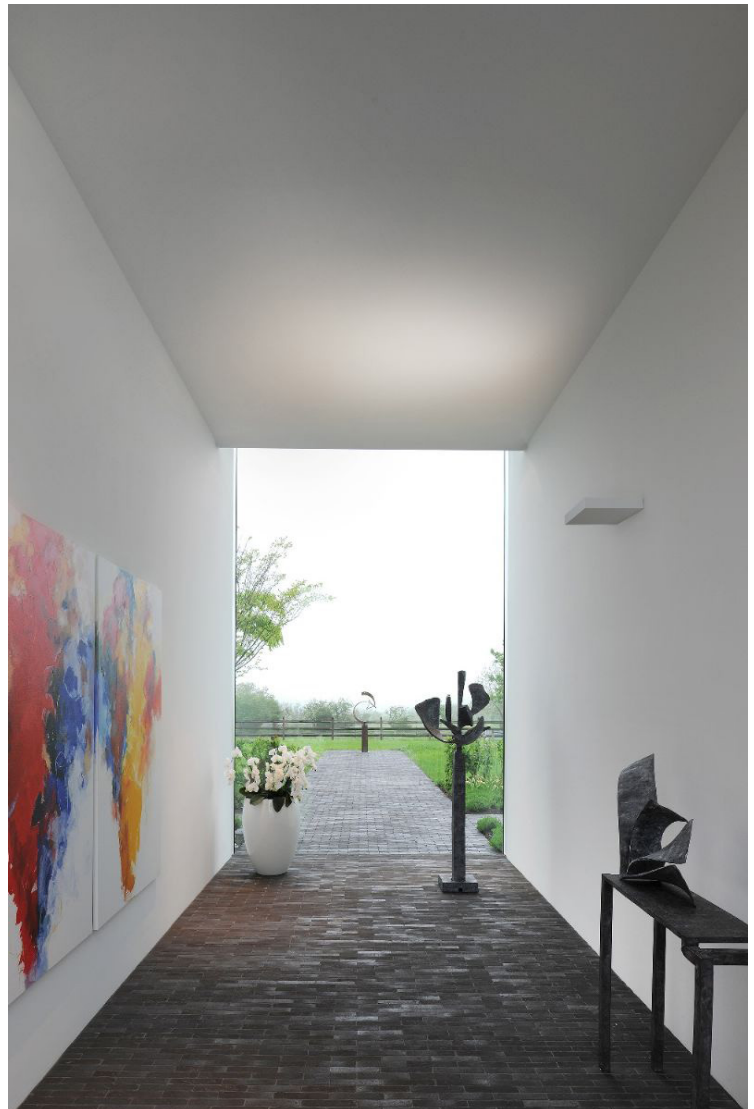
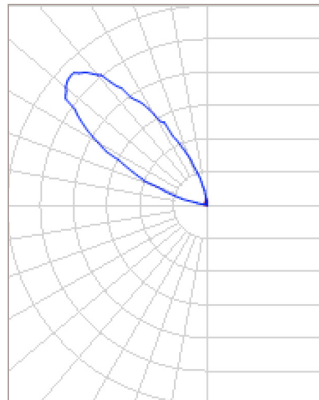
Light Engine: 1800lm

CCT: 2700K

CRI: 80+

Power: 17.2W

Luminaire Output:
1258 lumens (73 lm/W)

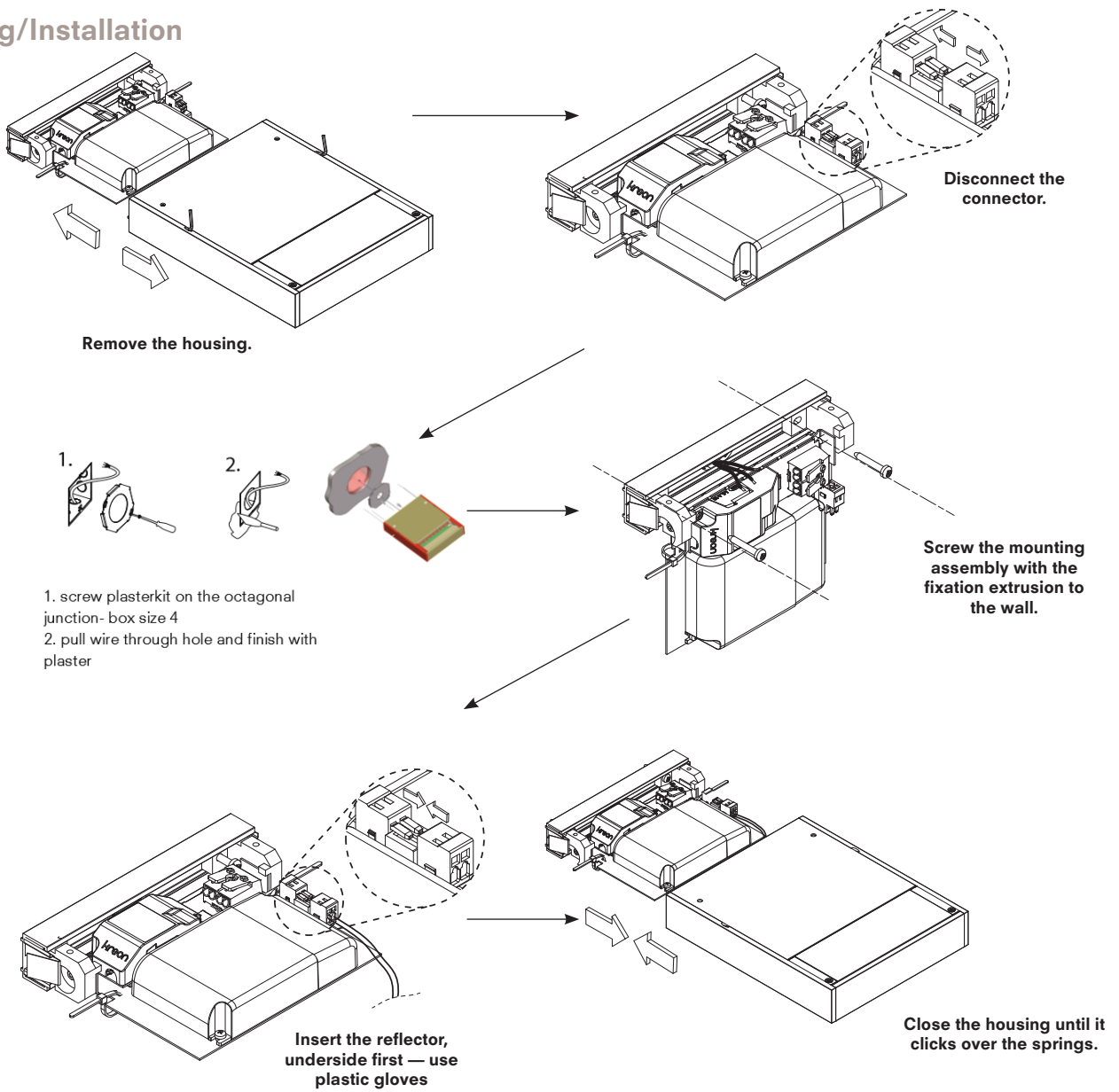


Onn-Wall luminaires are ETL listed for dry and damp locations.
Onn-Wall luminaires lend support for LEED credits and certification.

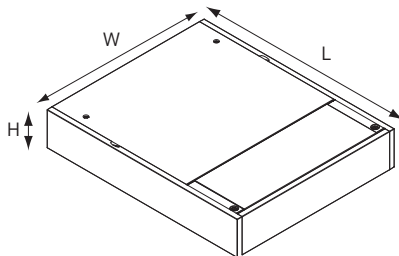
Onn-Wall – Indirect Wall Mounted Luminaire

kreon

Mounting/Installation



Dimensions



	W	L	H
Onn-Wall 165	6 1/2" (165)	7 7/8" (201)	1 3/8" (35)
Onn-Wall 300	11 13/15" (300)	7 7/8" (201)	1 3/8" (35)



Onn-Wall luminaires are ETL listed for dry and damp locations.
Onn-Wall luminaires lend support for LEED credits and certification.