

# Raga – Horizontal / Vertical Exterior Bollard

kreon

Date: \_\_\_\_\_ Customer: \_\_\_\_\_

Project: \_\_\_\_\_

Type: \_\_\_\_\_ Qty: \_\_\_\_\_



kreon raga is an exterior bollard luminaire with a simple, timeless form that is complimented by a choice of stone or steel material finishes that define its personality. The units are sealed to IP65 and are fitted with warm LEDs to provide an attractive surrounding glow.

## Construction

### Luminaire

Made from high-pressure die cast aluminum. Surface treatment by powder-coated.

### Stone/Steel Finish

- Nero marquina
- Metal Black
- Carrara bianco

### Mounting Option

- Horizontal or Vertical
- Surface mounted luminaire for floors

### Classifications

- Ingress Protection – IP66 (horizontal) and IP65 (vertical)

## Electrical Characteristics

### LED Specification

- LED.

### LED Life

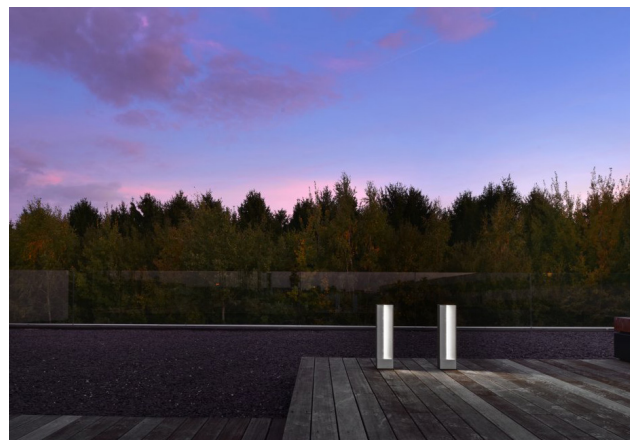
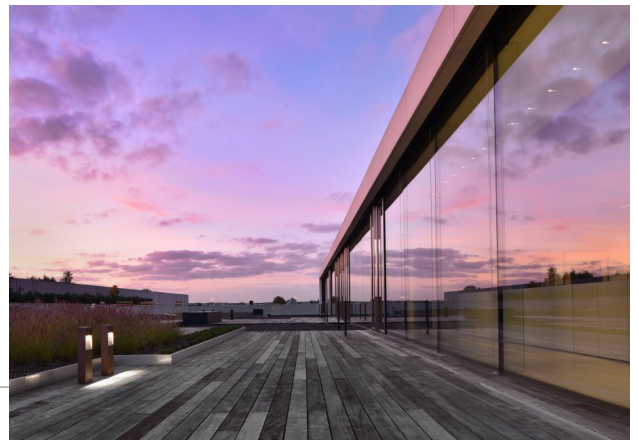
- Up to 12W

### Correlated Color Temperature (CCT)

- Available in 2700K.
- CRI 80+

### Gear

Standard 120V driver with on/off function (no dimming). Consult factory for TRIAC phase dim or 0-10V dim.



## Ordering Codes

KU__ -	27 -	80 -	_____ -	_____ -	INT -	_____ -
KREON RAGA	LIGHT SOURCE AND CCT*	CRI	STONE / STEEL FINISH	FRAME FINISH*	ELECTRIC GEAR	OPTIONAL ACCESSORIES
<b>RH</b> – Horizontal <b>RV</b> – Vertical	<b>27</b> – 2700K	<b>80</b> – 80+ min CRI	<b>NM</b> – Nero marquina marble <b>BLK</b> – Metal black <b>CB</b> – Carrara bianco marble	<b>BFF</b> – High gloss black frame finishing <b>BSS</b> – Brushed stainless steel frame finishing <b>BRC</b> – Brushed red copper frame finishing	<b>INT</b> – Integral 120V	<b>CP</b> – Concrete pouring mould

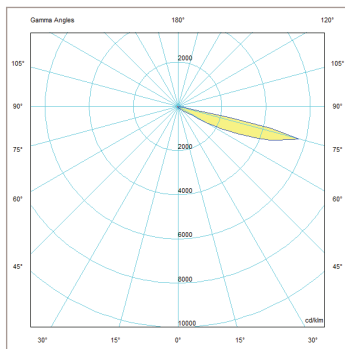
Ordering Example: KURV-27-80-NM-BRC-INT-CP

\* Consult factory for other options

## Photometry — For full photometry, please reference IES files on [www.kreon.com](http://www.kreon.com)

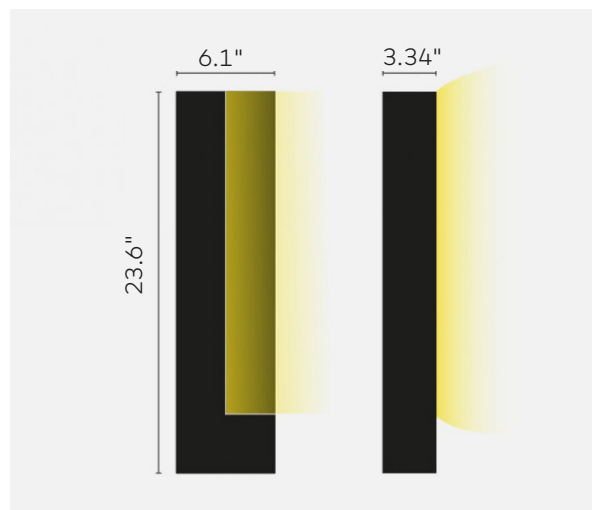
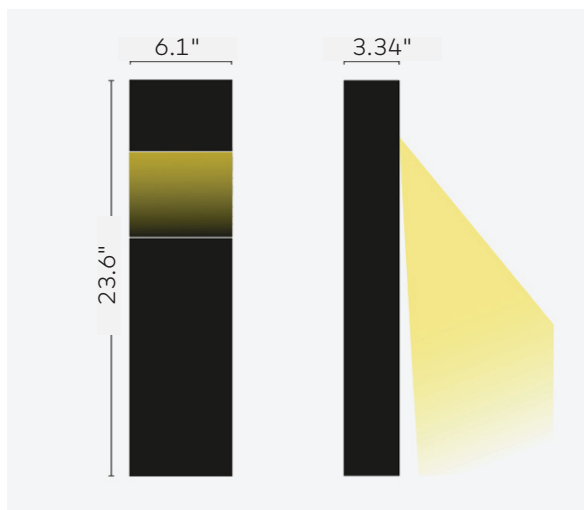
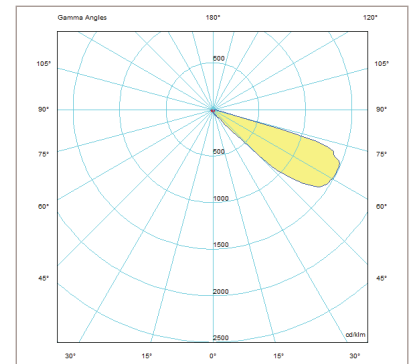
### KURH-27-80-BLK-INT (no accessories)

Source Lumens: 540 lumens  
Maximum Candela: 5649.59  
CCT: 2700K  
CRI: 80+  
Power: 12W  
  
Luminaire Output:  
540 lumens (45 lm/W)

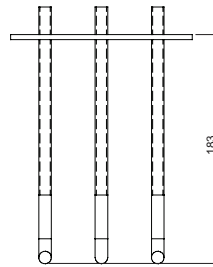
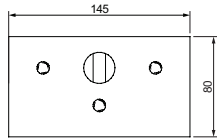
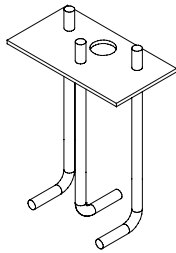


### KURV-27-80-BLK-INT (no accessories)

Source Lumens: 85 lumens  
Maximum Candela: 1489.06  
CCT: 2700K  
CRI: 80+  
Power: 5W  
  
Luminaire Output:  
85 lumens (17 lm/W)

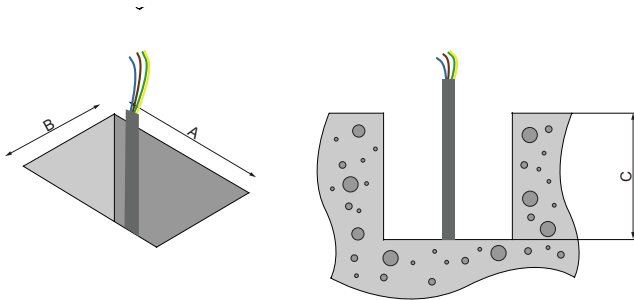


## Mounting/Installation

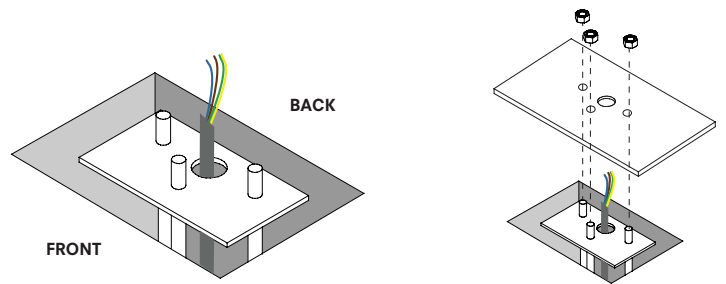


1. Raga Concrete Anchor

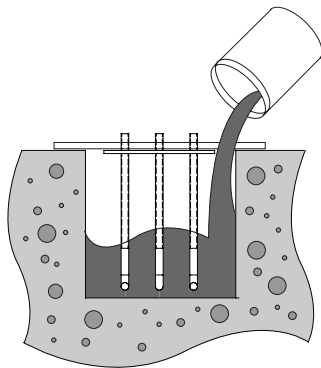
2. Make sure main voltage is disconnected before proceeding



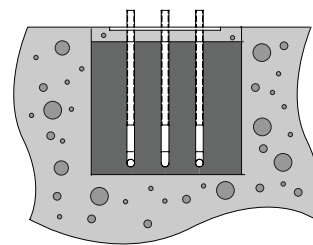
3. Make a hole with following minimum dimensions:  $A_{min}=155$   $B_{min}=90$   $C_{min}=183$  Provide 120v power supply and earthing cable



4. Place anchor in hole, mind the orientation. Pull cables through the opening. Make a plate (provided by others) and attach it to the anchor so it can be correctly positioned and stays in place.



5. Make sure the top surface of the anchor is flush with the ground. Make sure the anchor is leveled. Pour concrete.



6. Fill up hole with ground material.