

# UHA-60386

## Harrier 1 Ingrade

### Construction

#### Aluminum

Less than 0.1% copper content – Marine Grade 6060 extruded & LM6 Aluminum High Pressure die casting provides excellent mechanical strength, clean detailed product lines and excellent heat dissipation.

#### Pre paint

8 step degrease and phosphate process that includes deoxidizing and etching as well as a zinc and nickel phosphate process before product painting.

#### Memory Retentive -Silicon Gasket

Provided with special injection molded “fit for purpose” long life high temperature memory retentive silicon gaskets. Maintains the gaskets exact profile and seal over years of use and compression.

#### Thermal management

LM6 Aluminum is used for its excellent mechanical strength and thermal dissipation properties in low and high ambient temperatures. The superior thermal heat sink design by Ligman used in conjunction with the driver, controls thermals below critical temperature range to ensure maximum luminous flux output, as well as providing long LED service life and ensuring less than 10% lumen depreciation at 50,000 hours.

#### Surge Suppression

Standard 10kv surge suppressor provided with all fixtures.

#### BUG Rating

B2 - U3 - G4

#### Finishing

All Ligman products go through an extensive finishing process that includes fettling to improve paint adherence.

#### Paint

UV Stabilized 4.9Mil thick powder coat paint and baked at 200 Deg C. This process ensures that Ligman products can withstand harsh environments. Rated for use in natatoriums.

#### Hardware

Provided Hardware is Marine grade 316 Stainless steel.

#### Anti Seize Screw Holes

Tapped holes are infused with a special anti seize compound designed to prevent seizure of threaded connections, due to electrolysis from heat, corrosive atmospheres and moisture.

#### Crystal Clear Low Iron Glass Lens

Provided with tempered, impact resistant crystal clear low iron glass ensuring no green tinge.

#### Optics & LED

Precise optic design provides exceptional light control and precise distribution of light. LED CRI > 80

#### Lumen - Maintenance Life

L80 /B10 at 50,000 hours (This means that at least 90% of the LED still achieve 80% of their original flux)

**Complete, flexible, competitive accent and floodlight ingrounds. The lighting industry's leading quality low-cost inground fixture family.**

A top range of inground uplights with a choice of round or square stainless steel or painted aluminum front rings. This 4.7" inground luminaire is suitable as a marker light for illuminating shopping and pedestrian areas, parks, gardens and sculptures. This low glare luminaire is provided with a 0.4" thick tempered glass and is rated as a walkover luminaire. The glass has a special wrap around high temperature silicone gasket that provides additional ingress protection.

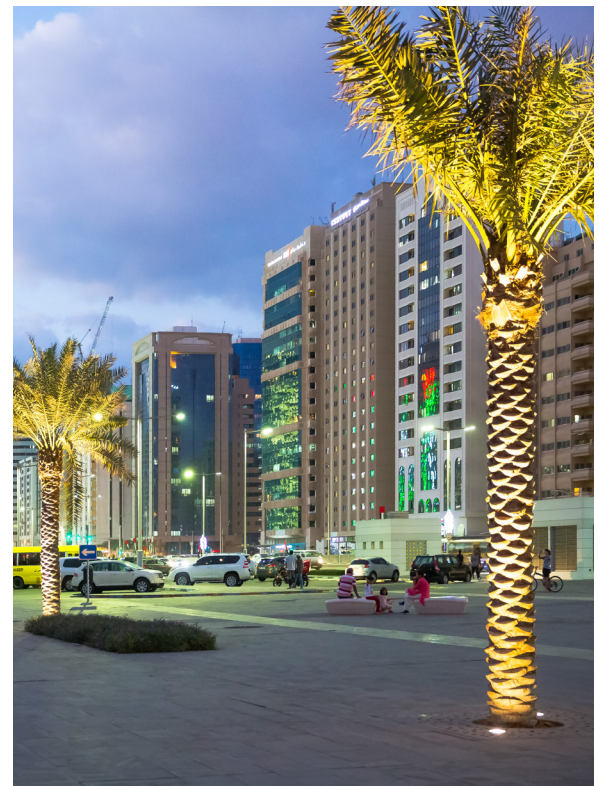
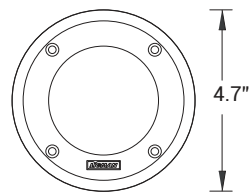
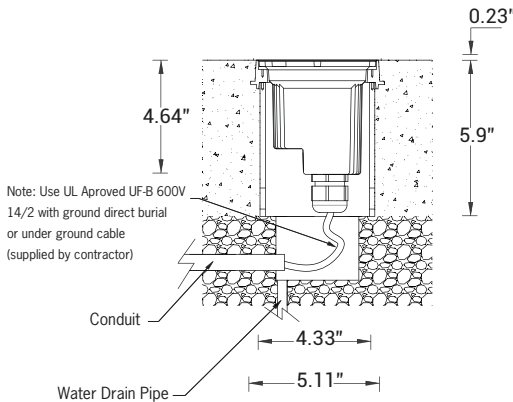
To ensure efficient drainage, gravel must be used to a depth of 17" beneath the housing, and should also be placed around the luminaire. Low copper content die-cast aluminum housing with high corrosion resistance. The 0.24" thick front ring is available in grade 316 stainless steel or aluminum.

Stainless steel fasteners in grade 316. Power is provided by contractor. Gland provided by Ligman for UF-B 600v underground feeder cable is recommended to provide power to the luminaire. Standard recessing box in high density polyethylene.

NOTE: Includes remote mount driver, recessing box & remote enclosure box.



8w LED 555 Lumens  
IP67 • Suitable For Wet Locations  
IK10 • Impact Resistant (Vandal Resistant)  
Weight 1.1 lbs (A) 1.5 lbs (S)



# UHA-60386

Harrier 1 Ingrade

<b>PROJECT</b>		<b>DATE</b>	
----------------	--	-------------	--

<b>QUANTITY</b>		<b>TYPE</b>		<b>NOTE</b>	
-----------------	--	-------------	--	-------------	--

ORDERING EXAMPLE || UHA-60386-8w - VN - W30- 120/277v

<b>UHA-60386</b>																					
<b>LAMP</b>	<b>FRAME</b>	<b>BEAM</b>	<b>LED COLOR</b>	<b>FINISH COLOR</b>		<b>VOLTAGE</b>															
8w LED 555 Lumens	A - Aluminum - CHOOSE FINISH COLOR S - Stainless Steel NO FINISH COLOR	VN - Very Narrow 8°	W27 - 2700K W30 - 3000K W35 - 3500K W40 - 4000K	<table style="width: 100%; border-collapse: collapse;"> <tr> <td style="width: 20px;">01 - BLACK RAL 9011</td> <td></td> <td rowspan="7" style="vertical-align: middle; padding-left: 10px;">120/277v Other - Specify</td> </tr> <tr> <td>02 - DARK GREY RAL 7043</td> <td></td> </tr> <tr> <td>03 - WHITE RAL 9003</td> <td></td> </tr> <tr> <td>04 - METALLIC SILVER RAL 9006</td> <td></td> </tr> <tr> <td>05 - MATTE SILVER RAL 9006</td> <td></td> </tr> <tr> <td>06 - LIGMAN BRONZE</td> <td></td> </tr> <tr> <td>07 - CUSTOM RAL</td> <td></td> </tr> </table>		01 - BLACK RAL 9011		120/277v Other - Specify	02 - DARK GREY RAL 7043		03 - WHITE RAL 9003		04 - METALLIC SILVER RAL 9006		05 - MATTE SILVER RAL 9006		06 - LIGMAN BRONZE		07 - CUSTOM RAL		
01 - BLACK RAL 9011		120/277v Other - Specify																			
02 - DARK GREY RAL 7043																					
03 - WHITE RAL 9003																					
04 - METALLIC SILVER RAL 9006																					
05 - MATTE SILVER RAL 9006																					
06 - LIGMAN BRONZE																					
07 - CUSTOM RAL																					

--	--	--	--

## ADDITIONAL OPTIONS

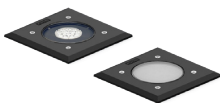
- |                        |                           |
|------------------------|---------------------------|
| DIM - 0-10v Dimming    | A60121 - Honeycomb Louvre |
| F - Frosted Lens       | ADA - Anti Slip Lens      |
| NAT - Natatorium Rated |                           |

# Harrier Product Family



Harrier 1

- UHA-60036-6w-291lm
- UHA-60385-8w-733lm
- UHA-60386-8w-555lm



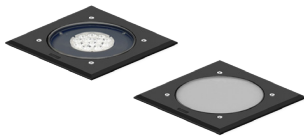
Harrier 2

- UHA-60196-6w-291lm
- UHA-60395-8w-733lm
- UHA-60396-8w-555lm



Harrier 3

- UHA-60049-15w-1468lm
- UHA-60050-29w-2899lm
- UHA-60295-6w-410lm
- UHA-60296-33w-3187lm



Harrier 4

- UHA-60209-15w-1468lm
- UHA-60215-29w-2899lm
- UHA-60305-6w-410lm
- UHA-60306-33w-3187lm