

# P8080 Series

LED New Construction and Remodel • Wet Location



## Specifications:

### Description:

The P8080 is ideal for use in both new construction as well as remodel/retrofit. Light output is comparable to that of a typical 50W incandescent downlight, providing up to 75% energy savings. The P8080 is equipped with both Edison base adaptor and quick link connector allowing easy installation in many standard incandescent recessed housings.

### Construction:

- Diffused polycarbonate lens controls direct glare from the LEDs
- Easy "Push and Twist" installation with (3) friction spring clips
- Can be installed in most competitors 4" recessed housings
- Dimmable to 10% with many electronic low voltage dimmers
- Lumen output and distribution comparable to a 50W incandescent lamp
- Suitable for use in IC or NON-IC Applications with 25°C (77°F) continuous room side ambient temperature.
- Provided with quick link for use with E26 Edison Base adapter
- This product is not available for sale into the State of California.

### Performance:

Input Power	10.5W
Input Voltage	120V
Input Frequency	60Hz
Lumens	604 (LM-79)
CCT	3000K
CRI	90+
LPW	57.5
Life	60,000 (L70/TM-21)
EMI/RFI	FCC Title 47, Part 15, Class B
Min. Start Temp	-30° C
Max. Operating Temp	30° C
Warranty	5 yrs.
Labels	cCSAus classified for wet locations

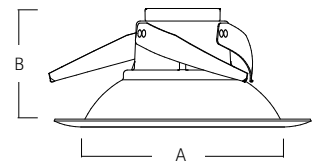
## P8080 SERIES

### Images:

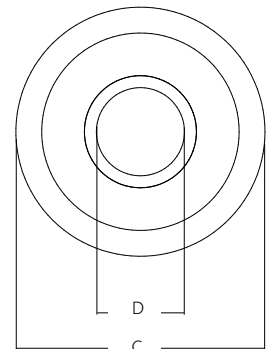


### Dimensions:

A	B
4"	3.25"



C	D
5"	2.75"



### Catalog number:

Base	Finish	Color Temp	CRI	Voltage	Lumen Package
<b>P8080</b>	<b>20</b> - Bronze <b>28</b> - White <b>31</b> - Black <b>82</b> - Metallic Gray	<b>30K</b> - 3000K	<b>9</b> - 90+	<b>AC1</b> - 120V	<b>L06</b> - 604 Lumens

**Photometrics:**

## P8080 SERIES

**ELECTRICAL DATA P8080**

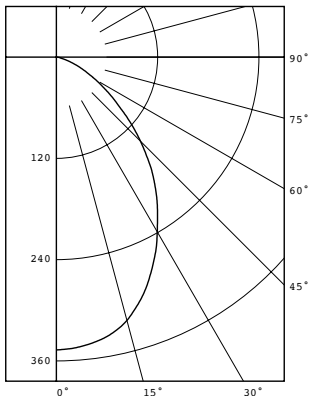
Input Voltage	120V
Input Frequency	57-63 Hz
Input Current	0.09A
Input Power	10.5W
Power Factor	>0.90
THD	<20%
EMI Filtering	FCC 47CFR Part 15, Class B
Operating Temperature	-30°C to 60°C
Dimming	Yes*

Over-voltage, over-current, short-circuit protected  
\*See Dimming Notes for more information

**PERFORMANCE DATA CHART**

Single Unit, Initial Footcandles, 30" Work Plane						Ceiling to Floor Height (ft)	Multiple Units, Initial Footcandles, 30" Work Plane				
Nadir		10°		20°			Spacing is Maximum Over Work Plane, SMH = 1.1				
FC	FC	Dia (ft)	FC	Dia (ft)	FC		Dia (ft)	FC	RCR 2	RCR 5	RCR 7
28	26	1	20	3	13	4	<b>6</b>	4.0	40	29	24
11	11	2	8	4	5	6	<b>8</b>	6.0	16	12	10
5	5	3	4	6	2	9	<b>10.5</b>	9.0	8	6	5
4	4	3	3	7	2	11	<b>12</b>	10.0	5	4	3

**P8080-28/30K9-AC1-L06**  
 LED Light Engine: 3000K 90 CRI  
 System Wattage: 10.5  
 Fixture delivered lumens: 604  
 Fixture Efficacy: 57.5  
 Spacing Criteria: 1.1



**CANDELA DISTRIBUTION**

DEG	CANDELA
0	347
5	344
15	323
25	271
35	208
45	141
55	78
65	35
75	9
85	2
90	0

**ZONAL LUMEN SUMMARY**

ZONE	LUMENS	%FIXT
0-30	248	41.0
0-40	377	62.4
0-60	556	92.0
0-90	604	100.0

Test No. 2767673-3 14.00385  
 Tested at 25°C Ambient in accordance to IESNA LM-79-2008

## P8080 SERIES

### Dimming Notes:

P8080 is designed to be compatible with many Electronic Low Voltage (ELV-Reverse Phase) controls. LED rated dimmer controls may offer favorable dimming performance. The following is a partial list of known compatible dimmer controls:

### Electronic Low Voltage ELV Reverse Phase Controls

Leviton	Renoir II	AWRMG-EAW
Lutron	Diva Series	(Part Number DVELV-300P)
Lutron	Maestro Series	(Part Number MAELV-600)
Lutron	Nova T Series	(Part Number NTELV-300)
Lutron	Spacer Series	(Part Number SPSELV-600)
Lutron	Vierti Series	(Part Number VTELV-600)

### LED Rated Controls

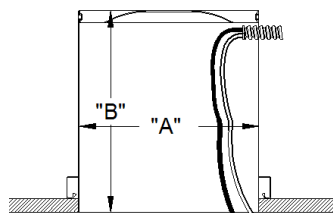
Pass & Seymour	(Part Number DCL453PTCCCV6)
----------------	-----------------------------

Digital type dimmers are not recommended.  
 Dimming capabilities will vary depending on the dimmer control, load, and circuit installation. Always refer to dimmer manufacturer instructions or a controls specialist for specific requirements.  
 Dimmer control brand names where identified above are trade names or registered trademarks of each respective company.

### Compatibility of 4" Recessed Housings:

The P8080's are cCSAus classified for use with Progress and most competitive recessed cans (with "A" and "B" dimensions) including:

- Progress
- Capri
- Commercial Electric
- Elco
- Emerald
- Halo
- Intense
- Jimway
- Juno
- Nora
- Prescolite



"A" = 4-5/16" MIN. 5-1/8" MAX.  
 "B" = 3-1/2" MIN.

### NOTES

1. Operation in ambient temperatures higher than those specified will shorten life.
2. Warranty is limited to repair and replacement of defective parts of the LED system and does not include labor or installation. 5 year warranty requires product registration. Contact Technical Support for details.