

# P8071 Series

6" LED New Construction and Remodel • Wet Location



## Specifications:

### Description:

The P8071 is ideal for use in both new construction as well as remodel/retrofit. Light output is comparable to that of a typical 65W incandescent downlight, providing up to 75% energy savings. The P8071 is equipped with both Edison base adaptor and quick link connector allowing easy installation in many standard incandescent recessed housings.

### Construction:

- Diffused polycarbonate lens controls direct glare from the LEDs
- Easy "Push and Twist" installation with (3) friction spring clips
- Can be installed in most competitors 6" recessed housings
- Dimmable to 10% with many electronic low voltage dimmers
- Lumen output and distribution comparable to a 65W incandescent lamp
- Suitable for use in IC or NON-IC Applications with 25°C (77°F) continuous room side ambient temperature.
- Provided with quick link for use with E26 Edison Base adapter
- This product is not available for sale into the State of California.

### Performance:

Input Power	13W
Input Voltage	120V
Input Frequency	60Hz
Lumens	702/55 (LM-79)
CCT	3000K
CRI	90+
LPW	55
Life	60,000 (L70/TM-21)
EMI/RFI	FCC Title 47, Part 15, Class B
Min. Start Temp	-30° C
Max. Operating Temp	30° C
Warranty	5 yrs.
Labels	cCSAus classified for wet locations ENERGY STAR® qualified (-28 white only)

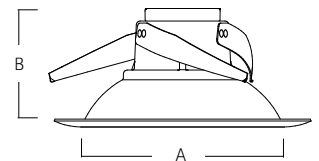
## P8071-28/30K9-AC1-L07

### Images:

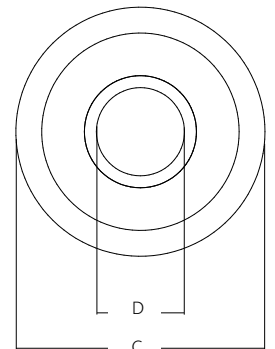


### Dimensions:

A	B
6.125"	4"



C	D
7.75"	2.75"



### Catalog number:

Base	Finish	Color Temp	CRI	Voltage	Lumen Package
P8071	20 - Bronze 28 - White 31 - Black 82 - Metallic Gray	30K - 3000K	9 - 90+	AC1 - 120V	L07 - 702 Lumens



# P8071 Series

6" LED New Construction and Remodel • Wet Location

PROGRESS **LED**



Photometrics:

---

**P8071-28/30K9-AC1-L07**

## P8071-28/30K9-AC1-L07

### Dimming Notes:

P8071 is designed to be compatible with many Electronic Low Voltage (ELV-Reverse Phase) controls. LED rated dimmer controls may offer favorable dimming performance. The following is a partial list of known compatible dimmer controls:

### Electronic Low Voltage ELV Reverse Phase Controls

Leviton	Renoir II	AWRMG-EAW
Lutron	Diva Series	(Part Number DVELV-300)
Lutron	Maestro Series	(Part Number MAELV-600)
Lutron	Nova T Series	(Part Number NTELV-300)
Lutron	Spacer Series	(Part Number SPSELV-600)
Lutron	Vierti Series	(Part Number VTELV-600)

### LED Rated Controls

Pass & Seymour	(Part Number DCL453PTCCCV6)
----------------	-----------------------------

Incandescent Digital type dimmers are not recommended.

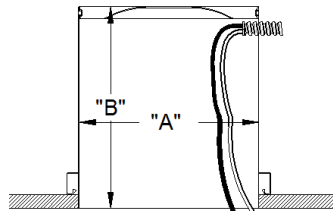
Dimming capabilities will vary depending on the dimmer control, load, and circuit installation. Always refer to dimmer manufacturer instructions or a controls specialist for specific requirements.

Dimmer control brand names where identified above are trade names or registered trademarks of each respective company.

### Compatibility of 6" Recessed Housings:

The P8071's are cCSAus classified for use with Progress and most competitive recessed cans (with "A" and "B" dimensions) including:

<b>Progress</b>	
Capri	Lithonia
Commercial Electric	Lumapro
Elco	Luminaire
Emerald	Nora
Halo	Progress
Intense	Sea Gull
Jimway	WAC
Juno	Prescolite



"A" = 6 5/16 MIN. 7 1/8 MAX  
 "B" = 5 1/2 MIN.

### NOTES

1. Operation in ambient temperatures higher than those specified will shorten life.
2. Warranty is limited to repair and replacement of defective parts of the LED system and does not include labor or installation. Contact Technical Support for details.