

CMBL-150i/CMBL-150i-GFCI

LED Bollard . CMBL Series



Product Features

- 4W or 8W rectangular bollard with wide directional light pattern.
- Lighting portion of fixture is ETL wet location listed for outdoor use.
- GFCI power outlet portion is wet location listed for outdoor use while cover is closed.
- Built with corrosion resistant aluminum extrusion.
- Optional convenient 120V outlet with GFCI.
- Available in turtle friendly AMBER model.



Specification

Materials:

Housing: Extrusion of silicone magnesium aluminum alloy (6061-T6) resistant to corrosion.
Hardware: Stainless Steel 304.

Voltage: 120V AC with integral LED driver.

Wattage: 4 or 8W HK LED. 5W AMBER LED.

Light Source: CRI 83. Available in CRI95 upon request. The chromaticity range is within a 3-step MacAdam Ellipse. Standard CCT options are 2700K, 3000K, 4000K.

Dimmability: Non-dimmable.

Finish: Polyester powder coat on all aluminum materials with RoHS compliant procedures. Anodized finish is available.

Optical Accessories: Standard with Solite soft focus lens for feathered-out and even light spread.

Optional Convenient Power Outlet: Available with built-in GFCI power outlet. GFCI cover is wet location listed when cover is closed.

Anchor Bolt Size: 5/16" or 3/8", supplied by others.

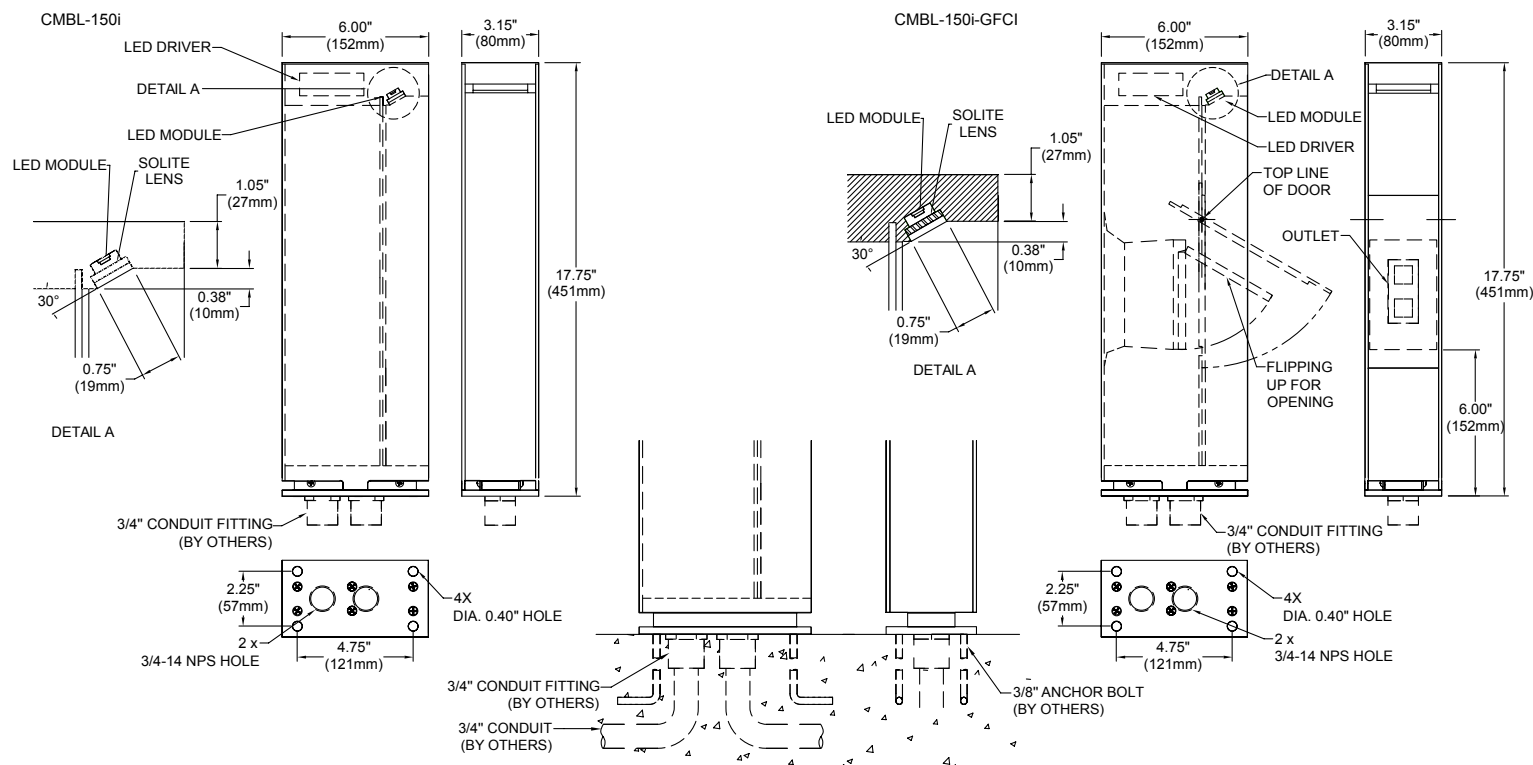
Ordering Guide

EXAMPLE: CMBL-150i-GFCI - 120V - 4 - 27 - ABK
CMBL-150i - 120V - 4 - 27 - ABK

SERIES	VOLTAGE	WATTAGE	CCT	FINISH
CMBL-150i	120V	4 8	4W 8W	27 2700K 30 3000K 40 4000K
CMBL-150i-GFCI		AMB 5W	AMBER	Standard BK Black Powder Coat BZ Bronze Powder Coat WT White Powder Coat Premium ABK Anodized Black ACL Anodized Clear CC Custom Powder Coat

Product Drawings

NOTE: Specification and dimensions subject to change without notice.

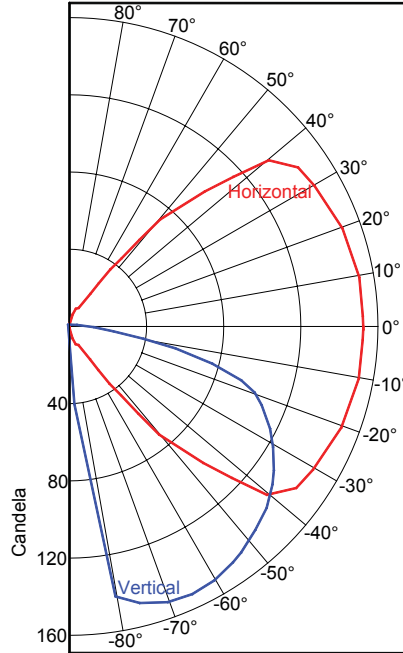


Photometry & Energy Data

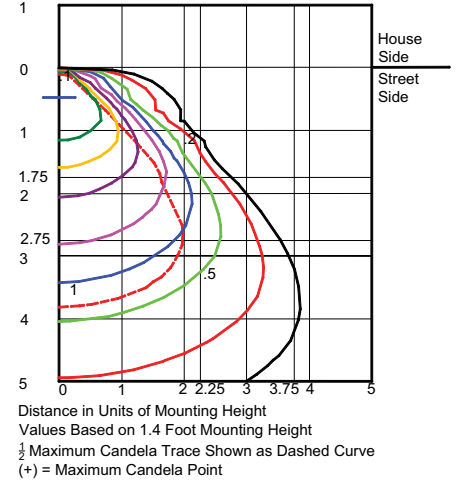
MODEL CMBL-150i/CMBL-150i-GFCI

Input Power	7.77W
Color Temperature (CCT)	2700K
Color Rendering Index (Ra)	85
Maximum Lumen Angle (vertical)	-65°
Maximum Lumen Angle (horizontal)	0°
Max. Candlepower	154cd
Delivered Lumens	178lm
Efficacy	23lm/W

Polar Graph - Intensity



Isocandela Lines of Horizontal Illuminance



Wattage	Multiplier
4Watt	0.50
8Watt	1.00
AMBER 9W	Consult Factory

Color Temp.	Multiplier
2700K	0.97
3000K	1.00
4000K	1.05
AMBER	Consult Factory

Notes