

CATALOG #: \_\_\_\_\_

TYPE: \_\_\_\_\_

PROJECT: \_\_\_\_\_

## FEATURES

- Wall or ceiling mount adds versatility
- Optional anti-microbial finish for healthcare applications
- Welded end caps for a crisp, clean appearance
- Fully-enclosed spring-loaded cam latches
- Optional tamper-resistant screws for vandal-prone areas
- Optional wireguard provides added protection
- High-performance up to 119 lm/W
- Available with Avi-on wireless fixture controls
- Made Right Here® in the USA



## SPECIFICATIONS

- HOUSING** – 20-gauge die-formed C.R.S.
- REFLECTIVE SURFACES** – 92% minimum average reflective white polyester powder coat on interior steel components.
- SHIELDING** – Frosted acrylic, pattern #12, .125" thick
- FINISH** – 92% minimum average reflective white polyester powder coat bonded to phosphate-free, multi-stage pretreated metal. All parts painted after fabrication to facilitate installation, increase efficiency, and inhibit corrosion.
- ELECTRICAL** – High-quality mid-power LED boards. See fixture performance data for lumen maintenance. 25°C maximum ambient operating temperature.
- MOUNTING** – Wall or ceiling mount.
- LISTINGS** –
  - cCSAus certified as luminaire suitable for dry or damp locations.
  - Complies with the Buy American Act and other federal regulations. Request certification at [hew.com/baa](http://hew.com/baa).
- WARRANTY** – 5-year limited warranty, see [hew.com/warranty](http://hew.com/warranty).

**ORDERING EXAMPLE: CL - 4 - L94/840 - F AF12125 - OPTIONS - CONTROL/DRV - UNV**

## ORDERING INFO

SERIES	LENGTH	LUMENS <sup>[1]</sup>	CRI	CCT	DOOR FRAME	SHIELDING
CL	4' 4'	<b>L54</b> 5,400lm <b>L88</b> 8,800lm <b>L94</b> 9,400lm <b>L120</b> 12,000lm	80	30 3000K 35 3500K 40 4000K	<b>F</b> White flat aluminum <b>R</b> White regress aluminum <b>FB</b> Black flat aluminum <b>RB</b> Black regress aluminum	<b>AF12125</b> Frosted acrylic, pattern #12, .125" thick <b>DMA</b> Diffuse matte acrylic, .080" thick

## OPTIONS <sup>[2]</sup>

<b>EM/10W</b>	10-watt emergency battery
<b>(L__)</b>	Additional lower lumen packages available Example: 9,000 lumens = CL-4-L94/840-(L90) <sup>[3]</sup>
<b>AMW</b>	Anti-microbial white finish
<b>DG</b>	Double gasket <sup>[4]</sup>
<b>TP</b>	Tamper-resistant screws <sup>[5]</sup>
<b>WG-CL-4</b>	Wireguard, 14-gauge, white, 4'

## CONTROL

–	None
<b>AVI-LVFA</b>	Avi-on wireless fixture control <sup>[6]</sup>

## DRIVER

<b>DIM</b>	Driver with external dimming wires
<b>DRV</b>	Driver without external dimming wires
<b>DA</b>	Driver with 12V auxiliary power, without external dimming wires <sup>[7]</sup>

## VOLTAGE

<b>120</b>	120V
<b>277</b>	277V
<b>UNV</b>	120-277V

## ACCESSORIES

**TPTG TOOL** Tamper-resistant tool for tri-groove screws. <sup>[8]</sup>



## NOTES

- <sup>1</sup> Lumen output based on 4000 CCT. Actual lumens may vary +/-5%, see page 2 for FIXTURE PERFORMANCE DATA.
- <sup>2</sup> See page 2 for FINISH OPTIONS. Custom colors available upon request.
- <sup>3</sup> Specify in increments of 100 nominal lumens. Option must be specified with next higher lumen package.
- <sup>4</sup> Flat aluminum door only.

- <sup>5</sup> This option requires a tamper-resistant tool, see Accessories.
- <sup>6</sup> DA Driver only. See page 3 for AVI-ON BLUETOOTH WIRELESS CONTROL DETAILS.
- <sup>7</sup> Avi-on Controls only.
- <sup>8</sup> Tamper-resistant tool must be ordered separately. Please specify quantity required per project.



## FIXTURE PERFORMANCE DATA

LED PACKAGE	DELIVERED LUMENS	WATTAGE	EFFICACY (lm/W)	LUMEN MAINTENANCE		
				L80	L85	L90
L54	5,448	46.8	116	72,000	58,000	36,000
L88	8,879	74.1	120	72,000	58,000	36,000
L94	9,522	80.5	118	72,000	58,000	36,000
L120	12,037	106.3	113	72,000	58,000	36,000

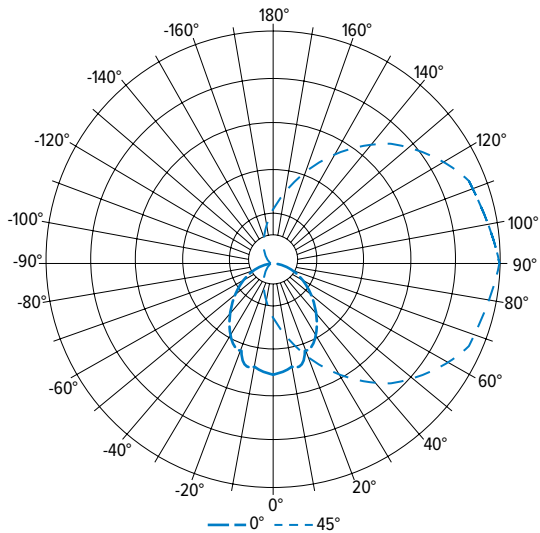
## MULTIPLIER TABLE

COLOR TEMPERATURE	
CCT	CONVERSION FACTOR
3000K	0.96
3500K	0.97
4000K	1.00

- Photometrics tested in accordance with IESNA LM-79. Results shown are based on 25°C ambient temperature.
- Wattage shown is average for 120V through 277V input.
- Results based on 4000K, 80 CRI, actual lumens may vary +/-5%
- Predicted lumen maintenance calculated from LED manufacturer IES LM-80 data and In situ temperature measurement.
- Predicted lumen maintenance calculated in accordance with IES TM-21 per Energy Star (R) TM-21 Calculator rev. 02.08.16.
- To calculate lumen output in emergency mode, multiply the battery wattage by the efficacy.
- Use multiplier table to calculate additional options.

## PHOTOMETRY

CL-4-L94-840-FAF12125-DIM-UNV Total Luminaire Output: 9522 lumens; 80.5 Watts | Efficacy: 118 lm/W | 80 CRI; 4000K CCT

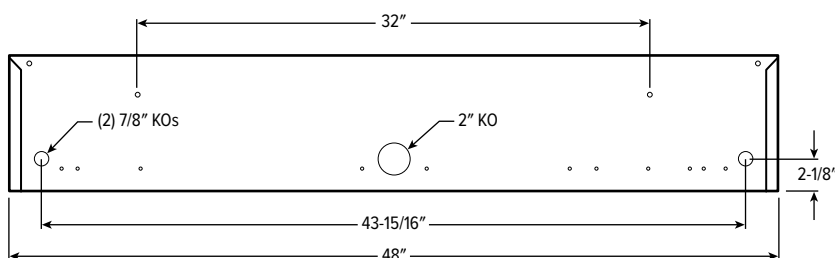


VERTICAL ANGLE	HORIZONTAL ANGLE					ZONAL LUMENS
	0°	45°	90°	135°	180°	
0	1856	1856	1856	1856	1856	
5	2302	2143	1816	1610	1488	177
15	3212	2739	1779	1147	947	536
25	3926	3148	1542	715	532	872
35	4332	3357	1292	460	259	1153
45	4586	3394	978	196	32	1322
55	4377	3107	700	32	0	1354
65	4072	2707	473	0	0	1278
75	3357	2093	282	0	0	1075
85	2694	1534	109	0	0	803
90	2088	1156	0	0	0	
95	1770	928	0	0	0	496
105	1023	510	0	0	0	271
115	591	255	0	0	0	133
125	296	0	0	0	0	46
135	22	0	0	0	0	5
145	0	0	0	0	0	0
155	0	0	0	0	0	0
165	0	0	0	0	0	0
175	0	0	0	0	0	0
180	0	0	0	0	0	

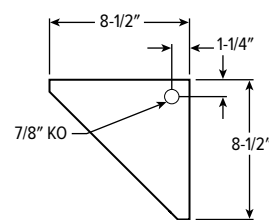
LUMEN SUMMARY	ZONE	LUMENS	% FIXTURE
	0 - 30	1585	17
	0 - 40	2738	29
	0 - 60	5414	57
	0 - 90	8571	90
	90 - 120	900	9
	90 - 130	946	10
	90 - 150	951	10
	90 - 180	951	10
	0 - 180	9522	100

## FIXTURE DETAILS

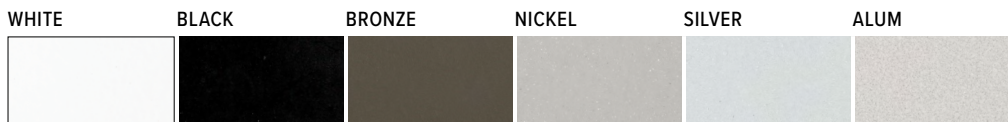
### BACKVIEW



### SIDEVIEW



## FINISH OPTIONS



For custom color, please specify RAL code or a manufacturer code with description. All custom colors other than RAL require two sample swatches, minimum 1" square.



## AVI-ON BLUETOOTH WIRELESS CONTROL DETAILS

### FEATURES

#### Simple

- Gateway-free distributed control
- Factory pre-commissioning
- Contractor friendly installation
- Occupancy/vacancy/daylight sensing

#### Scalable

- Virtually unlimited network size
- Spans small offices to large warehouses
- Flexible control strategies

#### Secure

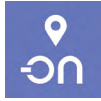
- Optional cloud connectivity
- UL IoT platinum security rating
- DLC 5.0 compliant

### DIGITAL INSTALLATION TOOLS

Avi-On mobile apps provide intuitive, quick installation and commissioning. Pro tools are available to qualified installers.



Commissioning  
Mobile App

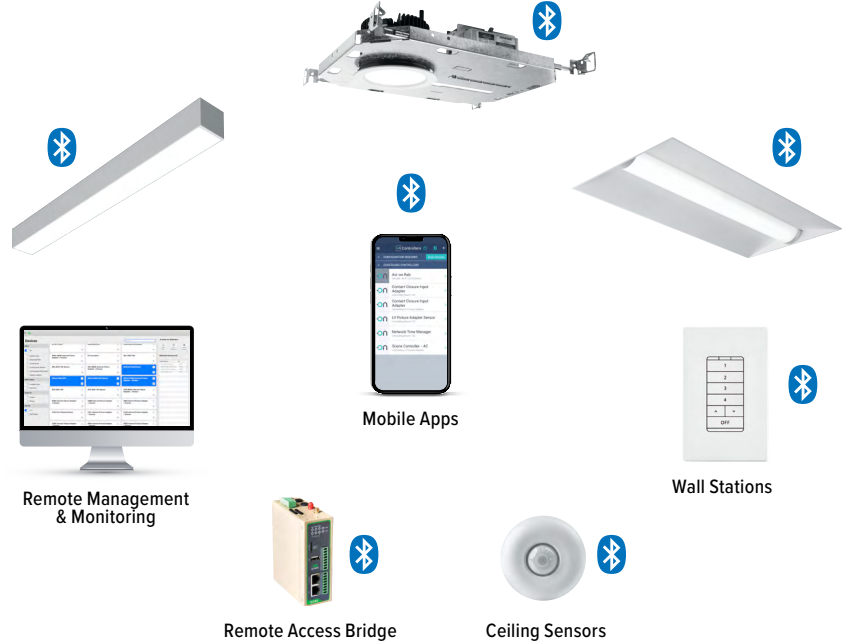


Zone Scanner  
Web App



Commissioning  
Pro App

### SYSTEM COMPONENTS



The Bluetooth® word mark and logos are registered trademarks owned by Bluetooth SIG, Inc. and any use of such marks by Avi-on is under license. Other trademarks and trade names are those of their respective owners.

### ACCESSORIES

WALL STATIONS	
AVI-2401AC	Scene controller - numbered 1-4, 120-277VAC
AVI-2402BAT	Scene controller - numbered 1-4, battery powered
AVI-2401AC-2	Dimmer with presets - percentages, 120-277VAC
AVI-2402BAT-2	Dimmer with presets - percentages, battery powered
AVI-2401AC-3	On/off/dimming, 120-277VAC
AVI-2402BAT-3	On/off/dimming, battery powered

For load controllers and additional accessory info, see [hew.com/avi-on](http://hew.com/avi-on)

NETWORK	
AVI-RAB-LTE	Remote access bridge – LTE connection
AVI-2001RAB-01-C	Remote access bridge – Wifi connection
AVI-KIT-NTM	Network time manager with battery backup
CEILING MOUNT SENSORS	
AVI-KIT-SEN-DUCM	PIR motion and ultrasonic sensor kit
AVI-KIT-SEN-ICM	PIR motion and photocell sensor kit

