

CATALOG #: \_\_\_\_\_

TYPE: \_\_\_\_\_

PROJECT: \_\_\_\_\_

**FEATURES**

- Provides soft, uniform, illumination for contractor and extruded coves
- Field-adjustable to the inch ensures a perfect fit
- Exceptional performance and value
- Multiple dimming options and integral emergency battery
- Quick-connect wiring for simple lay-in installation
- Design spaces quickly with the Linear Product Builder
- Light weight fixture assembly, 2.2 lbs/ft
- Available with Avi-on wireless fixture controls
- Made Right Here® in the USA



**ORDERING EXAMPLE: CX E - 14'08 - L10/835 - 25 - D - OPTIONS - CONTROL/DRV - UNV**

SERIES	COVE TYPE <sup>[1]</sup>	LENGTH
CX	C Contractor Cove E Extruded Cove <sup>[2]</sup>	Lengths specified in feet and inches using 1" increments, 2' minimum. Example: <b>14'08</b> = 14'-8"

**Product Builder**

Easily build shapes & simplify ordering with the Williams Linear Product Builder at [hew.com/product-builder](http://hew.com/product-builder)



LUMENS <sup>[3]</sup>	CRI	CCT	DISTRIBUTION	SHIELDING <sup>[4]</sup>
L4 400lm	8 80	30 3000K	0 0°	D Diffuse acrylic dustcover
L6 600lm	9 90 <sup>[5]</sup>	35 3500K	25 25°	
L8 800lm		40 4000K		
L10 1000lm				

**SPECIFICATIONS**

- HOUSING** – Formed sheet metal.
- SHIELDING** – Extruded diffuse acrylic lens.
- FINISH** – 92% minimum average reflective white polyester powder coat bonded to phosphate-free, multi-stage pretreated metal. All parts painted after fabrication to facilitate installation, increase efficiency, and inhibit corrosion.
- ELECTRICAL** – High-quality mid-power LED boards. L70 >60,000 hours per IES TM-21.
- MOUNTING** – Lay-in cove.
- LISTINGS** –
  - cCSAus certified as luminaire suitable for dry or damp locations.
  - Complies with the Buy American Act and other federal regulations. Request certification at [hew.com/baa](http://hew.com/baa).
- WARRANTY** – 5-year limited warranty, see [hew.com/warranty](http://hew.com/warranty).

**OPTIONS**

<b>EM/10WLP</b>	Low-profile 10-watt emergency battery <sup>[6]</sup>
<b>AMW</b>	Anti-microbial white finish
<b>(L__)</b>	Additional lower lumen packages available Example: 900 lumens = CXE-14'08-L10/835-(L9) <sup>[7]</sup>

**CONTROL**

–	None
<b>AVI-LVFA</b>	Avi-on wireless fixture control <sup>[8]</sup>
<b>VRF</b>	Lutron VIVE integral fixture control, RF only (DFCSJ-OEM-RF) <sup>[9]</sup>

**DRIVER <sup>[10]</sup>**

<b>DIM</b>	Driver with external dimming wires	<b>120</b> 120V
<b>DRV</b>	Driver without external dimming wires	<b>277</b> 277V
<b>DA</b>	Driver with 12V auxiliary power, without external dimming wires <sup>[11]</sup>	<b>UNV</b> 120-277V
<b>DSR</b>	Sensor-ready driver without external dimming wires <sup>[12]</sup>	<b>347</b> 347V <sup>[13]</sup>

**VOLTAGE**



**NOTES**

- For additional styles, consult factory.
- By others. See page 3 for FIXTURE DETAILS.
- Lumens per foot output based on 80 CRI, 3500K CCT. Actual lumens may vary ± 5%. See page 2 for FIXTURE PERFORMANCE DATA. Additional lumen packages available, see Options.
- Lens length trimmed to size in field.
- Extended lead times may apply. Consult factory for availability.
- Not available with fixtures less than 4'.
- (L5) lumen package minimum. Specify in increments of 100 nominal lumens. Option must be specified with next higher lumen package.
- DA Driver only. See page 4 for AVI-ON BLUETOOTH WIRELESS CONTROL DETAILS.
- DSR or LDE Drivers only. LDE drivers require driver interface. See page 4 for VIVE CONTROL OPTIONS.
- See page 4 for ADDITIONAL DRIVER OPTIONS.
- Avi-on Controls only.
- VRF Control only.
- Not available with EM batteries or Avi-on Controls.



**FIXTURE PERFORMANCE DATA**

PER FOOT				
DISTRIBUTION	DELIVERED LUMENS	WATTAGE	EFFICACY (lm/W)	
L4	0	417	3.5	119
	25	412		118
L6	0	649	5.5	118
	25	641		117
L8	0	854	7.3	117
	25	844		116
L10	0	1064	9.2	116
	25	1051		114

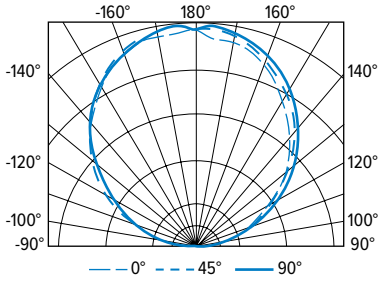
**MULTIPLIER TABLES**

COLOR TEMPERATURE		
CCT	CONVERSION FACTOR	
80 CRI	3000K	0.99
	3500K	1.00
	4000K	1.03
90 CRI	3000K	0.82
	3500K	0.83
	4000K	0.86

- Photometrics tested in accordance with IESNA LM-79. Results shown are based on 25°C ambient temperature.
- Wattage shown is average for 120V through 277V input.
- Results based on 3500K, 80 CRI, actual lumens may vary +/-5%.
- To calculate lumen output in emergency mode, multiply the battery wattage by the efficacy.
- Use multiplier table to calculate additional options.

**PHOTOMETRY**

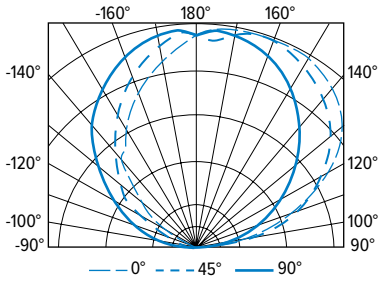
CXC-3'08-L10/835-0-D-DRV-120 Report #: 19927; 06/21/17 | Total Luminaire Output: 3902 lumens; 33.6 Watts | Efficacy: 116.1 lm/W | 80 CRI; 3500K CCT



CANDLEPOWER DISTRIBUTION	VERTICAL ANGLE	HORIZONTAL ANGLE					ZONAL LUMENS
		0°	45°	90°	135°	180°	
	90	0	0	0	0	0	
	95	2	11	75	70	72	58
	105	205	237	291	276	276	283
	115	437	462	481	503	490	483
	125	644	668	704	723	700	626
	135	835	867	911	923	905	705
	145	1008	1047	1083	1102	1091	675
	155	1165	1199	1233	1252	1241	567
	165	1273	1311	1332	1343	1317	375
	175	1306	1362	1384	1382	1331	130
	180	1358	1358	1358	1358	1358	

LUMEN SUMMARY	ZONE	LUMENS	% FIXTURE
	90 - 120	824	21
	90 - 130	1450	37
	90 - 150	2830	73
	90 - 180	3902	100
	0 - 180	3902	100

CXC-3'08-L10/835-25-D-DRV-120 Report #: 19929; 06/19/17 | Total Luminaire Output: 3855 lumens; 33.6 Watts | Efficacy: 114.7 lm/W | 80 CRI; 3500K CCT



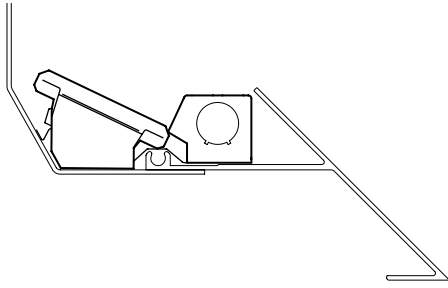
CANDLEPOWER DISTRIBUTION	VERTICAL ANGLE	HORIZONTAL ANGLE					ZONAL LUMENS
		0°	45°	90°	135°	180°	
	90	0	0	0	0	0	
	95	125	124	72	19	6	91
	105	426	493	282	69	56	294
	115	775	759	475	268	105	492
	125	1041	963	659	508	316	627
	135	1200	1103	856	675	540	696
	145	1292	1220	1038	859	738	648
	155	1331	1299	1171	1019	918	533
	165	1318	1326	1260	1173	1071	352
	175	1244	1304	1303	1286	1199	122
	180	1271	1271	1271	1271	1271	

LUMEN SUMMARY	ZONE	LUMENS	% FIXTURE
	90 - 120	877	23
	90 - 130	1503	39
	90 - 150	2848	74
	90 - 180	3855	100
	0 - 180	3855	100



**FIXTURE DETAILS**

**EXTRUDED COVE, 25°**



Example cove style, by others, shown

**EXTENDED CHANNEL**

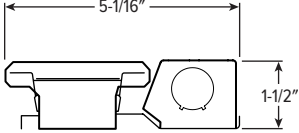


Adjustable to the inch

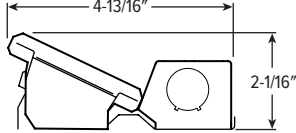
**CROSS SECTIONS**

**CONTRACTOR COVE TYPE**

**0° DISTRIBUTION**

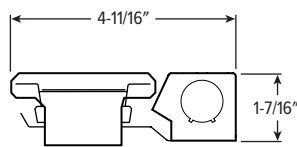


**25° DISTRIBUTION**

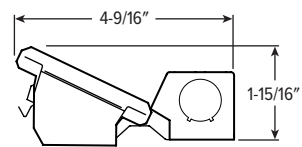


**EXTRUDED COVE TYPE**

**0° DISTRIBUTION**



**25° DISTRIBUTION**



SEE NEXT PAGE FOR CONTROL DETAILS.



**AVI-ON BLUETOOTH WIRELESS CONTROL DETAILS**

**FEATURES**

**Simple**

- Gateway-free distributed control
- Factory pre-commissioning
- Contractor friendly installation
- Occupancy/vacancy/daylight sensing

**Scalable**

- Virtually unlimited network size
- Spans small offices to large warehouses
- Flexible control strategies

**Secure**

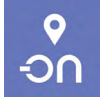
- Optional cloud connectivity
- UL IoT platinum security rating
- DLC 5.0 compliant

**DIGITAL INSTALLATION TOOLS**

Avi-On mobile apps provide intuitive, quick installation and commissioning. Pro tools are available to qualified installers.



Commissioning Mobile App

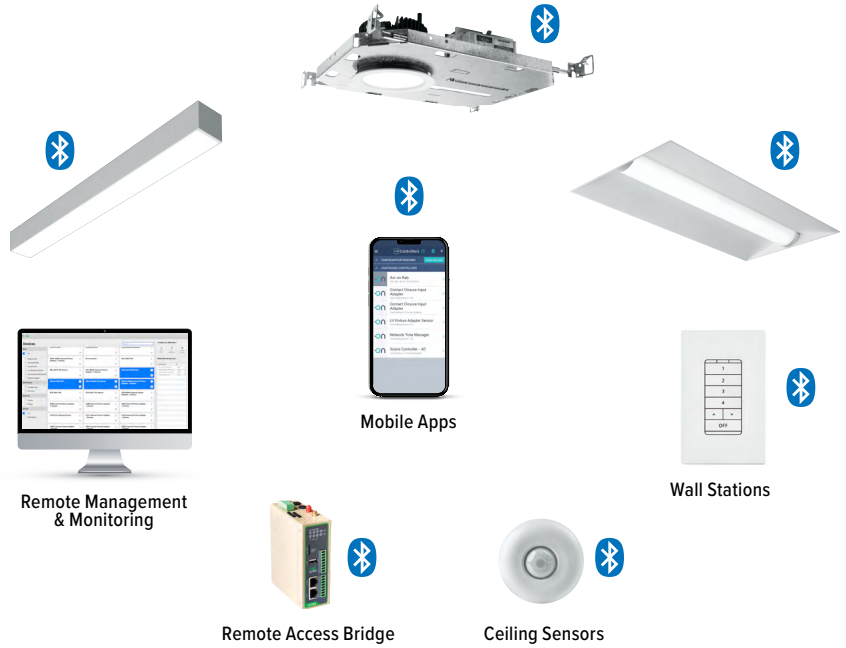


Zone Scanner Web App



Commissioning Pro App

**SYSTEM COMPONENTS**



The Bluetooth® word mark and logos are registered trademarks owned by Bluetooth SIG, Inc. and any use of such marks by Avi-on is under license. Other trademarks and trade names are those of their respective owners.

**ACCESSORIES**

WALL STATIONS	
AVI-2401AC	Scene controller - numbered 1-4, 120-277VAC
AVI-2402BAT	Scene controller - numbered 1-4, battery powered
AVI-2401AC-2	Dimmer with presets - percentages, 120-277VAC
AVI-2402BAT-2	Dimmer with presets - percentages, battery powered
AVI-2401AC-3	On/off/dimming, 120-277VAC
AVI-2402BAT-3	On/off/dimming, battery powered

NETWORK	
AVI-RAB-LTE	Remote access bridge – LTE connection
AVI-2001RAB-01-C	Remote access bridge – Wifi connection
AVI-KIT-NTM	Network time manager with battery backup

CEILING MOUNT SENSORS	
AVI-KIT-SEN-DUCM	PIR motion and ultrasonic sensor kit
AVI-KIT-SEN-ICM	PIR motion and photocell sensor kit

For load controllers and additional accessory info, see [hew.com/avi-on](http://hew.com/avi-on)

**VIVE CONTROL OPTIONS**

CATALOG NUMBER	DESCRIPTION
VRF	Lutron Vive integral fixture control, RF only (DFCSJ-OEM-RF), for use with sensor-ready driver
VRF/DBI	Lutron Vive integral fixture control, RF only (DFCSJ-OEM-RF) and digital link interface, for use with Lutron Hi-lume 1% EcoSystem dimming LED driver

**ADDITIONAL DRIVER OPTIONS**

Note: Lumen restrictions apply, consult product builder at [hew.com/product-builder](http://hew.com/product-builder).

CATALOG NUMBER	DESCRIPTION
DRV	Driver prewired for non-dimming applications
DIM	Dimming driver prewired for 0-10V low voltage applications
DIM1	1% dimming driver prewired for 0-10V low voltage applications
DIM LINE	Line voltage dimming driver (TRIAC and ELV compatible, 120V only)
DIM TRC	Line voltage dimming driver (TRIAC compatible, 120V only)
DA	Dimming driver with 12V auxiliary
DSR	Sensor-ready driver
SD40	40% step-dimming driver
SD50	50% step-dimming driver
DALI	DALI dimming driver
LDE1	Lutron Hi-lume 1% EcoSystem dimming LED driver

