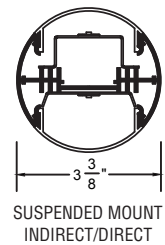
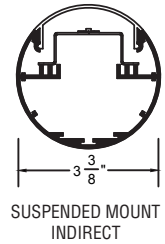
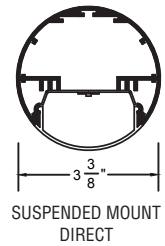


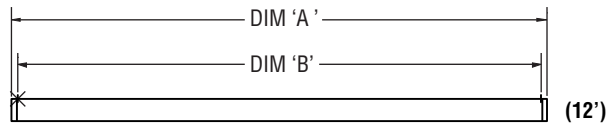
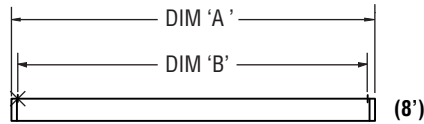
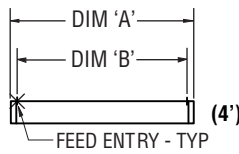
AR300 Series

Standard Fixture Lengths and Mounting Centers

Suspended Mount Configurations

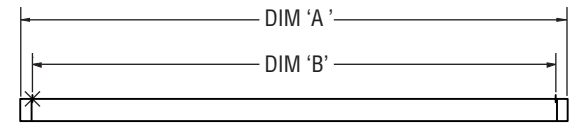
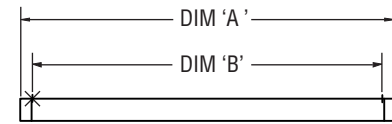
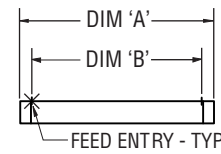


FLAT END CAP FIXTURES - (FE)



OVERALL FIXTURE LENGTH DIM 'A'	MOUNTING CENTERS DIM 'B'
51"	48"
99"	96"
*147"	*144"

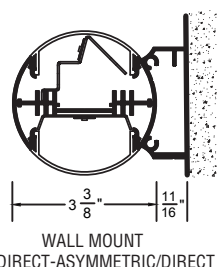
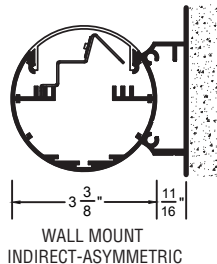
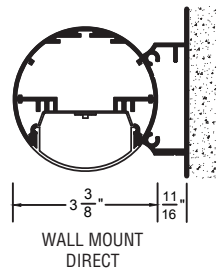
SCULPTED END CAP FIXTURES - (SE)



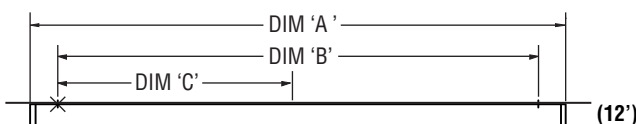
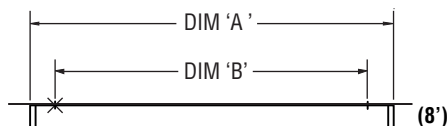
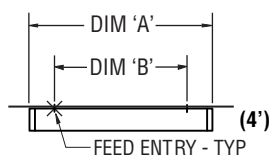
OVERALL FIXTURE LENGTH DIM 'A'	MOUNTING CENTERS DIM 'B'
54 - 11/16"	48"
102 - 11/16"	96"
*150 - 11/16"	*144"

*NOTE: DIRECT-ONLY & INDIRECT-ONLY INDIVIDUAL FIXTURES ARE AVAILABLE IN LENGTHS UP TO 12' LONG.
INDIRECT/DIRECT INDIVIDUAL FIXTURES ARE AVAILABLE IN LENGTHS UP TO 8' LONG.

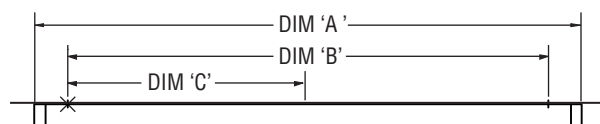
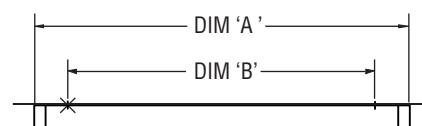
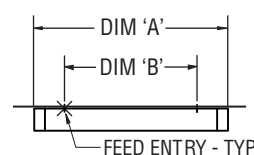
Wall Mount Configurations



FLAT END CAP FIXTURES - (FE)



SCULPTED END CAP FIXTURES - (SE)



OVERALL FIXTURE LENGTH USING FLAT END CAPS DIM 'A'	OVERALL FIXTURE LENGTH USING SCULPTED END CAPS DIM 'A'	MOUNTING CENTERS DIM 'B'	MOUNTING CENTERS DIM 'C'
51"	54 - 11/16"	36"	-----
99"	102 - 11/16"	84"	-----
147"	150 - 11/16"	132"	66"

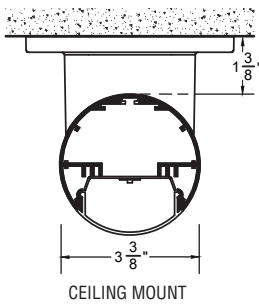
PAL RESERVES THE RIGHT TO CHANGE PRODUCT DESIGN AND SPECIFICATIONS. CONTACT FACTORY FOR MOST RECENT PRODUCT INFORMATION.



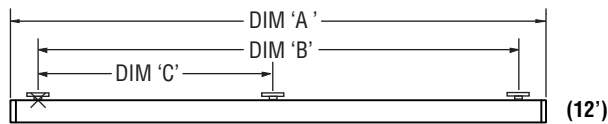
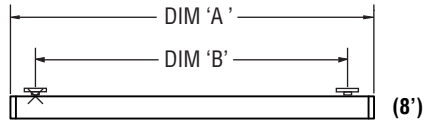
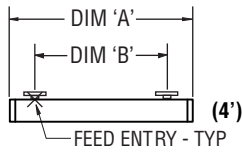
AR300 Series

Standard Fixture Lengths and Mounting Centers

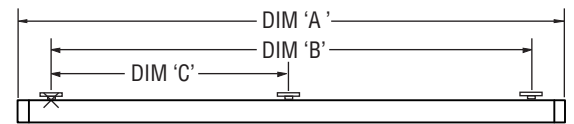
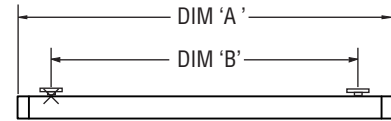
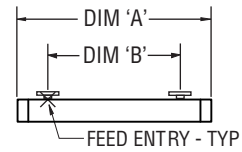
Ceiling Mount Configurations



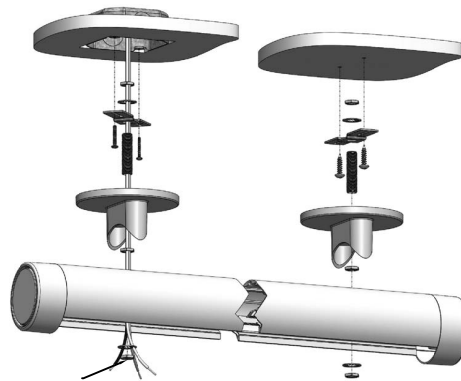
FLAT END CAP FIXTURES - (FE)



SCULPTED END CAP FIXTURES - (SE)



OVERALL FIXTURE LENGTH USING FLAT END CAPS DIM 'A'	OVERALL FIXTURE LENGTH USING SCULPTED END CAPS DIM 'A'	MOUNTING CENTERS DIM 'B'	MOUNTING CENTERS DIM 'C'
51"	54 - 11/16"	36"	-----
99"	102 - 11/16"	84"	-----
147"	150 - 11/16"	132"	66"



PAL RESERVES THE RIGHT TO CHANGE PRODUCT DESIGN AND SPECIFICATIONS. CONTACT FACTORY FOR MOST RECENT PRODUCT INFORMATION.