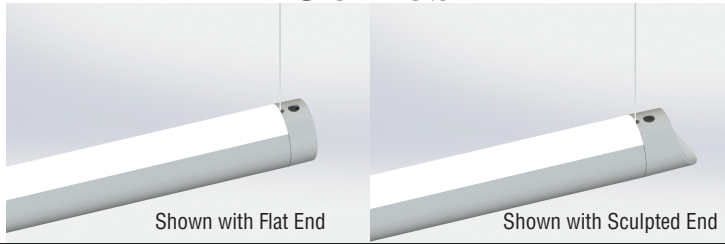


# AR300™ - Indirect Suspended Series



## S P E C I F I C A T I O N S

### Housing

One-piece .070" thick extruded aluminum. Standard lengths are nominal 4', 8', and 12'. Provisions may be made for continuous rows of any length.

### End Caps

- (FE) Flat End - Die-cast aluminum finished to match fixture housing and secured with no visible fasteners.
- (SE) Sculpted End - Die-cast aluminum finished to match fixture housing and secured with no visible fasteners.

### Finish

Standard and premium finishes are baked powder coat electrostatically applied (2.0 mil minimum thickness) to assure aesthetics and durability.

### Indirect Optical Controls

- (LOH) LED optimized high transmittance acrylic snap-in lens.
- (WSCL) Wide-Spread Optic - Clear co-extruded acrylic snap-in lens.

### Reflector/Heat Sink

.040" thick die-formed aluminum finished with a high reflectance white enamel.

### Circuitry

All fixtures are factory pre-wired for a single circuit. Provision for multiple switching/circuiting is optional.

### Wiring

All fixtures intended for continuous rows are provided with factory installed quick-connect wiring.

### Integral Controls

Contact factory for daylight and/or occupancy sensor controls.

### Driver (Standard)

Power supply is UL/CUL recognized, 0-10V dimming available 120-277 universal voltage. 347V is available.

### Light Engine (Standard)

LED light source available standard for 3000K, 3500K and 4000K CCT, in high and medium light outputs, and 80 or 90 CRI. Standard outputs:

#### HO -High Output (LOH Lens)

\*3796 Total Delivered Lms. at 28 System Watts

#### HO -High Output (W.S. Optic with Clear Lens)

\*3590 Total Delivered Lms. at 28 System Watts

#### MO -Medium Output (LOH Lens)

\*2603 Total Delivered Lms. at 19 System Watts

#### MO -Medium Output (W.S. Optic with Clear Lens)

\*2460 Total Delivered Lms. at 19 System Watts

(\*All values per 4' using 4000K LED modules)

### Driver (Tunable White)

EldoLED power supply is UL recognized, DALI or DMX available, 120-277 universal voltage.

### Light Engine (Tunable White)

Tunable White LED light source available for 2700K thru 6500K CCT, and 80 or 90 CRI. Contact factory for available outputs.

### Certification

Fixtures are ETL listed for use in 'Dry or Damp Applications.' Conforms to UL Standard #1598 and to CAN/CSA #C22.2No.250.0

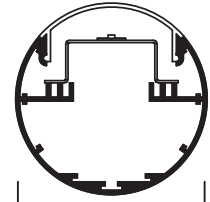
Catalog Number

Type

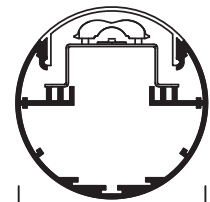
Project Name

## AR300-Ind.-Susp.

3 3/8" Diameter Round - Indirect Only Suspended Mount



AR300-I-HO-C-LOH  
AR300-I-MO-C-LOH



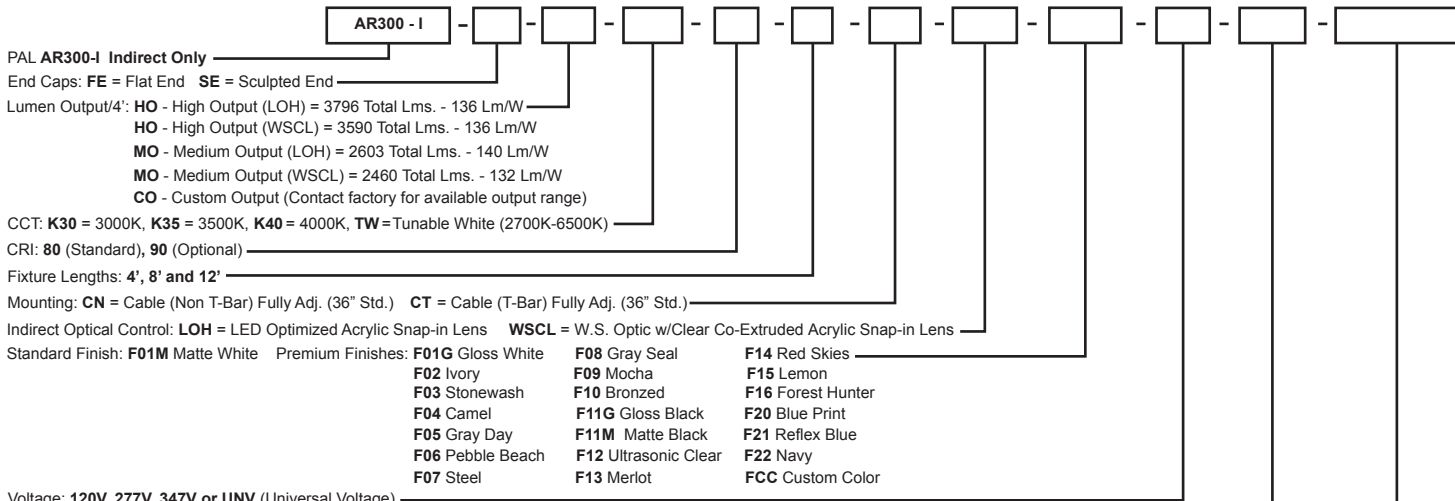
AR300-I-HO-C-WSCL  
AR300-I-MO-C-WSCL



Wide-Spread Optic - WS

The WS optic is a precisely designed, optical-grade acrylic LED-refraction system. Engineered for superior ceiling uniformity, it provides a more comfortable illuminated space while reducing energy requirements.

Sample Catalog Number: **AR300 - I - FE - HO - K40 - 80 - 4 - CN - LOH - F01M - 120 - DIM1 - OPTIONS**



Voltage: **120V**, **277V**, **347V** or **UNV** (Universal Voltage)

Drivers: **DIM1** = Standard Driver - No Dimming **DIM1** = Standard Driver wired for Dimming - 100% to 1% **DIM0** = Optional Driver with Available Dimming - 100% to 0% (Dark)

Options: **NLCKT** = Night-Light Circuit (Common Neutral) **EMCKT** = Emergency Circuit (Separate Hot & Neutral) **EBPHST** = Self-Testing Emergency Battery Pack (10 Watt)

**DALI** = DALI Protocol Driver (Tunable White) **DMX** = DMX Protocol Driver (Tunable White) **0-10V/TW** = 0-10V Driver (Tunable White) **FS** = Fused Drivers



Precision Architectural Lighting 4830 Timber Creek Drive Houston, Texas 77017  
 Tel 713.946.4343 Fax 713.946.4441 www.pal-lighting.com



Made in America

# Suspended - Indirect

## AR300 - I - HO - K40 - LOH

Indirect - High Output

### LED Optimized High Transmittance Lens

**Catalog Number:** AR300-I-HO-K40-80-4'-X-LOH-120

**Report Number:** #LLIA000930-006.ies

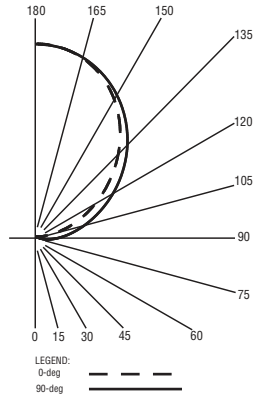
**Luminaire Description:** Extruded Aluminum Housing with White Aluminum Reflector and LED Optimized Acrylic Lens Up

**LED Module:** Multiple White Low-Power Light Emitting Diodes (LEDs) in a precise lay-out.

Total Luminaire Efficacy = 135.8 Lm/W

Color Rendering Index (CRI) = 84

100% Up



LED lighting facts							
Light Output (Lumens)	3796						
Watts	27.96						
Lumens per Watt (Efficacy)	135.77						
Color Accuracy Color Rendering Index (CRI)	84						
Light Color Correlated Color Temperature (CCT)	4019 (Bright White)						
<table border="1"> <tr> <td>Warm White</td> <td>Bright White</td> <td>Daylight</td> </tr> <tr> <td>2700K</td> <td>3000K</td> <td>4500K</td> </tr> </table>		Warm White	Bright White	Daylight	2700K	3000K	4500K
Warm White	Bright White	Daylight					
2700K	3000K	4500K					
<small>All results are according to IESNA LM-79-2008 - Approved Method for the Electrical and Photometric Testing of Solid-State Lighting.</small>							
<small>Visit <a href="http://www.lightingfacts.com">www.lightingfacts.com</a> for the Label Reference Guide.</small>							
<small>Registration Number: INRP-WPW482 (2/19/2018) Model Number: AR300-I-HO-K40-80-4-CX-LH-XXXX-120 Type: Luminaire - Linear</small>							

## AR300 - I - MO - K40 - LOH

Indirect - Medium Output

### LED Optimized High Transmittance Lens

**Catalog Number:** AR300-I-MO-K40-80-4'-X-LOH-120

**Report Number:** #LLIA000930-005.ies

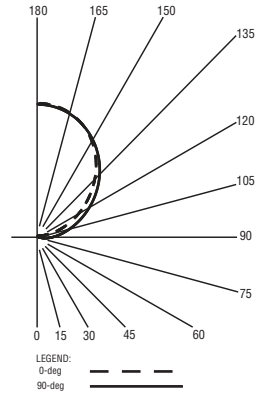
**Luminaire Description:** Extruded Aluminum Housing with White Aluminum Reflector and LED Optimized Acrylic Lens Up

**LED Module:** Multiple White Low-Power Light Emitting Diodes (LEDs) in a precise lay-out.

Total Luminaire Efficacy = 139.2 Lm/W

Color Rendering Index (CRI) = 85

100% Up



LED lighting facts							
Light Output (Lumens)	2603						
Watts	18.7						
Lumens per Watt (Efficacy)	139.2						
Color Accuracy Color Rendering Index (CRI)	85						
Light Color Correlated Color Temperature (CCT)	4009 (Bright White)						
<table border="1"> <tr> <td>Warm White</td> <td>Bright White</td> <td>Daylight</td> </tr> <tr> <td>2700K</td> <td>3000K</td> <td>4500K</td> </tr> </table>		Warm White	Bright White	Daylight	2700K	3000K	4500K
Warm White	Bright White	Daylight					
2700K	3000K	4500K					
<small>All results are according to IESNA LM-79-2008 - Approved Method for the Electrical and Photometric Testing of Solid-State Lighting.</small>							
<small>Visit <a href="http://www.lightingfacts.com">www.lightingfacts.com</a> for the Label Reference Guide.</small>							
<small>Registration Number: INRP-V3PJTO (2/20/2018) Model Number: AR300-I-MO-K40-80-4-CX-LH-XXXX-120 Type: Luminaire - Linear</small>							

## AR300 - I - HO - K40 - WSCL

Indirect - High Output

### Wide-Spread Optic/Distribution - Clear Lens

**Catalog Number:** AR300-I-HO-K40-80-4'-X-WSCL-120

**Report Number:** #LLIA000930-004.ies

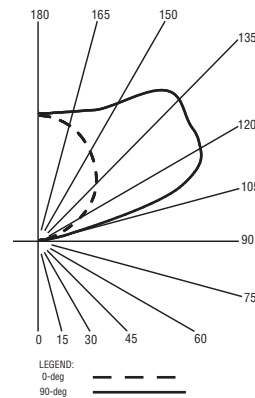
**Luminaire Description:** Extruded Aluminum Housing with White Aluminum Reflector and Acrylic 'Wide-Spread' Insert with Clear Lens

**LED Module:** Multiple White Low-Power Light Emitting Diodes (LEDs) in a precise lay-out.

Total Luminaire Efficacy = 128.4 Lm/W

Color Rendering Index (CRI) = 84

100% Up



LED lighting facts							
Light Output (Lumens)	3590						
Watts	27.97						
Lumens per Watt (Efficacy)	128.35						
Color Accuracy Color Rendering Index (CRI)	84						
Light Color Correlated Color Temperature (CCT)	4034 (Bright White)						
<table border="1"> <tr> <td>Warm White</td> <td>Bright White</td> <td>Daylight</td> </tr> <tr> <td>2700K</td> <td>3000K</td> <td>4500K</td> </tr> </table>		Warm White	Bright White	Daylight	2700K	3000K	4500K
Warm White	Bright White	Daylight					
2700K	3000K	4500K					
<small>All results are according to IESNA LM-79-2008 - Approved Method for the Electrical and Photometric Testing of Solid-State Lighting.</small>							
<small>Visit <a href="http://www.lightingfacts.com">www.lightingfacts.com</a> for the Label Reference Guide.</small>							
<small>Registration Number: INRP-4XK7NR (2/20/2018) Model Number: AR300-I-HO-K40-80-4-CX-WSCL-XXXX-120 Type: Luminaire - Linear</small>							

## AR300 - I - MO - K40 - WSCL

Indirect - Medium Output

### Wide-Spread Optic/Distribution - Clear Lens

**Catalog Number:** AR300-I-MO-K40-80-4'-X-WSCL-120

**Report Number:** #LLIA000930-003.ies

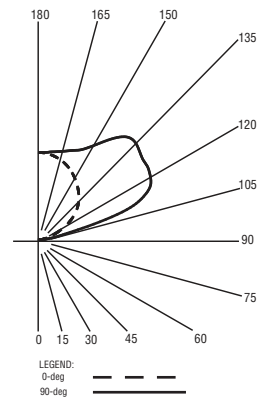
**Luminaire Description:** Extruded Aluminum Housing with White Aluminum Reflector and Acrylic 'Wide-Spread' Insert with Clear Lens

**LED Module:** Multiple White Low-Power Light Emitting Diodes (LEDs) in a precise lay-out.

Total Luminaire Efficacy = 132.1 Lm/W

Color Rendering Index (CRI) = 85

100% Up



LED lighting facts							
Light Output (Lumens)	2460						
Watts	18.63						
Lumens per Watt (Efficacy)	132.05						
Color Accuracy Color Rendering Index (CRI)	85						
Light Color Correlated Color Temperature (CCT)	4020 (Bright White)						
<table border="1"> <tr> <td>Warm White</td> <td>Bright White</td> <td>Daylight</td> </tr> <tr> <td>2700K</td> <td>3000K</td> <td>4500K</td> </tr> </table>		Warm White	Bright White	Daylight	2700K	3000K	4500K
Warm White	Bright White	Daylight					
2700K	3000K	4500K					
<small>All results are according to IESNA LM-79-2008 - Approved Method for the Electrical and Photometric Testing of Solid-State Lighting.</small>							
<small>Visit <a href="http://www.lightingfacts.com">www.lightingfacts.com</a> for the Label Reference Guide.</small>							
<small>Registration Number: INRP-SPLBA (2/20/2018) Model Number: AR300-I-MO-K40-80-4-CX-WSCL-XXXX-120 Type: Luminaire - Linear</small>							

For more information, visit our website at [www.pal-lighting.com](http://www.pal-lighting.com)



Precision Architectural Lighting 4830 Timber Creek Drive Houston, Texas 77017  
Tel 713.946.4343 Fax 713.946.4441 [www.pal-lighting.com](http://www.pal-lighting.com)



Made in America