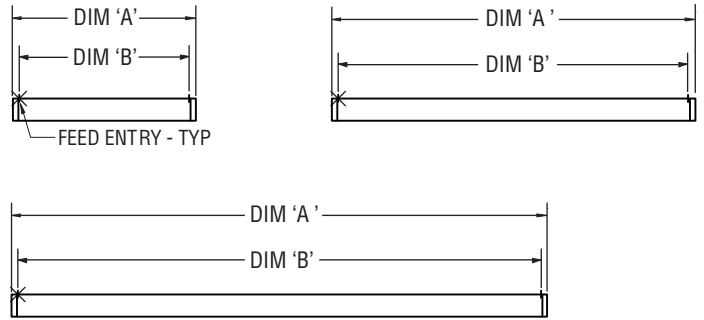
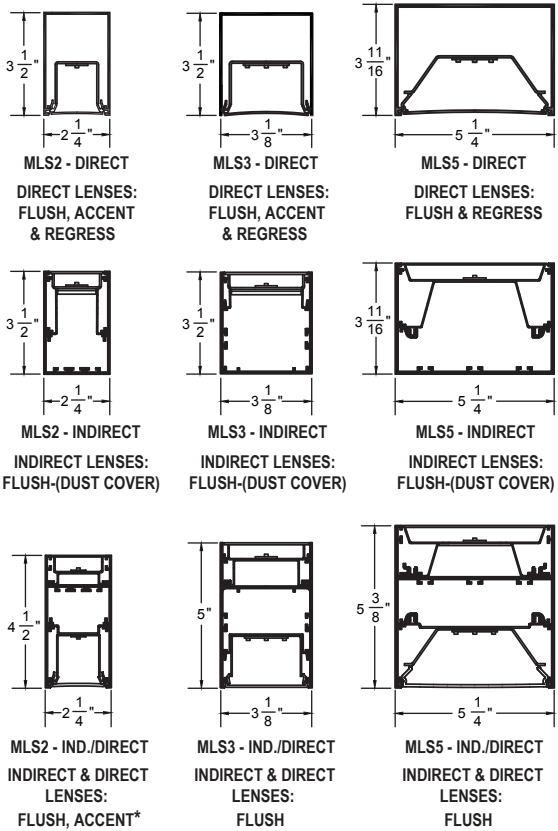


# Microlinea Series 2, Series 3 & Series 5

## Standard Fixture Lengths and Mounting Centers

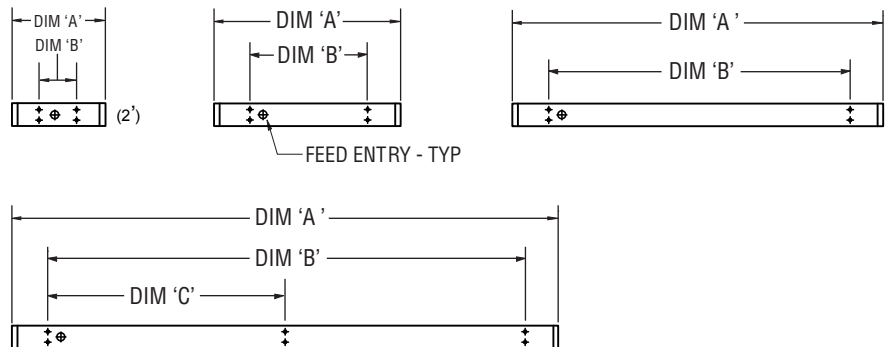
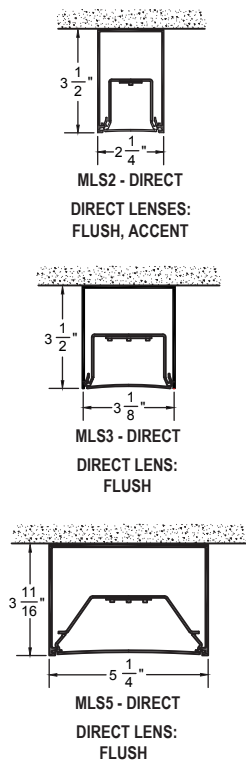
### Suspended Mount Configurations



NOMINAL LENGTH SERIES 2, 3, & 5	OVERALL FIXTURE LENGTH - DIM 'A' SERIES 2, 3, & 5	MTG. CTRS. - DIRECT - DIM 'B' SERIES 2, 3, & 5	MTG. CTRS. - INDIRECT - DIM 'B' SERIES 2, 3, & 5	MTG. CTRS. - IND./DIRECT - DIM 'B' SERIES 2 & 5	MTG. CTRS. - IND./DIRECT - DIM 'B' SERIES 3
2'	24 - 13/16"	22 - 1/16"	22 - 13/16"	21 - 9/16"	22 - 13/16"
3'	36 - 13/16"	34 - 1/16"	34 - 13/16"	33 - 9/16"	34 - 13/16"
4'	48 - 13/16"	46 - 1/16"	46 - 13/16"	45 - 9/16"	46 - 13/16"
6'	71 - 5/8"	68 - 7/8"	69 - 5/8"	68 - 3/8"	69 - 5/8"
8'	95 - 5/8"	92 - 7/8"	93 - 5/8"	92 - 3/8"	93 - 5/8"
12'	142 - 7/16"	139 - 11/16"	140 - 7/16"	139 - 3/16"	140 - 7/16"

\*CONTACT PAL FACTORY FOR MOUNTING CENTERS FOR SERIES 2 SUSPENDED INDIRECT/DIRECT FIXTURES WITH ACCENT LENSES.

### Ceiling Mount Configurations



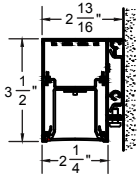
NOMINAL LENGTH SERIES 2, 3, & 5	OVERALL FIXTURE LENGTH DIM 'A' SERIES 2, 3, & 5	MOUNTING CENTERS DIM 'B' SERIES 2, 3, & 5	MOUNTING CENTERS DIM 'C' SERIES 2, 3, & 5
2'	24 - 13/16"	10 - 13/16"	-----
3'	36 - 13/16"	18 - 13/16"	-----
4'	48 - 13/16"	30 - 13/16"	-----
6'	71 - 5/8"	53 - 5/8"	-----
8'	95 - 5/8"	77 - 5/8"	-----
12'	142 - 7/16"	124 - 7/16"	62 - 7/32"

PAL RESERVES THE RIGHT TO CHANGE PRODUCT DESIGN AND SPECIFICATIONS. CONTACT FACTORY FOR MOST RECENT PRODUCT INFORMATION.

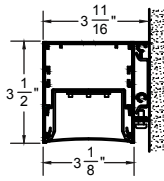
# Microlinea Series 2, Series 3 & Series 5

## Standard Fixture Lengths and Mounting Centers

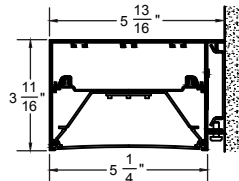
### Wall Mount Configurations



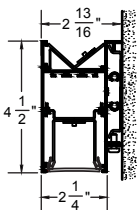
**MLP2 - DIRECT**  
DIRECT LENSES:  
FLUSH & ACCENT



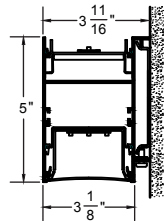
**MLP3 - DIRECT**  
DIRECT LENS:  
FLUSH



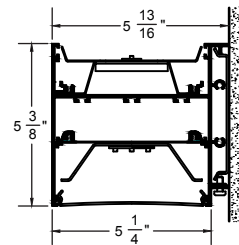
**MLS5 - DIRECT**  
DIRECT LENS:  
FLUSH



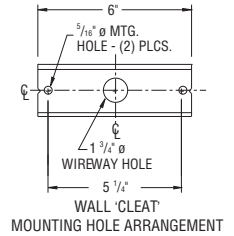
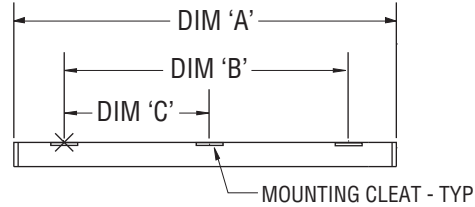
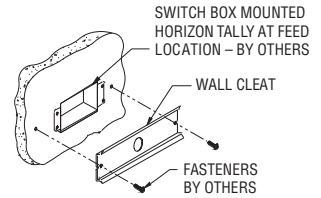
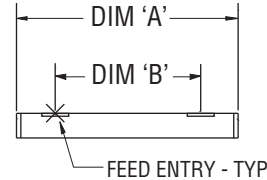
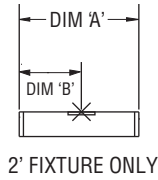
**MLP2 - IND./DIRECT**  
INDIRECT & DIRECT  
LENSES:  
FLUSH & ACCENT



**MLP3 - IND./DIRECT**  
INDIRECT & DIRECT  
LENSES:  
FLUSH



**MLP5 - IND./DIRECT**  
INDIRECT & DIRECT  
LENSES:  
FLUSH



NOMINAL LENGTH SERIES 2, 3, & 5	OVERALL FIXTURE LENGTH DIM 'A' SERIES 2, 3, & 5	MOUNTING CENTERS DIM 'B' SERIES 2, 3, & 5	MOUNTING CENTERS DIM 'C' SERIES 2, 3, & 5
2'	24 - 13/16"	12 - 13/32"	-----
3'	36 - 13/16"	22 - 13/16"	-----
4'	48 - 13/16"	34 - 13/16"	-----
6'	71 - 5/8"	57 - 5/8"	-----
8'	95 - 5/8"	81 - 5/8"	-----
12'	142 - 7/16"	128 - 7/16"	64 - 7/32"

PAL RESERVES THE RIGHT TO CHANGE PRODUCT DESIGN AND SPECIFICATIONS. CONTACT FACTORY FOR MOST RECENT PRODUCT INFORMATION.