



HRSM-LED

Healthcare Surgical **LED** Symmetrical Grid / Flange 15/16 to 1.5 in. T Grid

PRODUCT SPECIFICATION

The HRSM series is designed for dust-free operation in surgical suites where symmetrical distribution illumination is required.

Mounting

Suitable for installation in recessed 15/16"–1.5" T-Grid or hard ceiling applications. Hard ceiling (flange) type mounts via swing arm brackets that extend and clamp with a single screw action. Swing arm bracket also serves as connection for earthquake cables.

Housing

18 gauge cold rolled steel die-formed to shape with seams welded, ground smooth, and caulked airtight. Aluminum and 304 stainless steel available.

Door

One-piece 18 gauge cold rolled steel, gasketed and sealed overlapping door. Freedom Hinge™ design permits removal and hinging from either side. Aluminum and 304 stainless steel available.

Lens

Optic Plus lens (standard) completely hides diode image while providing greater than 90% light transmission.

Finish

Antimicrobial white powder-coat applied after phosphate pretreatment for superior adhesion and corrosion resistance. Brushed stainless steel door available.

Hardware

Stainless steel fasteners.

Driver

Tested and Certified MIL461 driver

Certifications

UL Listed wet location and IP65 rated. Suitable for use in ISO-3 cleanrooms (209E Class 1). Certified to MIL-STD-461F: CE101, CE102, CS101, CS106, CS114, CS116, RE101, RE102, RS101, RS103, MIL-STD-1399-300B: 5.3.1 through 5.3.9.

Job Name

Fixture Type

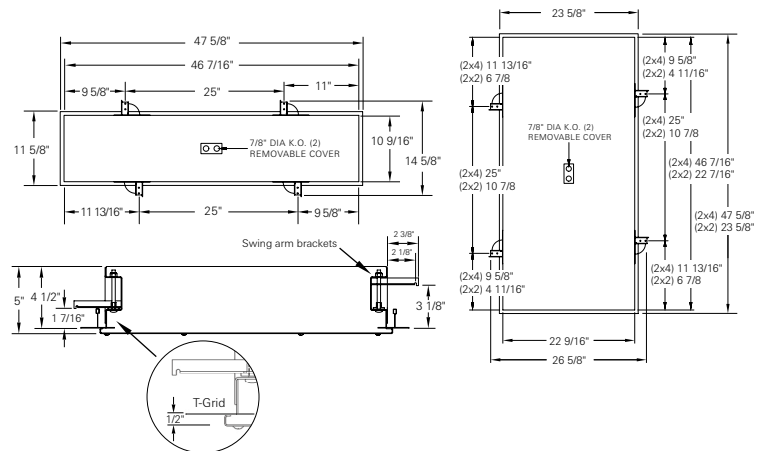
Catalog No.

Approval

Date



Ceiling Grid / Flange Design



| | | | | | | | | | | | |
|------|-----|-----|-------|------|------|-----|-------|-------|------|-----|--------|
| | one | two | three | four | five | six | seven | eight | nine | ten | eleven |
| HRSM | - | / | - | - | - | - | - | MIL | - | 122 | / |

one Luminaire Size

- 14 1 x 4
- 22 2 x 2
- 24 2 x 4

two LED Source

Refer to the LED Source Table on Page 2 for available options.

three Color Temperature

- 35 3500K
- 40 4000K
- 50 5000K

four CRI

- 80 Min 80 CRI
- 90 Min 90 CRI

five Door Material

- A Aluminum
- C Cold rolled steel, standard
- S 304 Stainless steel

six Door Finish

- R Brushed (Stainless steel only)
- W White

seven Voltage

- 120 120 V, 60 Hz
- 277 277 V, 60 Hz

eight Driver

- MIL MIL461 Tested and Certified
- Refer to HRS Series for dimming applications

nine Internal Lens

- 122 Optic Plus diffusing acrylic, standard
- 130 .125 in. LED diffusing Lexan

ten External Lens

- 00 No external lens
- 33 .125 in. clear polycarbonate

eleven Options

- CU Canadian UL Listing
- CP CCEA Chicago
- EM 12W LED EM standard
- Contact factory for lower outputs.
- FH Fuse and holder

Housing Material

- AH Aluminum
- SH Stainless steel

Modifications are available to meet custom requirements. Specifications and dimensions are subject to change without notice.

LED Life

>100,000

| LED Source (Box 2) | 4000K 80 CRI | | 4000K 90 CRI | | 5000K 80 CRI | | 5000K 90 CRI | | Input Watts |
|-----------------------|------------------|-----|------------------|-----|------------------|-----|------------------|-----|-------------|
| | Delivered Lumens | L/W | Delivered Lumens | L/W | Delivered Lumens | L/W | Delivered Lumens | L/W | |
| 1' x 4' Fixture | | | | | | | | | |
| 2W42 | 4125 | 134 | 3418 | 111 | 4243 | 138 | 3536 | 115 | 31 |
| 2W82 | 8066 | 127 | 6683 | 105 | 8296 | 131 | 6913 | 109 | 64 |
| 2' x 2' Fixture | | | | | | | | | |
| 4W45 | 4428 | 144 | 3669 | 119 | 4554 | 148 | 3795 | 123 | 31 |
| 4W89 | 8657 | 136 | 7173 | 113 | 8905 | 140 | 7420 | 117 | 64 |
| 6W133 | 12986 | 137 | 10760 | 113 | 13357 | 141 | 11131 | 117 | 95 |
| 2' x 4' Fixture | | | | | | | | | |
| 2W44 | 4299 | 139 | 3562 | 115 | 4421 | 143 | 3684 | 119 | 31 |
| 2W86 | 8404 | 131 | 6963 | 109 | 8644 | 135 | 7204 | 113 | 64 |
| 3W129 | 12606 | 133 | 10445 | 110 | 12966 | 136 | 10805 | 114 | 95 |
| 4W172 | 16808 | 132 | 13927 | 110 | 17289 | 136 | 14407 | 113 | 127 |
| 6W259 | 25213 | 132 | 20890 | 109 | 25933 | 136 | 21611 | 113 | 191 |

Photometric Data with 122 lens

33 lens multiplier

.86

MIL461 LED Driver

The L.C. Doane MIL461 driver is tested and certified to MIL461-F, but is compliant to 461G and all RE, RS, CE, and CS test protocol

- The tests encompass Radiated Emissions, Radiated Susceptibility, Conducted Emissions and Conducted Susceptibility
- L.C. Doane's MIL461F compliant drivers are tested by a recognized, independent 3rd party lab.

MIL461 driver:

- Use multiple driver/circuits to achieve light levels
- This solution assures the end user that ALL MIL461 requirements are met
- No RF Grid lens or RF Filtering required as the MIL461 is accomplished at the driver level

MIL-461 Certifications

- CE101
- CE102
- CS101
- CS106
- CS114
- CS116
- RE101
- RE102
- RS101
- RS103
- MIL-STD-1399-300B: 5.3.1-5.3.9