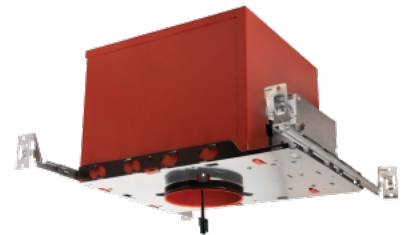


# 3" New Construction 2-Hour Fire Rated IC Airtight Housing



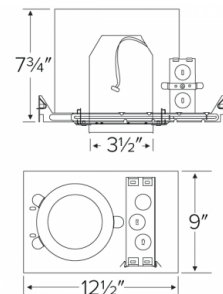
## Features

- IC Airtight for direct contact with insulation.
- Koto™ Commercial Housing: 120/277V 0-10V/Triac/ELV or 120V Triac/ELV with optional Emergency Battery Backup.
- Must be used with Commercial Construction Koto™ LED Light Engines (ELK19 or ELK21 Series).
- Lumen output based on module.
- 2-Hour Fire and Sound Rated.

## Specifications

<b>Wattage</b>	10.5W
<b>Lumens</b>	750 (ELK19) - 950 (ELK21) lm
<b>Voltage</b>	120/277V or 120V
<b>Dimmable</b>	Triac/ELV, 0-10V/Triac/ELV

## Dimensions



## Technical Details

### Construction:

- Double Wall IC Rated for direct contact with insulation. For use in IC and non-IC conditions.
- Housing adjusts in frame to accommodate up to 1 1/2" ceiling thickness.
- Airtight housing with gasket to restrict airflow in accordance with ASTM E-283 air-tight requirements.

### Installation:

- Designed for ceiling plenums where 2x8 joists or taller are used.
- High strength hanger bars can easily be nailed to joists.
- Suitable for T-grid and drop ceiling applications.
- See installation sheet for detailed information.

**Junction Box:** Positioned to accommodate straight conduit runs. Two 3/4" knockouts, Seven 1/2" trade size conduit knockouts, One 3/8" knockout. Four Pry-out knockout slots for easy romex installation.

**Hanger Bars:** Pre Installed hanger bars with True Nail easy installation in regular lumber, engineered lumber, and Laminated Beams. Integral T-bar slots for easy installation in T-Bars. Spans up 24" and can be repositioned 90°. Score lines allow for tool-free hanger bar size reduction. Integral leveling flange allows for single-person installation while easily aligning the housings with the joists.

### Electrical:

- Driver is rated for 120V and 277V input (120/277V).
- High Efficiency driver with a power factor > 0.9.

**Listings:** UL Listed for Damp Location and for Wet Location with select trims. UL Listed for Direct Contact with Insulation and Combustible Material. UL Listed for Feed Through.

## Product Numbers

Item	Description	Lumens	Watts	Voltage	Dimming
<b>ELK72FICA</b>	Koto™ 2-Hour Fire Rated ICA Housing	750 (ELK19) - 950 (ELK21) lm	10.5W	120V	Triac/ELV
<b>ELK73FICAD</b>	Koto™ 2-Hour Fire Rated ICA Housing	750 (ELK19) - 950 (ELK21) lm	10.5W	120/277V	0-10V/Triac/ELV

## Product Number Builder Example: ELK72FICA

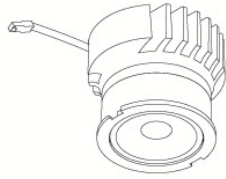
Koto™ 2-Hour Fire Rated ICA Housing	Voltage	Dimming
<b>ELK</b>		
	<b>72F</b> 120V	<b>ICA</b> Triac/ELV
	<b>73F</b> 120/277V	<b>ICAD</b> 0-10V/Triac/ELV

# Compatible Products

For use with Dedicated 3" Architectural ICA LED Housings



## Koto™ Architectural LED Light Engine



**Koto™ LED Light Engine**  
ELK19 - ELK21

PRODUCT NUMBER BUILDER				
Koto™ LED Light Engine	Lumens	Color Temperature	Beam Angle	
<b>ELK</b>				
<b>19</b>	750 - 850 lm	<b>27D</b> 2700K	(blank)	38° lens (Standard)
<b>21</b>	1100 - 1500 lm	<b>30D</b> 3000K	<b>-S</b>	18° lens
		<b>35D</b> 3500K	<b>-N</b>	25° lens
		<b>40D</b> 4000K	<b>-W</b>	60° lens
		<b>SD</b>	Sunset Dimming (ELK19 Only)	

### ACCESSORIES



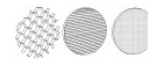
#### Lens

<b>EP731C</b>	18° Lens
<b>EP732C</b>	25° Lens
<b>EP733C</b>	38° Lens
<b>EP734C</b>	60° Lens

\*EP732C, EP733C, EP734C Included

#### Reflectors

<b>EP735C</b>	15°
<b>EP736C</b>	25°
<b>EP737C</b>	38°
<b>EP738C</b>	60°



#### Secondary Optics

<b>L45</b>	Hex Louver
<b>L46</b>	Linear Louver
<b>L47</b>	Spread Louver

## 3" Pex™ Twist-&-Lock Trims



**Deep Reflector**

**ELK3618**

Finishes:

(W, BB, BZ, B, C, H)



**Adjustable Gimbal**

**ELK3629**

Finishes:

(W, BB, BZ, B, C, H)



**Adjustable Pinhole**

**ELK3627**

Finishes:

(B, BB, BZ)

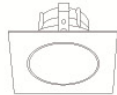


**Adjustable Baffle**

**ELK3693**

Finishes:

(W)

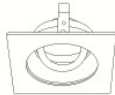


**Sq. Deep Reflector**

**ELK3318**

Finishes:

(W, BB, BZ, B, C, H)

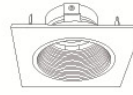


**Sq. Adjustable Gimbal**

**ELK3329**

Finishes:

(W, BB, BZ, B, C, H)



**Sq. Adjustable Baffle**

**ELK3393**

Finishes:

(W)



**Sq. Adjustable Pinhole**

**ELK3327**

Finishes:

(B, BB, BZ)

\*Finishes: **W** - All White, **BB** - All Black, **BZ** - All Bronze, **B** - Black Reflector w/White Ring, **C** - Chrome Reflector w/White Ring, **H** - Haze Reflector w/White Ring