

LSL10 AGAVE



60-BLP

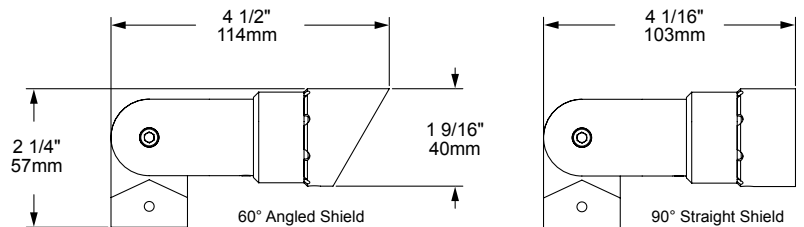
60-NI

The new LSL10 micro directional luminaire is a high-performance, low-energy LED accent light. Machined from Solid Brass bar, its artistic styling and precise machining make this fixture attractive and functional. The LSL10 Agave may look small, but at only 3 watts, it produces over 260 lumens making it highly efficient. The Agave is compatible with our entire AMS™ mounting system, offering a plethora of mounting possibilities.

See LSL6 and HSL11 for additional size and wattage options.

Features include:

- 3 Watts Up to 266 lumens
- Cree XLAMP® (XP-L) LED
- Self-aligning and Self Sealing Optic
- Interchangeable UV & Shock Resistant Silicone TIR Optic (Patent Pending)
- 2700K (80 & 90 CRI), 3000K (80 CRI), or Amber 585-595nm
- Thermally Integrated®, Field Serviceable LED Module
- Storm Drain™ Lens Drainage System
- Aurora Mount System (AMS™) Compatible
- 12V Integral Constant Current Driver (Remote 12V AC/DC Transformer Required)
- Dimmable to <10% (TRIAC/Forward Phase) via Compatible Transformer
- Compatible w/ 12V AC/DC MLV or ELV Transformers
- Solid Brass Construction



STORM DRAIN

Auroralight's proprietary Storm Drain™ system provides exceptional glare control together with enhanced drainage. The secret is our Exclusive "Linear Weep Hole" With eight or more such holes; water flushes out quickly and entirely with zero light trespasses. Auroralight, Engineering Solutions that make a difference!

AMS AURORA MOUNT SYSTEM

The Aurora Mount System (AMS™) features 2 axis of adjustment – 360° of fixture rotation at the mount and 230° at the solid brass knuckle. The ultimate in precision aiming without twisting or compromising wire integrity.

12V
THERMALLY INTEGRATED
STORM DRAIN

SEE NEXT PAGE FOR ORDERING INFORMATION



LSL10 AGAVE



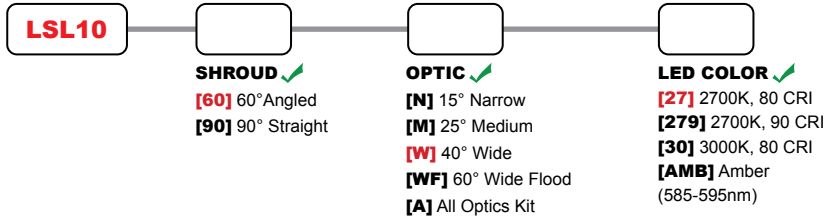
For smaller wattage and size options see **LSL6** and **LSL8**

For larger wattage and size options see **HSL20-LM**, **HSL16-LM**, and **HSL11-LM**

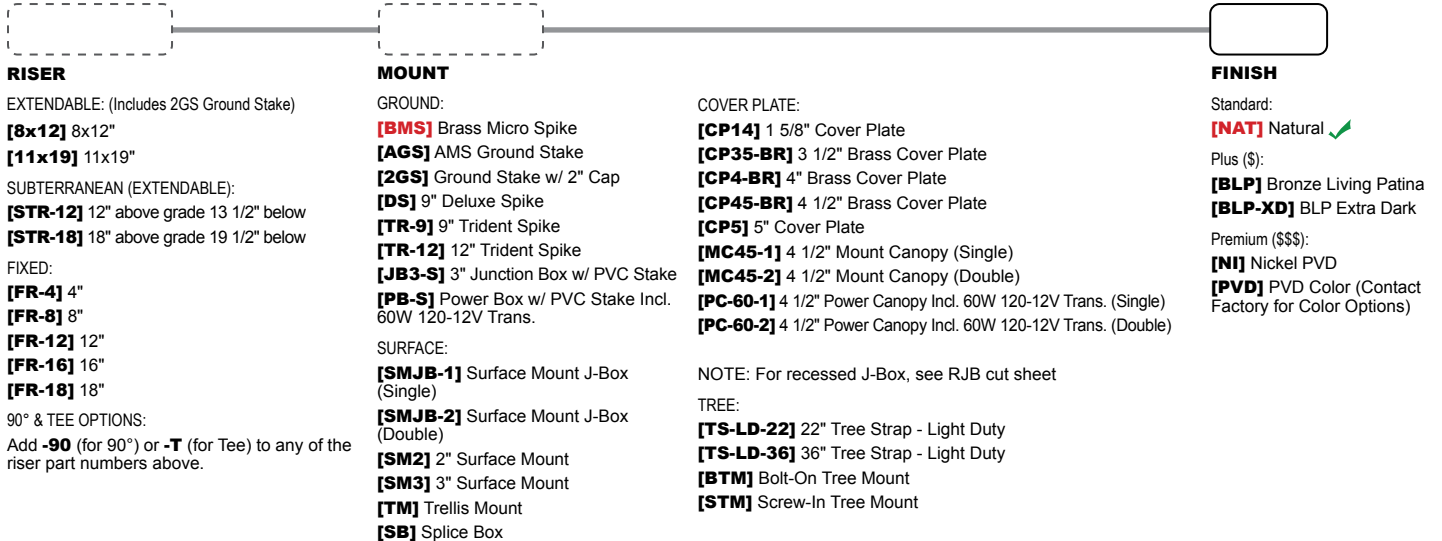
ORDERING GUIDE: Prefix **LSL10** L (LED) SL (SPOTLIGHT) 10 (SERIES)

□ INDICATES REQUIRED FIELD □ INDICATES OPTIONAL FIELD ✓ INCLUDED [_] QUICK SPEC (See Below)

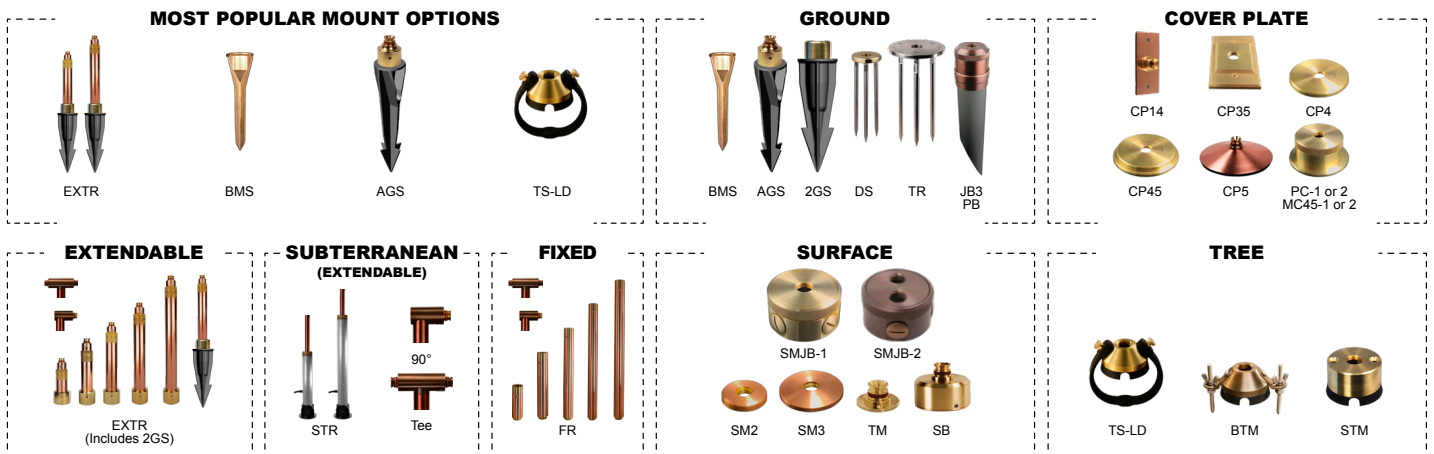
QUICK SPEC SKU **LSL10-60-20-W-27-BMS-NAT**



NOTE: For other CCT and CRI options, contact factory




NOTE: Universal Adapter Included w/ Fixture. Most common configurations listed above. See product cut sheets for all options.




PHOTOMETRIC OVERVIEW

Information based on 3000K. To download more in-depth IES photometric data, visit auroralight.com/product/lsl10-agave/

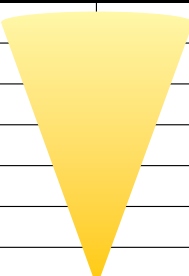
3W 3000K 15° (NARROW) 266.6 LUMENS • CBCP 2231 AURORALIGHT LSL10-N-30		
30 FT	2.48	7.89
26 FT	3.30	6.84
22 FT	4.61	5.79
18 FT	6.89	4.73
14 FT	11.4	3.68
10 FT	22.3	2.63
6 FT	62.0	1.58
Distance From Fixture	Footcandles	Beam Width



3W 3000K 25° (MEDIUM) 261.9 LUMENS • CBCP 1127 AURORALIGHT LSL10-M-30		
30 FT	1.25	12.4
26 FT	1.67	10.7
22 FT	2.33	9.08
18 FT	3.48	7.43
14 FT	5.75	5.78
10 FT	11.3	4.13
6 FT	31.3	2.48
Distance From Fixture	Footcandles	Beam Width



3W 3000K 40° (WIDE) 266.7 LUMENS • CBCP 616 AURORALIGHT LSL10-W-30		
30 FT	0.682	18.3
26 FT	0.908	15.9
22 FT	1.27	13.5
18 FT	1.90	11.0
14 FT	3.13	8.56
10 FT	6.14	6.11
6 FT	17.1	3.67
Distance From Fixture	Footcandles	Beam Width



3W 3000K 60° (WIDE FLOOD) 252.3 LUMENS • CBCP 249 AURORALIGHT LSL10-WF-30		
30 FT	0.276	27.0
26 FT	0.368	23.4
22 FT	0.514	19.8
18 FT	0.768	16.2
14 FT	1.27	12.6
10 FT	2.49	8.99
6 FT	6.91	5.40
Distance From Fixture	Footcandles	Beam Width

