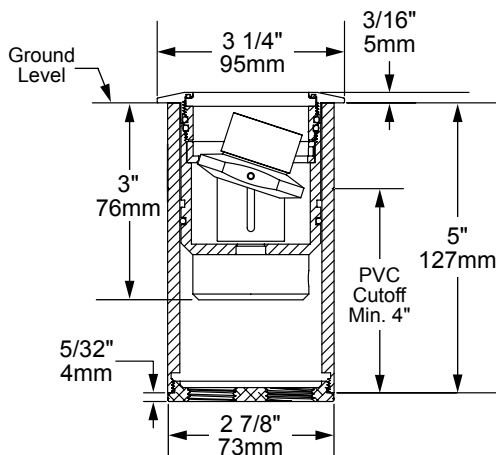


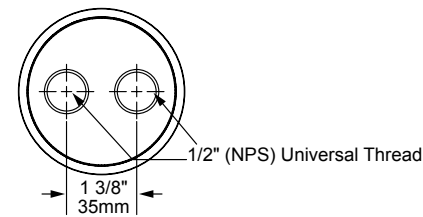
LMWL MICRO WELL



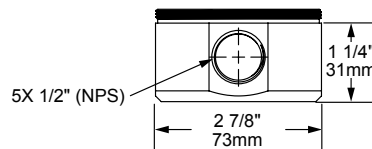
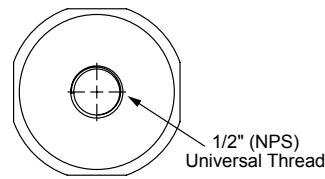
LMWL-BLP


Shown w/ [JBA]
J-Box Assembly
(Included)

[JBA] Mount Side View



[JBA] Mount Bottom View


[CHA] & [CHB] Conduit Hub
(Optional)


[CHA] & [CHB] Bottom View

The Award-Winning LMWL Micro Well light is a high performance LED luminaire. It is packed with features yet remains small in size. The light source can be raised or lowered up to one inch, tilted 20 degrees side to side, and rotated a full 360 degrees to provide superior aiming. New for 2021, It is now featuring our SDLA "small diameter, large aperture" bezel; Same amount of light with a smaller footprint.

See *LWL1*, *LWL2-F*, *LWL3-F*, *LWL3-SQ-F*, *LWL4* and *LWL5* for additional size and wattage options.

Features include:

- 3 Watts up to 192 lumens
- Cree XLAMP® (XP-L) LED
- 2700K (80 & 90 CRI) or 3000K (80 CRI)
- Thermally Integrated® and Field Serviceable LED Module
- IC Rated for Interior, Exterior and Wet Location Use
- 12V Integral Constant Current Driver (Remote 12V AC/DC Transformer Required)
- Dimmable to <10% (TRIAC/Forward Phase) via Compatible Transformer
- Compatible w/ 12V AC/DC MLV or ELV Transformers
- Drive-over Rated up to 6,000 lbs. When Installed w/ Stabilizer Accessory
- Solid Brass Construction
- Now Featuring SDLA (Small Diameter, Large Aperture Bezel)

**COPPER
CORE
TECHNOLOGY®**

Copper Core® is a registered trademark of Auroralight. It is synonymous with the mark of quality and integrity. It means that our products are built upon a superior foundation of Solid Copper, ensuring every critical part functions seamlessly together Thermally integrated® one component to the next. Auroralight manufactured without compromise, engineered with passion, in the USA.



12V



**WINNER
OF THE
INNOVATION
AWARD**



SEE NEXT PAGE FOR ORDERING INFORMATION



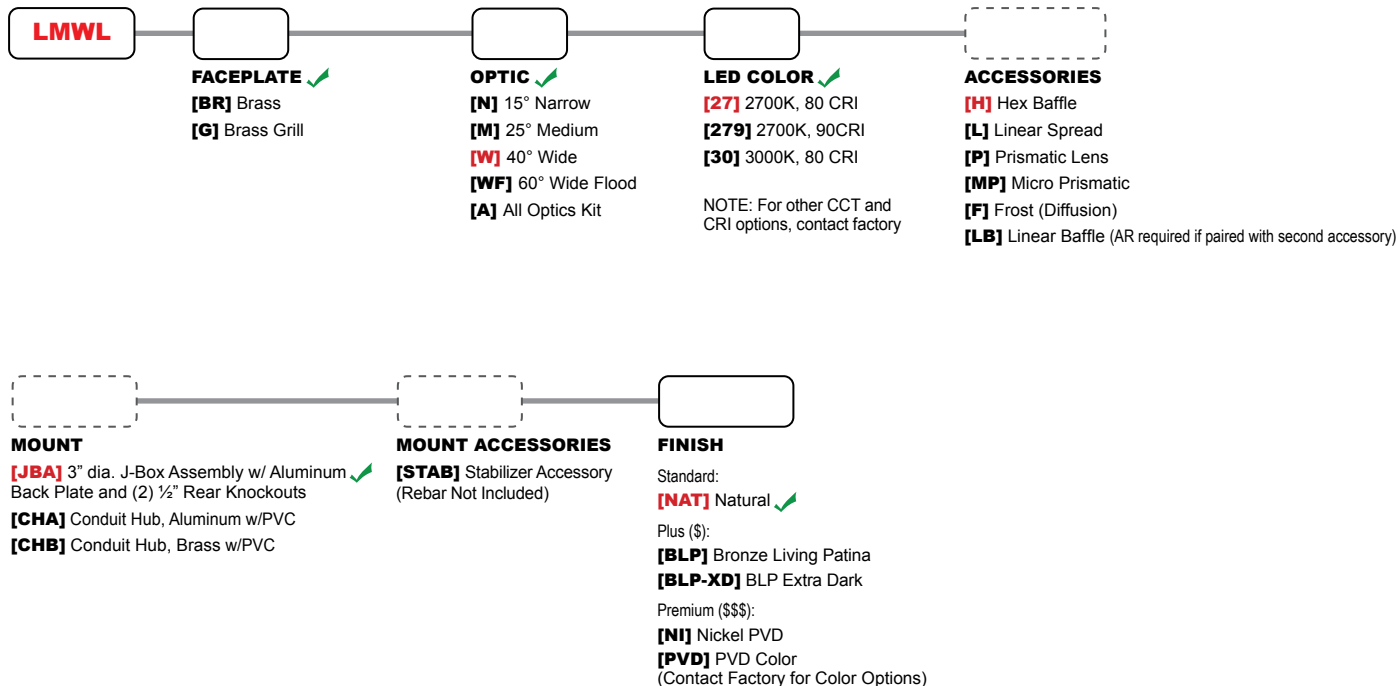
LMWL MICRO WELL



ORDERING GUIDE: ^{Prefix} **LMWL** L (LED) MWL (MICRO WELL LIGHT)

□ INDICATES REQUIRED FIELD □ INDICATES OPTIONAL FIELD ✓ INCLUDED [_] QUICK SPEC (See Below)

QUICK SPEC SKU **LMWL-W-27-H-JBA-NAT**



FACEPLATES



[BR]
Brass



[G]
Grill

MOUNTS



[JBA]
J-Box Assembly



[CHA]
Aluminum Conduit Hub



[CHB]
Brass Conduit Hub

MOUNT ACCESSORIES



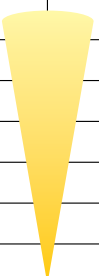
[STAB]
Stabilizer Accessory

LMWL MICRO WELL


PHOTOMETRIC OVERVIEW

Information based on 3000K. To download more in-depth IES photometric data, visit auroralight.com/product/lmwl-micro-well/

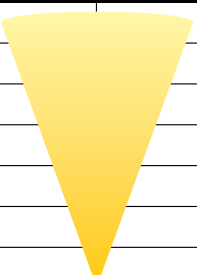
3000K 15° (NARROW) 163.6 LUMENS • CBCP 1813 AURORALIGHT LMWL-BR-N-30		
30 FT	2.01	7.48
26 FT	2.68	6.48
22 FT	3.75	5.48
18 FT	5.60	4.49
14 FT	9.25	3.49
10 FT	18.1	2.49
6 FT	50.4	1.50
Distance From Fixture	Footcandles	Beam Width



3000K 25° (MEDIUM) 192.0 LUMENS • CBCP 921 AURORALIGHT LMWL-BR-M-30		
30 FT	1.02	11.9
26 FT	1.36	10.3
22 FT	1.90	8.69
18 FT	2.84	7.11
14 FT	4.70	5.53
10 FT	9.21	3.95
6 FT	25.6	2.37
Distance From Fixture	Footcandles	Beam Width



3000K 40° (WIDE) 192.3 LUMENS • CBCP 471 AURORALIGHT LMWL-BR-W-30		
30 FT	0.492	20.5
26 FT	0.656	17.7
22 FT	0.916	15.0
18 FT	1.37	12.3
14 FT	2.26	9.56
10 FT	4.43	6.83
6 FT	12.3	4.10
Distance From Fixture	Footcandles	Beam Width



3000K 60° (WIDE FLOOD) 134.7 LUMENS • CBCP 183 AURORALIGHT LMWL-BR-WF-30		
30 FT	0.163	31.1
26 FT	0.218	27.0
22 FT	0.304	22.8
18 FT	0.454	18.7
14 FT	0.750	14.5
10 FT	1.47	10.4
6 FT	4.09	6.23
Distance From Fixture	Footcandles	Beam Width

