

SPECIFICATIONS

DESCRIPTION:

Compact low voltage LED rectangular step light.
Suitable for wet/damp/dry location installations.

MATERIAL:

Standard overall material is 6061 aluminum.

HL-1250 - Machined Aluminum

FINISH:

AA - Anodized Satin Aluminum

AP - Powder Coat Aluminum

BK - Powder Coat Black

BZ - Powder Coat Bronze

WT - Powder Coat White

LED OPTIONS:

Integral high output LED, warm white
(3000K CCT) standard, others available.

3LED - 3W LED

VOLTAGE:

12 - 12 VAC output transformer required, not included.

MOUNTING:

Suitable for all types of construction, including poured concrete.

ACCESSORIES:

Lenses

LA-125 - Lens for backlit lighting effect

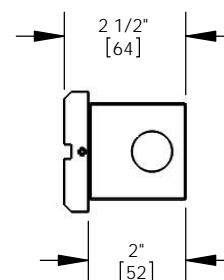
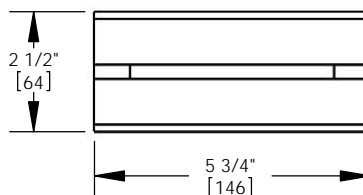
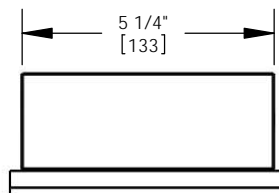
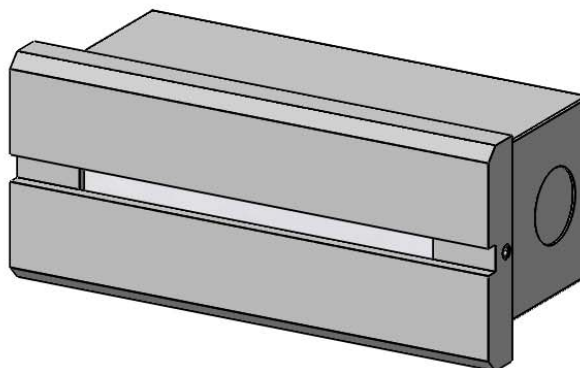
SAMPLE ORDER SPECIFICATION:

HL-1250-AA-3LED-12

RATING:

Wet/damp/dry location.

MADE IN THE USA



ORDER SPECIFICATION: _____ - _____ - _____ - _____ - _____
Fixture Finish Lamping Voltage Options/Access.

PROJECT:

APPROVED:

NOTE:

TYPE:



HEVI LITE, INC.

9714 Variel Ave, Chatsworth, CA 91311
Tel., (818) 341-8091 - Fax (818) 998-1986
Web Site <http://www.hevilite.com>

CATALOG NUMBER:

HL-1250