

SPECIFICATIONS

DESCRIPTION:

Compact MR16 square step light, with machined protective grill. Suitable for wet/damp/dry location installations.

MATERIAL:

Standard overall material is 6061 aluminum.

HL-155 - Machined Aluminum

FINISH:

AA - Anodized Satin Aluminum

AP - Powder Coat Aluminum

BK - Powder Coat Black

BZ - Powder Coat Bronze

WT - Powder Coat White

HALOGEN LAMPING OPTION:

Lamp Type - 12V halogen MR16 lamp, bi-pin
GX5.3 base, 50W max, not included (standard).

LED OPTIONS

Integral high output LED, warm white 85 CRI
(3000K CCT) standard, others available.

3LED - 3W LED - 180 lumens

8LED - 8W LED - 300 lumens

8LED-E - 8.4W LED - 565 lumens

OPTICS

3LED and 8LED:

SP - Spot, 12°

NF - Narrow Flood, 24°

FL - Flood, 36°

8LED-E:

SP - Spot 14°

NF - Narrow Flood, 25°

MF - Medium Flood, 30°

FL - Flood, 40°

VOLTAGE:

12 - 12 VAC output transformer required, not included.

MOUNTING:

Fixture is equipped with a 4.75" mounting plate and (2) mounting screws. Mounts directly to standard electrical junction boxes (HL-198-JB) or with optional pour housing (HL-45PH).

OPTIONS:

Lenses - Standard lens is diffused with internal half shield for reduced lamp glare.

90 - Linear spread lens

91 - Solite lens

93 - Prismatic lens

98 - Internal half shield for above lenses

Mounting Accessories

HL-45PH - Aluminum Pour Housing

HL-198-JB - Steel Octagonal Box w/Mud Ring

See fixture accessories for more information.

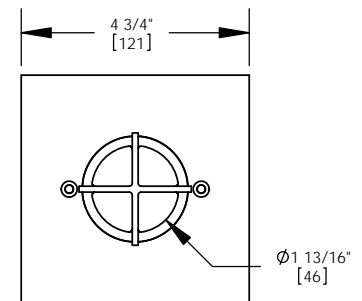
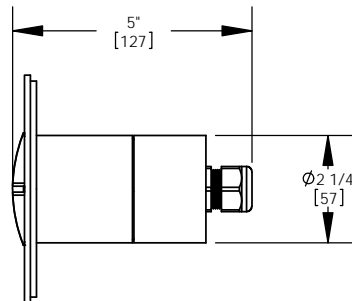
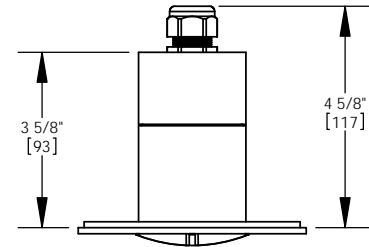
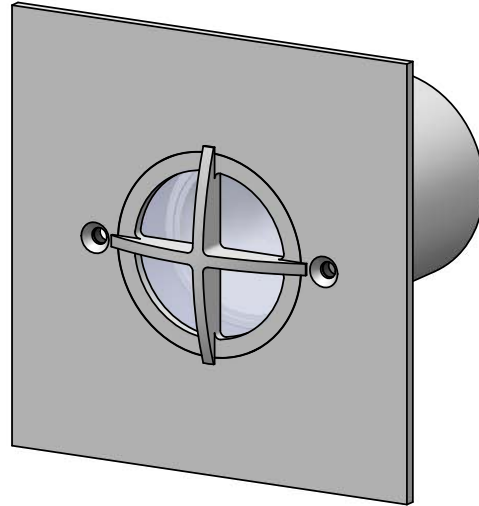
RATING:

Wet/damp/dry location.



Intertek

MADE IN THE USA



ORDER SPECIFICATION: _____ - _____ - _____ - _____ - _____
Fixture Finish Lamping Voltage Options/Access.

PROJECT:

APPROVED:

NOTE:

TYPE:



HEVI LITE, INC.

9714 Variel Ave, Chatsworth, CA 91311
Tel., (818) 341-8091 - Fax (818) 998-1986
Web Site <http://www.hevilite.com>

CATALOG NUMBER:

HL-155