

PROJECT NAME: _____

TYPE: _____

NOTES: _____

IK10 PLUS HIGH LUMEN SERIES

HIGH-BAY LED LUMINAIRE SPECIALIZING IN HIGH-ABUSE APPLICATIONS. INTENDED FOR GYMNASIUMS, NATATORIUMS, MANUFACTURING AND INDUSTRIAL FACILITIES, WAREHOUSES, CONVENTION CENTERS AND OTHER HIGH-CEILING APPLICATIONS.

OPTICS:

- WIDE 120° BEAM ANGLE FOR MAXIMUM UNIFORMITY
- DIFFUSE LENSING AVAILABLE IN CLEAR AND WHITE
- OPTIONAL POLYCARBONATE OR ACRYLIC LENSES
- WRAP-AROUND LENS OFFERS UP TO 10% UPLIGHT
- LED BARS ARE ROTATABLE FOR CUSTOM LIGHT DISTRIBUTION
- OPTIONAL NARROW REFLECTOR FOR AISLE APPLICATIONS

MECHANICAL:

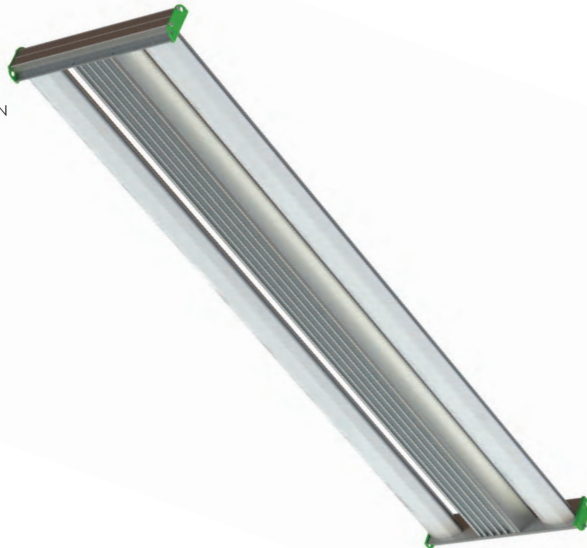
- EXCEEDS IMPACT RATING OF IK10
- EXTRUDED ALUMINUM CONSTRUCTION
- STAINLESS STEEL HARDWARE
- ISOLATED DRIVER CHANNELS
- THERMALLY INDEPENDENT HEAT SINK LED BARS
- BRIGHT DIP ANODIZED FOR CORROSION RESISTANCE
- AMBIENT TEMPERATURE RATING:
-40°F TO 150°F, -40°C TO 65.5°C

COMPONENTS:

- HIGH-OUTPUT SAMSUNG LED CHIPS
- HIGH-TEMP OSRAM DRIVERS

INSTALLATION:

- AIRCRAFT CABLE SUSPENSION
- SURFACE MOUNTING
- RIGID PENDANT
- CUSTOM MOUNTS AVAILABLE, CONTACT FACTORY



PERFORMANCE:

- 50,340 NOMINAL LUMENS (5000K, NO LENS)
- 328 WATTS
- 153 LUMENS PER WATT
- TM-21: L₇₀ >72,000 HOURS
- CALCULATED L₇₀ >147,000 HOURS SPACING

ELECTRICAL:

- 120-277VAC STANDARD / 347-480VAC OPTIONAL
- 0-10V, 10% DIMMING DRIVERS STANDARD

WARRANTY:

- 10-YEAR WARRANTY ON FIXTURE BODY
- 5-YEAR WARRANTY ON ELECTRONICS
- FOR SPECIAL REQUESTS, CONTACT FACTORY

FIXTURE DIMENSIONS:

- 48" L x (12-24)" W x 2.5" H
- 14-26 LBS SEE ASSEMBLY CONFIGURATIONS BELOW

LISTINGS AND RATINGS:

- UL 1598 FOR DRY, DAMP, WET, AND CANOPY LOCATIONS
- ARRA COMPLIANT (MADE IN AMERICA)
- IP 56 RATED
- UL EPH LISTED - NSF RATED
- DLC PREMIUM LISTED
- 3G VIBRATION RATING



LUX IK10P L 2 HO3 4'

| MFR | SERIES | OUTPUT | NUMBER OF BARS | ELECTRONIC CHANNELS | ASSEMBLY CONFIG. | MODULE | CRI CCT | LENGTH | VOLTAGE DIMMING | LENS | NARROW OPTICS | CORD | CONTROLS | EMERGENCY BACKUP | CHANNEL ACCESS | BAR AIMING | FINISH | MOUNTING | APPLI-CATION | CUSTOM FIXTURE OUTPUT |
|-----|--------|--------------|----------------|-------------------------------------|---------------------------------|--------------------|--------------------------|--------|--|--------------------------------|--|---|---|--|----------------|---|--|---|--|------------------------------------|
| LUX | IK10+ | L-HIGH LUMEN | 2 | S -SINGLE D -DOUBLE T -TRIPLE | A B C D E F G | HIGH OUTPUT GEN. 3 | 850 840 835 830 | 4' | 120-277V U10 10% dim U1 1% dim UX no dimming 347-480V H10 10% dim H1 1% dim HX no dimming | NL CA4 WA4 CP4 WP4 | NRW SECONDARY NARROW OPTIC MAY BE USED ON SOME OR ALL BARS OF FIXTURE. IF MIXED DISTRIBUTION IS REQUIRED, PLEASE COORDINATE WITH FACTORY TO SPECIFY | 3/10 4/10 5/10 6/10 WIRES 3 TO 6 LENGTH 10', 15', 20', 30' | DLH DAYLIGHT SENSOR OCC OCCUPANCY SENSOR D/O DAYLIGHT AND OCCUPANCY WCM WIRELESS CONTROL | EM 10 10W BATTERY EM 15 15W BATTERY | TOP BOT | DIR 0°NADIR IND 180°NADIR CLD CUSTOM LIGHT DISTRIBUTION COORDINATE WITH FACTORY FOR ALL CLD ORDERS. | STND MFHB CC END CAP CHANNEL LID HANGING BRACKETS BAR | CABLE: H10-18Y H10-18Y T H4P10 H4P10SS PENDANT: MH1P MH2P SPM SURFACE: SM UH2 UH4 SEE MOUNTING DETAILS (PG2) FOR AVAILABLE OPTIONS | ARCH AFH GEN GYM HNG ICE MFG NAT TC WHS | PLEASE NOTE DELIVERED LUMENS ABOVE |

CRI PERFORMANCE DATA

80 CRI - STANDARD/NOMINAL
90 CRI - 6% LIGHT LOSS
OTHER CRI AVAILABLE, CONTACT FACTORY

CCT PERFORMANCE DATA

5000K - STANDARD/NOMINAL
4000K - 4% LIGHT LOSS
3500K - 6% LIGHT LOSS
3000K - 8% LIGHT LOSS
OTHER CCT AVAILABLE, CONTACT FACTORY

CHANNEL AND ASSEMBLY CONFIGURATION:

| | | |
|----|--|-------------|
| SA | | 12'W, 14LBS |
| SB | | 12'W, 14LBS |
| DA | | 18'W, 20LBS |
| DB | | 18'W, 20LBS |
| TA | | 24'W, 26LBS |

CUSTOM CONFIGURATIONS AVAILABLE, CONTACT FACTORY

APPLICATION TYPE:

ARCH - ARCHITECTURAL
AFH - ARENA/FIELDHOUSE
GEN - GENERAL
GYM - GYMNASIUM
HNG - HANGAR
ICE - ICE RINK
MFG - MANUFACTURING
NAT - NATATORIUM
TC - TENNIS COURT
WHS - WAREHOUSE

FIXTURE "FINISH" DETAILS

STND-STANDARD:
-LUX GREEN HANGING BRACKETS
-BRIGHT DIP ANODIZED EXTRUSIONS
-QUALIFIES AS NATATORIUM RATED
-IF INSTALLED IN A NATATORIUM, LUX RECOMMENDS STAINLESS STEEL MOUNTS.

MFHB-HANGING BRACKETS:
-MILL FINISH HANGING BRACKETS
-BRIGHT DIP ANODIZED EXTRUSIONS

CC-CUSTOM COLOR:
-2MIL NATATORIUM-GRADE POWDERCOATED COMPONENTS IN ANY COLOR.
-PLEASE SPECIFY RAL NUMBER AND COMPONENTS TO BE FINISHED WHEN ORDERING.

LENS PERFORMANCE DATA

NL (NO LENS) - NOMINAL, NO LIGHT LOSS
CAx (CLEAR ACRYLIC) - 9% LIGHT LOSS
WAX (WHITE/FROSTED ACRYLIC) - 16% LIGHT LOSS
CPx (CLEAR POLYCARBONATE) - 14% LIGHT LOSS
WPx (WHITE/FROSTED POLYCARBONATE) - 22% LIGHT LOSS

CORD DATA

3 WIRE - SINGLE LEG ON/OFF SWITCH
4 WIRE - DUAL LEG SWITCH, OR SINGLE SWITCH WITH EMERGENCY BATTERY
5 WIRE - SINGLE LEG SWITCH WITH DIMMING
6 WIRE - DUAL LEG SWITCH WITH DIMMING OR SINGLE SWITCH WITH EMERGENCY BATTERY

CHANNEL ACCESS

TOP - FIXTURE CHANNEL ACCESSIBLE FROM ABOVE, NOT AVAILABLE ON SURFACE MOUNTS.
BOTTOM - FIXTURE CHANNEL ACCESSIBLE FROM BELOW.

PHOTOMETRIC DATA LUX-IK10P-L-2-SA-HO3-850-4-U10-CA4

LUMEN OUTPUT TABLE

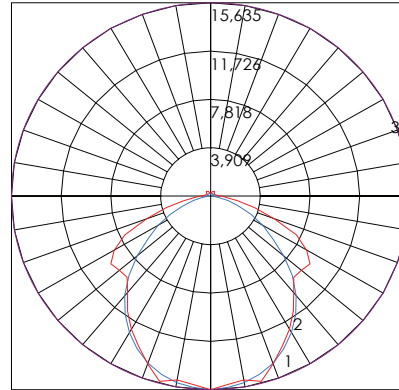
80+ CRI STANDARD

| Lens | 5000K | 4000K | 3500K | 3000K |
|---------------------------|--------|--------|--------|--------|
| NL (No Lens) | 50,340 | 48,326 | 47,320 | 46,313 |
| CAx (Clear Acrylic) | 45,809 | 43,977 | 43,061 | 42,145 |
| WAx (White Acrylic) | 42,286 | 40,594 | 39,748 | 38,903 |
| CPx (Clear Polycarbonate) | 43,292 | 41,561 | 40,695 | 39,829 |
| WPx (White Polycarbonate) | 39,265 | 37,695 | 36,909 | 36,124 |

ZONAL LUMEN SUMMARY

| Zone | Lumens | %Fixt |
|---------|--------|---------|
| 0-20 | 5,689 | 12.30% |
| 0-30 | 11,987 | 25.90% |
| 0-40 | 19,278 | 41.70% |
| 0-60 | 33,346 | 72.10% |
| 0-80 | 42,437 | 91.70% |
| 0-90 | 43,713 | 94.50% |
| 10-90 | 42,249 | 91.30% |
| 20-40 | 13,589 | 29.40% |
| 20-50 | 20,825 | 45.00% |
| 40-70 | 19,770 | 42.70% |
| 60-80 | 9,090 | 19.60% |
| 70-80 | 3,389 | 7.30% |
| 80-90 | 1,276 | 2.80% |
| 90-110 | 959 | 2.10% |
| 90-120 | 1,341 | 2.90% |
| 90-130 | 1,719 | 3.70% |
| 90-150 | 2,317 | 5.00% |
| 90-180 | 2,564 | 5.50% |
| 110-180 | 1,604 | 3.50% |
| 0-180 | 46,277 | 100.00% |

POLAR CANDELA GRAPH



LEGEND:

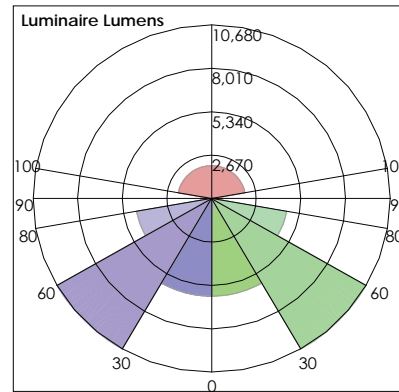
MAXIMUM CANDELA = 15635
LOCATED AT:
HORIZONTAL ANGLE = 0,
VERTICAL ANGLE = 0

#1: VERTICAL PLANE
THROUGH HORIZONTAL
ANGLES (0 - 180)
(THROUGH MAX. CD.)

#2: VERTICAL PLANE
THROUGH HORIZONTAL
ANGLES (90 - 270)

#3: HORIZONTAL CONE
THROUGH VERTICAL ANGLE
(0) (THROUGH MAX. CD.)

LCS GRAPH



FRONT:
LOW=5993.7
MEDIUM=10679.5
HIGH=4545.2
VERY HIGH=638.2

BACK:
LOW=5993.7
MEDIUM=10679.5
HIGH=4545.2
VERY HIGH=638.2

UPLIGHT:
LOW=556.7
HIGH=2007.0

BUG RATING:
B5-U5-G4

COEFFICIENTS OF UTILIZATION - ZONAL CAVITY METHOD

EFFECTIVE FLOOR CAVITY REFLECTANCE: 20%

| RC | 80 | | | | 70 | | | | 50 | | | | 40 | | | | 10 | | | | 0 |
|----|------|------|------|------|------|------|------|------|------|------|------|------|------|------|-----|-----|-----|-----|-----|--|---|
| | RW | 70 | 50 | 30 | 10 | 70 | 50 | 30 | 10 | 50 | 30 | 10 | 50 | 30 | 10 | 50 | 30 | 10 | 0 | | |
| 0 | 1.18 | 1.18 | 1.18 | 1.18 | 1.14 | 1.14 | 1.14 | 1.14 | 1.08 | 1.08 | 1.08 | 1.02 | 1.02 | 1.02 | .97 | .97 | .97 | .97 | .94 | | |
| 1 | 1.07 | 1.02 | .98 | .93 | 1.04 | .99 | .95 | .91 | .94 | .91 | .88 | .89 | .86 | .84 | .85 | .82 | .80 | .78 | .78 | | |
| 2 | .97 | .89 | .82 | .76 | .94 | .86 | .80 | .74 | .82 | .76 | .72 | .78 | .73 | .69 | .74 | .70 | .67 | .64 | .64 | | |
| 3 | .88 | .78 | .69 | .63 | .85 | .76 | .68 | .62 | .72 | .65 | .60 | .68 | .63 | .58 | .65 | .60 | .57 | .54 | .54 | | |
| 4 | .81 | .69 | .60 | .53 | .78 | .67 | .59 | .52 | .64 | .57 | .51 | .61 | .55 | .50 | .58 | .53 | .48 | .46 | .46 | | |
| 5 | .74 | .61 | .52 | .46 | .72 | .60 | .51 | .45 | .57 | .50 | .44 | .55 | .48 | .43 | .52 | .47 | .42 | .40 | .40 | | |
| 6 | .69 | .55 | .46 | .40 | .66 | .54 | .46 | .39 | .52 | .44 | .39 | .49 | .43 | .38 | .47 | .42 | .37 | .35 | .35 | | |
| 7 | .64 | .50 | .41 | .35 | .62 | .49 | .41 | .35 | .47 | .40 | .34 | .45 | .38 | .34 | .43 | .37 | .33 | .31 | .31 | | |
| 8 | .59 | .46 | .37 | .31 | .57 | .45 | .37 | .31 | .43 | .36 | .31 | .41 | .35 | .30 | .40 | .34 | .30 | .28 | .28 | | |
| 9 | .55 | .42 | .34 | .28 | .54 | .41 | .33 | .28 | .40 | .32 | .28 | .38 | .32 | .27 | .37 | .31 | .27 | .25 | .25 | | |
| 10 | .52 | .39 | .31 | .26 | .50 | .38 | .30 | .25 | .37 | .30 | .25 | .35 | .29 | .25 | .34 | .28 | .24 | .22 | .22 | | |

OPTION DATA

CONTACT FACTORY FOR DETAILED SPECIFICATIONS OF EACH OPTION. CONTACT FACTORY FOR USE IN 347/480V APPLICATIONS.

| DAYLIGHT HARVESTING & OCCUPANCY SENSOR | |
|--|---------------------|
| CONTROL TYPE | PIR/PHOTOCELL 1-10v |
| AMBIENT TEMPERATURE | 5°C TO 55°C |
| MOUNTING HEIGHT | 8' TO 40' |

| OCCUPANCY SENSOR - ON/OFF | |
|---------------------------|--|
| CONTROL TYPE | PIR LINE VOLTAGE |
| AMBIENT TEMPERATURE | -10°C TO 60°C, LOW TEMP OPTION AVAILABLE |
| MOUNTING HEIGHT | 15' TO 40' |

| WIRELESS CONTROL MODULE | |
|---|--|
| CONTACT FACTORY FOR WIRELESS CONTROL/SENSOR OPTIONS | |

| EMERGENCY BATTERY 10-WATT | |
|---------------------------|-------------------------------------|
| APPROX. LUMEN OUTPUT | 1,360 LUMENS WITH CA LENS AND 5000K |
| AMBIENT TEMPERATURE | 0°C TO 55°C |
| ILLUMINATION TIME | 90 MINUTES |

| EMERGENCY BATTERY 15-WATT | |
|---------------------------|-------------------------------------|
| APPROX. LUMEN OUTPUT | 2,040 LUMENS WITH CA LENS AND 5000K |
| AMBIENT TEMPERATURE | 0°C TO 55°C |
| ILLUMINATION TIME | 90 MINUTES |

MOUNTING DETAILS

CABLE MOUNTS:



HXX-18Y OR HXX-18Y T (AC CABLE 2-POINT)
 -"XX" DENOTES LENGTH IN FEET.
 AVAILABLE IN 10', 20', 30'
 -"T" AT END OF PART NUMBER
 DENOTES TOGGLE INSTEAD OF HOOK



H4PXX (AC CABLE 4-POINT)
 -"XX" DENOTES LENGTH IN FEET.
 AVAILABLE IN 10', 20', 30'
 -"SS" AT END OF PART NUMBER
 DENOTES NATATORIUM GRADE 316 STAINLESS STEEL.
 RECOMMENDED FOR NATATORIUM APPLICATIONS

PENDANT MOUNT:



SPM (SINGLE POINT MOUNT)
 -3/4" IP THREADED HUB, SUSPENDED JUNCTION BOX
 -FIXED LENGTH (3' OR 5') AIRCRAFT CABLE HANGERS
 PROVIDED WITH HOOK ENDS.
 -POWER CORD ORDERED SEPARATELY

MYER'S HUB PENDANT MOUNTS:




MH1P (MYERS HUB 1 POINT)
 -(1) 3/4" IP THREADED HUB PROVIDED
 -OTHER HUB DIAMETERS ARE AVAILABLE, CONTACT FACTORY
 -MACHINED MOUNTING POINT IN FIXTURE CENTER PROVIDED
 -STEM/THREADED ROD NOT PROVIDED
 -NOT AVAILABLE ON ALL MODELS AND OPTIONS,
 CONTACT FACTORY FOR DETAILS.

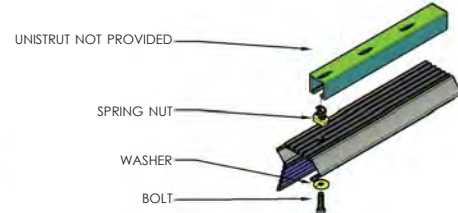

SURFACE MOUNTS:



SM (SURFACE MOUNT)
 -NO ADDITIONAL HANGING HARDWARE PROVIDED
 -FIXTURE MAY BE ANCHORED TO ANY SUITABLE SUBSTRATE
 THROUGH ELECTRONICS CHANNEL



UH2 (UNISTRUT HARDWARE, 2 POINT)
 -UNISTRUT HARDWARE INCLUDES SPRING-NUT AND BOLT
 -2 SETS WILL BE PROVIDED

UH4 (UNISTRUT HARDWARE, 4 POINT)
 -UNISTRUT HARDWARE INCLUDES SPRING-NUT AND BOLT
 -4 SETS WILL BE PROVIDED

