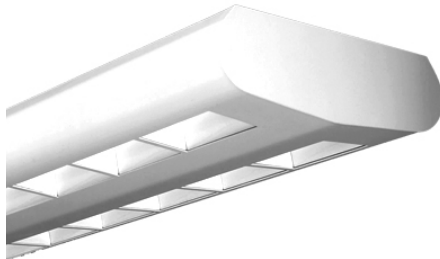


FINELITE

Series 9 Technical Sheet



Signal White is standard finish

DESCRIPTION

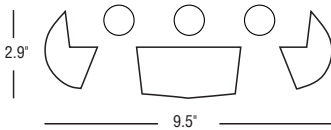
Windows measuring 3.75" by 2" in the Series 9 fixture expose the lamp. Distributing 80% of the light upward and 20% downward, the Series 9 is especially effective in classrooms, labs, conference rooms and large open spaces. Series 9 adds a new dimension to the ceiling while following Finelite's standards for superior quality, high performance, and affordable lighting solutions.

Date

Project

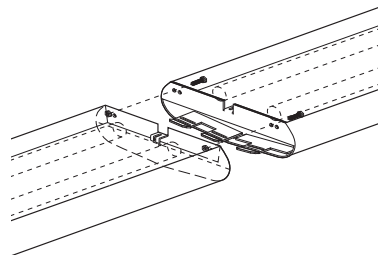
Type

Comments



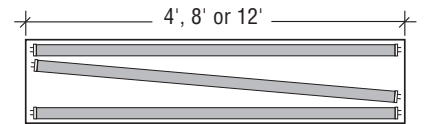
DIMENSIONS / LAMPING:

Available in 2 or 3 T8 lamp cross sections.



PRECISION JOINING:

Fixtures connect to each other with die-formed internal joiners. All hardware is located in the lamp compartment. No disassembly required.

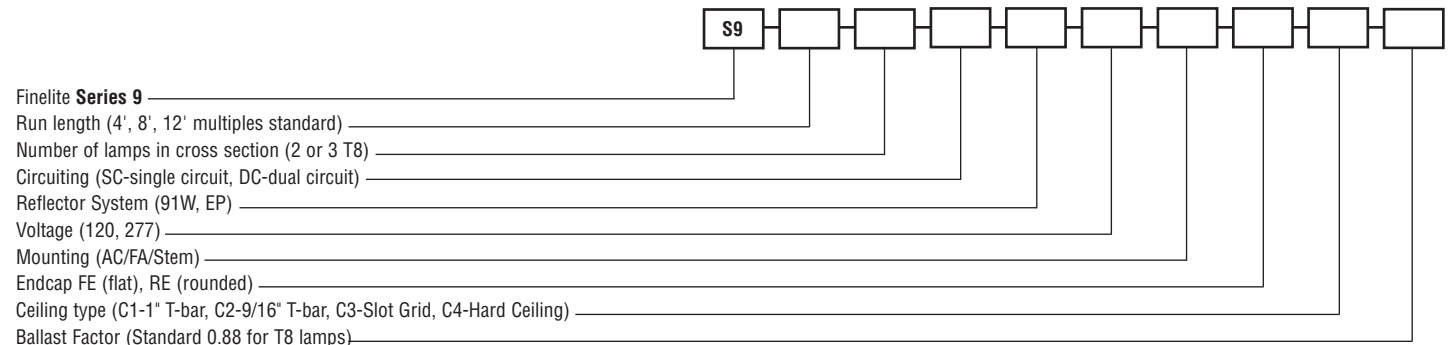


UNIQUE ANGLED-LAMP DESIGN:

Finelite's unique, angled-lamp design reduces the labor needed to attach fixtures to support cables. Meets all lamp and socket manufacturer's specifications.

ORDERING GUIDE

Sample Number: S9 - 32' - 2T8 - SC - 91W - 277 - AC 18" - FE - C1 - 0.88



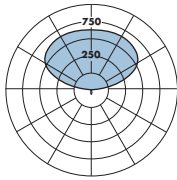
FINELITE

Series 9 Technical Sheet

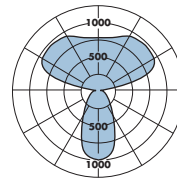
PHOTOMETRY



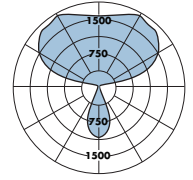
S9: 1 T8-EP
Efficiency: 90.6%
Peak Candela Value: 681@ 145°
LSI Report: 48480



S9: 2 T8-EP
Efficiency: 88.4%
Peak Candela Value: 1016@ 0°
LSI Report: 48445



S9: 3 T8-EP
Efficiency: 89.8%
Peak Candela Value: 1690@ 145°
LSI Report: 48444



CANDLEPOWER SUMMARY						
	0.0	22.5	45.0	67.5	90.0	Flux
0	43	43	43	43	43	
5	43	43	43	43	41	4
15	40	40	38	34	32	10
25	35	34	27	26	24	13
35	29	25	20	18	16	13
45	22	18	13	11	9	11
55	15	11	8	7	6	8
65	7	7	5	5	4	6
75	4	4	4	3	3	4
85	2	2	2	2	2	3
90	0	1	3	2	2	
95	30	69	73	76	77	75
105	133	250	277	281	278	265
115	256	350	447	488	492	411
125	371	435	533	597	614	460
135	472	510	586	643	665	445
145	554	578	623	665	681	389
155	617	631	650	671	681	301
165	658	665	669	673	676	189
175	677	681	678	673	674	65
180	677	677	677	677	677	

CANDLEPOWER SUMMARY						
	0	22.5	45	67.5	90	Flux
0	1016	1016	1016	1016	1016	
5	1004	1005	1000	994	993	94
15	922	915	890	866	854	249
25	801	773	678	596	574	315
35	664	600	442	346	328	295
45	506	406	255	209	196	234
55	328	229	147	126	120	164
65	146	110	84	75	72	96
75	61	52	42	38	37	49
85	15	15	13	13	13	16
90	0	4	8	7	10	
95	28	135	164	178	176	165
105	135	331	535	571	578	475
115	285	439	665	853	903	632
125	427	577	742	849	906	635
135	553	642	810	892	949	597
145	660	691	843	942	963	515
155	745	748	818	880	910	380
165	800	797	800	808	819	229
175	826	825	824	819	818	78
180	825	825	825	825	825	

CANDLEPOWER SUMMARY						
	0	22.5	45	67.5	90	Flux
0	1077	1077	1077	1077	1077	
5	1066	1067	1062	1055	1052	100
15	978	973	942	910	896	264
25	851	821	718	635	607	332
35	700	628	467	368	347	311
45	535	429	272	219	204	247
55	348	243	157	134	126	173
65	155	117	88	79	74	100
75	64	54	44	40	38	50
85	15	15	13	13	11	16
90	0	2	7	8	7	
95	56	181	183	191	173	191
105	286	589	794	785	768	708
115	559	815	1129	1339	1384	1052
125	820	1044	1305	1481	1551	1123
135	1054	1188	1436	1574	1653	1071
145	1248	1308	1508	1652	1690	931
155	1401	1420	1513	1594	1635	700
165	1500	1505	1512	1524	1542	430
175	1545	1551	1545	1536	1536	147
180	1547	1547	1547	1547	1547	

— Refer to www.finelite.com for additional photometry and product information.

SPECIFICATIONS

CONSTRUCTION: Body is 20-gauge die-formed steel with 18-gauge die-formed internal joiner system, plug-together wiring standard. All components are hard-tooled to tolerances of 0.010". Precision-formed windows 3.75" by 2" expose the lamp on the bottom side of the fixture in two parallel columns. Finish 91% reflective white aluminum standard.

ENDCAPS: Flat 18-gauge die-formed steel endcaps standard. Optional: Injection molded sculpted endcap "Georgia Gulf-8150" white special purpose PVC compound. V094 and L5 rated, UV stabilized with anti-static compound added. Subjected to test ASTM D-635, with no exposed fasteners, holes or knockouts. RE=Rounded Endcap. FE =Flat Endcap.

REFLECTORS: Die-formed prepainted aluminum, 91% reflective white. Optional: Extended Performance Reflector System.

SUPPORT CABLES: Plated steel cable and hardware.

MOUNTING OPTIONS: Semi-adjustable aircraft cable, (AC) ± 0.5" in lengths of 12", 15", 18", 21", 24", 27", 30", and 36". Order length, e.g., AC 18". Optional Adders: fully adjustable aircraft cable (FA) in lengths up to 250". Rigid stems (Stem).

FINISHES: Finelite Signal White standard. Optional Adders: 185 colors available from Tiger Drylac's RAL color chart.

LAMPING: Available in 2 or 3 T8 lamp cross sections.

BALLAST: Electronic instant-start ballast <10% THD, 0.88 BF is standard. Specify ballast factor if not standard (contact factory). Optional adders: rapid-start ballasts, 347V, emergency battery packs, dimming ballasts (controls by others).

FEED: 18-gauge straight cord. 14-gauge feed cord used when fixture current exceeds 5 amps. Optional Adders: Coil Cord Feed, Rigid Stem Feed.

ELECTRICAL: 120 or 277V prewired. Fixture and electrical components are UL and CUL listed and fixture will bear UL and CUL labels. Optional Adders: dual circuit, emergency circuits, emergency battery packs.

LENGTHS: 4', 8', and 12' section lengths can be combined to make longer runs. Contact factory for additional lengths.

WEIGHT: Fixture weight = 3.5 lb/ft.

LABELS: Fixture and electrical components are ETL listed conforming to UL 1598 in the U.S.A., and Canada; ETL listed to certified CAN/CSA C22.2 No. 250.0. Fixtures will bear ETL labels.