

# KRIO-IN

high power

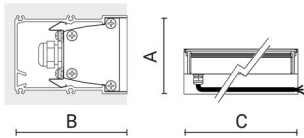
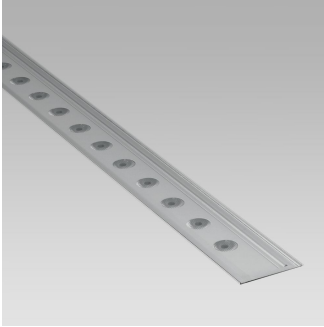


Arcluce Code

**O-KR0213US-210**

Code Ref.

**0766006C-830-21US**



## TECHNICAL INFORMATION

**Light source:** LED, 3000K, 26W, 2050lm, CRI>80

**Light efficiency:** 83lm/W

**Power luminaire:** 24W, 2000lm

**LED life time:** > 60000h - L80 - B20 (Ta 25°C)

**High colour consistency:** < 3 SDCM

**Wiring:** VCC 24V

**Optic:** narrow 10°

**Color:** Aluminium - 21

**Weight:** 7.05 lb

**Size:**  
A: 2" 17/32  
B: 3" 5/8  
C: 27" 9/16

IP67



IK07



## Appliance

- Extruded aluminium body.
- Die-cast aluminium caps (EN 47100).
- Double layer polyester powder paint resistant to corrosion and salt spray fog.
- Silicone rubber gaskets.
- AISI 316 stainless steel external screws.
- PMMA lenses for LEDs.
- Screen made of 5/16" thermal-shock resistant tempered glass.
- 1100lb static load capacity.
- Can be walked over.

## Installation

- Recessed installation.
- M16 engineering plastic cable gland.
- Steel spring clips.
- Supplied with power cable (10').
- Extruded aluminium recessed box.

## Note

- Amber color LED on request
- 2700K on request

