

# SLA20C/SLA20C-2

CONTEMPORARY ARMS

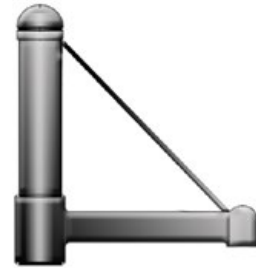
DATE:	LOCATION:
TYPE:	PROJECT:
CATALOG #:	

## AAL ARMS

### SPECIFICATIONS

#### CONSTRUCTION

- The arm shall be of one piece unitized aluminum construction, fully welded and assembled. The slip fitter shall be cast aluminum with an internal wireway and pole stop. The arm shall be prewired with a quick connector for easy installation.
- The arm shall have a cast aluminum fitter welded to the top of the arm(s) for attaching the fixture. The fixture shall be mounted with three stainless steel bolts through the top of the arm fitter into the fixture. The attachment point shall have a silicone pad for sealing the fixture to arm connection.
- The arm shall slip over a 4"/100mm or 5"/125mm diameter pole or tenon. The cast aluminum slip fitter shall have six stainless steel cup point set screws for securing the arm to the pole or tenon.



### ORDERING GUIDE

CATALOG #	Example: SLA20C-BLT
-----------	---------------------

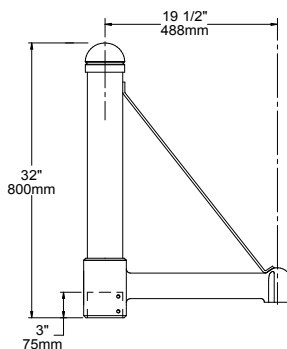
#### HOUSING

Arm		Color	
SLA20C	Slips over 4" pole. Weight: 15 lbs. EPA: 1,30	BLS	Black Gloss Smooth
SLA20C-2	Twin arms, slips over 4" pole. Weight: 26 lbs. EPA: 1.94	BLT	Black Matte Textured
		DBS	Dark Bronze Gloss Smooth
		DBT	Dark Bronze Matte Textured
		GTT	Graphite Matte Textured
		LGS	Light Grey Gloss Smooth
		LGT	Light Grey Matte Textured
		PSS	Platinum Silver Gloss Smooth
		VGT	Verde Green Matte Textured
		WHS	White Gloss Smooth
		WHT	White Matte Textured
		Color Option	
		CC <sup>1</sup>	Custom Color

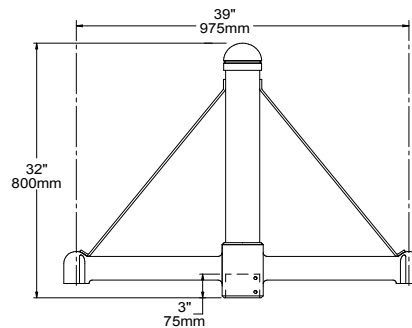
Notes:

- 1 Consult factory for custom color, marine and corrosive finish

### DIMENSIONS



SLA20C (4" pole)



SLA20C-2 (4" pole)