

4" LED Light Engine with Trimless Reflector Square

The perfect lighting solution for high-end residential and light commercial projects.



Features

- High efficacy LED module.
- Triac/ELV/0-10V dimming.
- Must be used with ELCO 4" Cedar™ System Housings.
- Life span of 50,000 hours L70.
- USA designed and assembled.
- Limited 5 year warranty.
- Spackle frame included.
- 2 at the end of the item number denotes Generation 2.
Please note Gen 2 and Gen 1 are not cross compatible.

Specifications

Wattage	8.76W
Lumens	850 lm
Color Temp.	2700K - SunsetK
Lamp Type	LED
Beam Angle	60° - 60°
CRI	93+
Damp Location	Listed

Options



All White



All Black



All Bronze

Technical Details

Optics: Frosted polycarbonate module lens diffuses light evenly throughout while reducing glare with LED technology.

Trim Construction: Reflector is two piece trim for maximum color versatility. Design allows for minimal glare and a strong glare cut-off. Trim is constructed of metal for lasting durability.

Installation: Must be installed on a Cedar™ System housing with compatible lumen rating. Frames are available for New Construction and Remodel as IC or non-IC.

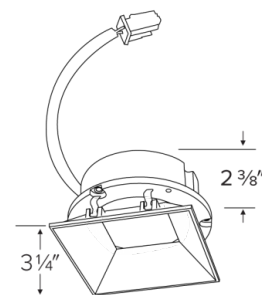
LED Technology:

- Extremely accurate Color Rendering Index of 93+.
- Efficacy of 97 lumens per watt.
- Lumen Maintenance of 50,000 hours L70 Life based on LM80 standardized test results.
- Superior Thermal Management by utilizing ELCO Red heat sink.
- Instant On to Full Brightness technology.
- No LED pixilation.

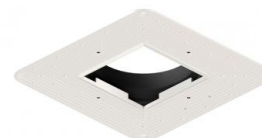
Listings:

- UL Listed for Wet Location.
- RoHS Compliant.

Dimensions



Spackle Frame Included



Product Numbers

Item	Lamp type	Lumens	CCT	Watts	Beam Angle
E444C0827W2, E444C0827BZ2, E444C0827B2	LED	850 lm	2700K	8.76W	60°

Item	Lamp type	Lumens	CCT	Watts	Beam Angle
E444C0830W2, E444C0830BZ2, E444C0830B2	LED	850 lm	3000K	8.76W	60°
E444C0835W2, E444C0835BZ2, E444C0835B2	LED	850 lm	3500K	8.76W	60°
E444C0840W2, E444C0840BZ2, E444C0840B2	LED	850 lm	4000K	8.76W	60°
E444C0850W2, E444C0850BZ2, E444C0850B2	LED	850 lm	5000K	8.76W	60°
E444C08SDW, E444C08SDBZ, E444C08SDB	LED	850 lm	SunsetK	8.76W	60°

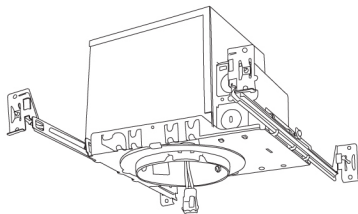
Product Number Builder

Example: **E444C0827W2, E444C0827BZ2, E444C0827B2**

ELCO 4" Trimless Square	Lumens	Color Temp.	Finish	Generation
E444C	08 850 lm	27 2700K 30 3000K 35 3500K 40 4000K 50 5000K SD Sunset	W All White BZ All Bronze B All Black	Gen 1 2 Gen 2

For use with 4" Cedar™ Trimless Light Engines

4" Cedar™ Dedicated Trimless LED ICA Housings



4" IC Housing
New Construction

CAT NO.	SPECIFICATIONS
E4TL	Up to 1600lm

PRODUCT NUMBER BUILDER				
Housing Type	Lumen	IC Airtight	Dimming	Optional
E4TL		ICA		
	08 850 lm		(Blank) 120V Triac/ELV	EM1 Emergency Backup up to 700 lm
	12 1250 lm		D 120/277V Triac/ELV/0-10V	EM2 Emergency Backup up to 1100 lm
	16 1600 lm		SD Sunset	
			L Lutron	