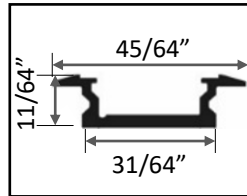


# CT01 | Recessed Extrusion



The CT01 is a compact recessed extrusion made from high quality anodized aluminum, perfect for applications in small or narrow spaces.



## Product Detail:

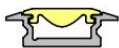
Material: Extruded Aluminum  
Color: Anodized Silver  
Size in inch: L  $78 \frac{3}{4}$  x W  $\frac{31}{64}$  x H  $\frac{11}{64}$   
Customization: Cut to specified length

## Applications:

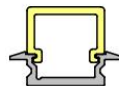
- Recessed with Trim
- Transition Wall/Ceiling
- Hallways
- Millwork
- Narrow Spaces
- Handrail
- Under Cabinet
- Vanity
- Furniture
- Shelf

## Compatible Lens

**CT99-CL60**  
60° Clear Lens



**CT99-DL**  
Satin Drop Lens



**CT99-AL**  
Asymmetrical Lens, 5°x80°



## Compatible LED Tapelight

Product	Output (~lm/ft)	LEDs/ft	Consump. (watt/ft)	Efficacy (~lm/watt)	CRI	Voltage	Max Run Length	Cut Increment
---------	-----------------	---------	--------------------	---------------------	-----	---------	----------------	---------------

### Vienna (High End)

L90	90	36	0.73	123	>80	24	75'	2"
L180	180	36	1.62	111	>80	24	47'	2"
L270	270	36	2.7	108	>80	24	34'	2"
RGB	Max 110	18	2.2	N/A	N/A	24	20'	4"
Tunable White	460	72	4.12	111	>80	24	30'	2"

### Florence (Mid-Range)

L200	200	36	1.6	125	>90	24	55'	2"
L360	360	36	2.9	124	>90	24	42'	2"

### Athens (Economy)

L240	240	36	2.1	117	>90	24	26'	2"
------	-----	----	-----	-----	-----	----	-----	----

# CT01 | Recessed Extrusion



## Ordering Code Template: CT01 + Tapelight + Accessories

Extrusion	Lens	TL Line	Lumen Output	IP	CCT	End Cap	Mounting
-----------	------	---------	--------------	----	-----	---------	----------

## Ordering Code: CT01 + Tapelight + Accessories

CT01	- DL	- F	- L200	IP00	CT35	- EC	- MC
------	------	-----	--------	------	------	------	------

Extrusion	Lens	Tapelight			End Cap	Mounting	
CT01	CL60 - 60° Lens DL - Drop Lens AL - Asymm. Lens	V – Vienna	L90 – 90 lm/ft	IP00	CT27 - 2700K CT30 - 3000K CT35 - 3500K CT40 - 4000K	EC – End Cap ECD – End Cap for Drop Lens	MC – Mounting Clip
			L180 – 180 lm/ft				
			L270 – 270 lm/ft	CT27 - 2700K			
		RGB - RGB	CT30 - 3000K				
		TW - Tunable White	CT40 - 4000K				
		F – Florence	L200 – 200 lm/ft	IP00			
L360 – 360 lm/ft	IP66						
A – Athens			L240 – 240 lm/ft	IP00	CT27 - 2700K		
	IP66	CT30 - 3000K					
		CT35 - 3500K					
CT40 - 4000K							

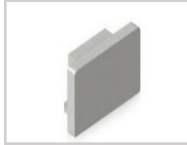
## Accessories

CT01/02-EC



End Cap

CT01/02-ECD



End Cap for  
Drop Lens

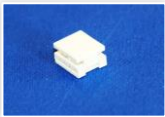
CT01/02-MC



Mounting Clip

## Connectors *(applicable with Florence and Vienna)*

CON-S



Splice connector

CON2-JC



Jumper Cable +  
2" cable

CON20-JC



Jumper Cable +  
20" cable

CON20-PF



Power Feed for  
white tapelight +  
20" cable

CON20RGB-PF



Power Feed for  
RGB tapelight +  
20" cable

Customization	LN20-CUST	EX20-CUST	M20-CUST	E20-CUST	E20-CUST-C
Cutting lens to specified length	✓				
Cutting extrusion to specified length		✓			
Miter corner extrusion and diffuser			✓		
Cutting extrusion, diffuser, and tapelight				✓	✓
Cutting extrusion, diffuser, and tapelight to 1-2 ft					
Cutting extrusion, diffuser, and tapelight to 3-4 ft					
Cutting extrusion, diffuser, and tapelight to 5-6 ft					
Installing the tapelight into the extrusion				✓	✓
Adding strain relief and power feed				✓	✓
Adding strain relief and power feed w/ heat sink tube					
Mounting end caps				✓	✓
Mounting and sealing end caps					
Customize to specified color					✓
Solder 4 ft lead wire				✓	✓
Filling extrusion w/ clear material => 2 ft submersible					
Final function and quality inspection	✓	✓	✓	✓	✓

## Power Supply Ordering Code

TR + 50 + IP00 = Non-Dimming, 50 watt, IP00, 88-264V output, 24V

1 - Model	2 - Power	3 - IP	Input	Output	Dimension (Inch) LxWxH
<b>TR = Non-Dimming</b>	<b>50</b> = 50 watt <b>75</b> = 75 watt <b>100</b> = 100 watt <b>150</b> = 150 watt	<b>IP00</b> = Indoor	88-264V	24V	3.90 X 3.82 X 1.42 5.08 X 3.82 X 1.50 6.26 X 3.82 X 1.50 7.84 X 3.85 X 1.50
	<b>12</b> = 12 watt <b>16</b> = 16 watt <b>25</b> = 25 watt <b>35</b> = 35 watt	<b>IP42</b> = Indoor	90-264V		3.03 X 1.57 X 1.14 3.03 X 1.57 X 1.14 3.31 X 2.24 X 1.16 3.31 X 2.24 X 1.16
	<b>20</b> = 20 watt <b>35</b> = 35 watt <b>60</b> = 60 watt <b>100</b> = 100 watt	<b>IP67</b> = Outdoor	90-264V		4.65 X 1.38 X 1.02 5.83 X 1.57 X 1.18 6.40 X 1.67 X 1.26 7.48 X 2.05 X 1.46
<b>DTR = Dimming (0-10V)</b>	<b>16</b> = 16 watt <b>25</b> = 25 watt <b>40</b> = 40 watt <b>60</b> = 60 watt <b>90</b> = 90 watt <b>100</b> = 100 watt <b>120</b> = 120 watt <b>150</b> = 150 watt <b>185</b> = 185 watt <b>240</b> = 240 watt <b>320</b> = 320 watt <b>600</b> = 600 watt	<b>IP67</b> = Outdoor	90-305V	24V	5.83 X 1.57 X 1.26 5.83 X 1.57 X 1.26 6.40 X 1.70 X 1.26 6.40 X 1.70 X 1.26 6.34 X 2.40 X 1.42 8.66 X 2.68 X 1.53 8.66 X 2.68 X 1.53 8.97 X 2.68 X 1.58 8.97 X 2.68 X 1.58 9.88 X 2.68 X 1.58 9.92 X 3.54 X 1.72 11.02 X 5.67 X 1.91
<b>DTR – FP = Dimming (Forward Phase)</b>	<b>20</b> = 20 watt <b>40</b> = 40 watt <b>60</b> = 60 watt <b>75</b> = 75 watt <b>96</b> = 96 watt	<b>IP67</b> = Outdoor	120V	24V	4.92 X 1.97 X 0.77 4.92 X 1.97 X 0.77 4.92 X 1.97 X 0.77 4.92 X 1.97 X 0.77 4.92 X 1.97 X 0.77