

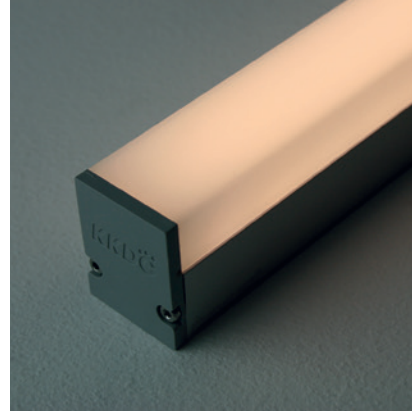
Linear

LiNi Glow XL 504

Fixture Guide

KKDÖ

Indoor | Surface | Mid output up to 750lm/m (229lm/ft)

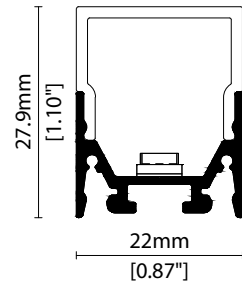


Key applications

- ✓ Architectural detail
- ✓ Ceiling
- ✓ Cove lighting
- ✓ Indirect lighting
- ✓ Interior
- ✓ Mirror back lighting
- ✓ Orientation lighting
- ✓ Shelving display
- ✓ Under bench
- ✓ Under cabinet

Key features

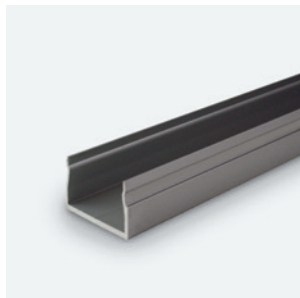
- ✓ Custom lengths
- ✓ Diffusion: Homogenous
- ✓ Direct view
- ✓ Extensive CCT range
- ✓ Form factor: Medium
- ✓ IP40
- ✓ Output mid



MOUNTING METHODS



KKCP-11 Concealed clip



KKCR-01-1000 Cable raceway (1000mm)
KKCR-01-2000 Cable raceway (2000mm)
KKCR-01-3000 Cable raceway (3000mm)



KKJT-02 Joining bar

Linear

LiNi Glow XL 504

Specification sheet



Dimension	H28/W22/L111-2011mm (H1.1/W0.87/L4.37-79.17in)
PCB increment	100mm increment/2000mm max (3.94in increment/78.74in max)
LED pitch	16.7mm - 60LED/m (0.66in - 18LED/ft)
Chip	s/e-line Toyoda Gosei k-line Toyoda Gosei or Equivalent
Beam angle	156° (Diffused Cover)
Colours	s/e-line 1900K/2100K/2300K/2500K/2700K/3000K/3500K/4000K/5000K Single colours: Red/Green/Blue/Orange/Amber k-line 1900K/2100K/2300K/2500K/2700K/3000K/3500K/4000K/5000K
Bin/Step	s-line 2-step MacAdam ellipse e/k-line 3-step MacAdam ellipse
CRI	≥ 90
Lifetime	50,000 hours @ 25°C (50,000 hours @ 77°F)
Operating temp	T _a = -25 to 60°C (T _c max = 72°C) T _a = -13 to 140°F (T _c max = 161.6°F)
IP rating	IP40
Finish	Silver anodised
Cover/lens	Diffused
Mounting	Surface mounting via concealed clips or cable raceway
Power feed	Hardwire tails or male/female connectors
Control	0-10V/1-10V/DMX/DALI



LED Grading Key

Exclusive Grade

s s-line*	*KKDC tuned CCT range
2-step CCT range	
e e-line*	
3-step CCT range	

Base Grade

k k-line	3-step commercial range Energy Star CCTs
-----------------	---

PERFORMANCE DATA @ 3000K

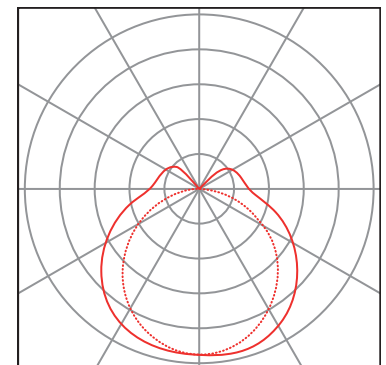
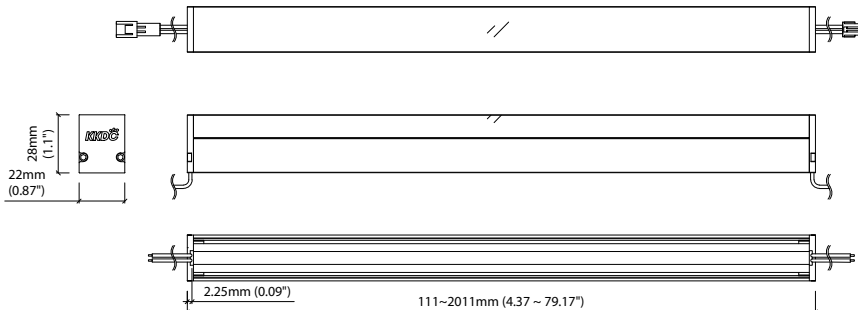
Power consumption	Supply voltage	Supply current
12.5W/m (3.81W/ft)	24V DC	0.52A/m (0.16A/ft)

Colour Rendering Index (CRI)

	R1	R2	R3	R4	R5	R6	R7	R8	R9	R10	R11	R12	R13	R14
k-line	94	97	98	93	93	96	92	83	60	93	94	82	95	99

Diffused Cover

		CRI	R9	Rf	Rg
s/e-line	750lm/m (229lm/ft) 60lm/W	92	50	-	-
k-line	640lm/m (195lm/ft) 51.5lm/W	92	60	-	-



Data derived from independent UKAS/IESNA LM-79-08 accredited testing of production samples.

LiNi Glow XL 504

Code Table



FIXTURE

Model	Finish	Cover	Grade ¹	LED	Colour (CCT)	Length Availability ²	IP	Cable Length	Power Feed ³	Input	
LiNi Glow XL	GX Silver Anodised	SA Diffused U cover	0	s	504	1900K 19	m 111-2011mm 100mm increments	IP40 40	300mm/11.81" 0300 1000mm/39.37" 1000	Single no sheath tail S00X Double no sheath tail D00X Single no sheath IP20 connector S20X Double no sheath IP20 connector D20X	DC 24V g
						2100K 21	i 4.37-79.17in 3.94in increments				
						2300K 23	(Specify length code OR total run length)				
						2500K 25					
						2700K 27					
						3000K 30					
						3500K 35					
						4000K 40					
						5000K 50					
						RED RED s-only					
						GREEN GRN					
						BLUE BLU					
						ORANGE ORN					
	AMBER AMB										

¹ Refer to **LED Grading Key** on **Specification sheet** page

² Refer to **Length Availability List** or enter total run length instead of length code

³ Refer to **Power Feed Options** on **Options** pages

Code Example:

GX	-	SA	-	0	-	s	-	504	-	35	-	m	511	-	40	-	0300	-	D00X	-	g
LiNi Glow XL	Silver Anodised	Diffused U cover	s	504	3500K	511mm	IP40	300mm/11.81"	Double no sheath tail	DC 24V											

ACCESSORIES

Mounting Accessories

KKCP-11	Concealed Clip
KKCR-01-1000	1000mm/39.37" Cable Raceway
KKCR-01-2000	2000mm/78.74" Cable Raceway
KKCR-01-3000	3000mm/118.11" Cable Raceway
KKJT-02	Joining Bar

Connection Accessories

KKCN-01	2 PIN male & female 50mm/1.97" pair
KKCN-03	2 PIN male & female 300mm/11.81" pair
KKCN-06	2 PIN 300mm/11.81" extension lead

* Refer to **Power feed** on **Accessories** pages

PSU/Driver

0-10V/1-10V/DALI/DMX

* Refer to **Driver/PSU Options** page for details or provide requirement and KKDC to offer the suitable option

* Refer to **Mounting accessories** on **Accessories** pages

LED ENGINE VARIANTS (LED STRIP TYPE)

Colour	Output	LED	Lumen/m	Lumen/ft	W/m	W/ft	Spec Doc	Length	Increment
Single CCT	Low	352	300	91	5.5	1.67	LiNi Glow XL 352	94.3-2011mm (3.71-79.17in)	83.3mm (3.28in)
	Mid	504	750	229	12.5	3.81	LiNi Glow XL 504	111-2011mm (4.37-79.17in)	100mm (3.94in)
	Mid	508	1040	317	17.5	5.33	LiNi Glow XL 508	82.4-2011mm (3.24-79.17in)	71.4mm (2.81in)
Warm Dim/Dynamic White	Max	040	2680	817	40	12.19	LiNi Glow XL A040	88-1511mm (3.46-59.49in)	38.46mm (1.51in)
	Low	207	530	161	11	3.35	LiNi Glow XL 207	94.3-2011mm (3.71-79.17in)	83.3mm (3.28in)
	Mid	208	920	311	15.6	4.75	LiNi Glow XL 208	177.7-2011mm (7.00-79.17in)	166.7mm (6.56in)
RGB		501	Red 90 Green 193 Blue 32 RGB 280	Red 27 Green 59 Blue 10 RGB 85	15.6	4.75	LiNi Glow XL RGB	94.3-2011mm (3.71-79.17in)	83.3mm (3.28in)

* Performance data: A/s/e-line, diffused Cover, 3000K

LiNi Glow XL 504

Length Availability List

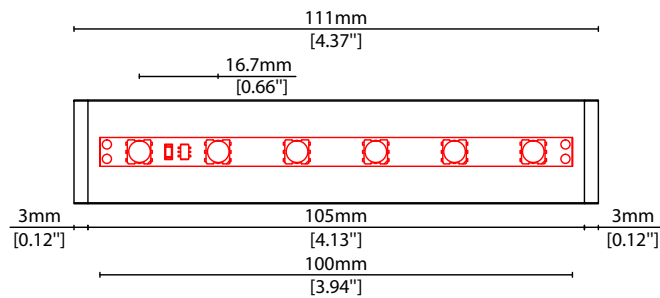


Length Code		Fixture Length ¹		LED Strip ²		End Cap Dimension ³		Wattage (W)	Output (lm)	
Metric	Imperial(US)	Metric	Imperial(US)	Metric	Imperial(US)	Metric	Imperial(US)		3000K (Test Data)	Range Data
m0111	i0004	111mm	4.37in	100mm	3.94in	6mm	0.24in	1.25	62	52-78
m0211	i0008	211mm	8.31in	200mm	7.87in	6mm	0.24in	2.50	124	103-156
m0311	i0012	311mm	12.24in	300mm	11.81in	6mm	0.24in	3.75	186	155-234
m0411	i0016	411mm	16.18in	400mm	15.75in	6mm	0.24in	5.00	248	206-312
m0511	i0020	511mm	20.12in	500mm	19.69in	6mm	0.24in	6.25	309	258-390
m0611	i0024	611mm	24.06in	600mm	23.62in	6mm	0.24in	7.50	371	309-468
m0711	i0028	711mm	27.99in	700mm	27.56in	6mm	0.24in	8.75	433	361-546
m0811	i0032	811mm	31.93in	800mm	31.50in	6mm	0.24in	10.00	495	412-624
m0911	i0036	911mm	35.87in	900mm	35.43in	6mm	0.24in	11.25	557	464-702
m1011	i0040	1011mm	39.80in	1000mm	39.37in	6mm	0.24in	12.50	619	515-780
m1111	i0044	1111mm	43.74in	1100mm	43.31in	6mm	0.24in	13.75	681	567-858
m1211	i0048	1211mm	47.68in	1200mm	47.24in	6mm	0.24in	15.00	743	618-936
m1311	i0052	1311mm	51.61in	1300mm	51.18in	6mm	0.24in	16.25	804	670-1014
m1411	i0056	1411mm	55.55in	1400mm	55.12in	6mm	0.24in	17.50	866	721-1092
m1511	i0059	1511mm	59.49in	1500mm	59.06in	6mm	0.24in	18.75	928	773-1170
m1611	i0063	1611mm	63.43in	1600mm	62.99in	6mm	0.24in	20.00	990	824-1248
m1711	i0067	1711mm	67.36in	1700mm	66.93in	6mm	0.24in	21.25	1052	876-1326
m1811	i0071	1811mm	71.30in	1800mm	70.87in	6mm	0.24in	22.50	1114	927-1404
m1911	i0075	1911mm	75.24in	1900mm	74.80in	6mm	0.24in	23.75	1176	979-1482
m2011	i0079	2011mm	79.17in	2000mm	78.74in	6mm	0.24in	25.00	1238	1030-1560

¹ Actual total overall length of light fixture (LED strip + end caps + void/wire hole)

² Actual length of PCB strip

³ Actual length of 2x end caps



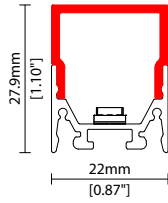
Linear

LiNi Glow XL 504 Options

KKDC

COVER/LENS OPTIONS

* Options are an integral part of the fixture ordering codes. Please refer to **Code Table** pages.

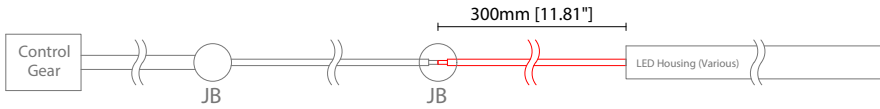


C Diffused cover

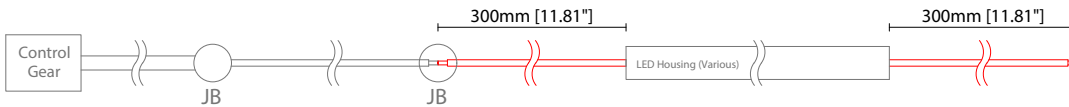
W22/H27.9mm (W0.87/H1.10")

POWER FEED OPTIONS

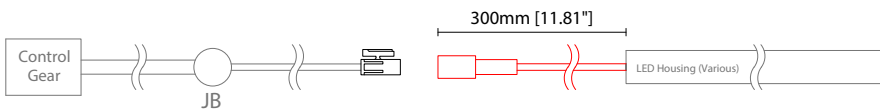
0300 S00X 300mm (11.81") Single no sheath tail



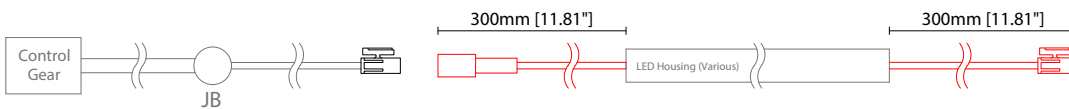
0300 D00X 300mm (11.81") Double no sheath tail



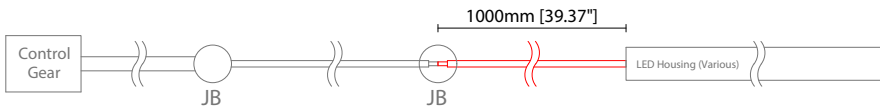
0300 S20X 300mm (11.81") Single no sheath IP20 connector



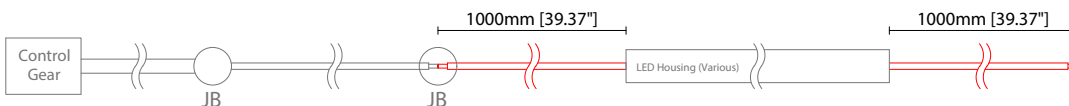
0300 D20X 300mm (11.81") Double no sheath IP20 connector



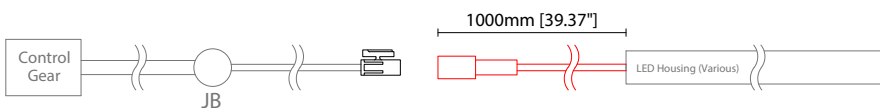
1000 S00X 1000mm (39.37") Single no sheath tail



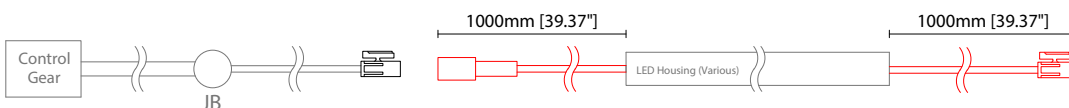
1000 D00X 1000mm (39.37") Double no sheath tail



1000 S20X 1000mm (39.37") Single no sheath IP20 connector



1000 D20X 1000mm (39.37") Double no sheath IP20 connector



Key

Control Gear Power supply, sub-controllers & control systems
 JB Junction box / cable connection

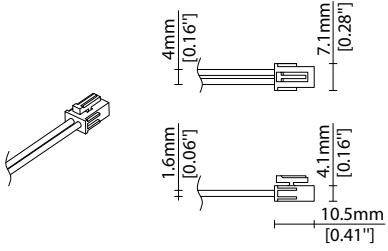
Linear

LiNi Glow XL 504 Options

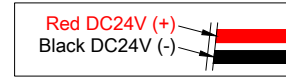
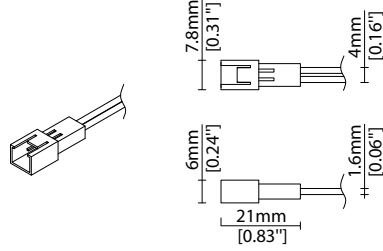


POWER FEED OPTIONS (CONTINUED)

2 Pin Female Connector



2 Pin Male Connector

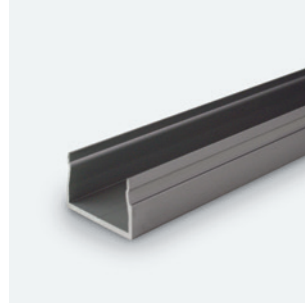
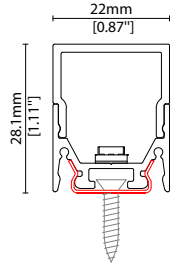


MOUNTING ACCESSORIES

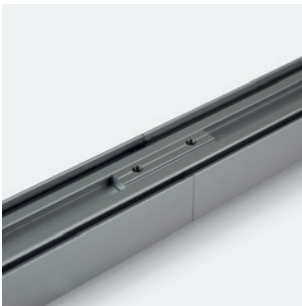
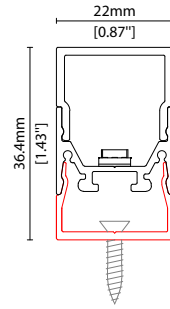
Note: Accessories are to be ordered separately with corresponding code shown below.



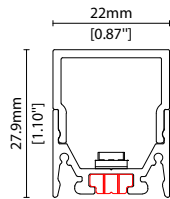
KKCP-11
 Concealed clip
 (allow 3 per metre/40in)
 S/Steel finish
 L20/W22/H28.1mm
 (L0.79/W0.87/H1.11")



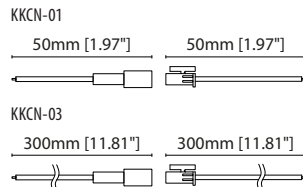
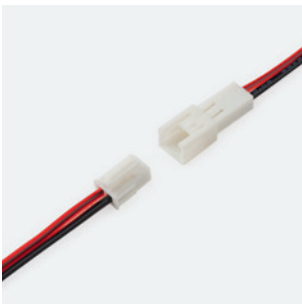
KKCR-01-1000 1000mm (39.37in)
KKCR-01-2000 2000mm (78.74in)
KKCR-01-3000 3000mm (118.11in)
 Cable raceway*
 Anodised aluminium finish
 W22/H36.4mm (W0.87/H1.43")
 * Cut & drilled to fit on site



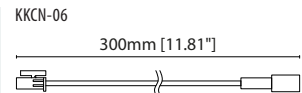
KKJT-02
 Joining bar* (allow 1 per join)
 Anodised aluminium finish
 L25mm (L0.98")
 * Mounting option required with
 Joining bar



POWER FEED



KKCN-01 50mm (1.97in) pair
KKCN-03 300mm (11.81in) pair
 2 PIN male + female connector set



KKCN-06
 2 PIN 300mm (11.81in) extension
 lead

Linear

LiNi Glow XL 504 Accessories

KKDC

KKDC CONTROL



IP20
Plastic housing
L170/W59/H29mm
(L6.69/W2.32/H1.14in)

KKDM-06 1-10V

visDIM dimmable sub-controller
(4 x 8A max @ 12-36V)



IP20
Plastic housing
L170/W53.4/H28mm
(L6.69/W2.10/H1.10in)

KKSC-05 DMX

visDIM dimmable sub-controller
(4 x 5A max @ 12-36V)



IP20
Plastic housing
L170/W59/H29mm
(L6.69/W2.32/H1.14in)

KKDL-02 DALI

visDIM dimmable sub-controller
(4 x 8A max @ 12-36V)



IP20
Plastic housing
L166/W53.4/H23mm
(L6.54/W2.10/H0.91in)

KKDL-03 DALI

visDIM dimmable sub-controller
(4 x 5A max @ 12-36V)

AVAILABLE PSU OPTIONS

Control Mode	PSU (Order Code)	Input Voltage AC	Output Voltage DC	Rated Output Current	Rated Power	Dim %	IP Rating
Switched	CEN-60-24	90-295V	24V	2.5A	60W	-	IP67
	HLG-60H-24	90-305V	24V	2.5A	60W	-	IP67
	HLG-100H-24	90-305V	24V	4.0A	100W	-	IP67
	HLG-150H-24	90-305V	24V	6.3A	150W	-	IP67
	HLG-240H-24	90-305V	24V	10A	240W	-	IP67
0-10V (1-10V)	PWM-40-24	90-305V	24V	1.67A	40W	100-0.15 (100-10)	IP67
	PWM-60-24	90-305V	24V	2.5A	60W	100-0.15 (100-10)	IP67
	PWM-90-24	90-305V	24V	3.67A	90W	100-0.15 (100-10)	IP67
	PWM-120-24	90-305V	24V	5.0A	120W	100-0.15 (100-10)	IP67
DALI	LIN100A1	120-277V	24V	1A per channel	100W	100-0.1	IP66/IP40
DMX RGB	LIN100A1	120-277V	24V	1.33A per channel	100W	100-0.1	IP66/IP40
DMX RGBW	LIN100A1	120-277A	24V	1A per channel	100W	100-0.1	IP66/IP40

Flicker Free Options - Combination of PSU+ sub-controller

Control Mode	PSU (Order Code)	Sub-controller (Order Code)	Input Voltage AC	Output Voltage DC	Rated Output Current	Rated Power	Dim %	IP Rating PSU/ Sub-controller
0-10V or 1-10V	CEN-60-24	KKDM-06	90-295V	24V	2.5A	60W	100-0.9	IP67/IP20
	HLG-60H-24	KKDM-06	90-295V	24V	2.5A	60W	100-0.9	IP67/IP20
	HLG-100H-24	KKDM-06	90-295V	24V	4.0A	100W	100-0.9	IP67/IP20
	HLG-150H-24	KKDM-06	90-295V	24V	6.3A	150W	100-0.9	IP67/IP20
	HLG-240H-24	KKDM-06	90-295V	24V	10.0A	240W	100-0.9	IP67/IP20
DALI	CEN-60-24	KKDL-02/03	90-295V	24V	2.5A	60W	100-0.1	IP67/IP20
	HLG-60H-24	KKDL-02/03	90-305V	24V	2.5A	60W	100-0.1	IP67/IP20
	HLG-100H-24	KKDL-02/03	90-305V	24V	4.0A	100W	100-0.1	IP67/IP20
	HLG-150H-24	KKDL-02/03	90-305V	24V	6.3A	150W	100-0.1	IP67/IP20
	HLG-240H-24	KKDL-02/03	90-305V	24V	10.0A	240W	100-0.1	IP67/IP20
DMX RGB	CEN-60-24	KKSC-05	90-295V	24V	2.5A	60W	100-0.9	IP67/IP20
	HLG-60H-24	KKSC-05	90-305V	24V	2.5A	60W	100-0.9	IP67/IP20
	HLG-100H-24	KKSC-05	90-305V	24V	4A	100W	100-0.9	IP67/IP20
	HLG-150H-24	KKSC-05	90-305V	24V	6.3A	150W	100-0.9	IP67/IP20
	HLG-240H-24	KKSC-05	90-305V	24V	10.0A	240W	100-0.9	IP67/IP20

¹ The items shown above cover the most frequently used specification but does not exhaust the possible options

² PSU and/or driver can be chosen from the table, or KKDC may recommend the best option upon receipt of the controls requirement and installation environment

³ Electrical shop drawing will include detailed information of PSU and relevant control drivers

⁴ Cut sheets are available on the controls section of www.kkdc.lighting or upon request