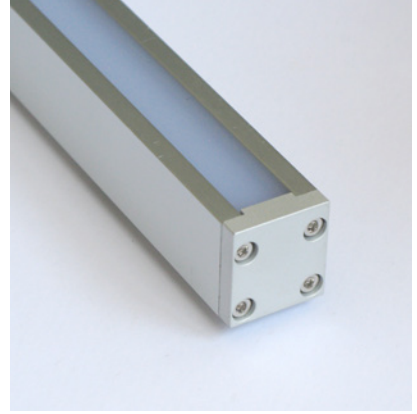


Linear

MoMo 504 Fixture Guide

KKDÖ

Indoor/Outdoor | Surface | Mid output up to 990lm/m (302lm/ft)

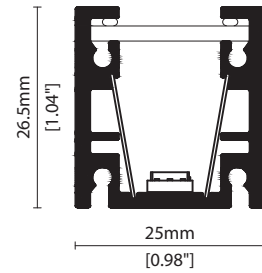


Key applications

- ✓ Bathrooms
- ✓ Building façades
- ✓ Interior/Exterior
- ✓ Mirror back lighting
- ✓ Public spaces
- ✓ Retail display
- ✓ Under bench
- ✓ Wall grazing
- ✓ Window Reveal

Key features

- ✓ Custom lengths
- ✓ Diffusion: Homogenous
- ✓ Direct view
- ✓ Extensive CCT range
- ✓ Form factor: Medium
- ✓ IP54
- ✓ IP67
- ✓ Output mid



MOUNTING METHODS



KKCP-03 Clip



KKCP-09 Lock clip



KKBK-07 Fixing plate



KKBK-21 Adjustable bracket

Linear

MoMo 504

Specification sheet



Dimension	H26.5/W25/L120-2020mm* (H1.04/W0.98/L4.72-79.53in*) *Nano Louvre = 1020mm/40.16in Max
PCB increment	100mm increment/2000mm* (3.94in increment/78.74in*) *Nano Louvre = 1000mm/39.37in Max
LED pitch	16.7mm - 60LED/m (0.66in - 18LED/ft)
Chip	s/e-line Toyoda Gosei k-line Toyoda Gosei or Equivalent
Beam angle	100° (Clear)/14° (Clear+KKLN-01 Lens)/23° (Clear+KKLN-03 Lens)/95° (Diffused)/35° (Diffused+Nano Louvre)
Colours	s/e-line 1900K/2100K/2300K/2500K/2700K/3000K/3500K/4000K/5000K s-line Single colours: Red/Green/Blue/Orange/Amber k-line 1900K/2100K/2300K/2500K/2700K/3000K/3500K/4000K/5000K
Bin/Step	s-line 2-step MacAdam ellipse e/k-line 3-step MacAdam ellipse
CRI	≥ 90
Lifetime	50,000 hours @ 25°C (50,000 hours @ 77°F)
Operating temp	T _a = -25 to 60°C (T _c max = 70°C) T _a = -13 to 140°F (T _c max = 158°F)
IP rating	IP54/IP67
Finish	Silver anodised
Cover/lens	Clear/Clear + 14° lens option (KKLN-01)/Clear + 23° lens option (KKLN-03)/Diffused/Diffused + Nano Louvre
Mounting	Surface mounting via clips or brackets
Power feed	Sheathed hardwire tails or male/female connectors
Control	0-10V/1-10V/DMX/DALI



LED Grading Key

Exclusive Grade

- s-line*** 2-step CCT range
- e-line*** 3-step CCT range

*KKDC tuned CCT range

Base Grade

- k-line** 3-step commercial range Energy Star CCTs

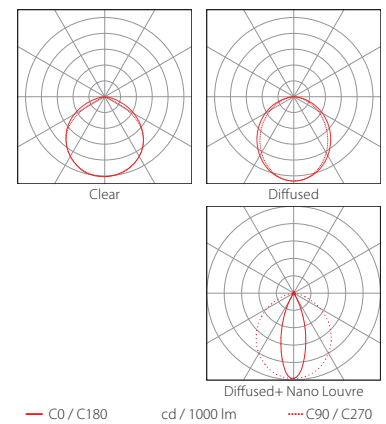
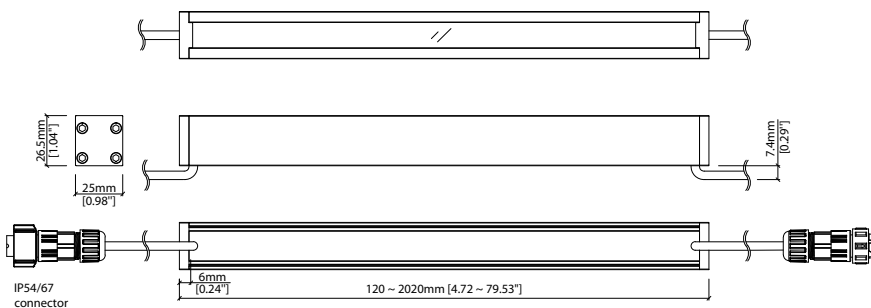
PERFORMANCE DATA @ 3000K

Power Consumption	Supply voltage	Supply current
12.5W/m (3.81W/ft)	24V DC	0.52A/m (0.16A/ft)

Colour Rendering Index (CRI)

	R1	R2	R3	R4	R5	R6	R7	R8	R9	R10	R11	R12	R13	R14
k-line	94	97	98	93	93	96	92	83	60	93	94	82	95	99

	Clear	Clear + 14° (KKLN-01)	Clear + 23° (KKLN-03)	Diffused	Diffused + Nano Louvre	CRI	R9	Rf	Rg
s/e-line	990lm/m (302lm/ft) 79.1lm/W	480lm/m (146lm/ft) 38.7lm/W	494lm/m (151lm/ft) 39.6lm/W	540lm/m (165lm/ft) 43.5lm/W	136lm/m (41lm/ft) 10.9lm/W	90	50	-	-
k-line	880lm/m (268lm/ft) 70.4lm/W	390lm/m (119lm/ft) 31.2lm/W	396lm/m (121lm/ft) 31.7lm/W	570lm/m (174lm/ft) 45.4lm/W	144lm/m (44lm/ft) 11.5lm/W	92	60	-	-



Data derived from independent UKAS/IESNA LM-79-08 accredited testing of production samples.

FIXTURE

Model	Finish	Cover/Lens ¹	Grade ²	LED	Colour (CCT)	Length Availability ³	IP	Cable Length	Power Feed ⁴	Input		
MoMo	MM Silver Anodised	SA Clear	B	s	504	1900K	m 120-2020mm 100mm increments	IP54 54	300mm/ 11.81" 0300	Single ø4.3mm sheath tail 500A	DC 24V g	
			P	e		2100K	21	IP67 ⁷ 67				
				k		2300K	23					
			A			2500K	25					i 4.72-79.53in 3.94in increments
						2700K	27					(Specify length code OR total run length)
			C			3000K	30					
			CN			3500K	35					
						4000K	40					
						5000K	50					
						RED	RED s-only					
						GREEN	GRN					
						BLUE	BLU					
						ORANGE	ORN					
			AMBER	AMB								

¹ Refer to **Cover/Lens Options** on **Options** pages

² Refer to **LED Grading Key** on **Specification sheet** page

³ Refer to **Length Availability List** or enter total run length instead of length code

⁴ Refer to **Power Feed Options** on **Options** pages

⁵ Max length available with Nano Louvre is 1020mm

⁶ Due to the clear, flush potted polyurethane top layer on IP67 MoMo a colour shift of +/- 20K should be expected

⁷ IP67 connectors are used for both IP67 and IP54 product housings

Code Example:

MM	-	SA	-	C	-	s	-	504	-	35	-	m	520	-	67	-	0300	-	D67A	-	g
MoMo		Silver Anodised		Diffused		s		504		3500K		520mm		IP67		300mm/11.81"		Double ø4.3mm sheath IP67 connector		DC 24V	

ACCESSORIES

Mounting Accessories

KKCP-03	Clip (1no.)
KKCP-53	Clip (500no.)
KKCP-09	Lock Clip
KKBK-07	Fixing plate
KKBK-21	Adjustable bracket

* Refer to **Mounting accessories** on **Accessories** pages

Connection Accessories

CN67-2P-0300	IP67 2 PIN male & female 300mm/11.81" pair
CN67-2P-1000	IP67 2 PIN male & female 1000mm/39.37" pair
CN67-2P-3000	IP67 2 PIN male & female 3000mm/118.11" pair

* Refer to **Power feed** on **Accessories** pages

Exterior Junction Boxes

KKJB-07	IP67 Slim J-Box
KKJB-07R	Potting Resin for IP67 Slim J-Box

* Refer to **Exterior Junction Boxes** on **Accessories** pages

PSU/Driver

0-10V/1-10V/DALI/DMX

* Refer to **Driver/PSU Options** page for details or provide requirement and KKDC to offer the suitable option

LED ENGINE VARIANTS (LED STRIP TYPE)

Colour	Output	LED	Lumen/m	Lumen/ft	W/m	W/ft	Spec Doc	Length	Increment
Single CCT	Low	352	420	127	5.5	1.67	MoMo 352	103.3-2020mm (4.07-79.53in)	83.3mm (3.28in)
	Mid	504	990	302	12.5	3.81	MoMo 504	120-2020mm (4.72-79.53in)	100mm (3.94in)
	High	508	1370	418	17.5	5.33	MoMo 508	91.4-2020mm (3.60-79.53in)	71.4mm (2.81in)
	Max	512	2370	720	30.2	9.2	MoMo 512	91.4-2020mm (3.60-79.53in)	71.4mm (2.81in)
	Max	040	3960	1207	40	12.19	MoMo A040	97-1520mm (3.82-59.84in)	38.46mm (1.51in)
Warm Dim/Dynamic White	Mid	207	720	219	11	3.35	MoMo 207	103.3-2020mm (4.07-79.53in)	83.3mm (3.28in)
	Mid	208	1210	409	15.6	4.75	MoMo 208	186.7-2020mm (7.35-79.53in)	166.7mm (6.56in)
RGB		501	Red 124 Green 252 Blue 41 RGB 398	Red 38 Green 77 Blue 12 RGB 121	15.6	4.75	MoMo RGB	103.3-2020mm (4.07-79.53in)	83.3mm (3.28in)

* Performance data: A/s/e-line, clear cover, 3000K

MoMo 504

Length Availability List

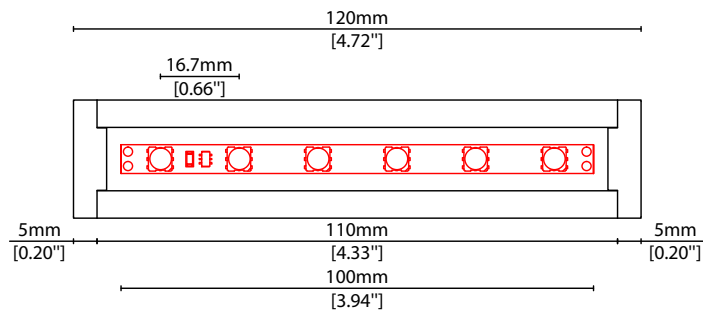


Length Code		Fixture Length ¹		LED Strip ²		End Cap Dimension ³		Wattage (W)	Output (lm)	
Metric	Imperial(US)	Metric	Imperial(US)	Metric	Imperial(US)	Metric	Imperial(US)		3000K (Test Data)	Range Data
m0120	i0005	120mm	4.72in	100mm	3.94in	10mm	0.39in	1.25	99	11-103
m0220	i0009	220mm	8.66in	200mm	7.87in	10mm	0.39in	2.50	198	22-206
m0320	i0013	320mm	12.60in	300mm	11.81in	10mm	0.39in	3.75	297	33-308
m0420	i0017	420mm	16.54in	400mm	15.75in	10mm	0.39in	5.00	396	44-411
m0520	i0020	520mm	20.47in	500mm	19.69in	10mm	0.39in	6.25	494	55-514
m0620	i0024	620mm	24.41in	600mm	23.62in	10mm	0.39in	7.50	593	65-617
m0720	i0028	720mm	28.35in	700mm	27.56in	10mm	0.39in	8.75	692	76-720
m0820	i0032	820mm	32.28in	800mm	31.50in	10mm	0.39in	10.00	791	87-823
m0920	i0036	920mm	36.22in	900mm	35.43in	10mm	0.39in	11.25	890	98-925
m1020	i0040	1020mm	40.16in	1000mm	39.37in	10mm	0.39in	12.50	989	109-1028
m1120	i0044	1120mm	44.09in	1100mm	43.31in	10mm	0.39in	13.75	1088	120-1131
m1220	i0048	1220mm	48.03in	1200mm	47.24in	10mm	0.39in	15.00	1187	131-1234
m1320	i0052	1320mm	51.97in	1300mm	51.18in	10mm	0.39in	16.25	1285	142-1337
m1420	i0056	1420mm	55.91in	1400mm	55.12in	10mm	0.39in	17.50	1384	153-1440
m1520	i0060	1520mm	59.84in	1500mm	59.06in	10mm	0.39in	18.75	1483	164-1542
m1620	i0064	1620mm	63.78in	1600mm	62.99in	10mm	0.39in	20.00	1582	174-1645
m1720	i0068	1720mm	67.72in	1700mm	66.93in	10mm	0.39in	21.25	1681	185-1748
m1820	i0072	1820mm	71.65in	1800mm	70.87in	10mm	0.39in	22.50	1780	196-1851
m1920	i0076	1920mm	75.59in	1900mm	74.80in	10mm	0.39in	23.75	1879	207-1954
m2020	i0080	2020mm	79.53in	2000mm	78.74in	10mm	0.39in	25.00	1978	218-2057

¹ Actual total overall length of light fixture (LED strip + end caps + void/wire hole)

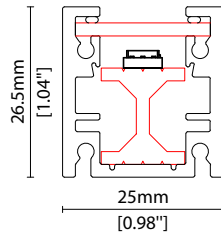
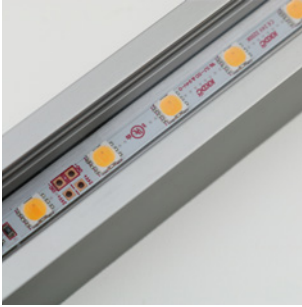
² Actual length of PCB strip

³ Actual length of 2x end caps

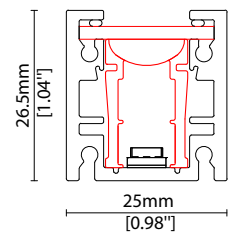


COVER/LENS OPTIONS

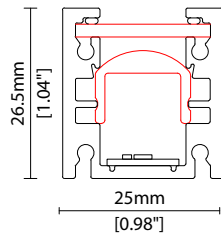
* Options are an integral part of the fixture ordering codes. Please refer to **Code Table** pages.



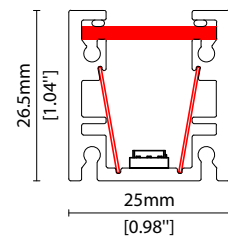
B Clear Cover



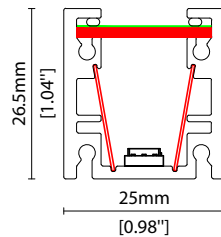
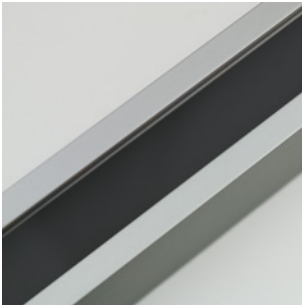
P Clear Cover +
14° (KKLN-01) lens



A Clear Cover +
23° (KKLN-03) lens



C Diffused Cover

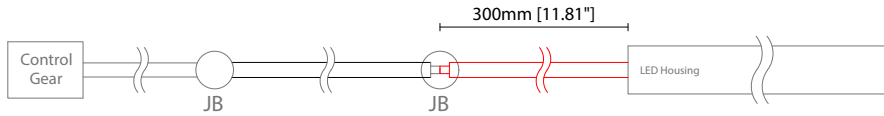


CN Diffused Cover + Nano Louvre

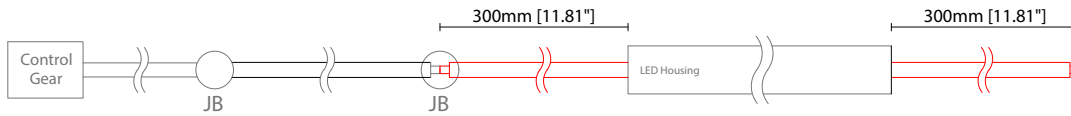
POWER FEED OPTIONS

* Options are an integral part of the fixture ordering codes. Please refer to **Code Table** pages.

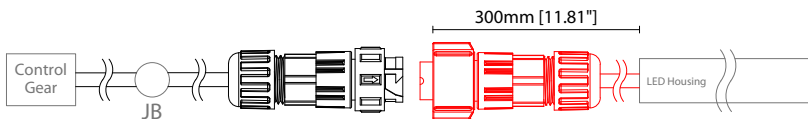
0300 S00A 300mm (11.81") Single Ø4.3mm sheath tail



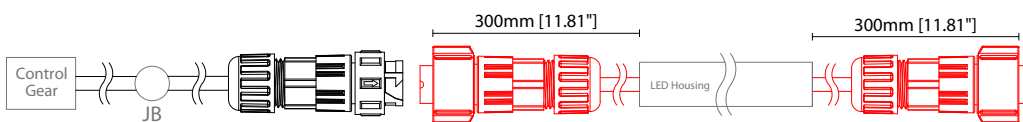
0300 D00A 300mm (11.81") Double Ø4.3mm sheath tail



0300 S67A 300mm (11.81") Single ø4.3mm sheath IP67 connector

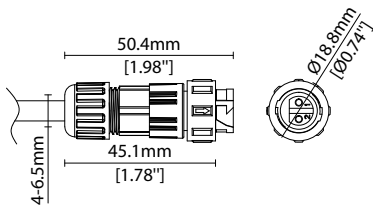


0300 D67A 300mm (11.81") Double ø4.3mm sheath IP67 connector

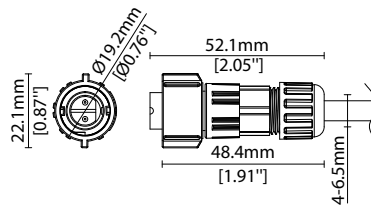


IP67 2 Pin Connector

Female connector
2 PIN (IP67)



Male connector
2 PIN (IP67)

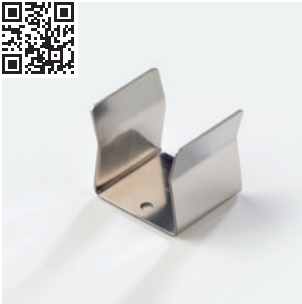


Key

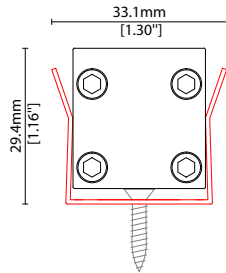
- Control Gear Power supply, sub-controllers & control systems
- JB Junction box / cable connection

MOUNTING ACCESSORIES

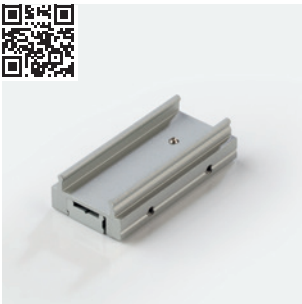
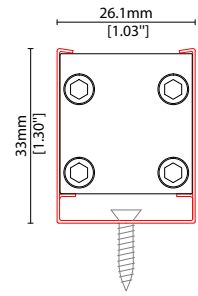
Note: Accessories are to be ordered separately with corresponding code shown below.



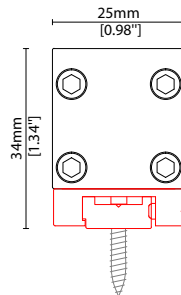
KKCP-03 (1no.)
KKCP-53 (500no.)
 Clip (allow 3 per metre/40in)
 S/Steel finish
 L25/W33.1/H29.4mm
 (L0.98/W1.3/H1.16")



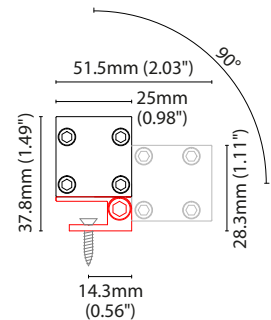
KKCP-09
 Lock clip (allow 2 per metre/40in)
 S/Steel finish
 L25/W26.1/H33mm
 (L0.98/W1.03/H1.3")



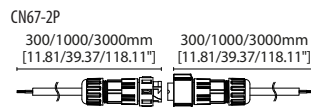
KKBK-07
 Fixing plate (allow 2 per metre/40in)
 Anodised aluminium finish
 L50/W25/H34mm
 (L1.97/W0.98/H1.34")
 Pre-assembled in factory



KKBK-21
 Adjustable bracket
 (allow 2 per metre/40in)
 Anodised aluminium finish
 L34/W25/H37.8mm
 (L1.34/W0.98/H1.49")
 Pre-assembled in factory



POWER FEED



CN67-2P-0300 300mm (11.81in) pair
CN67-2P-1000 1000mm (39.37in) pair
CN67-2P-3000 3000mm (118.11in) pair
 IP67
 2 PIN male + female connector set

EXTERIOR JUNCTION BOXES



KKJB-07

IP67 Slim J-Box
(including type A,B,C, D bushings)



KKJB-07R

Potting resin for IP67 Slim J-Box

KKDC CONTROL



KKDM-06 1-10V

visDIM dimmable sub-controller
(4 x 8A max @ 12-36V)

IP20
Plastic housing
L170/W59/H29mm
(L6.69/W2.32/H1.14in)



KKSC-05 DMX

visDIM dimmable sub-controller
(4 x 5A max @ 12-36V)

IP20
Plastic housing
L170/W53.4/H28mm
(L6.69/W2.10/H1.10in)



KKDL-02 DALI

visDIM dimmable sub-controller
(4 x 8A max @ 12-36V)

IP20
Plastic housing
L170/W59/H29mm
(L6.69/W2.32/H1.14in)



KKDL-03 DALI

visDIM dimmable sub-controller
(4 x 5A max @ 12-36V)

IP20
Plastic housing
L166/W53.4/H23mm
(L6.54/W2.10/H0.91in)

AVAILABLE PSU OPTIONS

Control Mode	PSU (Order Code)	Input Voltage AC	Output Voltage DC	Rated Output Current	Rated Power	Dim %	IP Rating
Switched	CEN-60-24	90-295V	24V	2.5A	60W	-	IP67
	HLG-60H-24	90-305V	24V	2.5A	60W	-	IP67
	HLG-100H-24	90-305V	24V	4.0A	100W	-	IP67
	HLG-150H-24	90-305V	24V	6.3A	150W	-	IP67
	HLG-240H-24	90-305V	24V	10A	240W	-	IP67
0-10V (1-10V)	PWM-40-24	90-305V	24V	1.67A	40W	100-0.15 (100-10)	IP67
	PWM-60-24	90-305V	24V	2.5A	60W	100-0.15 (100-10)	IP67
	PWM-90-24	90-305V	24V	3.67A	90W	100-0.15 (100-10)	IP67
	PWM-120-24	90-305V	24V	5.0A	120W	100-0.15 (100-10)	IP67
DALI	LIN100A1	120-277V	24V	1A per channel	100W	100-0.1	IP66/IP40
DMX RGB	LIN100A1	120-277V	24V	1.33A per channel	100W	100-0.1	IP66/IP40
DMX RGBW	LIN100A1	120-277A	24V	1A per channel	100W	100-0.1	IP66/IP40

Flicker Free Options - Combination of PSU+ sub-controller

Control Mode	PSU (Order Code)	Sub-controller (Order Code)	Input Voltage AC	Output Voltage DC	Rated Output Current	Rated Power	Dim %	IP Rating PSU/ Sub-controller
0-10V or 1-10V	CEN-60-24	KKDM-06	90-295V	24V	2.5A	60W	100-0.9	IP67/IP20
	HLG-60H-24	KKDM-06	90-295V	24V	2.5A	60W	100-0.9	IP67/IP20
	HLG-100H-24	KKDM-06	90-295V	24V	4.0A	100W	100-0.9	IP67/IP20
	HLG-150H-24	KKDM-06	90-295V	24V	6.3A	150W	100-0.9	IP67/IP20
	HLG-240H-24	KKDM-06	90-295V	24V	10.0A	240W	100-0.9	IP67/IP20
DALI	CEN-60-24	KKDL-02/03	90-295V	24V	2.5A	60W	100-0.1	IP67/IP20
	HLG-60H-24	KKDL-02/03	90-305V	24V	2.5A	60W	100-0.1	IP67/IP20
	HLG-100H-24	KKDL-02/03	90-305V	24V	4.0A	100W	100-0.1	IP67/IP20
	HLG-150H-24	KKDL-02/03	90-305V	24V	6.3A	150W	100-0.1	IP67/IP20
	HLG-240H-24	KKDL-02/03	90-305V	24V	10.0A	240W	100-0.1	IP67/IP20
DMX RGB	CEN-60-24	KKSC-05	90-295V	24V	2.5A	60W	100-0.9	IP67/IP20
	HLG-60H-24	KKSC-05	90-305V	24V	2.5A	60W	100-0.9	IP67/IP20
	HLG-100H-24	KKSC-05	90-305V	24V	4A	100W	100-0.9	IP67/IP20
	HLG-150H-24	KKSC-05	90-305V	24V	6.3A	150W	100-0.9	IP67/IP20
	HLG-240H-24	KKSC-05	90-305V	24V	10.0A	240W	100-0.9	IP67/IP20

¹ The items shown above cover the most frequently used specification but does not exhaust the possible options

² PSU and/or driver can be chosen from the table, or KKDC may recommend the best option upon receipt of the controls requirement and installation environment

³ Electrical shop drawing will include detailed information of PSU and relevant control drivers

⁴ Cut sheets are available on the controls section of www.kkdc.lighting or upon request