

High Power

SEN Louvre CV 035 Fixture Guide



Indoor/Outdoor | Surface | Max output up to 2830lm/m (865lm/ft)

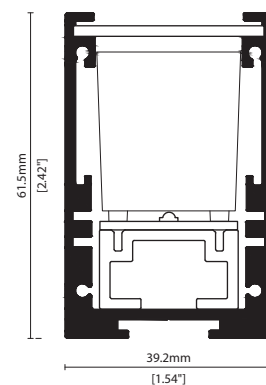


Key applications

- ✓ Backlighting/Signage
- ✓ Building façades
- ✓ Ceiling
- ✓ Downlighting
- ✓ Flood lighting
- ✓ Interior/Exterior
- ✓ Office lighting
- ✓ Public spaces
- ✓ Wall grazing

Key features

- ✓ Custom lengths
- ✓ Diffusion: Spotting
- ✓ Direct view
- ✓ Form factor: Large
- ✓ IP54
- ✓ IP67
- ✓ Lensed
- ✓ Output max



MOUNTING METHODS



KKBK-02 Fixed bracket



KKBK-09 Mounting plate



KKBK-16 Small adjustable bracket



KKBK-17 Large adjustable bracket



KKBK-23 Low adjustable bracket



KKSU-05 Quick release suspension wire kit



SEN Louvre CV 035

Specification sheet



Dimension	H61.5/W39.2/L260-2010mm (H2.42/W1.54/L10.24-79.13in) 1260mm (49.60in) max for UL
PCB increment	250mm (9.84in)
LED pitch	35mm - 28LED/m (1.38in - 9LED/ft)
Chip	h-line CREE/Lumileds
Beam angle	10°/20°/30°
Colours	h-line White: 2700K/3000K/3500K/4000K/5000K (90CRI for 2700K/3000K)
Bin/Step	h-line 3-step MacAdam Ellipse h-line 4-step MacAdam Ellipse (5000K)
CRI	≥ 90 (2700K/3000K) ≥ 80 (3500K/4000K/5000K)
Lifetime	50,000 hours @ 25°C (50,000 hours @ 77°F)
Operating temp	T _a = -25 to 50°C (T _c max = 90°C) T _a = -13 to 122°F (T _c max = 194°F)
IP rating	IP54/67
Finish	Silver anodised
Cover/lens	Clear
Mounting	Surface mounting via brackets
Power feed	Sheathed hardwire tails or male/female connectors
Control	1-10V/DMX/DALI



LED Grading Key

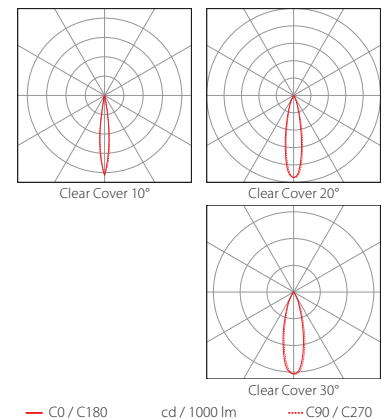
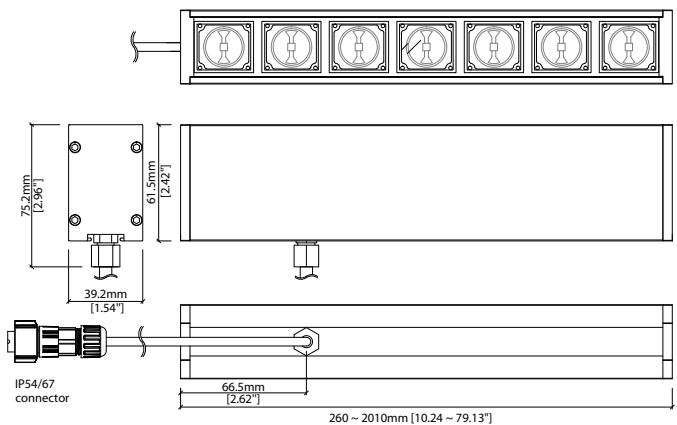
Exclusive Grade

h-line* *KKDC tuned
Constant Voltage Lensed High CCT range
Power LED
3-step CCT range
(4-step for 5000K)

PERFORMANCE DATA @ 3000K

Power consumption	Supply voltage	Supply current
67.2 W/m (20.48 W/ft)	24V DC	2.8 A/m (0.85 A/ft)

	Clear Cover 10°	Clear Cover 20°	Clear Cover 30°	CRI	R9
h-line	2830lm/m (865lm/ft) 42.1lm/W	2770lm/m (845lm/ft) 41.2lm/W	2760lm/m (840lm/ft) 41.0lm/W	93	77



Data derived from independent UKAS/IESNA LM-79-08 accredited testing of production samples.



SEN Louvre CV 035

Code Table



FIXTURE

Model	Finish	Cover	Grade ¹	LED	Colour (CCT)	Length Availability ²	IP	Cable Length	Power Feed ³	Cable Exit ⁴	Lens	Input											
SEN Louvre	SV Silver Anodised	SA Clear	B	h ^{CV} h	L35	2700K ⁵ 27	m 260-2010mm 250mm increments	1000mm 1000 /39.37"	Single ø6.3mm sheath tail	S00B	Rear Cable Exit	RC	No lens XX	DC 24V g									
					3000K ⁵ 30	i 10.24-79.13in 9.84in increments									IP54 54 IP67 ⁶ 67	1000mm 1000 /39.37"	Single ø6.3mm sheath tail	S00B	Rear Cable Exit	RC	No lens XX		
					3500K 35		i 10.24-79.13in 9.84in increments		IP54 54 IP67 ⁶ 67	1000mm 1000 /39.37"	Double ø6.3mm sheath tail	D00B	Side Cable Exit ⁸									SC	20° 20
					4000K 40																		
					5000K 50	(Specify length code OR total run length)	IP54 54 IP67 ⁶ 67		1000mm 1000 /39.37"	Single ø6.3mm sheath IP67 connector ⁷	S67B	Side Cable Exit ⁸	SC		20° 20								
		IP54 54 IP67 ⁶ 67	1000mm 1000 /39.37"	Double ø6.3mm sheath IP67 connector ⁷	D67B	Side Cable Exit ⁸		SC						30° 30									

¹ Refer to LED Grading Key on Specification sheet page ² Refer to Length Availability List or enter total run length instead of length code ³ Refer to Power Feed Options on Options pages

⁴ Refer to Cable Exit Options on Options pages ⁵ 2700K/3000K – 90CRI

⁶ Due to the clear, flush potted polyurethane top layer on IP67 SEN a colour shift of +/-20K should be expected

⁷ IP67 connectors are used for both IP67 and IP54 product housings

⁸ Low adjustable bracket needs side cable exit option

Code Example:

SV	-	SA	-	B	-	h	-	L35	-	30	-	m	1010	-	54	-	1000	-	D54B	-	RC	-	30	-	g
SEN Louvre		Silver Anodised		Clear		h ^{CV}		035		3000K		1010mm		IP54		1000mm/39.37"		Double ø6.3mm sheath IP54 connector		Rear Cable Exit		30°		DC 24V	

ACCESSORIES

Mounting Accessories

KKBK-02	Fixed bracket
KKBK-09	Mounting plate
KKBK-16	Small adjustable bracket
KKBK-17	Large adjustable bracket
KKBK-23	Low adjustable bracket
KKSW-05	Quick release

* Refer to Mounting accessories on Accessories pages

Exterior Junction Boxes

KKJB-07	IP67 Slim J-Box
KKJB-07R	Potting Resin for IP67 Slim J-Box

* Refer to Exterior Junction Boxes on Accessories pages

PSU/Driver

1-10V/DALI/DMX

* Refer to Driver/PSU Options page for details or provide requirement and KKDC to offer the suitable option

LED ENGINE VARIANTS (LED STRIP TYPE)

Colour	Output	LED	Lumen/m	Lumen/ft	W/m	W/ft	Spec Doc	Length	Increment
Single CCT	Max	035	2830	865	67.2	20.48	SEN Louvre CV 035	260-2010mm (10.24-79.13in)	250mm (9.84in)

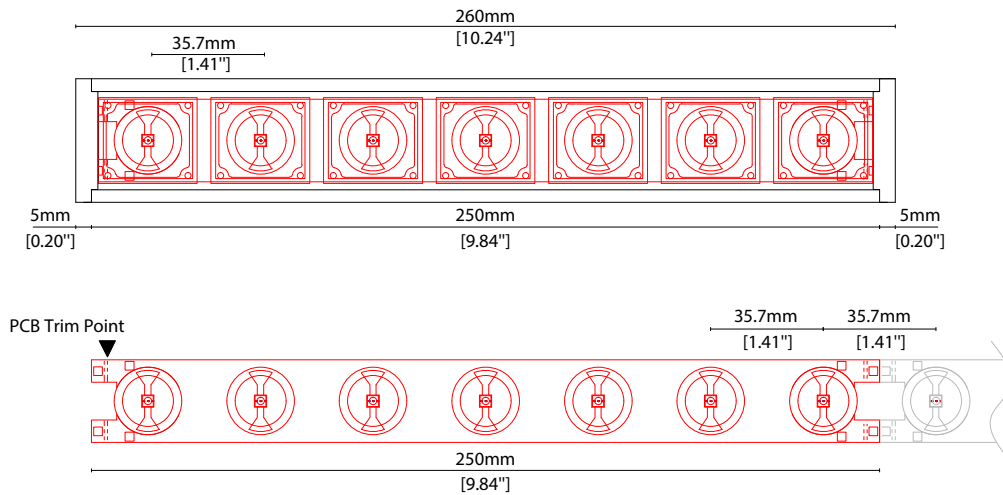
* Performance data: h-line, clear glass 10°, 3000K

Length Code		Fixture Length ¹		LED Strip		End Cap Dimension ²		Wattage (W)	Output (lm)	
Metric	Imperial(US)	Metric	Imperial(US)	Metric	Imperial(US)	Metric	Imperial(US)		3000K (Test Data)	Range Data
m0260	i0010	260mm	10.24in	250mm	9.84in	10mm	0.39in	16.80	707	551-736
m0510	i0020	510mm	20.08in	500mm	19.69in	10mm	0.39in	33.60	1415	1102-1471
m0760	i0030	760mm	29.92in	750mm	29.53in	10mm	0.39in	50.40	2122	1653-2207
m1010	i0040	1010mm	39.76in	1000mm	39.37in	10mm	0.39in	67.20	2829	2204-2942
m1260	i0050	1260mm	49.61in	1250mm	49.21in	10mm	0.39in	84.00	3536	2755-3678
m1510	i0059	1510mm	59.45in	1500mm	59.06in	10mm	0.39in	100.80	4244	3306-4413
m1760	i0069	1760mm	69.29in	1750mm	68.90in	10mm	0.39in	117.60	4951	3857-5149
m2010	i0079	2010mm	79.13in	2000mm	78.74in	10mm	0.39in	134.40	5658	4408-5885

¹ Actual total overall length of light fixture (LED strip + end caps + void/wire hole)

² Actual length of PCB strip

³ Actual length of 2x end caps





SEN Louvre CV 035 Options

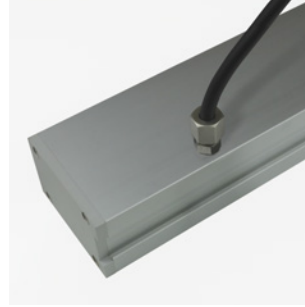
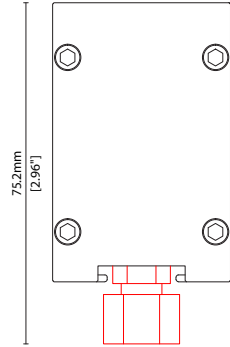


CABLE EXIT OPTIONS

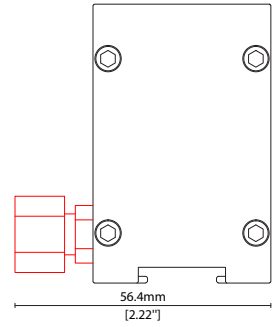
* Options are an integral part of the fixture ordering codes. Please refer to **Code Table** pages.



RC Rear cable exit



SC Side cable exit



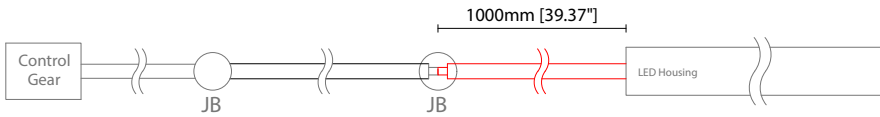
High Power

SEN Louvre CV 035 Options

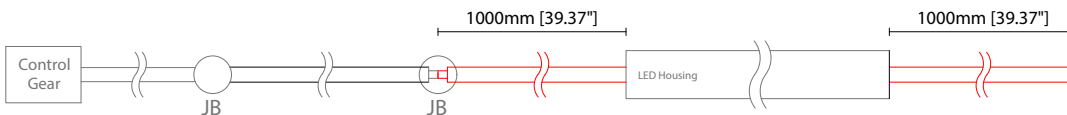
KKDÖ

POWER FEED OPTIONS

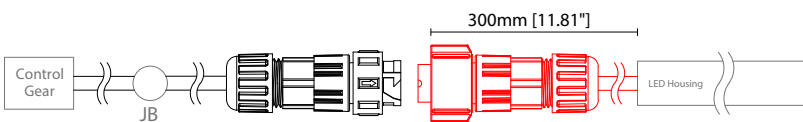
1000 S00B 1000mm (39.37") Single $\varnothing 6.3$ mm sheath tail



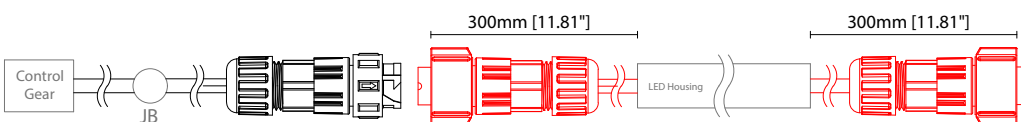
1000 D00B 1000mm (39.37") Double $\varnothing 6.3$ mm sheath tail



0300 S67B 300mm (11.81") Single $\varnothing 6.3$ mm sheath IP67 connector

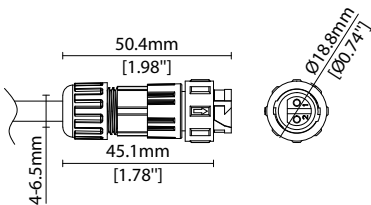


0300 D67B 300mm (11.81") Double $\varnothing 6.3$ mm sheath IP67 connector

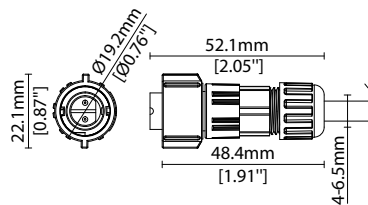


IP67 2 Pin Connector

Female connector
2 PIN (IP67)



Male connector
2 PIN (IP67)



Key

Control Gear Power supply, sub-controllers & control systems

JB Junction box / cable connection

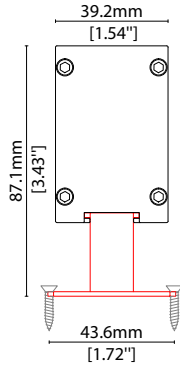
MOUNTING ACCESSORIES

Note: Accessories are to be ordered separately with corresponding code shown below.



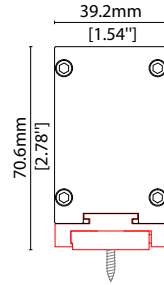
KKBK-02

Fixed bracket (allow 2 per metre/40in)
Steel finish
Pre-assembled for double tail



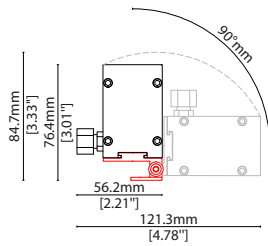
KKBK-09

Mounting plate
(allow 2 per metre/40in – factory fitted)
Silver anodised aluminium finish
Pre-assembled for double tail



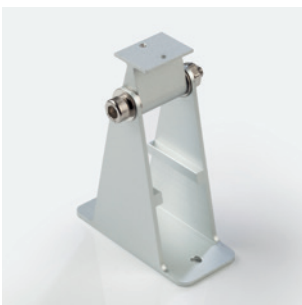
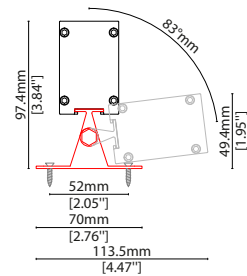
KKBK-23

Low adjustable bracket
(allow 2 per metre/40in)
Silver anodised aluminium finish
Pre-assembled for double tail



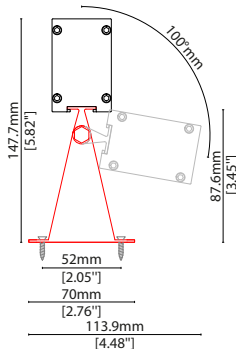
KKBK-16

Small adjustable bracket
(allow 2 per metre/40in)
Silver anodised aluminium finish
Pre-assembled for double tail



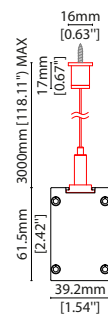
KKBK-17

Large adjustable bracket
(allow 2 per metre/40in)
Silver anodised aluminium finish
Pre-assembled for double tail



KKSU-05

Quick release suspension wire kit





SEN Louvre CV 035 Accessories



EXTERIOR JUNCTION BOXES



KKJB-07

IP67 Slim J-Box
(including type A,B,C,D bushings)



KKJB-07R

Potting resin for IP67 Slim J-Box



SEN Louvre CV 035

Driver/PSU Options



AVAILABLE PSU OPTIONS

Control Mode	PSU (Order Code)	Input Voltage AC	Output Voltage DC	Rated Output Current	Rated Power	Dim %	IP Rating
Switched	CEN-60-24	90-295V	24V	2.5A	60W	-	IP67
	HLG-60H-24	90-305V	24V	2.5A	60W	-	IP67
	HLG-100H-24	90-305V	24V	4.0A	100W	-	IP67
	HLG-150H-24	90-305V	24V	6.3A	150W	-	IP67
	HLG-240H-24	90-305V	24V	10A	240W	-	IP67
0-10V (1-10V)	PWM-40-24	90-305V	24V	1.67A	40W	100-0.15 (100-10)	IP67
	PWM-60-24	90-305V	24V	2.5A	60W	100-0.15 (100-10)	IP67
	PWM-90-24	90-305V	24V	3.67A	90W	100-0.15 (100-10)	IP67
	PWM-120-24	90-305V	24V	5.0A	120W	100-0.15 (100-10)	IP67
DALI	LIN100A1	120-277V	24V	1A per channel	100W	100-0.1	IP66/IP40
DMX RGB	LIN100A1	120-277V	24V	1.33A per channel	100W	100-0.1	IP66/IP40
DMX RGBW	LIN100A1	120-277A	24V	1A per channel	100W	100-0.1	IP66/IP40

Flicker Free Options - Combination of PSU+ sub-controller

Control Mode	PSU (Order Code)	Sub-controller (Order Code)	Input Voltage AC	Output Voltage DC	Rated Output Current	Rated Power	Dim %	IP Rating PSU/ Sub-controller
0-10V or 1-10V	CEN-60-24	KKDM-06	90-295V	24V	2.5A	60W	100-0.9	IP67/IP20
	HLG-60H-24	KKDM-06	90-295V	24V	2.5A	60W	100-0.9	IP67/IP20
	HLG-100H-24	KKDM-06	90-295V	24V	4.0A	100W	100-0.9	IP67/IP20
	HLG-150H-24	KKDM-06	90-295V	24V	6.3A	150W	100-0.9	IP67/IP20
	HLG-240H-24	KKDM-06	90-295V	24V	10.0A	240W	100-0.9	IP67/IP20
DALI	CEN-60-24	KKDL-02/03	90-295V	24V	2.5A	60W	100-0.1	IP67/IP20
	HLG-60H-24	KKDL-02/03	90-305V	24V	2.5A	60W	100-0.1	IP67/IP20
	HLG-100H-24	KKDL-02/03	90-305V	24V	4.0A	100W	100-0.1	IP67/IP20
	HLG-150H-24	KKDL-02/03	90-305V	24V	6.3A	150W	100-0.1	IP67/IP20
	HLG-240H-24	KKDL-02/03	90-305V	24V	10.0A	240W	100-0.1	IP67/IP20
DMX RGB	CEN-60-24	KKSC-05	90-295V	24V	2.5A	60W	100-0.9	IP67/IP20
	HLG-60H-24	KKSC-05	90-305V	24V	2.5A	60W	100-0.9	IP67/IP20
	HLG-100H-24	KKSC-05	90-305V	24V	4A	100W	100-0.9	IP67/IP20
	HLG-150H-24	KKSC-05	90-305V	24V	6.3A	150W	100-0.9	IP67/IP20
	HLG-240H-24	KKSC-05	90-305V	24V	10.0A	240W	100-0.9	IP67/IP20

¹ The items shown above cover the most frequently used specification but does not exhaust the possible options

² PSU and/or driver can be chosen from the table, or KKDC may recommend the best option upon receipt of the controls requirement and installation environment

³ Electrical shop drawing will include detailed information of PSU and relevant control drivers

⁴ Cut sheets are available on the controls section of www.kkdc.lighting or upon request